

# Statistical Publication

## Receptions into NSW Correctional Centres 2013

### Summary of Characteristics

**Simon Corben**  
Data & Systems Manager

Statistical Publication No. 43  
December 2014  
ISSN 0814 1215

**Corrective Services NSW**



# **Receptions into NSW Correctional Centres 2013**

**Summary of characteristics**

**Simon Corben  
Data and Systems Manager  
Corrections Research, Evaluation  
and Statistics**

December 2014

Statistical Publication No. 43

ISSN 0814 1215

© Corrective Services NSW

Corrections Research, Evaluation and Statistics  
Corrective Services NSW  
Level 3, 20 Lee Street,  
SYDNEY NSW 2000

Telephone: (02) 8346 - 1556

Facsimile: (02) 8346 - 1590

Web: <http://www.justice.nsw.gov.au>

[simon.corben@dcs.nsw.gov.au](mailto:simon.corben@dcs.nsw.gov.au)

[research.enquiries@dcs.nsw.gov.au](mailto:research.enquiries@dcs.nsw.gov.au)

## Table of Contents

**1**

### **Total receptions 2013**

Table 1.1 Demographic characteristics of offenders received into custody .....	3
Age on reception .....	3
Indigenous status .....	3
Marital status .....	3
Children of offenders .....	3
Country of birth .....	3
Cultural background .....	4
Language spoken at home .....	4
Statistical Area of last known address .....	5
Accommodation status .....	6
Education and training .....	6
Medical issues .....	6
Mental health .....	6
Referrals .....	6
Priority 1 referrals .....	6
Priority 2 referrals .....	7
Month of reception .....	7
Figure 1.1: Weekly trends in receptions into NSW correctional centres - Males .....	8
Figure 1.2: Weekly trends in receptions into NSW correctional centres - Females .....	8
Table 1.2 Criminogenic and operational characteristics.....	9
Legal status on reception .....	9
Prior imprisonment .....	9
Period since last imprisonment .....	9
Most serious offence on reception .....	10
Diversity of offences .....	10
Correctional Centre of reception .....	11
Level of court of initial order .....	11
Statistical Area of initial court .....	12
Parole status on reception .....	13
Initial classification on reception .....	13
On medication at initial classification .....	13
On management program at initial classification .....	14
Figure 1.3: Age profile of receptions into NSW correctional centres.....	15
Figure 1.4: Last known address profile of receptions into NSW correctional centres.....	15
Table 1.3: Demographic characteristics of Indigenous offenders.....	16
Age on reception .....	16
Indigenous status .....	16
Marital status .....	16
Children of offenders .....	16
Country of birth .....	17
Cultural background .....	17
Language spoken at home .....	17
Statistical Area of last known address .....	18
Accommodation status .....	19
Education and training .....	19

Mental health .....	19
Referrals .....	19
Priority 1 referrals .....	19
Priority 2 referrals .....	20
Month of reception .....	20

<b>Table 1.4: Criminogenic and operational characteristics of Indigenous offenders.....</b>	<b>21</b>
Legal status on reception .....	21
Prior imprisonment .....	21
Period since last imprisonment .....	21
Most serious offence on reception .....	22
Diversity of offences .....	22
Correctional Centre of reception .....	23
Level of court of initial order .....	23
Statistical Area of initial court .....	24
Parole status on reception .....	25
Initial classification on reception .....	25
On medication at initial classification .....	25
On management program at initial classification .....	26

## 2

### **Historical trends**

<b>Table 2.1 Trends in offenders received into NSW Correctional Centres - 1997 to 2013 by gender and Indigenous status.....</b>	<b>29</b>
<b>Figure 2.1: Trends in total receptions into NSW Correctional Centres - 1997 to 2013.....</b>	<b>29</b>
<b>Figure 2.2: Trends in receptions into NSW Correctional Centres - Males.....</b>	<b>30</b>
<b>Figure 2.3: Trends in receptions into NSW Correctional Centres - Females.....</b>	<b>30</b>
<b>Figure 2.4: Trends in receptions into NSW Correctional Centres - Indigenous offenders.....</b>	<b>30</b>
<b>Explanatory notes.....</b>	<b>31</b>

# Section 1:

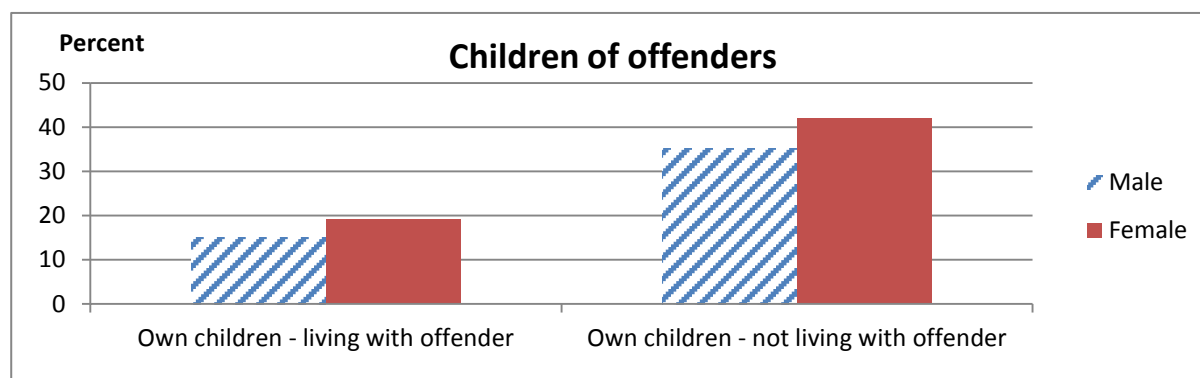
## Total receptions





**Table 1.1: Demographic characteristics of offenders received into custody**

Characteristics	Male		Female		Total	
	No.	%	No.	%	No.	%
<b>Age on reception</b>						
Under 18	54	0.4	-	-	54	0.3
18	376	2.8	44	2.2	420	2.7
19	512	3.8	52	2.6	564	3.6
20	486	3.6	57	2.9	543	3.5
21-22	981	7.2	141	7.1	1122	7.2
23-24	949	7.0	139	7.0	1088	7.0
25-29	2430	17.8	399	20.2	2829	18.1
30-34	2531	18.6	385	19.5	2916	18.7
35-39	1968	14.4	299	15.1	2267	14.5
40-44	1596	11.7	242	12.2	1838	11.8
45-49	866	6.3	102	5.2	968	6.2
50-54	434	3.2	64	3.2	498	3.2
55-59	245	1.8	37	1.9	282	1.8
60-64	118	0.9	14	0.7	132	0.8
65 +	97	0.7	3	0.2	100	0.6
<b>Indigenous status</b>						
Aboriginal/Torres Strait Islander	3815	28.0	755	38.2	4570	29.3
Non-Aboriginal	9309	68.2	1103	55.8	10412	66.7
Status unknown/not recorded	519	3.8	120	6.1	639	4.1
<b>Marital status</b>						
Never married	8131	59.6	1073	54.2	9204	58.9
Married/de-facto	3497	25.6	526	26.6	4023	25.8
Separated	361	2.6	60	3.0	421	2.7
Divorced	335	2.5	57	2.9	392	2.5
Widowed	21	0.2	7	0.4	28	0.2
Unknown	1298	9.5	255	12.9	1553	9.9
<b>Children of offenders</b>						
Own children (total)	6425	47.1	1151	58.2	7576	48.5
Own children - living with offender	2054	15.1	377	19.1	2431	15.6
Own children - not living with offender	4784	35.1	829	41.9	5613	35.9
Offenders living with own child aged under 5 years	1397	10.2	180	9.1	1577	10.1



**Table 1.1: Demographic characteristics of offenders received into custody**

Characteristics	Male		Female		Total	
	No.	%	No.	%	No.	%
<b>Country of birth</b>						
Australia	10526	77.2	1486	75.1	12012	76.9
Oceania and Antarctica excluding Australia	521	3.8	88	4.4	609	3.9
North-West Europe	192	1.4	19	1.0	211	1.4
Southern and Eastern Europe	157	1.2	15	0.8	172	1.1
North Africa and The Middle East	407	3.0	10	0.5	417	2.7
South-East Asia	343	2.5	63	3.2	406	2.6
North-East Asia	131	1.0	18	0.9	149	1.0
Southern and Central Asia	125	0.9	2	0.1	127	0.8
Americas	111	0.8	23	1.2	134	0.9
Sub-Saharan Africa	83	0.6	2	0.1	85	0.5
Unknown/Not recorded	1047	7.7	252	12.7	1299	8.3
<b>Cultural background</b>						
Australian Peoples	7013	51.4	917	46.4	7930	50.8
Oceanian excluding Australian peoples	2927	21.5	567	28.7	3494	22.4
North-West European	257	1.9	42	2.1	299	1.9
Southern and Eastern European	538	3.9	62	3.1	600	3.8
North African and Middle Eastern	878	6.4	24	1.2	902	5.8
South-East Asian	402	2.9	71	3.6	473	3.0
North-East Asian	147	1.1	15	0.8	162	1.0
Southern and Central Asian	163	1.2	10	0.5	173	1.1
People of the Americas	92	0.7	14	0.7	106	0.7
Sub Saharan African	98	0.7	3	0.2	101	0.6
Unknown/Not recorded	471	3.5	92	4.7	563	3.6
<b>Language spoken at home</b>						
English	12054	88.4	1788	90.4	13842	88.6
Northern European excluding English	18	0.1	3	0.2	21	0.1
Southern European	132	1.0	23	1.2	155	1.0
Eastern European	93	0.7	9	0.5	102	0.7
Southwest And Central Asian	449	3.3	8	0.4	457	2.9
Southern Asian	74	0.5	1	0.1	75	0.5
Southeast Asian	267	2.0	50	2.5	317	2.0
Eastern Asian	157	1.2	14	0.7	171	1.1
Other Languages	129	0.9	3	0.2	132	0.8
Unknown/Not recorded	270	2.0	79	4.0	349	2.2

**Table 1.1: Demographic characteristics of offenders received into custody**

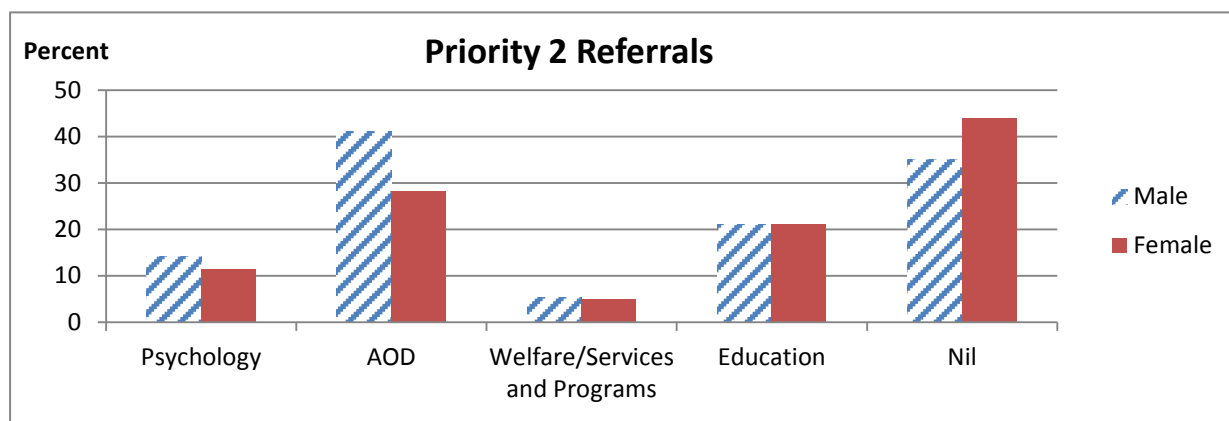
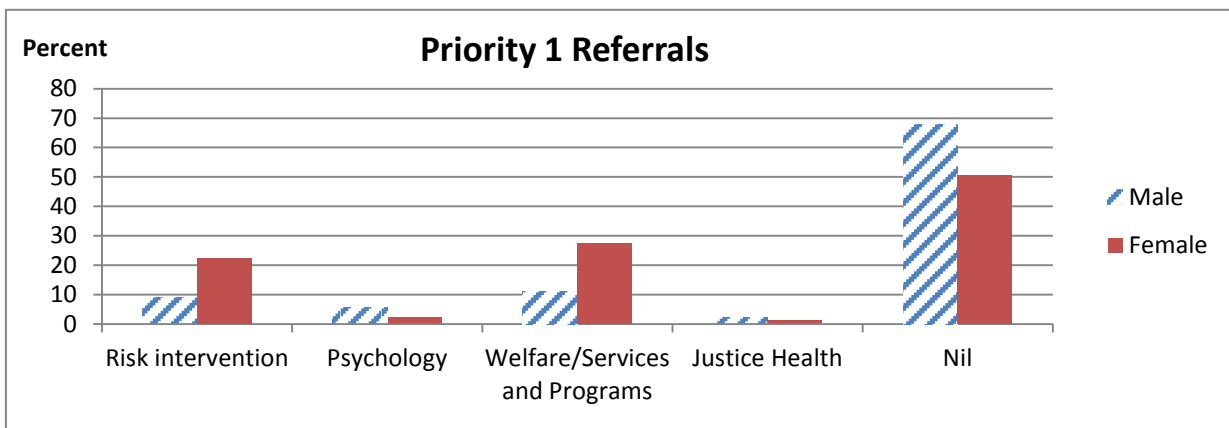
Characteristics	Male		Female		Total	
	No.	%	No.	%	No.	%
<b>Statistical Area of last known address</b>						
Capital Region	434	3.2	54	2.7	488	3.1
Central Coast	504	3.7	74	3.7	578	3.7
Central West	500	3.7	61	3.1	561	3.6
Coffs Harbour - Grafton	267	2.0	30	1.5	297	1.9
Far West and Orana	689	5.1	111	5.6	800	5.1
Hunter Valley exc Newcastle	513	3.8	75	3.8	588	3.8
Illawarra	565	4.1	68	3.4	633	4.1
Mid North Coast	607	4.4	70	3.5	677	4.3
Murray	213	1.6	28	1.4	241	1.5
New England and North West	642	4.7	66	3.3	708	4.5
Newcastle and Lake Macquarie	710	5.2	114	5.8	824	5.3
Richmond - Tweed	439	3.2	54	2.7	493	3.2
Riverina	325	2.4	33	1.7	358	2.3
Southern Highlands and Shoalhaven	339	2.5	34	1.7	373	2.4
Sydney - Baulkham Hills and Hawkesbury	87	0.6	13	0.7	100	0.6
Sydney - Blacktown	756	5.5	112	5.7	868	5.6
Sydney - City and Inner South	794	5.8	197	10.0	991	6.3
Sydney - Eastern Suburbs	245	1.8	52	2.6	297	1.9
Sydney - Inner South West	796	5.8	115	5.8	911	5.8
Sydney - Inner West	243	1.8	33	1.7	276	1.8
Sydney - North Sydney and Hornsby	111	0.8	22	1.1	133	0.9
Sydney - Northern Beaches	105	0.8	19	1.0	124	0.8
Sydney - Outer South West	555	4.1	78	3.9	633	4.1
Sydney - Outer West and Blue Mountains	491	3.6	72	3.6	563	3.6
Sydney - Parramatta	814	6.0	134	6.8	948	6.1
Sydney - Ryde	65	0.5	9	0.5	74	0.5
Sydney - South West	861	6.3	131	6.6	992	6.4
Sydney - Sutherland	142	1.0	25	1.3	167	1.1
Migratory - Offshore - Shipping (NSW)	-	-	-	-	-	-
Special Purpose Codes SA4 (NSW)	-	-	-	-	-	-
Victoria	35	0.3	4	0.2	39	0.2
Queensland	62	0.5	4	0.2	66	0.4
South Australia	3	0.0	1	0.1	4	0.0
Western Australia	-	-	-	-	-	-
Tasmania	1	0.0	-	-	1	0.0
Northern Territory	-	-	-	-	-	-
Australian Capital Territory	5	0.0	-	-	5	0.0
No fixed abode	-	-	-	-	-	-
Overseas	71	0.5	3	0.2	74	0.5
Unknown	654	4.8	82	4.1	736	4.7

**Table 1.1: Demographic characteristics of offenders received into custody**

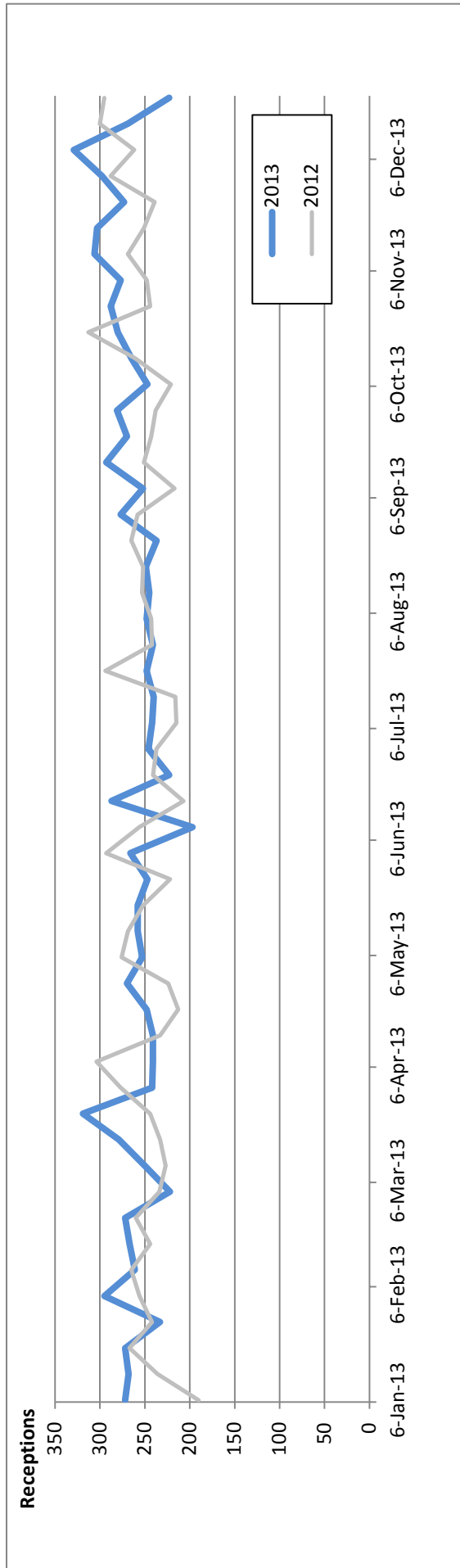
Characteristics	Male		Female		Total	
	No.	%	No.	%	No.	%
<b>Accommodation</b>						
Own Home	521	3.8	78	3.9	599	3.8
Rented	2446	17.9	351	17.7	2797	17.9
Shared accommodation	1155	8.5	213	10.8	1368	8.8
Living with family	5881	43.1	556	28.1	6437	41.2
Housing NSW	819	6.0	379	19.2	1198	7.7
Unstable	337	2.5	93	4.7	430	2.8
Homeless	860	6.3	138	7.0	998	6.4
Other	444	3.3	37	1.9	481	3.1
Unknown/Not recorded	1180	8.6	133	6.7	1313	8.4
<b>Education and training</b>						
Completed Year 10 and Trade	3370	24.7	541	27.4	3911	25.0
Completed Year 10 only	4114	30.2	492	24.9	4606	29.5
Trade only	1858	13.6	281	14.2	2139	13.7
Neither Year 10 nor Trade	4301	31.5	664	33.6	4965	31.8
<b>Medical issues</b>						
Withdrawing from alcohol and drugs	261	1.9	104	5.3	365	2.3
Withdrawing from drugs	2022	14.8	625	31.6	2647	16.9
Withdrawing from alcohol	597	4.4	121	6.1	718	4.6
Not withdrawing	10763	78.9	1128	57.0	11891	76.1
<b>Mental health</b>						
Treated for mental health issue/sought counselling	4444	32.6	1037	52.4	5481	35.1
Treated for mental health issue only	1047	7.7	269	13.6	1316	8.4
Sought counselling only	2633	19.3	272	13.8	2905	18.6
Neither mental health treatment nor counselling	5519	40.5	400	20.2	5919	37.9
<b>Referrals</b>						
Pre-source screening	1382	10.1	70	3.5	1452	9.3
Immediate concerns	5551	40.7	270	13.7	5821	37.3
Stress factors	3323	24.4	189	9.6	3512	22.5
Education factors	2869	21.0	383	19.4	3252	20.8
Alcohol, other drugs and gambling	5188	38.0	548	27.7	5736	36.7
Self harm risk factors	1390	10.2	304	15.4	1694	10.8
<b>Priority 1 referrals</b>						
Risk intervention	1240	9.1	440	22.2	1680	10.8
Psychology	784	5.7	42	2.1	826	5.3
Welfare/Services and Programs	1521	11.1	545	27.6	2066	13.2
Justice Health	292	2.1	20	1.0	312	2.0
Nil	9265	67.9	998	50.5	10263	65.7

**Table 1.1: Demographic characteristics of offenders received into custody**

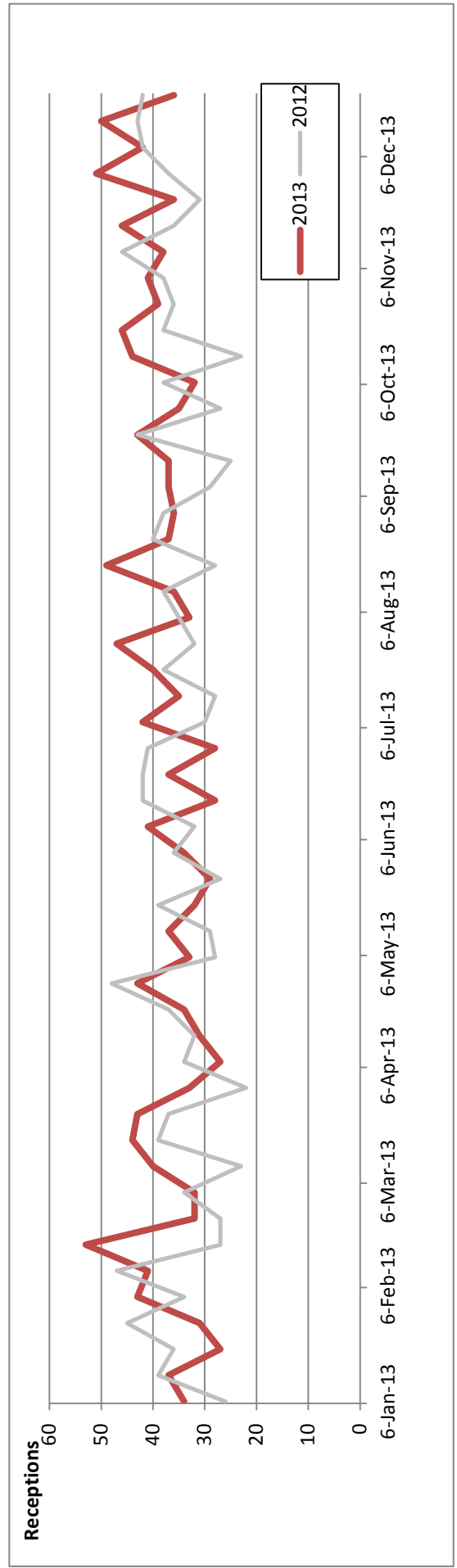
Characteristics	Male		Female		Total	
	No.	%	No.	%	No.	%
<b>Priority 2 referrals</b>						
Psychology	1937	14.2	227	11.5	2164	13.9
AOD	5622	41.2	557	28.2	6179	39.6
Welfare/Services and Programs	720	5.3	100	5.1	820	5.2
Education	2881	21.1	418	21.1	3299	21.1
Nil	4777	35.0	869	43.9	5646	36.1
<b>Month of reception</b>						
Jan-13	1134	8.3	145	7.3	1279	8.2
Feb-13	1071	7.9	175	8.8	1246	8.0
Mar-13	1200	8.8	171	8.6	1371	8.8
Apr-13	1061	7.8	142	7.2	1203	7.7
May-13	1147	8.4	152	7.7	1299	8.3
Jun-13	1012	7.4	143	7.2	1155	7.4
Jul-13	1101	8.1	168	8.5	1269	8.1
Aug-13	1077	7.9	177	8.9	1254	8.0
Sep-13	1137	8.3	164	8.3	1301	8.3
Oct-13	1236	9.1	167	8.4	1403	9.0
Nov-13	1239	9.1	179	9.0	1418	9.1
Dec-13	1228	9.0	195	9.9	1423	9.1



**Figure 1.1: Weekly trends in receptions into NSW correctional centres - Males**

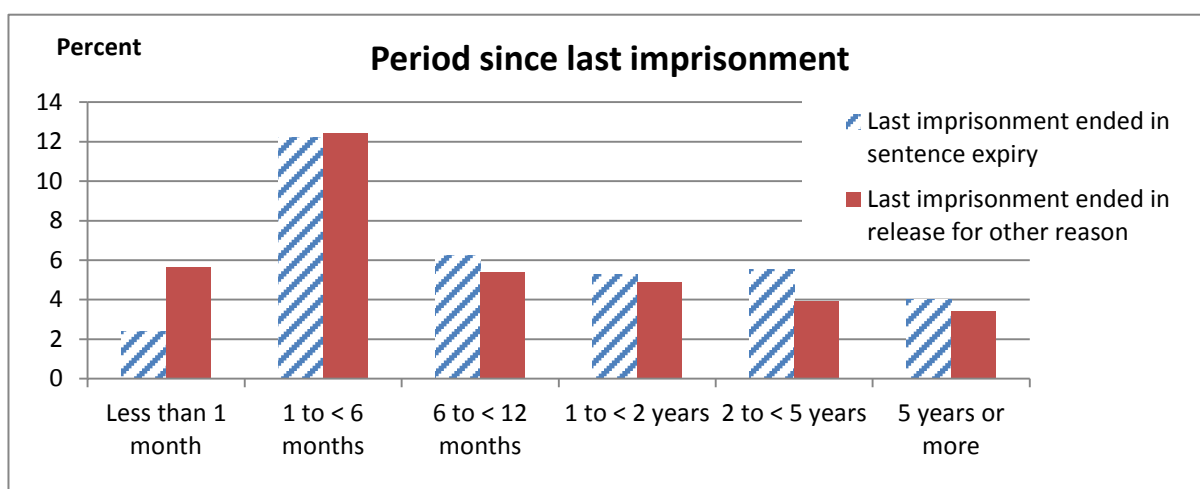


**Figure 1.2: Weekly trends in receptions into NSW correctional centres - Females**



**Table 1.2: Criminogenic and operational characteristics of offenders received into custody**

Characteristics	Male		Female		Total	
	No.	%	No.	%	No.	%
<b>Legal status on reception</b>						
- Unsented	9887	72.5	1538	77.8	11425	73.1
- Sentenced	3756	27.5	440	22.2	4196	26.9
<b>Prior imprisonment in NSW correctional centre</b>						
- Prior Sentence	7821	57.3	937	47.4	8758	56.1
- Prior remand	1987	14.6	408	20.6	2395	15.3
- Prior community contact	1597	11.7	240	12.1	1837	11.8
- No prior CSNSW contact	2238	16.4	393	19.9	2631	16.8
- First time in custody (ISQ)	3510	25.7	599	30.3	4109	26.3
<b>Period since last imprisonment</b>						
<b>Last imprisonment ended in sentence expiry</b>						
Less than 1 month	336	2.5	33	1.7	369	2.4
1 to < 6 months	1748	12.8	159	8.0	1907	12.2
6 to < 12 months	884	6.5	89	4.5	973	6.2
1 to < 2 years	749	5.5	78	3.9	827	5.3
2 to < 5 years	796	5.8	69	3.5	865	5.5
5 years or more	571	4.2	55	2.8	626	4.0
<b>Last imprisonment ended in release for other reason</b>						
Less than 1 month	722	5.3	157	7.9	879	5.6
1 to < 6 months	1595	11.7	346	17.5	1941	12.4
6 to < 12 months	711	5.2	129	6.5	840	5.4
1 to < 2 years	685	5.0	83	4.2	768	4.9
2 to < 5 years	538	3.9	72	3.6	610	3.9
5 years or more	462	3.4	73	3.7	535	3.4
No prior imprisonment	3846	28.2	635	32.1	4481	28.7

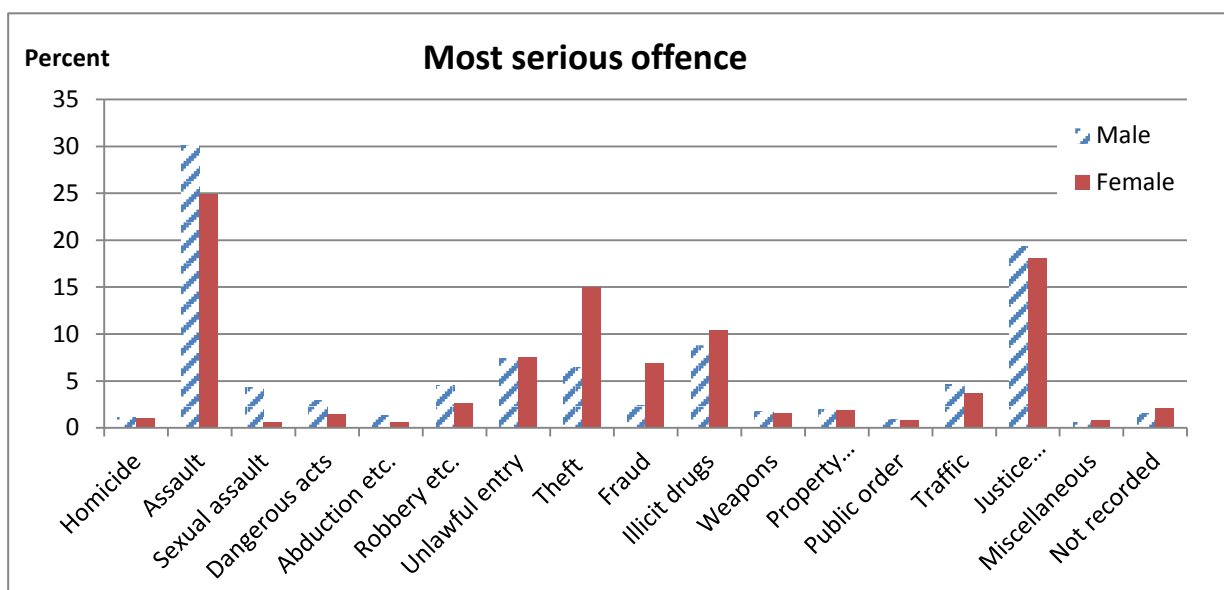


**Table 1.2: Criminogenic and operational characteristics of offenders received into custody**

Characteristics	Male		Female		Total	
	No.	%	No.	%	No.	%
<b>Most serious offence on reception</b>						
Homicide and related	148	1.1	21	1.1	169	1.1
Acts intended to cause injury (assault)	4112	30.1	493	24.9	4605	29.5
Sexual assault and related	586	4.3	12	0.6	598	3.8
Dangerous or negligent acts endang. persons	390	2.9	29	1.5	419	2.7
Abduction, harassment etc.	182	1.3	12	0.6	194	1.2
Robbery, extortion etc.	610	4.5	53	2.7	663	4.2
Unlawful entry with intent/burglary, B&E	1014	7.4	148	7.5	1162	7.4
Theft and related	876	6.4	296	15.0	1172	7.5
Fraud, deception and related	320	2.3	137	6.9	457	2.9
Illicit drug offences	1195	8.8	206	10.4	1401	9.0
Weapons and explosives	240	1.8	30	1.5	270	1.7
Property damage and environmental pollution	267	2.0	38	1.9	305	2.0
Public order offences	125	0.9	16	0.8	141	0.9
Traffic and vehicle regulatory offences	633	4.6	74	3.7	707	4.5
Offences against justice procedures etc.	2644	19.4	357	18.0	3001	19.2
Miscellaneous offences	85	0.6	15	0.8	100	0.6
Not recorded	216	1.6	41	2.1	257	1.6

**Diversity of offences**

1	4462	32.7	621	31.4	5083	32.5
2	2359	17.3	325	16.4	2684	17.2
3 to 5	3956	29.0	522	26.4	4478	28.7
6 to 10	1909	14.0	294	14.9	2203	14.1
11 to 20	590	4.3	140	7.1	730	4.7
21 or more	151	1.1	35	1.8	186	1.2
Not recorded	216	1.6	41	2.1	257	1.6





**Table 1.2: Criminogenic and operational characteristics of offenders received into custody**

Characteristics	Male		Female		Total	
	No.	%	No.	%	No.	%
<b>Correctional Centre of reception</b>						
Bathurst	356	2.6	50	2.5	406	2.6
Broken Hill	197	1.4	35	1.8	232	1.5
Cessnock	1119	8.2	5	0.3	1124	7.2
Goulburn	288	2.1	-	-	288	1.8
Grafton	828	6.1	98	5.0	926	5.9
John Morony	158	1.2	-	-	158	1.0
Junee	599	4.4	60	3.0	659	4.2
Kariong Juvenile	64	0.5	-	-	64	0.4
Long Bay Hospital	15	0.1	1	0.1	16	0.1
Metropolitan Remand And Reception Centre	6658	48.8	-	-	6658	42.6
Mid North Coast	622	4.6	68	3.4	690	4.4
Parklea	827	6.1	-	-	827	5.3
Silverwater Womens	-	-	1507	76.2	1507	9.6
South Coast	576	4.2	72	3.6	648	4.1
Tamworth	638	4.7	-	-	638	4.1
Wellington	698	5.1	82	4.1	780	5.0
<b>Level of Court of initial order</b>						
Supreme	36	0.3	5	0.3	41	0.3
District	754	5.5	95	4.8	849	5.4
Local	10626	77.9	1551	78.4	12177	78.0
Childrens	97	0.7	7	0.4	104	0.7
Parole Board	1625	11.9	172	8.7	1797	11.5
Drug Court	498	3.7	145	7.3	643	4.1
Other Jurisdiction	7	0.1	3	0.2	10	0.1

**Table 1.2: Criminogenic and operational characteristics of offenders received into custody**

Characteristics	Male		Female		Total	
	No.	%	No.	%	No.	%
<b>Statistical Area of initial court</b>						
Capital Region	454	3.3	58	2.9	512	3.3
Central Coast	425	3.1	62	3.1	487	3.1
Central West	389	2.9	53	2.7	442	2.8
Coffs Harbour - Grafton	238	1.7	21	1.1	259	1.7
Far West and Orana	586	4.3	82	4.1	668	4.3
Hunter Valley exc Newcastle	368	2.7	36	1.8	404	2.6
Illawarra	465	3.4	52	2.6	517	3.3
Mid North Coast	557	4.1	66	3.3	623	4.0
Murray	224	1.6	23	1.2	247	1.6
New England and North West	573	4.2	65	3.3	638	4.1
Newcastle and Lake Macquarie	696	5.1	118	6.0	814	5.2
Richmond - Tweed	464	3.4	64	3.2	528	3.4
Riverina	310	2.3	32	1.6	342	2.2
Southern Highlands and Shoalhaven	216	1.6	27	1.4	243	1.6
Sydney - Baulkham Hills and Hawkesbury	-	-	-	-	-	-
Sydney - Blacktown	385	2.8	59	3.0	444	2.8
Sydney - City and Inner South	2843	20.8	396	20.0	3239	20.7
Sydney - Eastern Suburbs	169	1.2	39	2.0	208	1.3
Sydney - Inner South West	276	2.0	51	2.6	327	2.1
Sydney - Inner West	276	2.0	32	1.6	308	2.0
Sydney - North Sydney and Hornsby	66	0.5	12	0.6	78	0.5
Sydney - Northern Beaches	1	0.0	-	-	1	0.0
Sydney - Outer South West	396	2.9	50	2.5	446	2.9
Sydney - Outer West and Blue Mountains	261	1.9	30	1.5	291	1.9
Sydney - Parramatta	2345	17.2	424	21.4	2769	17.7
Sydney - Ryde	15	0.1	3	0.2	18	0.1
Sydney - South West	234	1.7	50	2.5	284	1.8
Sydney - Sutherland	189	1.4	30	1.5	219	1.4
Migratory - Offshore - Shipping (NSW)	-	-	-	-	-	-
Special Purpose Codes SA4 (NSW)	-	-	-	-	-	-
Other outside NSW	3	0.0	2	0.1	5	0.0
Unknown	219	1.6	41	2.1	260	1.7

**Table 1.2: Criminogenic and operational characteristics of offenders received into custody**

Characteristics	Male		Female		Total	
	No.	%	No.	%	No.	%
<b>Parole status on reception</b>						
Parole revoked prior to reception	1287	9.4	145	7.3	1432	9.2
Parole revoked after reception	825	6.0	57	2.9	882	5.6
Other community-based order	2876	21.1	531	26.8	3407	21.8
No community-based order	8655	63.4	1245	62.9	9900	63.4
<b>Initial classification on reception</b>						
A2	60	0.4	-	-	60	0.4
A2U	1249	9.2	-	-	1249	8.0
B	391	2.9	-	-	391	2.5
BU	3324	24.4	-	-	3324	21.3
C1	847	6.2	-	-	847	5.4
C1U	2150	15.8	1	0.1	2151	13.8
C2	2410	17.7	-	-	2410	15.4
CAT2	-	-	435	22.0	435	2.8
CAT3	-	-	23	1.2	23	0.1
CAT4	-	-	1	0.1	1	0.0
E1	13	0.1	1	0.1	14	0.1
E1U	31	0.2	1	0.1	32	0.2
E2	250	1.8	17	0.9	267	1.7
E2U	345	2.5	31	1.6	376	2.4
UCAT2	1	0.0	643	32.5	644	4.1
UCAT3	-	-	152	7.7	152	1.0
UCAT4	-	-	73	3.7	73	0.5
Unclassified - very short stay	554	4.1	151	7.6	705	4.5
Unclassified - short stay	1151	8.4	254	12.8	1405	9.0
Unclassified - Drug Court only	137	1.0	-	-	137	0.9
Unclassified - other	730	5.4	195	9.9	925	5.9
<b>On medication at initial classification</b>						
Currently on Methadone	757	5.5	237	12.0	994	6.4
Currently on Buprenorphine	23	0.2	-	-	23	0.1
Currently on Other pharmacotherapies	128	0.9	4	0.2	132	0.8
Multiple medications (derived)	5	0.0	-	-	5	0.0
Not on medication	10169	74.5	1141	57.7	11310	72.4
No assessment	2561	18.8	596	30.1	3157	20.2

**Table 1.2: Criminogenic and operational characteristics of offenders received into custody**

Characteristics	Male		Female		Total	
	No.	%	No.	%	No.	%
<b>On management program at initial classification</b>						
Special Management Area	1160	8.5	21	1.1	1181	7.6
Limited Association	355	2.6	2	0.1	357	2.3
Non-Association	108	0.8	-	-	108	0.7
Segregation	47	0.3	-	-	47	0.3
Short Term Management	2	0.0	-	-	2	0.0
None	9410	69.0	1359	68.7	10769	68.9
No assessment	2561	18.8	596	30.1	3157	20.2

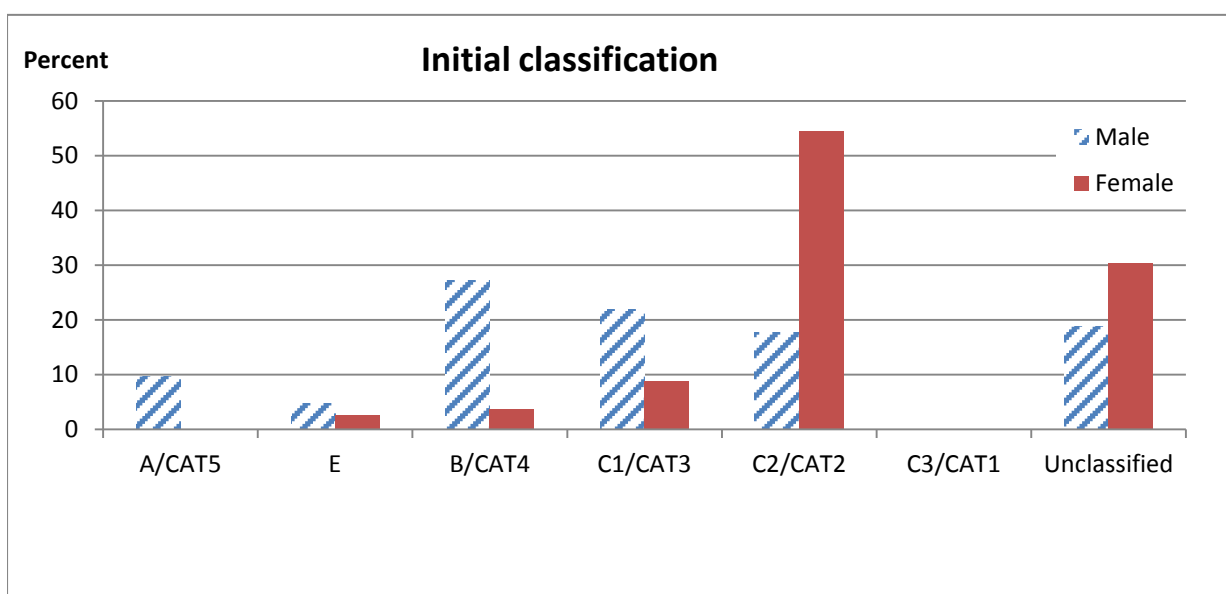


Figure 1.3: Age profile of receptions into NSW correctional centres

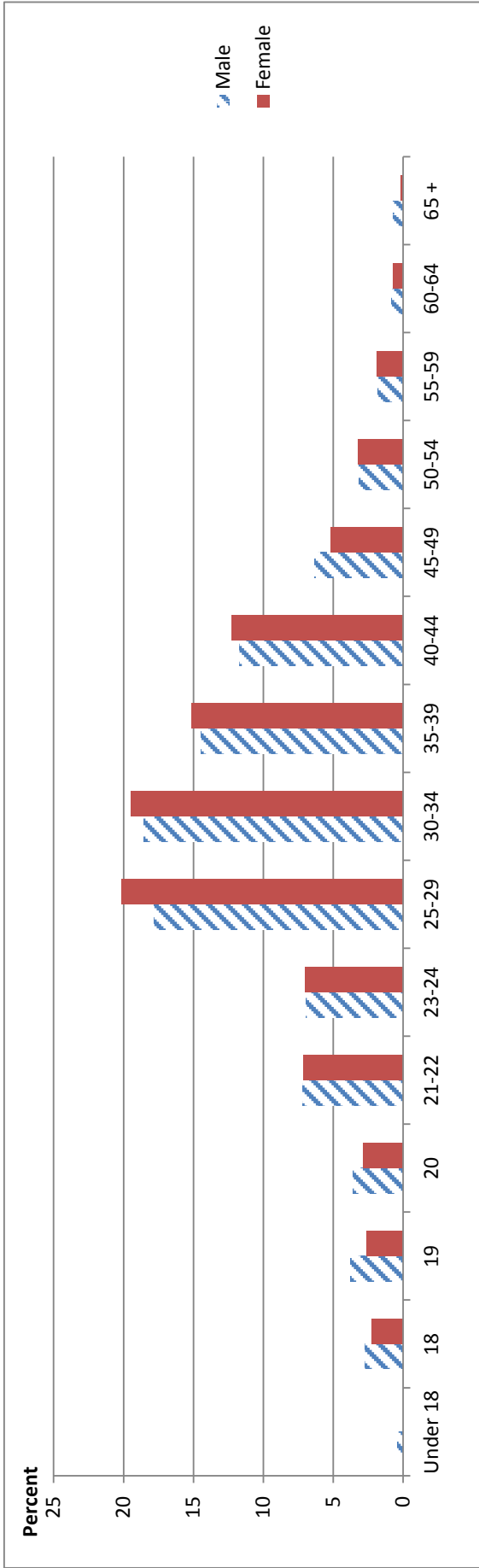
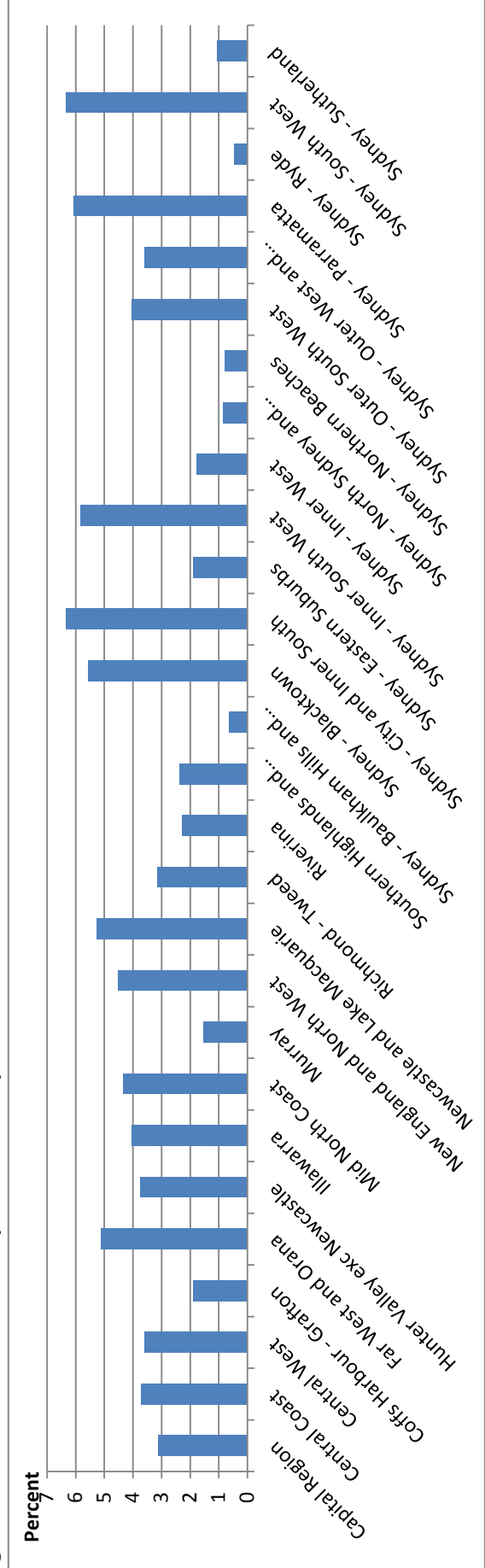
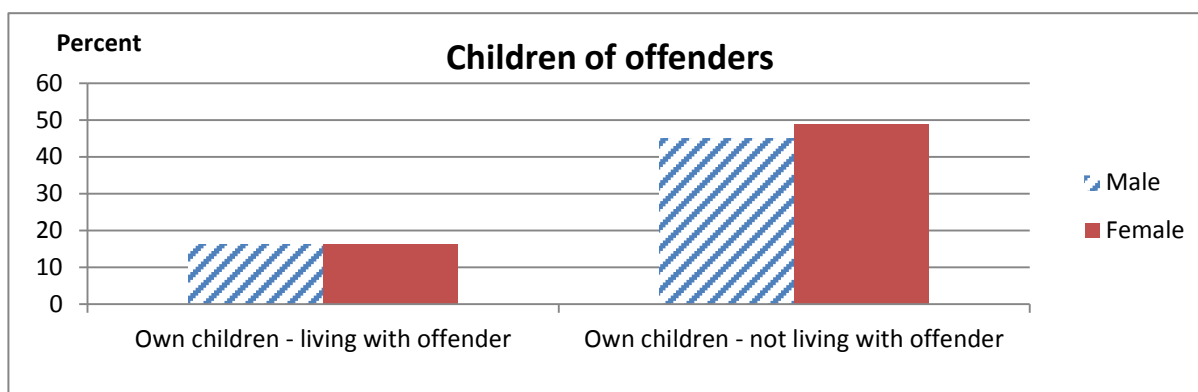


Figure 1.4: Last known address profile of receptions into NSW correctional centres



**Table 1.3: Demographic characteristics - Indigenous offenders received into custody**

Characteristics	Male		Female		Total	
	No.	%	No.	%	No.	%
<b>Age on reception</b>						
Under 18	27	0.7	-	-	27	0.6
18	148	3.9	18	2.4	166	3.6
19	207	5.4	17	2.3	224	4.9
20	180	4.7	22	2.9	202	4.4
21-22	359	9.4	52	6.9	411	9.0
23-24	299	7.8	71	9.4	370	8.1
25-29	733	19.2	187	24.8	920	20.1
30-34	728	19.1	131	17.4	859	18.8
35-39	437	11.5	117	15.5	554	12.1
40-44	391	10.2	85	11.3	476	10.4
45-49	197	5.2	29	3.8	226	4.9
50-54	64	1.7	16	2.1	80	1.8
55-59	33	0.9	10	1.3	43	0.9
60-64	9	0.2	-	-	9	0.2
65 +	3	0.1	-	-	3	0.1
<b>Indigenous status</b>						
Aboriginal/Torres Strait Islander	3815	100.0	755	100.0	4570	100.0
Non-Aboriginal	-	-	-	-	-	-
Status unknown/not recorded	-	-	-	-	-	-
<b>Marital status</b>						
Never married	2394	62.8	425	56.3	2819	61.7
Married/de-facto	1069	28.0	228	30.2	1297	28.4
Separated	70	1.8	20	2.6	90	2.0
Divorced	28	0.7	2	0.3	30	0.7
Widowed	5	0.1	2	0.3	7	0.2
Unknown	249	6.5	78	10.3	327	7.2
<b>Children of offenders</b>						
Own children (total)	2153	56.4	463	61.3	2616	57.2
Own children - living with offender	614	16.1	122	16.2	736	16.1
Own children - not living with offender	1721	45.1	369	48.9	2090	45.7
Offenders living with own child aged under 5 years	459	12.0	63	8.3	522	11.4



**Table 1.3: Demographic characteristics - Indigenous offenders received into custody**

Characteristics	Male		Female		Total	
	No.	%	No.	%	No.	%
<b>Country of birth</b>						
Australia	3496	91.6	669	88.6	4165	91.1
Oceania and Antarctica excluding Australia	18	0.5	9	1.2	27	0.6
North-West Europe	5	0.1	-	-	5	0.1
Southern and Eastern Europe	-	-	-	-	-	-
North Africa and The Middle East	2	0.1	-	-	2	0.0
South-East Asia	2	0.1	-	-	2	0.0
North-East Asia	1	0.0	-	-	1	0.0
Southern and Central Asia	2	0.1	-	-	2	0.0
Americas	-	-	-	-	-	-
Sub-Saharan Africa	1	0.0	-	-	1	0.0
Unknown/Not recorded	288	7.5	77	10.2	365	8.0
<b>Cultural background</b>						
Australian Peoples	1301	34.1	214	28.3	1515	33.2
Oceanian excluding Australian peoples	2299	60.3	462	61.2	2761	60.4
North-West European	19	0.5	4	0.5	23	0.5
Southern and Eastern European	7	0.2	4	0.5	11	0.2
North African and Middle Eastern	4	0.1	-	-	4	0.1
South-East Asian	1	0.0	-	-	1	0.0
North-East Asian	-	-	-	-	-	-
Southern and Central Asian	3	0.1	-	-	3	0.1
People of the Americas	-	-	-	-	-	-
Sub Saharan African	3	0.1	-	-	3	0.1
Unknown/Not recorded	63	1.7	29	3.8	92	2.0
<b>Language spoken at home</b>						
English	3785	99.2	744	98.5	4529	99.1
Northern European excluding English	-	-	-	-	-	-
Southern European	-	-	-	-	-	-
Eastern European	-	-	3	0.4	3	0.1
Southwest And Central Asian	3	0.1	-	-	3	0.1
Southern Asian	1	0.0	-	-	1	0.0
Southeast Asian	1	0.0	-	-	1	0.0
Eastern Asian	1	0.0	-	-	1	0.0
Other Languages	5	0.1	-	-	5	0.1
Unknown/Not recorded	19	0.5	8	1.1	27	0.6

**Table 1.3: Demographic characteristics - Indigenous offenders received into custody**

Characteristics	Male		Female		Total	
	No.	%	No.	%	No.	%
<b>Statistical Area of last known address</b>						
Capital Region	121	3.2	20	2.6	141	3.1
Central Coast	89	2.3	23	3.0	112	2.5
Central West	234	6.1	39	5.2	273	6.0
Coffs Harbour - Grafton	104	2.7	14	1.9	118	2.6
Far West and Orana	548	14.4	103	13.6	651	14.2
Hunter Valley exc Newcastle	144	3.8	27	3.6	171	3.7
Illawarra	127	3.3	13	1.7	140	3.1
Mid North Coast	277	7.3	43	5.7	320	7.0
Murray	67	1.8	10	1.3	77	1.7
New England and North West	407	10.7	56	7.4	463	10.1
Newcastle and Lake Macquarie	178	4.7	32	4.2	210	4.6
Richmond - Tweed	174	4.6	18	2.4	192	4.2
Riverina	112	2.9	11	1.5	123	2.7
Southern Highlands and Shoalhaven	96	2.5	18	2.4	114	2.5
Sydney - Baulkham Hills and Hawkesbury	9	0.2	-	-	9	0.2
Sydney - Blacktown	239	6.3	42	5.6	281	6.1
Sydney - City and Inner South	210	5.5	102	13.5	312	6.8
Sydney - Eastern Suburbs	55	1.4	14	1.9	69	1.5
Sydney - Inner South West	57	1.5	25	3.3	82	1.8
Sydney - Inner West	48	1.3	7	0.9	55	1.2
Sydney - North Sydney and Hornsby	10	0.3	2	0.3	12	0.3
Sydney - Northern Beaches	10	0.3	2	0.3	12	0.3
Sydney - Outer South West	113	3.0	19	2.5	132	2.9
Sydney - Outer West and Blue Mountains	87	2.3	25	3.3	112	2.5
Sydney - Parramatta	98	2.6	40	5.3	138	3.0
Sydney - Ryde	8	0.2	-	-	8	0.2
Sydney - South West	92	2.4	25	3.3	117	2.6
Sydney - Sutherland	6	0.2	6	0.8	12	0.3
Migratory - Offshore - Shipping (NSW)	-	-	-	-	-	-
Special Purpose Codes SA4 (NSW)	-	-	-	-	-	-
Victoria	8	0.2	2	0.3	10	0.2
Queensland	13	0.3	2	0.3	15	0.3
South Australia	1	0.0	1	0.1	2	0.0
Western Australia	-	-	-	-	-	-
Tasmania	-	-	-	-	-	-
Northern Territory	-	-	-	-	-	-
Australian Capital Territory	-	-	-	-	-	-
No fixed abode	-	-	-	-	-	-
Overseas	15	0.4	-	-	15	0.3
Unknown	58	1.5	14	1.9	72	1.6



**Table 1.3: Demographic characteristics - Indigenous offenders received into custody**

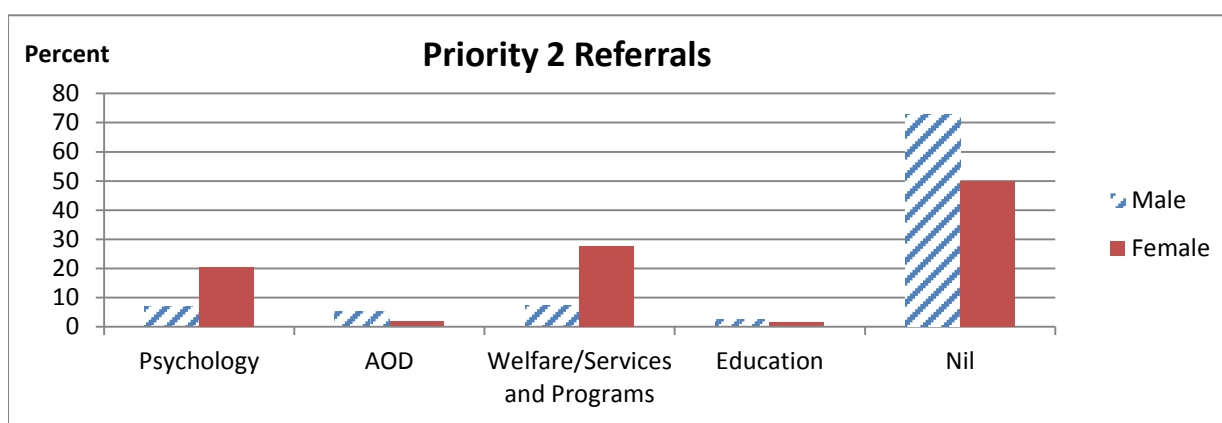
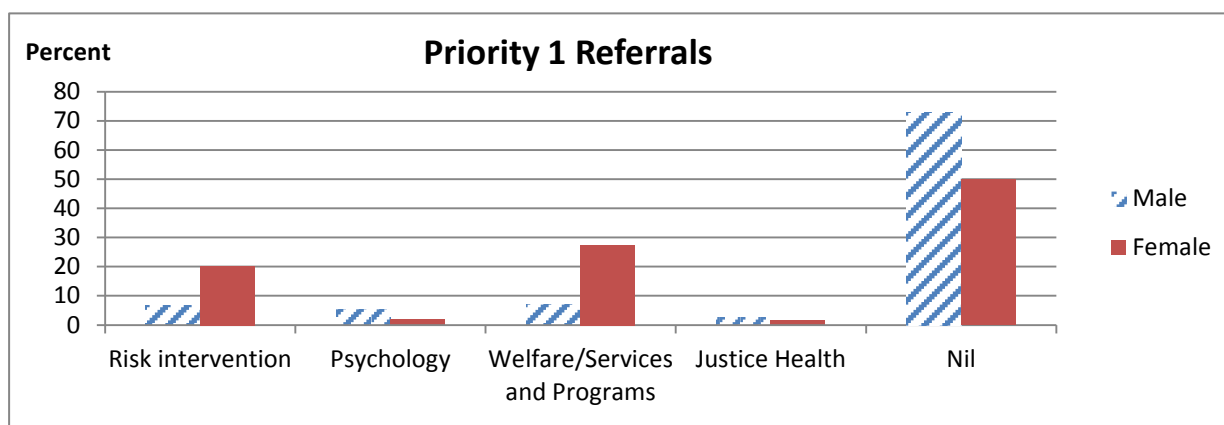
Characteristics	Male		Female		Total	
	No.	%	No.	%	No.	%
<b>Accommodation</b>						
Own Home	57	1.5	9	1.2	66	1.4
Rented	491	12.9	83	11.0	574	12.6
Shared accommodation	299	7.8	71	9.4	370	8.1
Living with family	1859	48.7	236	31.3	2095	45.8
Housing NSW	329	8.6	167	22.1	496	10.9
Unstable	107	2.8	39	5.2	146	3.2
Homeless	222	5.8	63	8.3	285	6.2
Other	95	2.5	18	2.4	113	2.5
Unknown/Not recorded	356	9.3	69	9.1	425	9.3
<b>Education and training</b>						
Completed Year 10 and Trade	755	19.8	135	17.9	890	19.5
Completed Year 10 only	766	20.1	132	17.5	898	19.6
Trade only	743	19.5	146	19.3	889	19.5
Neither Year 10 nor Trade	1551	40.7	342	45.3	1893	41.4
<b>Medical issues</b>						
Withdrawing from alcohol and drugs	127	3.3	53	7.0	180	3.9
Withdrawing from drugs	629	16.5	246	32.6	875	19.1
Withdrawing from alcohol	217	5.7	42	5.6	259	5.7
Not withdrawing	2842	74.5	414	54.8	3256	71.2
<b>Mental health</b>						
Treated for mental health issue/sought counselling	1185	31.1	381	50.5	1566	34.3
Treated for mental health issue only	369	9.7	113	15.0	482	10.5
Sought counselling only	702	18.4	93	12.3	795	17.4
Neither mental health treatment nor counselling	1559	40.9	168	22.3	1727	37.8
<b>Referrals</b>						
Pre-source screening	341	8.9	22	2.9	363	7.9
Immediate concerns	1477	38.7	110	14.6	1587	34.7
Stress factors	857	22.5	84	11.1	941	20.6
Education factors	1053	27.6	183	24.2	1236	27.0
Alcohol, other drugs and gambling	1479	38.8	217	28.7	1696	37.1
Self harm risk factors	382	10.0	119	15.8	501	11.0
<b>Priority 1 referrals</b>						
Risk intervention	260	6.8	153	20.3	413	9.0
Psychology	198	5.2	15	2.0	213	4.7
Welfare/Services and Programs	272	7.1	207	27.4	479	10.5
Justice Health	97	2.5	12	1.6	109	2.4
Nil	2775	72.7	377	49.9	3152	69.0

**Table 1.3: Demographic characteristics - Indigenous offenders received into custody**

Characteristics	Male		Female		Total	
	No.	%	No.	%	No.	%
<b>Priority 2 referrals</b>						
Psychology	510	13.4	79	10.5	589	12.9
AOD	1539	40.3	226	29.9	1765	38.6
Welfare/Services and Programs	301	7.9	40	5.3	341	7.5
Education	992	26.0	188	24.9	1180	25.8
Nil	1291	33.8	296	39.2	1587	34.7

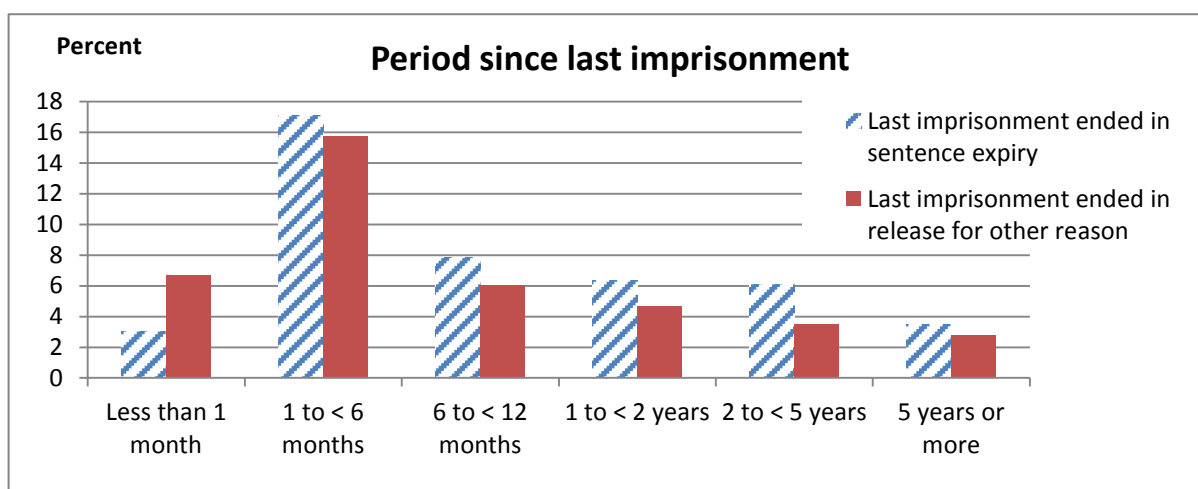
**Month of reception**

Jan-13	332	8.7	57	7.5	389	8.5
Feb-13	300	7.9	69	9.1	369	8.1
Mar-13	342	9.0	62	8.2	404	8.8
Apr-13	308	8.1	53	7.0	361	7.9
May-13	312	8.2	63	8.3	375	8.2
Jun-13	254	6.7	48	6.4	302	6.6
Jul-13	328	8.6	65	8.6	393	8.6
Aug-13	294	7.7	63	8.3	357	7.8
Sep-13	319	8.4	69	9.1	388	8.5
Oct-13	333	8.7	62	8.2	395	8.6
Nov-13	348	9.1	61	8.1	409	8.9
Dec-13	345	9.0	83	11.0	428	9.4



**Table 1.4: Criminogenic and operational characteristics - Indigenous offenders**

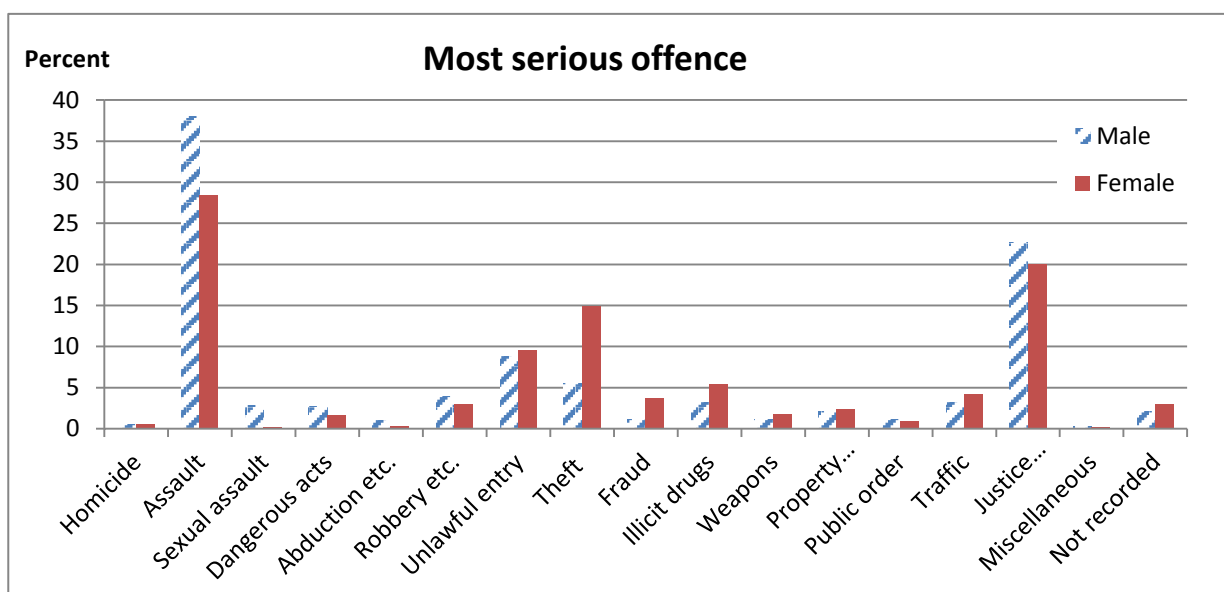
Characteristics	Male		Female		Total	
	No.	%	No.	%	No.	%
<b>Legal status on reception</b>						
- Unsentenced	2706	70.9	588	77.9	3294	72.1
- Sentenced	1109	29.1	167	22.1	1276	27.9
<b>Prior imprisonment in NSW correctional centre</b>						
- Prior Sentence	2752	72.1	467	61.9	3219	70.4
- Prior remand	449	11.8	146	19.3	595	13.0
- Prior community contact	325	8.5	76	10.1	401	8.8
- No prior CSNSW contact	289	7.6	66	8.7	355	7.8
- First time in custody (ISQ)	558	14.6	131	17.4	689	15.1
<b>Period since last imprisonment</b>						
<b>Last imprisonment ended in sentence expiry</b>						
Less than 1 month	122	3.2	16	2.1	138	3.0
1 to < 6 months	703	18.4	80	10.6	783	17.1
6 to < 12 months	316	8.3	43	5.7	359	7.9
1 to < 2 years	250	6.6	40	5.3	290	6.3
2 to < 5 years	247	6.5	32	4.2	279	6.1
5 years or more	136	3.6	24	3.2	160	3.5
<b>Last imprisonment ended in release for other reason</b>						
Less than 1 month	227	6.0	77	10.2	304	6.7
1 to < 6 months	561	14.7	160	21.2	721	15.8
6 to < 12 months	218	5.7	57	7.5	275	6.0
1 to < 2 years	180	4.7	33	4.4	213	4.7
2 to < 5 years	140	3.7	20	2.6	160	3.5
5 years or more	97	2.5	30	4.0	127	2.8
No prior imprisonment	618	16.2	143	18.9	761	16.7



**Table 1.4: Criminogenic and operational characteristics - Indigenous offenders**

Characteristics	Male		Female		Total	
	No.	%	No.	%	No.	%
<b>Most serious offence on reception</b>						
Homicide and related	17	0.4	4	0.5	21	0.5
Acts intended to cause injury	1448	38.0	214	28.3	1662	36.4
Sexual assault and related	105	2.8	1	0.1	106	2.3
Dangerous or negligent acts endang. persons	103	2.7	12	1.6	115	2.5
Abduction, harassment etc.	39	1.0	2	0.3	41	0.9
Robbery, extortion etc.	150	3.9	23	3.0	173	3.8
Unlawful entry with intent/burglary, B&E	335	8.8	72	9.5	407	8.9
Theft and related	210	5.5	113	15.0	323	7.1
Fraud, deception and related	44	1.2	28	3.7	72	1.6
Illicit drug offences	123	3.2	41	5.4	164	3.6
Weapons and explosives	43	1.1	13	1.7	56	1.2
Property damage and environmental pollution	80	2.1	18	2.4	98	2.1
Public order offences	43	1.1	7	0.9	50	1.1
Traffic and vehicle regulatory offences	122	3.2	32	4.2	154	3.4
Offences against justice procedures etc.	865	22.7	151	20.0	1016	22.2
Miscellaneous offences	9	0.2	1	0.1	10	0.2
Not recorded	79	2.1	23	3.0	102	2.2

<b>Diversity of offences</b>						
1	1270	33.3	239	31.7	1509	33.0
2	619	16.2	128	17.0	747	16.3
3 to 5	1135	29.8	197	26.1	1332	29.1
6 to 10	532	13.9	108	14.3	640	14.0
11 to 20	155	4.1	50	6.6	205	4.5
21 or more	25	0.7	10	1.3	35	0.8
Not recorded	79	2.1	23	3.0	102	2.2



**Table 1.4: Criminogenic and operational characteristics - Indigenous offenders**

Characteristics	Male		Female		Total	
	No.	%	No.	%	No.	%
<b>Correctional Centre of reception</b>						
Bathurst	139	3.6	32	4.2	171	3.7
Broken Hill	119	3.1	35	4.6	154	3.4
Cessnock	282	7.4	2	0.3	284	6.2
Goulburn	46	1.2	-	-	46	1.0
Grafton	314	8.2	29	3.8	343	7.5
John Morony	34	0.9	-	-	34	0.7
Junee	177	4.6	19	2.5	196	4.3
Kariong Juvenile	33	0.9	-	-	33	0.7
Long Bay Hospital	2	0.1	-	-	2	0.0
Metropolitan Remand And Reception Centre	1172	30.7	-	-	1172	25.6
Mid North Coast	262	6.9	38	5.0	300	6.6
Parklea	123	3.2	-	-	123	2.7
Silverwater Womens	-	-	500	66.2	500	10.9
South Coast	181	4.7	31	4.1	212	4.6
Tamworth	385	10.1	-	-	385	8.4
Wellington	546	14.3	69	9.1	615	13.5
<b>Level of Court of initial order</b>						
Supreme	5	0.1	-	-	5	0.1
District	110	2.9	18	2.4	128	2.8
Local	2936	77.0	592	78.4	3528	77.2
Childrens	45	1.2	4	0.5	49	1.1
Parole Board	609	16.0	79	10.5	688	15.1
Drug Court	110	2.9	62	8.2	172	3.8
Other Jurisdiction	-	-	-	-	-	-

**Table 1.4: Criminogenic and operational characteristics - Indigenous offenders**

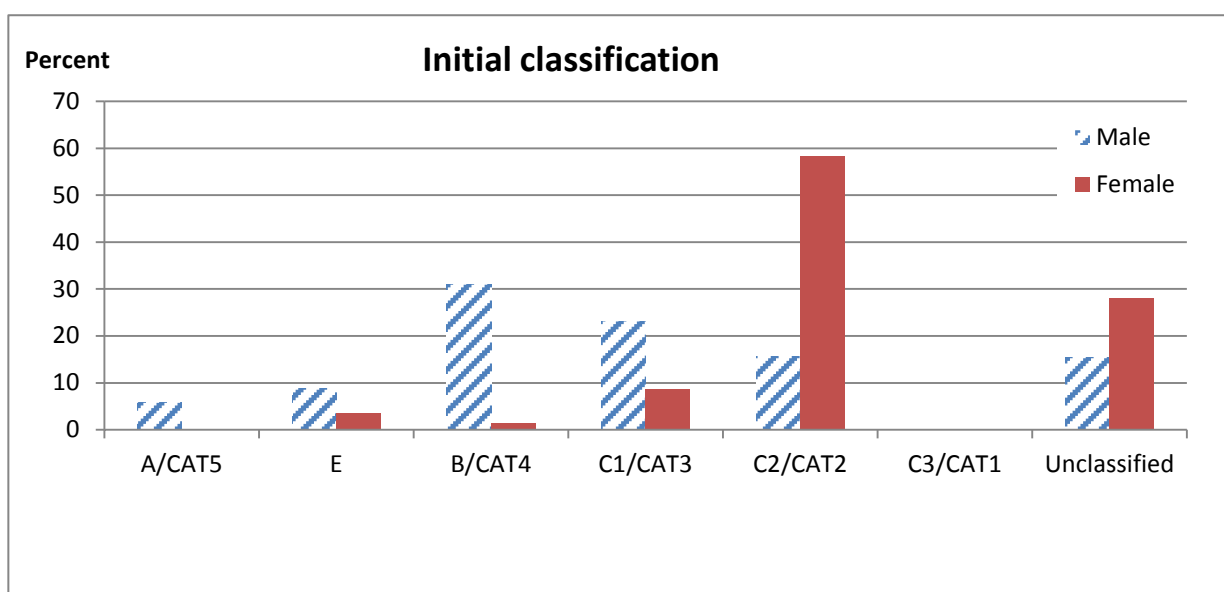
Characteristics	Male		Female		Total	
	No.	%	No.	%	No.	%
<b>Statistical Area of initial court</b>						
Capital Region	111	2.9	18	2.4	129	2.8
Central Coast	67	1.8	20	2.6	87	1.9
Central West	159	4.2	31	4.1	190	4.2
Coffs Harbour - Grafton	100	2.6	6	0.8	106	2.3
Far West and Orana	471	12.3	77	10.2	548	12.0
Hunter Valley exc Newcastle	92	2.4	15	2.0	107	2.3
Illawarra	88	2.3	10	1.3	98	2.1
Mid North Coast	229	6.0	37	4.9	266	5.8
Murray	67	1.8	8	1.1	75	1.6
New England and North West	343	9.0	49	6.5	392	8.6
Newcastle and Lake Macquarie	160	4.2	33	4.4	193	4.2
Richmond - Tweed	163	4.3	19	2.5	182	4.0
Riverina	95	2.5	12	1.6	107	2.3
Southern Highlands and Shoalhaven	52	1.4	12	1.6	64	1.4
Sydney - Baulkham Hills and Hawkesbury	-	-	-	-	-	-
Sydney - Blacktown	102	2.7	24	3.2	126	2.8
Sydney - City and Inner South	836	21.9	166	22.0	1002	21.9
Sydney - Eastern Suburbs	25	0.7	12	1.6	37	0.8
Sydney - Inner South West	17	0.4	6	0.8	23	0.5
Sydney - Inner West	17	0.4	8	1.1	25	0.5
Sydney - North Sydney and Hornsby	4	0.1	1	0.1	5	0.1
Sydney - Northern Beaches	-	-	-	-	-	-
Sydney - Outer South West	68	1.8	9	1.2	77	1.7
Sydney - Outer West and Blue Mountains	46	1.2	7	0.9	53	1.2
Sydney - Parramatta	376	9.9	137	18.1	513	11.2
Sydney - Ryde	1	0.0	1	0.1	2	0.0
Sydney - South West	29	0.8	10	1.3	39	0.9
Sydney - Sutherland	18	0.5	4	0.5	22	0.5
Migratory - Offshore - Shipping (NSW)	-	-	-	-	-	-
Special Purpose Codes SA4 (NSW)	-	-	-	-	-	-
Other outside NSW	-	-	-	-	-	-
Unknown	79	2.1	23	3.0	102	2.2

**Table 1.4: Criminogenic and operational characteristics - Indigenous offenders**

Characteristics	Male		Female		Total	
	No.	%	No.	%	No.	%
<b>Parole status on reception</b>						
Parole revoked prior to reception	520	13.6	67	8.9	587	12.8
Parole revoked after reception	287	7.5	26	3.4	313	6.8
Other community-based order	900	23.6	234	31.0	1134	24.8
No community-based order	2108	55.3	428	56.7	2536	55.5
<b>Initial classification on reception</b>						
A2	17	0.4	-	-	17	0.4
A2U	203	5.3	-	-	203	4.4
B	156	4.1	-	-	156	3.4
BU	1028	26.9	-	-	1028	22.5
C1	269	7.1	-	-	269	5.9
C1U	615	16.1	-	-	615	13.5
C2	597	15.6	-	-	597	13.1
CAT2	-	-	158	20.9	158	3.5
CAT3	-	-	7	0.9	7	0.2
CAT4	-	-	1	0.1	1	0.0
E1	10	0.3	-	-	10	0.2
E1U	12	0.3	1	0.1	13	0.3
E2	133	3.5	11	1.5	144	3.2
E2U	182	4.8	14	1.9	196	4.3
UCAT2	1	0.0	283	37.5	284	6.2
UCAT3	-	-	59	7.8	59	1.3
UCAT4	-	-	9	1.2	9	0.2
Unclassified - very short stay	141	3.7	46	6.1	187	4.1
Unclassified - short stay	279	7.3	90	11.9	369	8.1
Unclassified - Drug Court only	31	0.8	-	-	31	0.7
Unclassified - other	141	3.7	76	10.1	217	4.7
<b>On medication at initial classification</b>						
Currently on Methadone	189	5.0	102	13.5	291	6.4
Currently on Buprenorphine	8	0.2	-	-	8	0.2
Currently on Other pharmacotherapies	36	0.9	3	0.4	39	0.9
Multiple medications (derived)	-	-	-	-	-	-
Not on medication	2992	78.4	439	58.1	3431	75.1
No assessment	590	15.5	211	27.9	801	17.5

**Table 1.4: Criminogenic and operational characteristics - Indigenous offenders**

Characteristics	Male		Female		Total	
	No.	%	No.	%	No.	%
<b>On management program at initial classification</b>						
Special Management Area	286	7.5	6	0.8	292	6.4
Limited Association	69	1.8	1	0.1	70	1.5
Non-Association	12	0.3	-	-	12	0.3
Segregation	26	0.7	-	-	26	0.6
Short Term Management	-	-	-	-	-	-
None	2832	74.2	537	71.1	3369	73.7
No assessment	590	15.5	211	27.9	801	17.5





## Section 2:

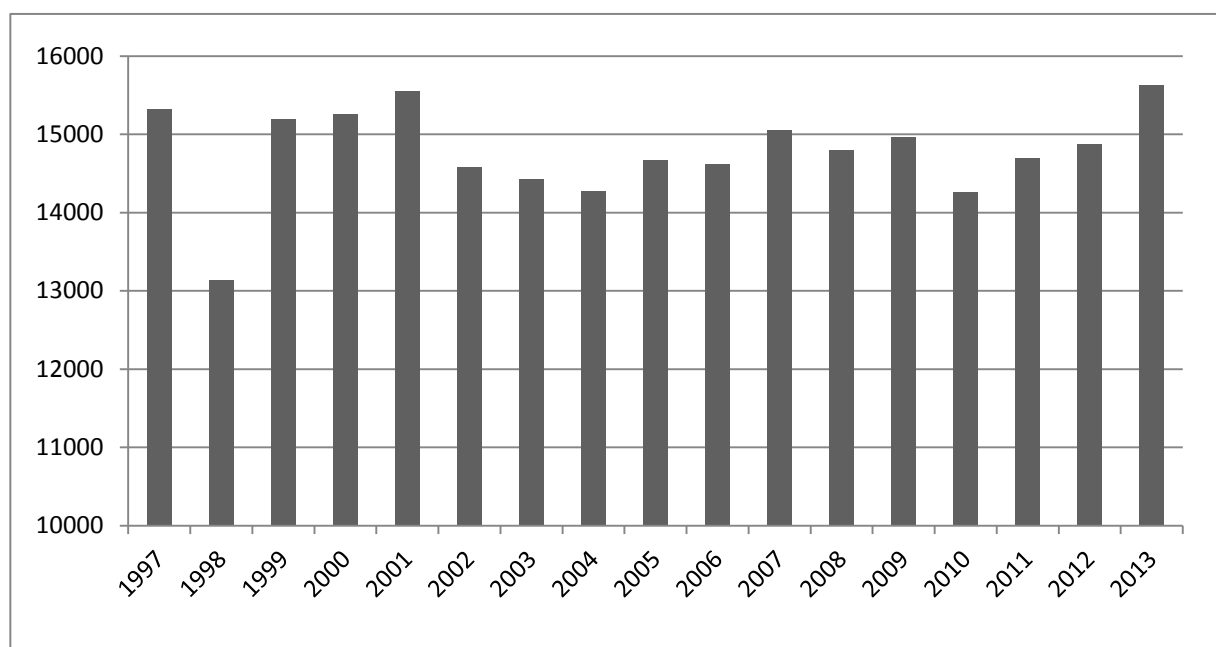
# Historical trends



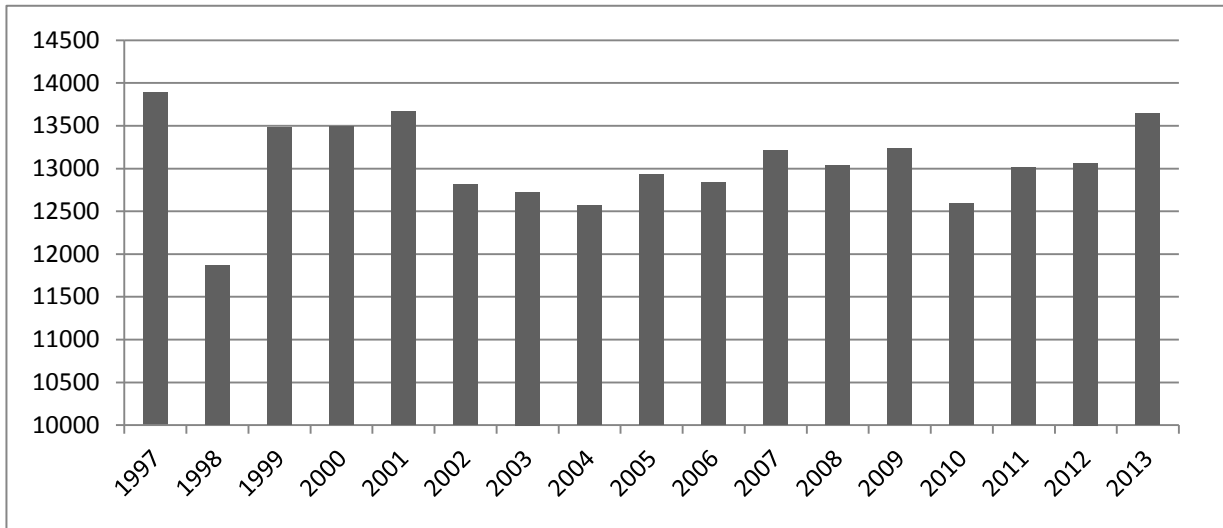
**Table 2.1: Trends in offenders received into NSW Correctional Centres - 1997 to 2013  
by gender and Indigenous status**

Calendar year	Males			Females			Indigenous status		
	ATSI	Non ATSI	Sub total	ATSI	Non ATSI	Sub total	ATSI	Non ATSI	TOTAL
1997	3182	10707	13889	434	1000	1434	3616	11707	15323
1998	2505	9364	11869	381	888	1269	2886	10252	13138
1999	2701	10781	13482	506	1207	1713	3207	11988	15195
2000	2743	10748	13491	556	1206	1762	3299	11954	15253
2001	2818	10847	13665	625	1263	1888	3443	12110	15553
2002	2797	10018	12815	608	1155	1763	3405	11173	14578
2003	2853	9872	12725	597	1110	1707	3450	10982	14432
2004	2888	9675	12563	605	1107	1712	3493	10782	14275
2005	2998	9938	12936	585	1146	1731	3583	11084	14667
2006	3213	9625	12838	652	1124	1776	3865	10749	14614
2007	3149	10063	13212	682	1161	1843	3831	11224	15055
2008	3247	9792	13039	632	1129	1761	3879	10921	14800
2009	3437	9802	13239	653	1075	1728	4090	10877	14967
2010	3306	9283	12589	601	1072	1673	3907	10355	14262
2011	3369	9647	13016	646	1027	1673	4015	10674	14689
2012	3572	9493	13065	700	1109	1809	4272	10602	14874
2013	3815	9828	13643	755	1223	1978	4570	11051	15621

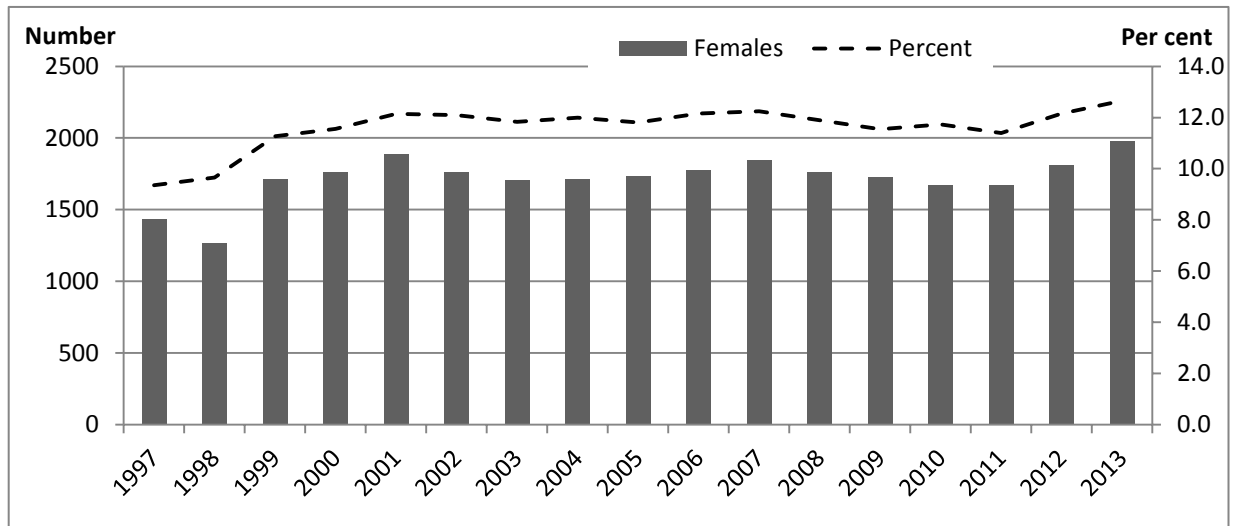
**Figure 2.1: Trends in total receptions into NSW Correctional Centres - 1997 to 2013**



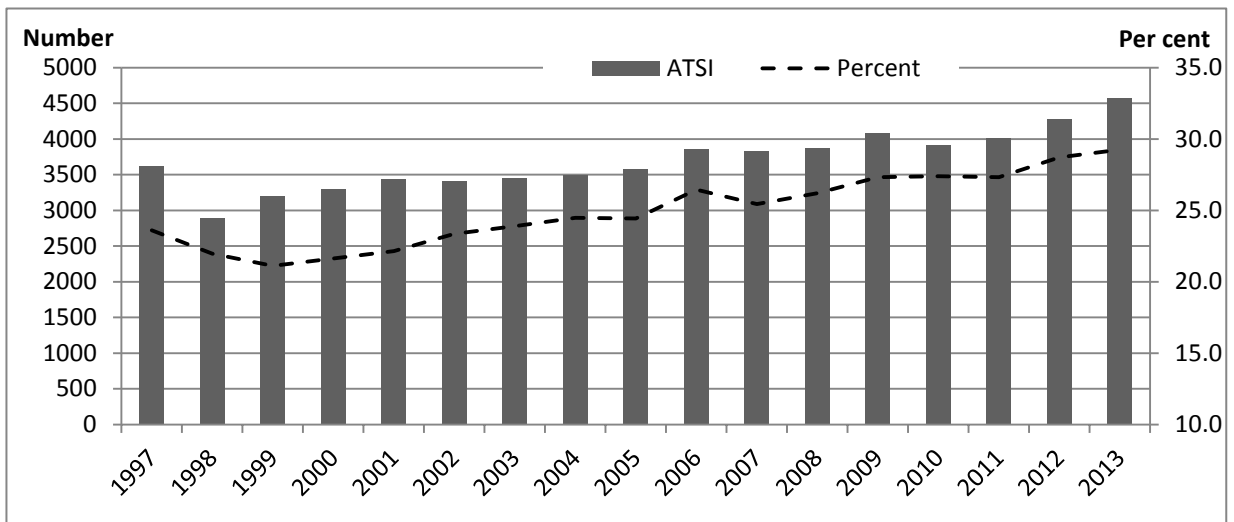
**Figure 2.2: Trends in receptions into NSW Correctional Centres - Males**



**Figure 2.3: Trends in receptions into NSW Correctional Centres - Females**



**Figure 2.4: Trends in receptions into NSW Correctional Centres - Indigenous offenders**



## EXPLANATORY NOTES

### (a) General information

This is the first statistical publication providing a detailed profile of offenders received into New South Wales Correctional Centres managed by Corrective Services NSW. The statistical data provides an overview of key demographic, criminogenic and operational characteristics of offenders received into correctional centres managed by Correctives Services NSW (CSNSW) during the calendar year 2013. Statistics detailing historical trends in receptions are also provided. Other statistical information regarding receptions into CSNSW correctional centres is also published by CSNSW in its *Statistical Report* based on financial years. This information can be obtained from the Corrective Services NSW website (<http://www.correctiveservices.nsw.gov.au>). The Australian Bureau of Statistics (ABS) also publish monthly statistics on sentenced prisoner receptions (see *Corrective Services Quarterly ABS Catalogue 4512.0*).

### (b) Scope of data collection

This publication contains summary statistics on offenders received into gazetted correctional centres in NSW during 2013. The data incorporates offenders received into correctional centres managed by CSNSW and two privately operated correctional centres (Junee and Parklea Correctional Centres). The statistics exclude offenders received into custody at police/court complexes managed by CSNSW who were subsequently discharge from custody without being transferred into a correctional centre during that episode.

Offenders received into non-custodial facilities managed by CSNSW such as Community Offender Community Offender Support Program Centres (COSP Centres) and community residential facilities (such as the Balund-a facility at Tabulam) are also excluded as these offenders are not held in full-time custody. Persons received into the NSW Department of Health Forensic Hospital (adjacent to Long Bay Complex) are also excluded as this facility is not a gazetted correctional centre nor is it managed by CSNSW.

### (c) Reception events

A reception event into a NSW correctional centre represents the commencement of a continuous period (or episode) of imprisonment under the management of CSNSW. A reception event and subsequent episode are defined as one of the following:

- i. an individual offender's first reception into a NSW correctional centre;
- ii. an offender returning to full-time custody following release from a previous episode of full-time custody which was terminated by the legal discharge of the offender (e.g. to parole, sentence completed, bail etc.);
- iii. an offender returning to full-time custody following a breach of a parole, licence or periodic detention order;
- iv. an offender returning to full-time custody following release/transfer to an institution other than a NSW correctional centre, transitional centre or police/court complex

operated by CSNSW (e.g. transfer to a psychiatric hospital, juvenile or interstate correctional institution).

In this publication offenders returned to custody following escape from a NSW Correctional Centre are not recorded as reception events. Offenders received into a correctional centre following transferred from another NSW correctional centre are also not recorded as reception events.

CSNSW manages a number of police/court cell complexes across NSW in addition to gazetted correctional centres. A significant proportion of offenders received into these complexes are “police bail refused” detainees awaiting bail determination before a magistrate. Many of these offenders are released from custody by the court (e.g. granted bail). Only where the court determines that the offender must remain in full-time custody (e.g. under sentence or on remand) are these offenders then transferred to a correctional centre. These reception events where offender is subsequently transferred from a police/court cell complex and received into a correctional centre are included in this publication. Those events where offenders are received and released from a police/court cell complex without ever being received into a gazetted correctional centre during that episode have been excluded.

Some offenders may be received and discharged from CSNSW custody many times over the period of a year. In these cases each reception event (meeting the above criteria) is included in this publication.

**(d) Indigenous status**

An offender is recorded as an Aboriginal or Torres Strait Islander (TSI) where they have identified as such (by self report) in any (current or previous) episode of imprisonment.

**(e) Marital status, country of birth, cultural background, language**

Demographic information relating to marital status, country of birth, cultural background and language spoken at home are based on information self-reported on reception into custody. The classification of country of birth, cultural background and language spoken at home are based on the relevant Australian Bureau of Statistics (ABS) standards (*Standard Australian Classification of Countries (SACC)* Cat. no. 1269.0; *Australian Standard Classification of Cultural and Ethnic Groups (ASCCEG)* Cat. no. 1249.0 and the *Australian Standard Classification of Languages* Cat. No. 1267.0). The classification of religion is based on the ABS *Australian Standard Classification of Religious Groups* Cat. no. 1266.0.

**(f) Children, accommodation, education, immediate medical and mental health and referrals**

Information relating to offenders’ children, accommodation status prior to reception, education and training attainment, immediate medical and mental health concerns has been obtained from the Intake Screening Questionnaire (ISQ) assessment conducted on

each reception. Recommendations for referrals to CSNSW and other services/programs have also been obtained from the ISQ.

**(f) Statistical Area of last known address**

The Statistical Area of last known address reported in this publication is based on the self-reported postcode of last known address recorded at the time of reception. Postcodes have been mapped to Statistical Area 4 (SA4) using the *Australian Statistical Geographical Standard (ASGS)* (*Australian Bureau of Statistics Catalogue No: 1270.0, ABS 2011*).

**(h) Legal status on reception**

Legal status on reception is based on imprisonment status recorded against each offender on reception. In this publication each reception has been classified under one of the following two legal status categories:

- i. Sentenced - offender was under sentence at time of reception; or
- ii. Remand - offender was held in custody after being remanded by a court.

Where an offender is received under sentence for one offence and on remand for another the legal status is reported as *Sentenced*. Where an offender's imprisonment status had not been recorded on the day of reception (or within one day) the imprisonment status is classified as *Remand*. Where possible the legal status on reception has been verified against legal orders pertaining to the offender recorded at time of reception.

**(i) Known prior full-time imprisonment as an adult**

Known prior imprisonment includes any episode of imprisonment within a gazetted correctional centre within NSW prior to each reception event (see Explanatory Note c). Prior full-time imprisonment excludes any episode of imprisonment served entirely within a police/court cell complexes managed by the CSNSW and any episode of imprisonment served by way of periodic detention. Where there is more than one period of prior full-time imprisonment of a particular sub-category, the highest sub-category is used. The sub-categories, from highest to lowest are:

- i. an episode in full-time custody under sentence;
- ii. an episode of imprisonment on remand;
- iii. prior community based order but no prior imprisonment;
- iv. no prior imprisonment or community-based order.

**(j) Period since last imprisonment**

Period since last imprisonment is based on the time between the reception event and the most recent discharge from a gazetted NSW correctional centre prior to that reception. The information is disaggregated by type of previous discharge to indicate those episodes which

ended when the offender had completed a sentence of full-time imprisonment and those episodes which ended for other reason (e.g. bail).

**(k) Most serious offence (MSO) on reception**

Although an offender may be initially imprisoned in relation to a number of offences, the information presented in this publication (unless otherwise stated) is based on the most serious of all offences recorded on the initial court order which resulted in the reception event (see Explanatory Note c). The most serious offence is determined on the basis of sentence length and where necessary offence seriousness. Offences are classified according to the *Australian and New Zealand Standard Offence Classification (ANZSOC)* (*Australian Bureau of Statistics Catalogue No: 1234.0, ABS 2011*). Generally, speaking, the most serious offence is the offence for which the longest sentence was imposed. For the purpose of this calculation remand orders are treated as having a sentence length of zero. Where the longest sentence (including zero in the case of remand orders) was imposed in relation to two or more offences from different ANZSOC groups, the most serious offence is the determined as the offence with the lowest (most serious) National Offence Index (NOI) associated with the ANZSOC group for that offence.

**(l) Diversity of offences**

The diversity of offences represents the number of unique ANZSOC offence groups associated with the first order issued by a court which resulted in the reception event (see Explanatory Note c). Rather than a simple count of offences this measure describes the range of offender behaviour as indicated by the number of ANZSOC offence groups for which the offender has been imprisoned.

**(m) Reception centre**

Reception centre represents the gazetted correctional where the reception event took place. Some offenders may have been received into custody and spent a short period of time in a police/court cell complexes managed by CSNSW (see Explanatory Note c). However the reported reception centre represents the first gazetted correctional centre into which the offender was received in each episode.

**(n) Level and Statistical Area of court of initial order**

This item represents the jurisdiction level (local, district court etc.) and ASGS Statistical Area (Level 4) of the court which issued the order resulting in the reception event. Offenders received into custody following breach of parole are reported as 'State Parole Authority', those detained awaiting deportation are reported as 'Immigration Authority' and those reported as 'Drug Court' include offenders remanded by the Drug Court (pending determination of or placement on their program), those returned to custody to serve as 'sanction' imposed for a breach of the Drug Court order or offenders placed into custody following termination from the drug court program. Other jurisdiction includes



interstate/overseas courts. In a very small number of cases no court order was received/recorded, sometimes as a result of the offenders being held for a very short period of time (less than 24 hours). In these cases the level of court is reported as *Local* court.

**(o) Parole status at time of reception**

This information indicates the level of community based supervision that the offender was subject to at the time of reception, including parole supervision or other community-based order.

**(p) Initial classification on reception**

Offenders received into correctional centres are classified in accordance with the *Crimes (Administration of Sentences) Regulation 2001* (Clauses 22, 23 and 24), incorporating the classification system for female offenders. Offenders received into the Compulsory Drug Treatment Centre are not classified according to the regulations and are reported separately. The security classification reported in this publication relates to the first classification following reception.

**(q) Medication and management status at initial classification**

Information on whether the offender was receiving medication in relation to drug-replacement therapy or psychological treatment or was managed under a special management program is based on information collated as part of the initial offender classification assessment (see explanatory note p).

**Symbols**

\* represents percentage values of less than 0.05%





Corrections Research Evaluation & Statistics  
Corrective Services NSW  
GPO Box 31  
Sydney NSW Australia

Telephone (02) 8346 1556  
Facsimile (02) 8346 1590

Email: [research.enquiries@dcs.nsw.gov.au](mailto:research.enquiries@dcs.nsw.gov.au)

Material published by  
Corrections Research Evaluation & Statistics includes  
Research Publications  
Research Bulletins  
Research Digests  
Statistical Publications