



NSW Bureau of Crime
Statistics and Research

NEW SOUTH WALES RECORDED CRIME STATISTICS

Quarterly Update
September Quarter 2023

This report presents data on crime reported to, or detected by, police and recorded on the NSW Police Force's Computerised Operational Policing System (COPS). Information is provided on 13 major offence categories, which include the most serious personal violence and property offences, plus a more detailed list of 62 specific offence types.

Published by the NSW Bureau of Crime Statistics and Research
December 2023

Phone: + 61 (2) 8688 9800

Email: bcsr@justice.nsw.gov.au

Website: www.bocsar.nsw.gov.au

ISSN: 1035-9044

This report is available in pdf format on our website and may be provided in alternative formats. Please contact us at bcsr@justice.nsw.gov.au.

© State of New South Wales through the NSW Department of Communities and Justice 2023. You may copy, distribute, display, download and otherwise freely deal with this work for any purpose, provided that you attribute the Department of Justice NSW as the owner. However, you must obtain permission if you wish to (a) charge others for access to the work (other than at cost), (b) include the work in advertising or a product for sale, or (c) modify the work.

CONTENTS

SECTION 1:	OVERVIEW OF TRENDS IN RECORDED CRIME	5
Figure 1.1	NSW long-term trend in violent offences	6
Figure 1.2	NSW long-term trend in property offences	6
Table 1.3	Violent and property offences by Statistical Area (SA4) over the five years to September 2023	7
Table 1.4	Recorded criminal incidents for major offences over the five years to September 2023	8
Table 1.5	Recorded criminal incidents for 62 offences over the two years to September 2023	9
Table 1.6	Recorded criminal incidents for 62 offences over the five years to September 2023	10
SECTION 2:	REGIONAL COMPARISONS Statistical Areas	11
Table 2.1	Two year trends and percent change in recorded criminal incidents for major offences by Statistical Area (SA4) over the two years to September 2023	12
Table 2.2	Ratio to NSW rate of recorded criminal incidents per 100,000 population for major offences by Statistical Area (SA4) over the 12 months to September 2023	13
Table 2.3	Number of major offences by Statistical Area (SA4) over the 12 months to September 2023	14
Table 2.4	Number of major offences by Statistical Area (SA4) over the 12 months to September 2022	15
SECTION 3:	LEGAL PROCEEDINGS	16
Table 3.1	Adults proceeded against by the NSW Police Force by method of legal proceeding over the five years to September 2023	17
Table 3.2	Young people proceeded against by the NSW Police Force by method of legal proceeding over the five years to September 2023	17
Table 3.3	Adults proceeded against to court by the NSW Police Force for all 62 criminal offences types over the two years to September 2023	18
Table 3.4	Young people proceeded against to court by the NSW Police Force for all 62 criminal offences over the two years to September 2023	19
Figure 3.5	Offences with the largest change in the number of adults proceeded against to court by the NSW Police Force between the 12 months to September 2022 and the 12 months to September 2023	20
Figure 3.6	Offences with the largest change in the number of young people proceeded against to court by the NSW Police Force between the 12 months to September 2022 and the 12 months to September 2023	20
Table 3.7	Incidents of all 62 criminal offence types by whether legal proceedings commenced within 90 days of reporting over the two years to June 2023	21
Figure 3.8	Percentage of recorded criminal incidents for major offences by whether legal proceedings commenced within 90 days of reporting over the two years to June 2023	22

SECTION 4:	POLICING ACTIVITY	23
Table 4.1	Selected policing activities over the five years to September 2023	24
Table 4.2	Non-criminal domestic episodes by Statistical Area (SA4) over the five years to September 2023	25
Table 4.3	Ratio to NSW rate of non-criminal domestic episodes per 100,000 population by Statistical Area (SA4) over the five years to September 2023	26
APPENDIX 1:	REGIONAL COMPARISONS Local Government Areas	27
Appendix Table 1.1	Trends in recorded criminal incidents for major offences, NSW LGAs Over the two years to September 2023	28
Appendix Table 1.2	Ratio to NSW rate of recorded criminal incidents per 100,000 population for major offences, NSW LGAs	31
Appendix Table 1.3	Number of recorded criminal incidents for major offences, NSW LGAs 12 months to September 2023	34
Appendix Table 1.4	Number of recorded criminal incidents for major offences, NSW LGAs	37
APPENDIX 2:	EXPLANATORY NOTES	40
Appendix 2.1	Explanatory Notes	41
APPENDIX 3:	LGAs IN STATISTICAL AREAS	44
Appendix Table 3.1	Local Government Areas in Greater Sydney Statistical Areas	45
Appendix Table 3.2	Local Government Areas in Regional Statistical Areas	46
Appendix Table 3.3	Greater Sydney Statistical Area Map	47
Appendix Table 3.4	Regional NSW Statistical Areas Map	48
APPENDIX 4:	OFFENCE CATEGORIES	49
Appendix 4.1	BOCSAR offences mapped to NSW Police Force incident categories	50

SECTION 1:

OVERVIEW OF

TRENDS IN

RECORDED CRIME

Figure 1.1: NSW long-term trend in violent offences

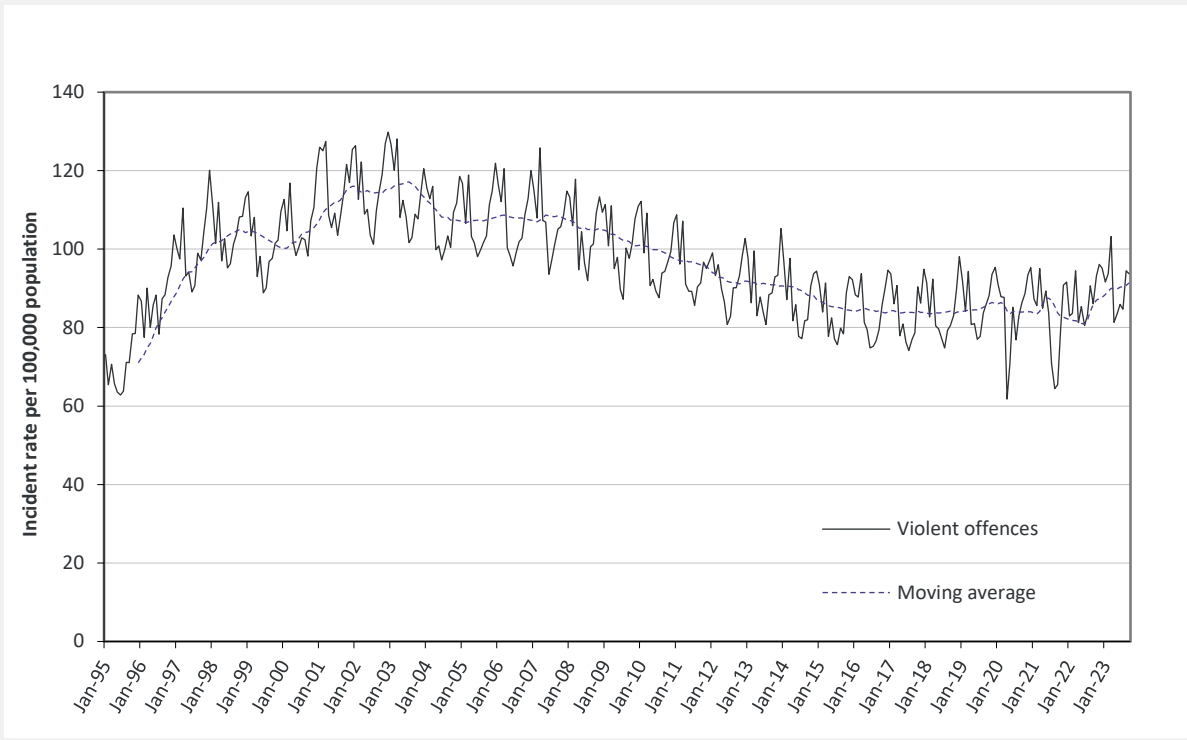
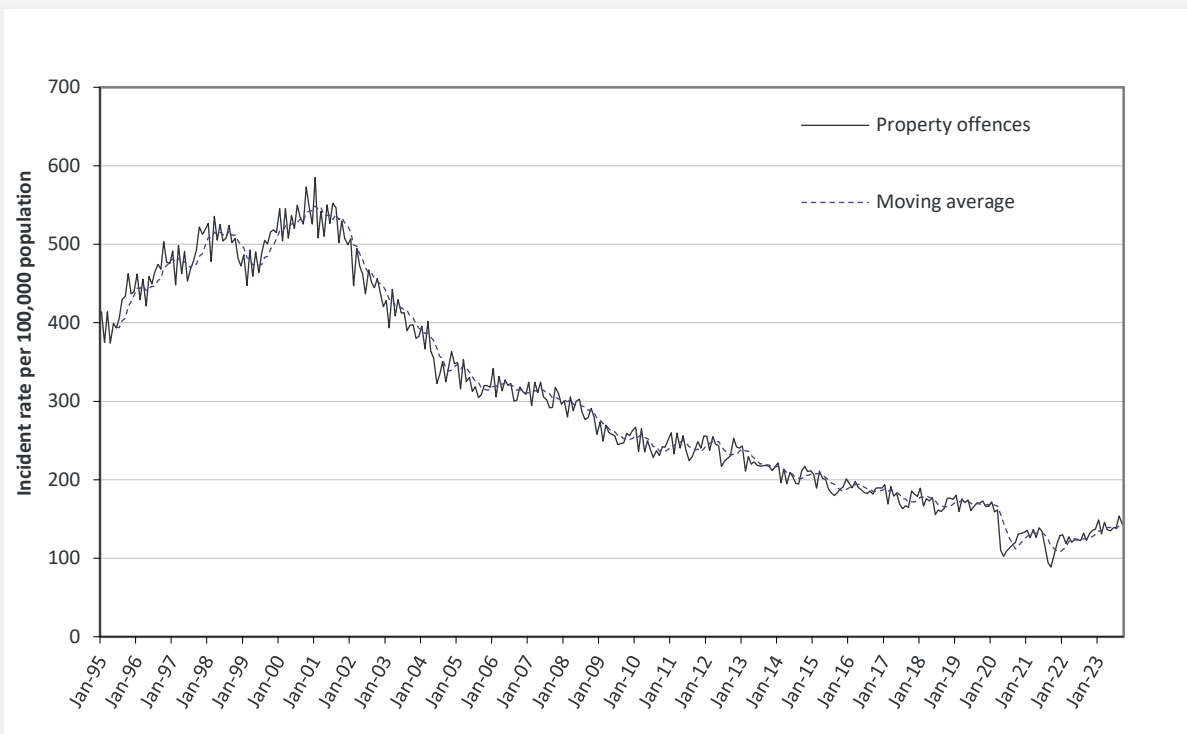


Figure 1.2: NSW long-term trend in property offences



Violent offences include: murder, attempted murder, manslaughter, assault - domestic violence related, assault - non-domestic violence related, assault police, robbery without a weapon, robbery with a firearm, robbery with a weapon not a firearm, sexual assault and sexual touching, sexual act and other sexual offences.

Property offences include: break and enter dwelling, break and enter non-dwelling, motor vehicle theft, steal from motor vehicle, steal from retail store, steal from dwelling, steal from person, stock theft and other theft.

Table 1.3: Violent and property offences by Statistical Area (SA4)

Over the five years to September 2023

Statistical Area	Trend and average annual percentage change			
	Violent Offences		Property Offences	
	2 Year Trend	5 Year Trend	2 Year Trend	5 Year Trend
Greater Sydney	Stable	Stable	16.3%	-5.8%
Baulkham Hills and Hawkesbury	Stable	Stable	21.4%	-6.2%
Blacktown	Stable	-1.3%	12.2%	-5.5%
Central Coast	Stable	Stable	18.4%	-7.3%
City and Inner South	Stable	Stable	18.2%	-6.1%
Eastern Suburbs	Stable	Stable	24.4%	Stable
Inner South West	Stable	Stable	5.4%	-7.2%
Inner West	15.9%	6.2%	13.7%	-3.1%
North Sydney and Hornsby	Stable	Stable	Stable	-10.7%
Northern Beaches	Stable	-8.7%	19.5%	-9.3%
Outer South West	Stable	Stable	12.5%	-7.3%
Outer West and Blue Mountains	Stable	Stable	19.5%	-4.2%
Parramatta	6.7%	Stable	19.7%	Stable
Ryde	Stable	-6.8%	20.3%	-6.9%
South West	12.2%	3.4%	21.7%	-5.3%
Sutherland	Stable	-2.8%	Stable	-8.7%
Regional NSW	Stable	3.7%	11.2%	-3.8%
Capital Region	16.7%	6.8%	Stable	-6.6%
Central West	Stable	Stable	10.9%	Stable
Coffs Harbour - Grafton	23.5%	10.0%	Stable	-4.7%
Far West and Orana	9.7%	Stable	15.1%	Stable
Hunter Valley excluding Newcastle	10.3%	6.3%	9.9%	-5.0%
Illawarra	Stable	Stable	17.2%	-3.6%
Mid North Coast	Stable	5.8%	Stable	-3.2%
Murray	Stable	5.0%	Stable	-6.1%
New England and North West	Stable	4.0%	Stable	Stable
Newcastle and Lake Macquarie	Stable	Stable	15.5%	-3.9%
Richmond - Tweed	Stable	Stable	20.2%	Stable
Riverina	Stable	Stable	Stable	-9.3%
Southern Highlands and Shoalhaven	Stable	Stable	33.4%	-5.1%
NSW	Stable	Stable	13.9%	-4.9%

NSW Recorded Crime Statistics, September Quarter 2023

Table 1.4: Recorded criminal incidents for major offences
Over the five years to September 2023

Offence category	12 months to September 2019	12 months to September 2020	12 months to September 2021	12 months to September 2022	12 months to September 2023	Trend and average annual percentage change	
						2 Year Trend	5 Year Trend
Murder	74	76	58	54	58	Stable	Down 5.9%
Domestic violence related assault	31,101	32,016	32,424	33,305	35,329	Stable	Up 3.2%
Non-domestic violence related assault	32,117	29,861	28,946	30,146	33,517	Up 11.2%	Stable
Sexual assault	6,159	6,858	7,659	7,803	7,978	Stable	Up 6.7%
Sexual touching, sexual act and other sexual offences	8,282	7,921	7,717	7,609	7,209	Stable	Down 3.4%
Robbery	2,517	2,219	1,925	1,687	1,996	Up 18.3%	Down 5.6%
Break and enter dwelling	25,589	20,993	18,699	18,289	19,767	Up 8.1%	Down 6.2%
Break and enter non-dwelling	10,129	8,069	7,189	7,257	8,358	Up 15.2%	Down 4.7%
Motor vehicle theft	13,543	12,091	10,910	11,649	13,844	Up 18.8%	Stable
Steal from motor vehicle	38,974	30,436	27,984	27,358	28,738	Up 5.0%	Down 7.3%
Steal from retail store	26,883	21,415	19,150	19,851	27,015	Up 36.1%	Stable
Other stealing offences	50,613	42,102	36,779	34,812	38,033	Up 9.3%	Down 6.9%
Malicious damage to property	57,317	54,111	50,636	48,877	49,086	Stable	Down 3.8%

NSW Recorded Crime Statistics, September Quarter 2023

Table 1.5: Recorded criminal incidents for 62 offences
Over the two years to September 2023

		Number of recorded criminal incidents		2 Year Trend	
Offence category		12 months to September 2022	12 months to September 2023	Trend test result	Annual average percentage change
Homicide	Murder	54	58	Stable	
	Attempted murder	13	13	n.c.	
	Murder accessory, conspiracy	2	0	n.c.	
	Manslaughter	9	7	n.c.	
Assault	Domestic violence related assault	33,305	35,329	Stable	
	Non-domestic violence related assault	30,146	33,517	Up	11.2%
	Assault Police	2,701	2,650	Stable	
Sexual offences	Sexual assault	7,803	7,978	Stable	
	Sexual touching, sexual act and other sexual offences	7,609	7,209	Stable	
Abduction and kidnapping		207	247	Up	19.3%
Robbery	Robbery without a weapon	902	1,129	Up	25.2%
	Robbery with a firearm	92	110	Stable	
	Robbery with a weapon not a firearm	693	757	Stable	
Blackmail and extortion		466	1,902	Up	308.2%
Intimidation, stalking and harassment		42,555	45,838	Stable	
Other offences against the person		1,301	1,618	Stable	
Theft	Break and enter dwelling	18,289	19,767	Up	8.1%
	Break and enter non-dwelling	7,257	8,358	Up	15.2%
	Receiving or handling stolen goods	7,632	7,938	Stable	
	Motor vehicle theft	11,649	13,844	Up	18.8%
	Steal from motor vehicle	27,358	28,738	Up	5.0%
	Steal from retail store	19,851	27,015	Up	36.1%
	Steal from dwelling	15,389	15,764	Stable	
	Steal from person	1,832	2,136	Up	16.6%
	Stock theft	245	278	Stable	
	Fraud	45,746	47,363	Up	3.5%
	Other theft	17,346	19,855	Up	14.5%
		3,294	4,346	Up	31.9%
Arson					
Malicious damage to property		48,877	49,086	Stable	
Drug offences	Possession and/or use of cocaine	2,662	2,413	Down	-9.4%
	Possession and/or use of narcotics	1,230	1,156	Stable	
	Possession and/or use of cannabis	15,615	15,169	Stable	
	Possession and/or use of amphetamines	6,541	6,407	Stable	
	Possession and/or use of ecstasy	682	1,230	Stable	
	Possession and/or use of other drugs	6,125	6,102	Stable	
	Dealing, trafficking in cocaine	1,231	1,141	Stable	
	Dealing, trafficking in narcotics	459	279	Stable	
	Dealing, trafficking in cannabis	674	498	Stable	
	Dealing, trafficking in amphetamines	2,201	1,795	Down	-18.4%
	Dealing, trafficking in ecstasy	165	217	Stable	
	Dealing, trafficking in other drugs	415	416	Stable	
	Cultivating cannabis	897	619	Down	-31.0%
	Manufacture drug	56	60	Stable	
	Importing drugs	180	141	Stable	
	Other drug offences	5,534	5,632	Stable	
Prohibited and regulated weapons offences		13,282	13,876	Stable	
Disorderly conduct	Trespass	9,709	12,116	Up	24.8%
	Offensive conduct	3,711	3,361	Down	-9.4%
	Offensive language	1,657	1,290	Down	-22.1%
	Criminal intent	2,527	2,810	Stable	
Betting and gaming offences		98	97	Stable	
Liquor offences		10,837	8,086	Down	-25.4%
Pornography offences		992	1,139	Stable	
Prostitution offences		20	20	Stable	
Against justice procedures	Escape custody	158	133	Stable	
	Breach Apprehended Violence Order	22,300	23,940	Stable	
	Breach bail conditions	53,072	52,999	Stable	
	Fail to appear	937	834	Down	-11.0%
	Resist or hinder officer	5,705	5,387	Down	-5.6%
	Other offences against justice procedures	2,325	2,392	Stable	
Transport regulatory offences		68,423	73,750	Stable	
Other offences		29,857	13,887	Down	-53.5%

Note: The increase in blackmail and extortion offence numbers in the most recent reporting period is due to a change in how NSW Police record ‘sextortion’ incidents. From mid-2022, sextortion offences are recorded as extortion. Previously they were recorded as fraud. As such, the series prior to mid-2022 is not comparable to the series after this time for this offence.

NSW Recorded Crime Statistics, September Quarter 2023

Table 1.6: Recorded criminal incidents for 62 offences
Over the five years to September 2023

		Number of recorded criminal incidents		5 Year Trend	
Offence category		12 months to September 2019	12 months to September 2023	Trend test result	Annual average percentage change
Homicide	Murder	74	58	Down	-5.9%
	Attempted murder	20	13	n.c.	
	Murder accessory, conspiracy	1	0	n.c.	
	Manslaughter	11	7	n.c.	
Assault	Domestic violence related assault	31,101	35,329	Up	3.2%
	Non-domestic violence related assault	32,117	33,517	Stable	
	Assault Police	2,499	2,650	Stable	
Sexual offences	Sexual assault	6,159	7,978	Up	6.7%
	Sexual touching, sexual act and other sexual offences	8,282	7,209	Down	-3.4%
Abduction and kidnapping		202	247	Stable	
Robbery	Robbery without a weapon	1,466	1,129	Down	-6.3%
	Robbery with a firearm	159	110	Down	-8.8%
	Robbery with a weapon not a firearm	892	757	Down	-4.0%
Blackmail and extortion		76	1,902	Up	123.7%
Intimidation, stalking and harassment		34,897	45,838	Up	7.1%
Other offences against the person		1,234	1,618	Up	7.0%
Theft	Break and enter dwelling	25,589	19,767	Down	-6.2%
	Break and enter non-dwelling	10,129	8,358	Down	-4.7%
	Receiving or handling stolen goods	8,619	7,938	Down	-2.0%
	Motor vehicle theft	13,543	13,844	Stable	
	Steal from motor vehicle	38,974	28,738	Down	-7.3%
	Steal from retail store	26,883	27,015	Stable	
	Steal from dwelling	18,901	15,764	Down	-4.4%
	Steal from person	3,938	2,136	Down	-14.2%
	Stock theft	439	278	Down	-10.8%
	Fraud	52,879	47,363	Down	-2.7%
	Other theft	27,335	19,855	Down	-7.7%
Arson		4,975	4,346	Down	-3.3%
Malicious damage to property		57,317	49,086	Down	-3.8%
Drug offences	Possession and/or use of cocaine	2,400	2,413	Stable	
	Possession and/or use of narcotics	1,146	1,156	Stable	
	Possession and/or use of cannabis	17,647	15,169	Down	-3.7%
	Possession and/or use of amphetamines	7,786	6,407	Down	-4.8%
	Possession and/or use of ecstasy	2,668	1,230	Down	-17.6%
	Possession and/or use of other drugs	5,610	6,102	Stable	
	Dealing, trafficking in cocaine	857	1,141	Stable	
	Dealing, trafficking in narcotics	976	279	Stable	
	Dealing, trafficking in cannabis	1,324	498	Down	-21.7%
	Dealing, trafficking in amphetamines	2,027	1,795	Stable	
	Dealing, trafficking in ecstasy	572	217	Down	-21.5%
	Dealing, trafficking in other drugs	528	416	Down	-5.8%
	Cultivating cannabis	1,230	619	Down	-15.8%
	Manufacture drug	63	60	Stable	
	Importing drugs	121	141	Stable	
	Other drug offences	6,445	5,632	Down	-3.3%
Prohibited and regulated weapons offences		15,890	13,876	Down	-3.3%
Disorderly conduct	Trespass	10,610	12,116	Stable	
	Offensive conduct	4,584	3,361	Down	-7.5%
	Offensive language	2,419	1,290	Down	-14.5%
	Criminal intent	2,470	2,810	Up	3.3%
Betting and gaming offences		168	97	Stable	
Liquor offences		11,803	8,086	Down	-9.0%
Pornography offences		717	1,139	Up	12.3%
Prostitution offences		23	20	n.c.	
Against justice procedures	Escape custody	169	133	Down	-5.8%
	Breach Apprehended Violence Order	17,404	23,940	Up	8.3%
	Breach bail conditions	46,702	52,999	Up	3.2%
	Fail to appear	522	834	Up	12.4%
	Resist or hinder officer	5,986	5,387	Down	-2.6%
	Other offences against justice procedures	1,457	2,392	Up	13.2%
Transport regulatory offences		109,906	73,750	Down	-9.5%
Other offences		14,473	13,887	Stable	

Note: The increase in blackmail and extortion offence numbers in the most recent reporting period is due to a change in how NSW Police record ‘sextortion’ incidents. From mid-2022, sextortion offences are recorded as extortion. Previously they were recorded as fraud. As such, the series prior to mid-2022 is not comparable to the series after this time for this offence.

SECTION 2:

REGIONAL

COMPARISONS

Statistical Areas

Table 2.1: Two year trends and percent change in recorded criminal incidents for major offences by Statistical Area (SA4)
Over the two years to September 2023

Statistical Area	Murder	Domestic violence related assault	Non-domestic violence related assault	Sexual assault	Sexual touching, sexual act and other sexual offences	Robbery	Break and enter dwelling	Break and enter non-dwelling	Motor vehicle theft	Steal from motor vehicle	Steal from retail store	Other stealing offences	Malicious damage to property
Greater Sydney	ns	ns	12.4	ns	ns	17.5	4.9	21.6	21.9	6.4	33.7	14.5	ns
Baulkham Hills and Hawkesbury		ns	ns	ns	ns		ns	53.4	ns	ns	41.2	11.8	ns
Blacktown		ns	ns	ns	-8.7	ns	ns	ns	29.3	ns	27.6	ns	ns
Central Coast		ns	ns	ns	ns	ns	13.6	ns	24.7	ns	35.7	ns	ns
City and Inner South		ns	10.6	ns	ns	28.0	11.2	ns	24.0	ns	25.4	21.8	ns
Eastern Suburbs		ns	ns	ns	ns	ns	ns	ns	ns	ns	36.2	32.3	ns
Inner South West		ns	ns	ns	ns	ns	ns	ns	ns	ns	61.7	ns	ns
Inner West		ns	26.5	ns	ns	ns	ns	ns	21.1	ns	ns	ns	ns
North Sydney and Hornsby		ns	24.3	ns	ns	ns	ns	ns	ns	ns	ns	ns	ns
Northern Beaches		ns	ns	ns	-16.9	ns	ns	75.0	ns	ns	35.4	40.1	ns
Outer South West		ns	20.3	ns	ns	ns	ns	ns	32.4	ns	38.2	ns	ns
Outer West and Blue Mountains		ns	ns	ns	ns	ns	ns	ns	23.8	18.4	30.7	ns	ns
Parramatta		ns	19.0	ns	ns	41.4	ns	ns	11.3	21.5	56.8	13.3	ns
Ryde		ns	ns	ns	ns		ns	ns	81.3	ns	67.0	ns	ns
South West		ns	22.5	ns	ns	ns	ns	41.8	44.9	22.5	23.9	ns	ns
Sutherland		ns	ns	ns	ns	ns	ns	ns	ns	ns	48.6	ns	-9.4
Regional NSW		ns	ns	ns	ns	19.3	10.9	11.2	16.2	ns	40.5	ns	ns
Capital Region		18.3	ns	ns	ns	ns	ns	ns	ns	ns	16.6	ns	ns
Central West		ns	ns	ns	ns	ns	22.4	ns	ns	ns	21.2	ns	ns
Coffs Harbour - Grafton		30.6	ns	ns	ns	90.6	ns	ns	ns	-18.6	50.2	ns	ns
Far West and Orana		11.5	ns	ns	ns	ns	ns	ns	21.9	ns	34.3	ns	14.6
Hunter Valley excluding Newcastle		21.8	ns	ns	ns	ns	18.0	47.3	23.5	ns	42.9	ns	ns
Illawarra		ns	ns	ns	ns	ns	ns	ns	ns	ns	43.0	ns	ns
Mid North Coast		ns	ns	ns	ns	ns	ns	-11.8	39.0	ns	44.9	-12.8	ns
Murray		ns	ns	ns	ns		ns	ns	ns	ns	22.0	ns	ns
New England and North West		ns	ns	ns	ns	50.9	18.7	ns	37.8	ns	26.0	ns	-2.0
Newcastle and Lake Macquarie		ns	ns	ns	ns	ns	ns	ns	ns	ns	41.5	ns	-6.1
Richmond - Tweed		-10.6	ns	ns	ns	ns	ns	ns	20.5	ns	132.6	ns	-8.5
Riverina		ns	ns	ns	ns	ns	ns	ns	ns	ns	ns	ns	ns
Southern Highlands and Shoalhaven		ns	ns	ns	ns	ns	ns	77.0	53.3	ns	81.9	ns	ns
NSW	ns	ns	11.2	ns	ns	18.3	8.1	15.2	18.8	5.0	36.1	9.3	ns

Table 2.2: Ratio to NSW rate of recorded criminal incidents per 100,000 population for major offences by Statistical Area (SA4)
Over the 12 months to September 2023

Statistical Area	Murder	Domestic violence related assault	Non-domestic violence related assault	Sexual assault	Sexual touching, sexual act and other sexual offences	Robbery	Break and enter dwelling	Break and enter non-dwelling	Motor vehicle theft	Steal from motor vehicle	Steal from retail store	Other stealing offences	Malicious damage to property
Greater Sydney	0.9	0.8	0.8	0.7	0.8	1.0	0.7	0.6	0.7	0.8	1.0	0.9	0.8
Baulkham Hills and Hawkesbury		0.4	0.3	0.4	0.5	0.5	0.4	0.5	0.4	0.4	0.4	0.5	0.4
Blacktown	1.0	1.2	1.0	0.8	1.0	1.8	1.0	0.6	1.1	1.1	1.2	1.0	1.0
Central Coast	0.8	1.2	1.0	1.2	1.3	0.8	0.7	0.8	0.9	1.0	1.0	0.8	1.1
City and Inner South	1.2	1.1	2.3	1.4	1.6	2.4	0.9	1.2	0.8	0.9	3.0	3.1	1.4
Eastern Suburbs	1.1	0.7	0.9	0.9	0.9	0.6	0.7	0.4	0.7	0.7	1.3	1.1	0.7
Inner South West	1.4	0.9	0.6	0.6	0.6	0.7	0.5	0.4	0.6	0.6	0.6	0.6	0.6
Inner West	0.9	0.6	0.7	0.7	0.7	0.7	0.8	1.0	0.6	0.8	0.7	0.9	0.6
North Sydney and Hornsby	0.7	0.3	0.4	0.4	0.6	0.4	0.5	0.4	0.3	0.4	0.7	0.5	0.4
Northern Beaches		0.2	0.5	0.5	0.5	0.5	0.3	0.4	0.4	0.4	0.8	0.6	0.5
Outer South West	0.9	1.0	0.8	1.0	1.0	0.8	0.5	0.6	0.8	0.7	1.0	0.6	0.9
Outer West and Blue Mountains	1.7	1.1	1.1	1.1	1.1	0.9	1.0	1.0	1.0	1.2	1.1	0.9	1.2
Parramatta	1.1	0.9	0.9	0.7	0.8	1.5	1.1	0.8	1.0	1.2	1.0	1.1	0.7
Ryde		0.3	0.3	0.4	0.4	0.4	0.6	0.4	0.5	0.5	0.6	0.6	0.4
South West	0.9	1.0	0.8	0.7	0.8	1.1	0.7	0.6	0.9	0.9	0.7	0.8	0.7
Sutherland		0.6	0.5	0.5	0.6	0.5	0.4	0.2	0.3	0.4	0.6	0.5	0.6
Regional NSW	1.2	1.4	1.2	1.4	1.3	1.1	1.6	1.7	1.5	1.4	1.0	1.2	1.4
Capital Region		1.0	1.0	0.9	1.0	0.5	0.7	1.0	0.7	0.7	0.6	0.9	1.1
Central West	2.0	1.6	1.4	1.4	1.4	1.1	2.1	1.8	1.5	1.4	0.9	1.2	1.6
Coffs Harbour - Grafton	1.9	1.7	1.5	1.8	1.6	1.7	1.3	1.7	1.6	1.2	1.0	1.3	1.5
Far West and Orana	2.4	3.6	2.4	1.7	2.1	1.4	4.1	5.5	3.1	2.5	1.6	2.2	3.2
Hunter Valley excluding Newcastle	1.0	1.5	1.2	1.4	1.3	0.9	1.1	1.9	1.6	1.2	1.0	1.3	1.5
Illawarra	1.3	0.7	0.9	1.0	1.0	0.9	0.8	0.8	0.9	1.4	1.4	0.9	1.0
Mid North Coast	1.8	1.6	1.2	1.2	1.4	1.0	1.7	1.6	1.6	1.0	0.9	1.3	1.5
Murray	2.3	1.4	1.3	1.5	1.1	0.9	1.4	2.4	1.5	1.9	0.8	1.3	1.6
New England and North West	1.5	1.9	1.7	2.0	1.7	1.9	3.7	2.3	2.5	1.9	1.2	1.4	2.1
Newcastle and Lake Macquarie	0.4	1.0	1.1	1.4	1.0	1.4	1.5	1.3	1.7	2.0	1.3	1.2	1.2
Richmond - Tweed	1.6	0.9	1.1	1.2	1.2	1.1	1.2	1.6	1.5	1.1	0.8	1.1	1.1
Riverina		1.5	1.3	1.6	1.4	0.6	1.8	1.8	1.1	1.2	1.0	1.2	1.6
Southern Highlands and Shoalhaven	1.7	0.9	0.9	1.1	1.0	0.6	0.8	1.3	0.8	0.7	0.8	0.7	1.3
NSW	1.0	1.0	1.0	1.0	1.0	1.0	1.0	1.0	1.0	1.0	1.0	1.0	1.0

NSW Recorded Crime Statistics, September Quarter 2023

Table 2.3: Number of major offences by Statistical Area (SA4)
Over the 12 months to September 2023

Statistical Area	Murder	Domestic violence related assault	Non-domestic violence related assault	Sexual assault	Sexual touching, sexual act and other sexual offences	Robbery	Break and enter dwelling	Break and enter non-dwelling	Motor vehicle theft	Steal from motor vehicle	Steal from retail store	Other stealing offences	Malicious damage to property
Greater Sydney	33	18,613	18,022	3,885	3,921	1,253	8,898	3,359	6,597	14,823	17,101	22,301	24,245
Baulkham Hills and Hawkesbury	0	475	369	108	116	30	262	135	177	353	384	569	669
Blacktown	3	2,110	1,695	335	348	184	972	236	773	1,621	1,584	1,866	2,512
Central Coast	2	1,772	1,476	400	388	67	619	280	530	1,217	1,125	1,301	2,388
City and Inner South	3	1,638	3,252	470	485	201	716	421	475	1,035	3,364	4,930	2,781
Eastern Suburbs	2	785	1,024	221	209	41	444	104	333	630	1,170	1,402	1,157
Inner South West	6	2,324	1,558	343	312	105	781	254	654	1,379	1,258	1,580	2,287
Inner West	2	787	849	197	194	54	581	309	333	891	752	1,320	1,158
North Sydney and Hornsby	2	561	624	181	218	38	493	188	215	641	938	1,005	1,003
Northern Beaches	0	266	509	127	123	33	222	105	177	379	684	789	789
Outer South West	2	1,295	1,032	293	259	59	393	181	417	773	991	838	1,592
Outer West and Blue Mountains	4	1,616	1,527	346	341	76	797	333	578	1,414	1,222	1,395	2,337
Parramatta	4	1,936	1,818	340	368	181	1,289	399	878	2,199	1,682	2,476	2,182
Ryde	0	298	280	72	81	21	309	86	174	369	389	573	457
South West	3	2,142	1,579	334	356	132	796	278	752	1,598	1,118	1,760	2,160
Sutherland	0	608	430	118	123	31	224	50	131	324	440	497	773
Regional NSW	25	16,710	14,320	3,801	3,198	736	10,869	4,998	7,246	13,913	9,914	15,725	24,788
Capital Region	0	1,084	942	213	220	28	435	237	302	554	512	1,015	1,538
Central West	3	1,473	1,243	304	270	56	1,082	395	556	1,093	645	1,238	2,090
Coffs Harbour - Grafton	2	1,111	888	261	207	61	456	258	399	627	494	869	1,294
Far West and Orana	2	1,839	1,145	202	216	41	1,183	666	617	1,041	627	1,236	2,242
Hunter Valley excluding Newcastle	2	1,909	1,430	418	336	64	806	573	803	1,215	930	1,738	2,586
Illawarra	3	988	1,106	301	271	66	643	257	500	1,518	1,436	1,309	1,888
Mid North Coast	3	1,552	1,119	267	290	55	965	368	620	838	710	1,399	2,037
Murray	2	768	667	180	123	26	427	303	313	848	327	770	1,174
New England and North West	2	1,587	1,340	369	281	86	1,669	435	799	1,240	761	1,254	2,437
Newcastle and Lake Macquarie	1	1,708	1,797	535	349	136	1,447	538	1,135	2,821	1,742	2,136	2,958
Richmond - Tweed	3	990	1,171	314	275	69	745	435	675	1,033	721	1,309	1,690
Riverina	0	1,104	880	260	212	26	712	310	297	676	556	903	1,592
Southern Highlands and Shoalhaven	2	597	592	177	148	22	299	223	230	409	453	549	1,262
NSW	58	35,329	33,517	7,978	7,209	1,996	19,767	8,358	13,844	28,738	27,015	38,033	49,086

NSW Recorded Crime Statistics, September Quarter 2023

Table 2.4: Number of major offences by Statistical Area (SA4)
Over the 12 months to September 2022

Statistical Area	Murder	Domestic violence related assault	Non-domestic violence related assault	Sexual assault	Sexual touching, sexual act and other sexual offences	Robbery	Break and enter dwelling	Break and enter non-dwelling	Motor vehicle theft	Steal from motor vehicle	Steal from retail store	Other stealing offences	Malicious damage to property
Greater Sydney	36	17,949	16,028	3,757	4,085	1,066	8,486	2,762	5,413	13,930	12,794	19,473	24,113
Baulkham Hills and Hawkesbury	2	474	323	143	142	19	253	88	150	276	272	509	708
Blacktown	4	2,019	1,538	338	381	149	897	239	598	1,581	1,241	1,732	2,671
Central Coast	6	1,657	1,508	418	368	75	545	242	425	1,179	829	1,062	2,253
City and Inner South	5	1,548	2,941	393	517	157	644	401	383	1,097	2,683	4,049	2,706
Eastern Suburbs	0	672	937	183	219	31	399	82	268	613	859	1,060	1,100
Inner South West	6	2,144	1,395	288	346	109	822	263	672	1,493	778	1,576	2,154
Inner West	2	708	671	175	185	51	562	181	275	788	651	1,225	1,113
North Sydney and Hornsby	0	549	502	197	189	37	505	152	187	636	820	998	1,037
Northern Beaches	0	253	473	137	148	29	224	60	164	456	505	563	785
Outer South West	2	1,401	858	259	288	62	401	109	315	827	717	825	1,542
Outer West and Blue Mountains	0	1,564	1,346	381	374	87	735	237	467	1,194	935	1,235	2,413
Parramatta	8	1,947	1,528	360	376	128	1,249	345	789	1,810	1,073	2,186	2,135
Ryde	0	320	278	77	84	15	301	107	96	334	233	509	520
South West	1	2,023	1,289	276	346	92	758	196	519	1,304	902	1,500	2,123
Sutherland	0	670	441	132	122	25	191	60	105	342	296	444	853
Regional NSW	17	15,353	13,107	3,603	3,390	617	9,803	4,495	6,236	13,427	7,057	15,332	24,681
Capital Region	0	916	756	216	222	28	387	281	313	664	439	952	1,477
Central West	1	1,412	1,136	321	311	55	884	390	500	950	532	1,261	2,251
Coffs Harbour - Grafton	0	851	776	193	194	32	475	269	387	770	329	933	1,288
Far West and Orana	0	1,650	988	221	248	48	1,071	564	506	1,001	467	1,056	1,956
Hunter Valley excluding Newcastle	0	1,567	1,296	451	387	50	683	389	650	1,365	651	1,779	2,468
Illawarra	1	913	992	278	270	61	618	232	481	1,352	1,004	1,143	1,806
Mid North Coast	1	1,354	1,057	279	325	42	939	417	446	814	490	1,605	2,075
Murray	2	773	641	139	154	17	388	253	286	864	268	723	1,283
New England and North West	1	1,576	1,220	309	264	57	1,406	410	580	1,082	604	1,209	2,486
Newcastle and Lake Macquarie	3	1,665	1,741	477	380	118	1,286	545	962	2,400	1,231	2,076	3,149
Richmond - Tweed	5	1,108	1,126	267	245	51	669	359	560	977	310	1,215	1,846
Riverina	1	1,006	843	251	194	34	721	260	415	847	483	901	1,567
Southern Highlands and Shoalhaven	2	562	535	201	196	24	276	126	150	341	249	479	1,029
NSW	54	33,305	30,146	7,803	7,609	1,687	18,289	7,257	11,649	27,358	19,851	34,812	48,877

SECTION 3:

LEGAL

PROCEEDINGS

Table 3.1: Adults proceeded against by the NSW Police Force by method of legal proceeding
Over the five years to September 2023

Method of legal proceeding	Adults proceeded against					2 Year Trend		5 Year Trend	
	12 months to September 2019	12 months to September 2020	12 months to September 2021	12 months to September 2022	12 months to September 2023	Number change	Percentage change	Number change	Average annual percentage change
Proceeded against to court (offence)	149,239	147,000	143,544	151,893	156,975	5,082	Stable	7,736	1.3%
Proceeded against to court (breach of bail)	6,689	8,068	7,205	7,902	7,836	-66	Stable	1,147	4.0%
Court diversion	13,505	11,073	8,893	8,877	9,256	379	Stable	-4,249	-9.0%
Criminal Infringement Notice	8,757	7,094	5,824	6,019	6,554	535	Stable	-2,203	-7.0%
Cannabis or other drug caution	4,748	3,979	3,069	2,858	2,702	-156	Stable	-2,046	-13.1%

Table 3.2: Young people proceeded against by the NSW Police Force by method of legal proceeding
Over the five years to September 2023

Method of legal proceeding	Young people proceeded against					2 Year Trend		5 Year Trend	
	12 months to September 2019	12 months to September 2020	12 months to September 2021	12 months to September 2022	12 months to September 2023	Number change	Percentage change	Number change	Average annual percentage change
Proceeded against to court (offence)	9,836	9,814	9,582	9,893	10,686	793	8.0%	850	Stable
Proceeded against to court (breach of bail)	1,708	1,572	1,405	1,422	1,694	272	19.1%	-14	Stable
Court diversion	10,400	10,050	12,009	10,597	11,324	727	Stable	924	2.2%
Youth Justice Conference	738	822	796	623	956	333	53.5%	218	Stable
Caution Young Offenders Act	7,008	6,669	7,036	6,547	7,264	717	11.0%	256	Stable
Warning Young Offenders Act	2,654	2,559	4,177	3,427	3,104	-323	Stable	450	4.0%

NSW Recorded Crime Statistics, September Quarter 2023

Table 3.3: Adults proceeded against to court by the NSW Police Force for all 62 criminal offences types

Over the two years to September 2023

		12 months to September 2022		12 months to September 2023		2 Year Trend	
		No. proceeded to court	% proceeded to court	No. proceeded to court	% proceeded to court	Trend test result	Percentage change
Offence category							
Homicide	Murder	100	100.0%	91	100.0%	Stable	
	Attempted murder	15	100.0%	6	100.0%	n.c.	
	Murder accessory, conspiracy	1	100.0%	0		n.c.	
	Manslaughter	6	100.0%	7	100.0%	n.c.	
Assault	Domestic violence related assault	14,134	99.8%	14,566	99.9%	Stable	
	Non-domestic violence related assault	6,943	96.7%	7,211	96.5%	Stable	
	Assault Police	1,491	99.9%	1,428	99.9%	Stable	
Sexual offences	Sexual assault	774	100.0%	833	100.0%	Stable	
	Sexual touching, sexual act and other sexual offences	1,376	97.9%	1,418	98.1%	Stable	
Abduction and kidnapping		196	100.0%	184	100.0%	Stable	
Robbery	Robbery without a weapon	333	100.0%	374	99.7%	Up	12.3%
	Robbery with a firearm	77	100.0%	70	100.0%	Stable	
	Robbery with a weapon not a firearm	296	100.0%	294	100.0%	Stable	
Blackmail and extortion		18	100.0%	30	100.0%	n.c.	
Intimidation, stalking and harassment		14,201	99.0%	15,070	99.0%	Stable	
Other offences against the person		245	96.8%	320	96.7%	Stable	
Theft	Break and enter dwelling	2,316	99.7%	2,431	99.7%	Stable	
	Break and enter non-dwelling	1,211	99.3%	1,378	99.5%	Stable	
	Receiving or handling stolen goods	3,879	97.5%	4,290	98.2%	Up	10.6%
	Motor vehicle theft	1,365	100.0%	1,465	99.7%	Stable	
	Steal from motor vehicle	895	98.7%	1,058	98.8%	Stable	
	Steal from retail store	4,945	68.0%	7,405	71.7%	Up	49.7%
	Steal from dwelling	770	95.3%	802	95.1%	Stable	
	Steal from person	196	98.5%	237	97.9%	Stable	
	Stock theft	6	100.0%	7	100.0%	n.c.	
	Fraud	3,800	98.7%	4,081	98.6%	Up	7.4%
	Other theft	1,442	88.5%	1,685	91.0%	Up	16.9%
Arson		168	93.9%	160	84.2%	Stable	
Malicious damage to property		4,383	99.3%	4,409	99.3%	Stable	
Drug offences	Possession and/or use of cocaine	1,556	98.0%	1,355	93.7%	Down	-12.9%
	Possession and/or use of narcotics	549	99.6%	527	99.6%	Stable	
	Possession and/or use of cannabis	4,921	63.4%	4,492	62.5%	Stable	
	Possession and/or use of amphetamines	2,800	99.4%	2,752	99.2%	Stable	
	Possession and/or use of ecstasy	303	74.6%	429	52.6%	Stable	
	Possession and/or use of other drugs	1,516	97.7%	1,505	93.0%	Stable	
	Dealing, trafficking in cocaine	725	100.0%	855	100.0%	Stable	
	Dealing, trafficking in narcotics	153	100.0%	131	100.0%	Stable	
	Dealing, trafficking in cannabis	366	100.0%	340	99.7%	Stable	
	Dealing, trafficking in amphetamines	757	100.0%	659	100.0%	Stable	
	Dealing, trafficking in ecstasy	79	100.0%	98	100.0%	Stable	
	Dealing, trafficking in other drugs	199	100.0%	217	100.0%	Stable	
	Cultivating cannabis	564	100.0%	401	100.0%	Down	-28.9%
	Manufacture drug	44	100.0%	44	100.0%	Stable	
	Importing drugs	99	99.0%	88	100.0%	Stable	
	Other drug offences	618	97.3%	619	96.7%	Stable	
Prohibited and regulated weapons offences		2,850	86.5%	2,874	87.3%	Stable	
Disorderly conduct	Trespass	1,095	64.5%	1,566	71.5%	Up	43.0%
	Offensive conduct	295	14.2%	303	17.0%	Stable	
	Offensive language	111	13.6%	89	14.5%	Down	-19.8%
	Criminal intent	1,473	99.7%	1,660	99.7%	Stable	
Betting and gaming offences		17	73.9%	11	78.6%	n.c.	
Liquor offences		139	5.6%	136	6.0%	Stable	
Pornography offences		224	100.0%	282	100.0%	Up	25.9%
Prostitution offences		1	100.0%	1	100.0%	n.c.	
Against justice procedures	Escape custody	70	100.0%	66	100.0%	Stable	
	Breach Apprehended Violence Order	12,063	100.0%	12,678	100.0%	Stable	
	Breach bail conditions	7,902	100.0%	7,836	100.0%	Stable	
	Fail to appear	15	100.0%	13	100.0%	n.c.	
	Resist or hinder officer	1,585	82.3%	1,472	84.9%	Down	-7.1%
	Other offences against justice procedures	1,046	100.0%	1,220	100.0%	Up	16.6%
Transport regulatory offences		427	1.1%	383	1.1%	Stable	
Other offences		2,342	17.1%	1,967	35.0%	Down	-16.0%

NSW Recorded Crime Statistics, September Quarter 2023

Table 3.4: Young people proceeded against to court by the NSW Police Force for all 62 criminal offences
Over the two years to September 2023

		12 months to September 2022		12 months to September 2023		2 Year Trend	
Offence category		No. proceeded to court	% proceeded to court	No. proceeded to court	% proceeded to court	Trend test result	Percentage change
Homicide	Murder	12	100.0%	4	100.0%	n.c.	
	Attempted murder	0		0		n.c.	
	Murder accessory, conspiracy	0		0		n.c.	
	Manslaughter	0		0		n.c.	
Assault	Domestic violence related assault	453	39.3%	456	38.6%	Stable	
	Non-domestic violence related assault	792	36.0%	795	29.3%	Stable	
	Assault Police	122	77.2%	128	76.2%	Stable	
Sexual offences	Sexual assault	132	99.2%	99	98.0%	Stable	
	Sexual touching, sexual act and other sexual offences	92	77.3%	72	72.0%	Stable	
Abduction and kidnapping		6	100.0%	3	100.0%	n.c.	
Robbery	Robbery without a weapon	275	93.5%	314	93.5%	Stable	
	Robbery with a firearm	11	100.0%	26	92.9%	n.c.	
	Robbery with a weapon not a firearm	155	96.9%	207	98.1%	Stable	
Blackmail and extortion		1	100.0%	2	100.0%	n.c.	
Intimidation, stalking and harassment		1,196	73.0%	1,351	71.7%	Up	13.0%
Other offences against the person		20	62.5%	26	57.8%	Stable	
Theft	Break and enter dwelling	834	86.7%	886	83.5%	Stable	
	Break and enter non-dwelling	325	52.1%	535	58.2%	Up	64.6%
	Receiving or handling stolen goods	212	55.6%	199	51.2%	Stable	
	Motor vehicle theft	810	78.0%	869	74.3%	Stable	
	Steal from motor vehicle	331	75.9%	250	72.0%	Stable	
	Steal from retail store	379	29.0%	614	32.8%	Up	62.0%
	Steal from dwelling	69	43.7%	62	42.8%	Stable	
	Steal from person	33	50.8%	54	66.7%	Stable	
	Stock theft	0		0		n.c.	
	Fraud	257	65.4%	314	68.7%	Up	22.2%
	Other theft	104	33.4%	116	33.4%	Stable	
Arson		32	42.1%	27	25.0%	Stable	
Malicious damage to property		502	34.4%	529	33.6%	Stable	
Drug offences	Possession and/or use of cocaine	6	35.3%	8	53.3%	n.c.	
	Possession and/or use of narcotics	1	100.0%	1	50.0%	n.c.	
	Possession and/or use of cannabis	171	16.3%	153	15.5%	Stable	
	Possession and/or use of amphetamines	15	62.5%	5	38.5%	n.c.	
	Possession and/or use of ecstasy	3	30.0%	4	40.0%	n.c.	
	Possession and/or use of other drugs	16	34.0%	7	18.9%	n.c.	
	Dealing, trafficking in cocaine	18	100.0%	14	100.0%	n.c.	
	Dealing, trafficking in narcotics	0		1	100.0%	n.c.	
	Dealing, trafficking in cannabis	32	84.2%	31	81.6%	Stable	
	Dealing, trafficking in amphetamines	2	100.0%	3	100.0%	n.c.	
	Dealing, trafficking in ecstasy	1	100.0%	4	80.0%	n.c.	
	Dealing, trafficking in other drugs	1	33.3%	0		n.c.	
	Cultivating cannabis	2	100.0%	2	50.0%	n.c.	
	Manufacture drug	0		0		n.c.	
	Importing drugs	0		0		n.c.	
	Other drug offences	5	6.4%	6	9.8%	n.c.	
Prohibited and regulated weapons offences		148	29.0%	129	24.2%	Stable	
Disorderly conduct	Trespass	157	12.4%	308	20.0%	Up	96.2%
	Offensive conduct	27	13.6%	23	8.7%	Stable	
	Offensive language	5	7.8%	6	9.1%	n.c.	
	Criminal intent	239	86.3%	235	83.6%	Stable	
Betting and gaming offences		0		0		n.c.	
Liquor offences		1	0.4%	0		n.c.	
Pornography offences		12	15.2%	12	16.2%	n.c.	
Prostitution offences		0		0		n.c.	
Against justice procedures	Escape custody	11	84.6%	10	100.0%	n.c.	
	Breach Apprehended Violence Order	484	99.6%	498	100.0%	Stable	
	Breach bail conditions	1,422	98.8%	1,694	98.7%	Up	19.1%
	Fail to appear	0		1	100.0%	n.c.	
	Resist or hinder officer	79	43.9%	89	46.8%	Stable	
	Other offences against justice procedures	7	77.8%	13	100.0%	n.c.	
Transport regulatory offences		23	0.1%	40	0.4%	Stable	
Other offences		154	6.0%	118	15.8%	Stable	

Figure 3.5: Offences with the largest change in the number of adults proceeded against to court by the NSW Police Force

Between the 12 months to September 2022 and the 12 months to September 2023

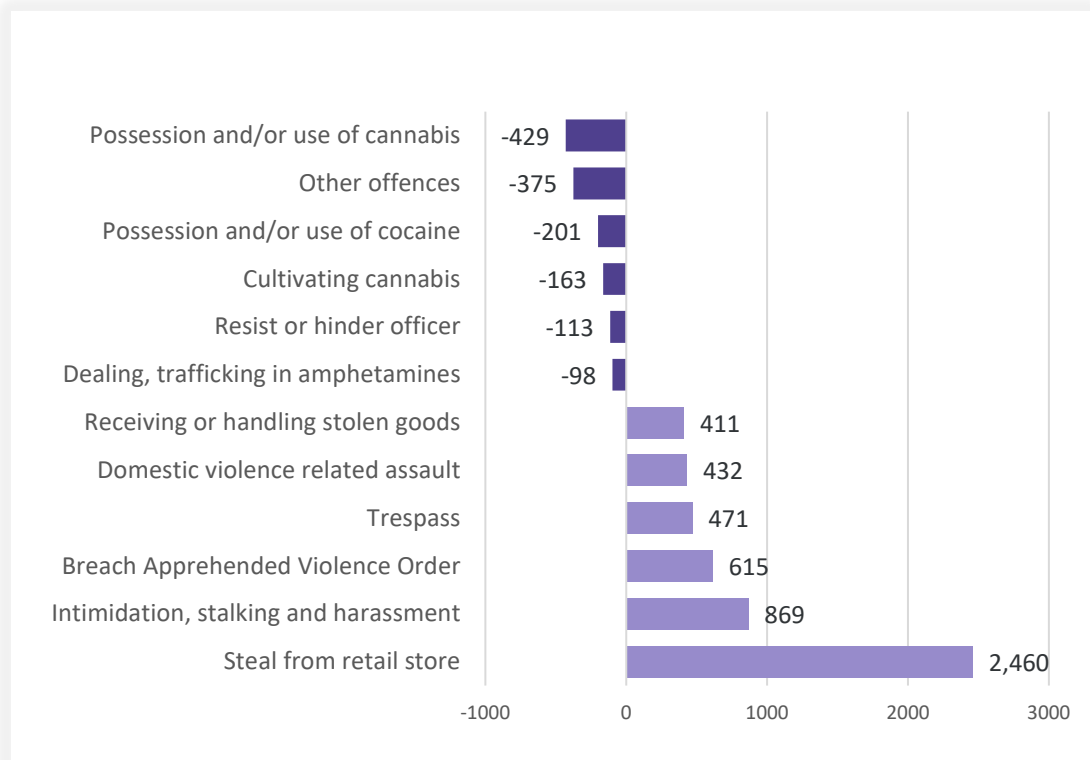
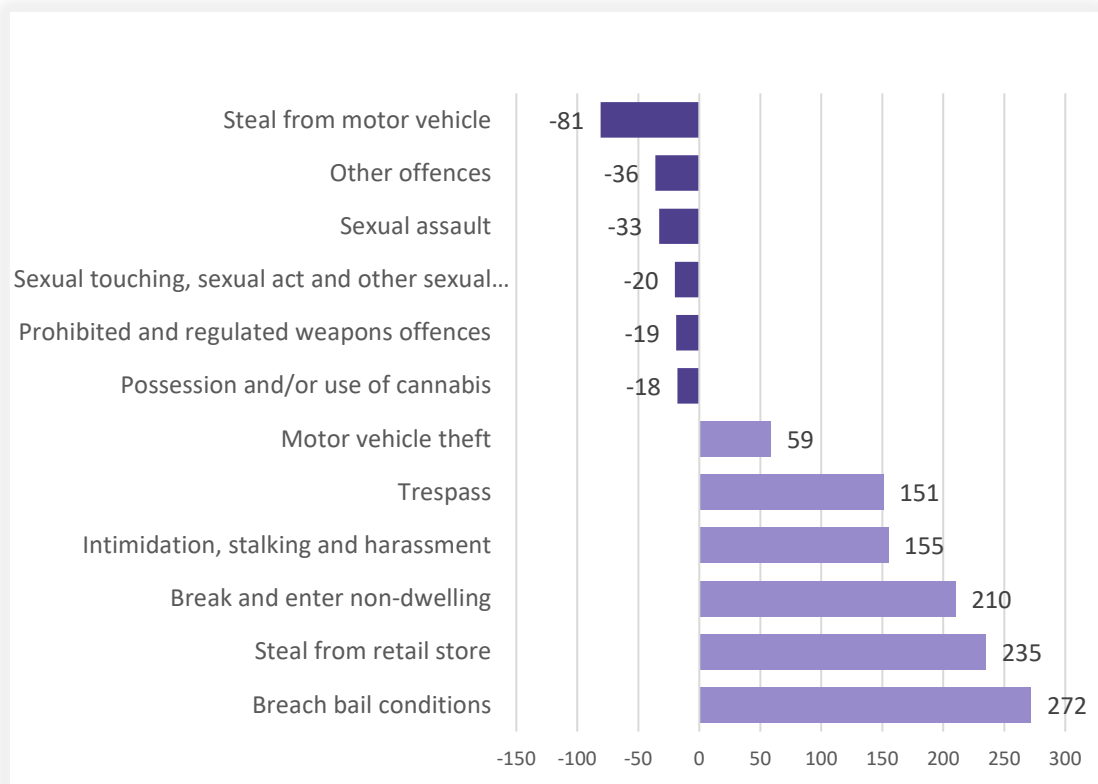


Figure 3.6: Offences with the largest change in the number of young people proceeded against to court by the NSW Police Force

Between the 12 months to September 2022 and the 12 months to September 2023



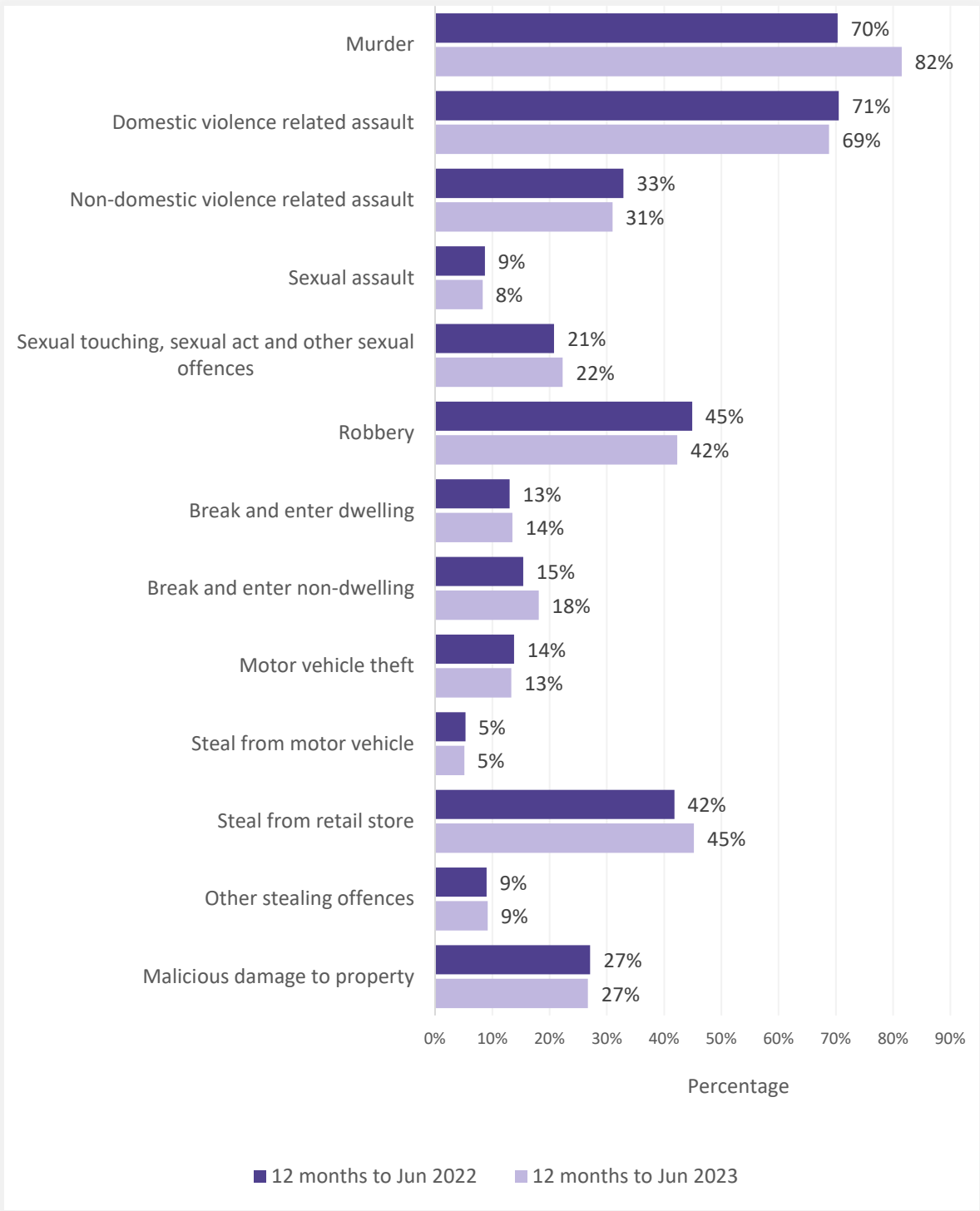
NSW Recorded Crime Statistics, September Quarter 2023

Table 3.7: Incidents of all 62 criminal offence types by whether legal proceedings commenced within 90 days of reporting
Over the two years to June 2023

		Recorded criminal incidents over the 12 months to June 2022			Recorded criminal incidents over the 12 months to June 2023		
Offence category		Proceedings commenced within 90 days	Total number recorded	% proceedings commenced within 90 days	Proceedings commenced within 90 days	Total number recorded	% proceedings commenced within 90 days
Homicide	Murder	45	64	70.3%	44	54	81.5%
	Attempted murder	12	14	85.7%	4	8	50.0%
	Murder accessory, conspiracy	0	1	0.0%	1	1	100.0%
	Manslaughter	2	5	40.0%	5	9	55.6%
Assault	Domestic violence related assault	22,508	31,944	70.5%	24,039	34,932	68.8%
	Non-domestic violence related assault	9,182	27,881	32.9%	10,152	32,720	31.0%
	Assault Police	2,391	2,676	89.3%	2,413	2,722	88.6%
Sexual offences	Sexual assault	632	7,255	8.7%	658	7,958	8.3%
	Sexual touching, sexual act and other sexual offences	1,490	7,165	20.8%	1,637	7,347	22.3%
Abduction and kidnapping		112	183	61.2%	124	232	53.4%
Robbery	Robbery without a weapon	335	797	42.0%	447	1,080	41.4%
	Robbery with a firearm	44	80	55.0%	52	109	47.7%
	Robbery with a weapon not a firearm	311	659	47.2%	328	764	42.9%
Blackmail and extortion		12	165	7.3%	14	1,713	0.8%
Intimidation, stalking and harassment		18,946	41,069	46.1%	20,766	45,081	46.1%
Other offences against the person		525	1,768	29.7%	489	1,571	31.1%
Theft	Break and enter dwelling	2,263	17,345	13.0%	2,575	19,117	13.5%
	Break and enter non-dwelling	1,083	7,020	15.4%	1,461	8,066	18.1%
	Receiving or handling stolen goods	5,724	7,449	76.8%	6,336	7,986	79.3%
	Motor vehicle theft	1,484	10,718	13.8%	1,759	13,205	13.3%
	Steal from motor vehicle	1,395	26,365	5.3%	1,432	28,176	5.1%
	Steal from retail store	7,218	17,274	41.8%	11,552	25,570	45.2%
	Steal from dwelling	1,049	15,558	6.7%	1,029	15,351	6.7%
	Steal from person	305	1,659	18.4%	367	2,072	17.7%
	Stock theft	9	277	3.2%	2	269	0.7%
	Fraud	3,244	44,359	7.3%	3,440	47,717	7.2%
	Other theft	1,696	16,507	10.3%	1,992	19,118	10.4%
Arson		184	3,460	5.3%	202	3,786	5.3%
Malicious damage to property		12,898	47,615	27.1%	13,025	48,719	26.7%
Drug offences	Possession and/or use of cocaine	1,686	2,303	73.2%	1,899	2,536	74.9%
	Possession and/or use of narcotics	771	1,263	61.0%	759	1,171	64.8%
	Possession and/or use of cannabis	11,857	15,711	75.5%	11,206	15,406	72.7%
	Possession and/or use of amphetamines	4,872	6,678	73.0%	4,621	6,380	72.4%
	Possession and/or use of ecstasy	472	616	76.6%	888	1,137	78.1%
	Possession and/or use of other drugs	2,928	6,151	47.6%	2,895	6,286	46.1%
	Dealing, trafficking in cocaine	841	1,090	77.2%	1,078	1,276	84.5%
	Dealing, trafficking in narcotics	401	454	88.3%	246	289	85.1%
	Dealing, trafficking in cannabis	600	762	78.7%	430	523	82.2%
	Dealing, trafficking in amphetamines	2,277	2,844	80.1%	1,466	1,845	79.5%
	Dealing, trafficking in ecstasy	127	154	82.5%	157	206	76.2%
	Dealing, trafficking in other drugs	322	486	66.3%	277	439	63.1%
	Cultivating cannabis	655	968	67.7%	467	686	68.1%
	Manufacture drug	35	57	61.4%	24	56	42.9%
	Importing drugs	67	177	37.9%	69	159	43.4%
	Other drug offences	1,042	5,397	19.3%	1,085	5,697	19.0%
Prohibited and regulated weapons offences		5,825	13,627	42.7%	5,750	13,404	42.9%
Disorderly conduct	Trespass	3,690	9,339	39.5%	4,879	11,671	41.8%
	Offensive conduct	2,393	3,597	66.5%	2,299	3,472	66.2%
	Offensive language	1,380	1,766	78.1%	1,095	1,417	77.3%
	Criminal intent	1,938	2,424	80.0%	2,203	2,750	80.1%
Betting and gaming offences		16	80	20.0%	24	114	21.1%
Liquor offences		2,951	9,110	32.4%	3,552	9,084	39.1%
Pornography offences		252	941	26.8%	270	1,078	25.0%
Prostitution offences		1	16	6.3%	4	26	15.4%
Against justice procedures	Escape custody	132	159	83.0%	114	137	83.2%
	Breach Apprehended Violence Order	17,977	21,843	82.3%	18,804	23,341	80.6%
	Breach bail conditions	18,280	52,089	35.1%	18,627	53,400	34.9%
	Fail to appear	14	909	1.5%	12	865	1.4%
	Resist or hinder officer	4,804	5,710	84.1%	4,624	5,532	83.6%
	Other offences against justice procedures	1,239	2,060	60.1%	1,486	2,621	56.7%
Transport regulatory offences		55,551	64,944	85.5%	48,862	71,887	68.0%
Other offences		24,054	89,752	26.8%	7,388	14,564	50.7%

Figure 3.8: Percentage of recorded criminal incidents for major offences by whether legal proceedings commenced within 90 days of reporting

Over the two years to June 2023



SECTION 4:

POLICING ACTIVITY

Table 4.1: Selected policing activities

Over the five years to September 2023

	Number of selected policing activities					2 Year Trend		5 Year Trend	
	12 months to September 2019	12 months to September 2020	12 months to September 2021	12 months to September 2022	12 months to September 2023	Number change	Annual percentage change	Number change	Annual average percentage change
Bail compliance checks	96,009	113,316	119,258	142,909	125,888	-17,021	-11.9%	29,879	7.0%
ADVO compliance checks events	41,723	55,408	71,345	117,194	111,011	-6,183	Stable	69,288	27.7%
Move-on directions	107,929	109,668	100,394	90,499	77,986	-12,513	-13.8%	-29,943	-7.8%
Searches	287,508	281,210	245,940	224,763	187,581	-37,182	-16.5%	-99,927	-10.1%
Vehicle searches	44,557	47,261	44,248	39,336	28,678	-10,658	-27.1%	-15,879	-10.4%
Person searches	238,255	230,279	199,386	183,370	156,358	-27,012	-14.7%	-81,897	-10.0%
Strip searches	4,696	3,670	2,306	2,057	2,545	488	Stable	-2,151	-14.2%
Convey/detain person to mental health facility	16,123	17,392	18,899	20,283	20,714	431	Stable	4,591	6.5%

NSW Recorded Crime Statistics, September Quarter 2023

Table 4.2: Non-criminal domestic episodes by Statistical Area (SA4)
Over the five years to September 2023

Statistical Area	Number of activities					Trend and average annual percentage change	
	12 months to September 2019	12 months to September 2020	12 months to September 2021	12 months to September 2022	12 months to September 2023	2 Year Trend	5 Year Trend
						Percentage change	Annual average percentage change
Greater Sydney	46,611	49,859	46,140	43,223	43,667	Stable	-1.6%
Baulkham Hills and Hawkesbury	1,132	1,203	1,163	1,077	1,129	Stable	Stable
Blacktown	5,196	5,482	5,365	5,082	5,078	Stable	Stable
Central Coast	4,505	5,095	4,637	4,475	4,381	Stable	Stable
City and Inner South	3,484	3,600	3,471	3,407	3,328	Stable	-1.1%
Eastern Suburbs	1,856	2,036	1,974	1,933	1,796	Stable	Stable
Inner South West	5,128	5,470	4,948	4,541	4,551	Stable	-2.9%
Inner West	2,021	2,208	1,922	1,852	1,973	Stable	Stable
North Sydney and Hornsby	1,590	1,880	1,815	1,695	1,731	Stable	Stable
Northern Beaches	1,624	1,711	1,447	1,308	1,360	Stable	-4.3%
Outer South West	3,536	3,734	3,448	3,119	3,232	Stable	-2.2%
Outer West and Blue Mountains	4,744	4,985	4,582	4,111	4,410	Stable	-1.8%
Parramatta	4,125	4,659	4,057	4,159	4,064	Stable	Stable
Ryde	1,098	1,194	1,162	1,036	1,083	Stable	Stable
South West	4,776	4,717	4,403	4,008	4,032	Stable	-4.1%
Sutherland	1,796	1,885	1,746	1,420	1,519	Stable	-4.1%
Regional NSW	37,265	39,772	39,750	37,461	40,065	Stable	Stable
Capital Region	2,460	2,785	2,893	2,683	2,666	Stable	Stable
Central West	3,023	3,340	3,254	3,168	3,209	Stable	Stable
Coffs Harbour - Grafton	1,919	1,979	1,936	2,019	2,260	Stable	4.2%
Far West and Orana	3,620	3,724	3,833	3,653	4,010	Stable	Stable
Hunter Valley excluding Newcastle	2,790	2,983	3,220	3,102	3,479	Stable	5.7%
Illawarra	3,616	3,768	3,676	3,600	3,723	Stable	Stable
Mid North Coast	3,222	3,421	3,293	2,875	3,013	Stable	-1.7%
Murray	1,863	2,020	2,056	1,853	1,999	Stable	Stable
New England and North West	3,780	3,856	3,767	3,749	3,742	Stable	Stable
Newcastle and Lake Macquarie	3,612	4,296	4,360	3,922	4,431	Stable	5.2%
Richmond - Tweed	2,728	2,847	2,896	2,792	3,016	Stable	Stable
Riverina	2,805	2,887	2,735	2,316	2,469	Stable	-3.1%
Southern Highlands and Shoalhaven	1,827	1,866	1,831	1,729	2,048	Stable	Stable
NSW	83,888	89,643	85,898	80,700	83,752	Stable	Stable

Table 4.3: Ratio to NSW rate of non-criminal domestic episodes per 100,000 population by Statistical Area (SA4)
Over the five years to September 2023

Statistical Area	12 months to September 2019	12 months to September 2020	12 months to September 2021	12 months to September 2022	12 months to September 2023
Greater Sydney	0.8	0.9	0.8	0.8	0.8
Baulkham Hills and Hawkesbury	0.4	0.4	0.4	0.4	0.4
Blacktown	1.3	1.3	1.3	1.3	1.2
Central Coast	1.3	1.3	1.3	1.3	1.2
City and Inner South	0.9	0.9	1.0	1.0	1.0
Eastern Suburbs	0.6	0.7	0.7	0.7	0.7
Inner South West	0.8	0.8	0.8	0.8	0.7
Inner West	0.6	0.6	0.6	0.6	0.6
North Sydney and Hornsby	0.3	0.4	0.4	0.4	0.4
Northern Beaches	0.6	0.6	0.5	0.5	0.5
Outer South West	1.2	1.1	1.1	1.0	1.0
Outer West and Blue Mountains	1.4	1.4	1.3	1.2	1.3
Parramatta	0.8	0.8	0.8	0.8	0.8
Ryde	0.5	0.5	0.5	0.5	0.5
South West	1.0	0.9	0.9	0.8	0.8
Sutherland	0.8	0.7	0.7	0.6	0.6
Regional NSW	1.3	1.3	1.3	1.3	1.4
Capital Region	1.0	1.1	1.1	1.1	1.1
Central West	1.4	1.4	1.4	1.5	1.5
Coffs Harbour - Grafton	1.3	1.2	1.2	1.4	1.5
Far West and Orana	3.0	2.9	3.1	3.1	3.3
Hunter Valley excluding Newcastle	1.0	0.9	1.0	1.1	1.1
Illawarra	1.1	1.1	1.1	1.1	1.1
Mid North Coast	1.4	1.4	1.4	1.3	1.3
Murray	1.5	1.5	1.6	1.5	1.6
New England and North West	1.9	1.9	1.9	2.0	1.9
Newcastle and Lake Macquarie	0.9	1.0	1.1	1.0	1.1
Richmond - Tweed	1.0	1.0	1.1	1.1	1.1
Riverina	1.7	1.6	1.6	1.4	1.5
Southern Highlands and Shoalhaven	1.1	1.1	1.1	1.1	1.2
NSW	1.0	1.0	1.0	1.0	1.0

APPENDIX 1

REGIONAL

COMPARISONS

Local Government Areas

Appendix Table 1.1: Trends in recorded criminal incidents for major offences, NSW LGAs
Over the two years to September 2023

NSW LGA	Murder	Domestic violence related assault	Non-domestic violence related assault	Sexual assault	Sexual touching, sexual act and other sexual offences	Robbery	Break and enter dwelling	Break and enter non-dwelling	Motor vehicle theft	Steal from motor vehicle	Steal from retail store	Other stealing offences	Malicious damage to property
Albury	ns	ns	ns	ns			ns	ns	ns	ns	28.6	ns	ns
Armidale Regional	ns	ns	ns	ns			55.1	ns	83.3	ns	ns	ns	ns
Ballina	ns	ns	ns	ns			ns	ns	59.1	ns	ns	ns	ns
Balranald													
Bathurst Regional	ns	ns	ns	ns			ns	ns	ns	ns	ns	ns	-12.6
Bayside	ns	ns	ns	ns			ns	ns	ns	ns	21.7	ns	ns
Bega Valley	ns	ns	ns	ns			ns	ns	ns	ns	ns	ns	ns
Bellingen	ns	ns	ns				ns			ns		ns	43.0
Berrigan	ns	ns										ns	ns
Blacktown	ns	ns	ns	ns		ns	ns	ns	29.2	ns	28.7	ns	ns
Bland	ns											ns	ns
Blayney	ns											ns	ns
Blue Mountains	ns	ns	ns	ns			ns	ns	ns	ns	51.6	ns	ns
Bogan	ns							ns		ns		ns	ns
Bourke	53.2	ns					ns	ns	ns	ns		ns	ns
Brewarrina	ns	ns					ns						ns
Broken Hill	ns	ns			ns		ns	ns	ns	ns	67.2	ns	ns
Burwood	ns	30.0	ns	ns			ns	ns	ns	ns	ns	ns	ns
Byron	ns	ns	ns	ns			ns	ns	ns	ns	ns	ns	-19.0
Cabonne	ns	ns					ns					ns	-54.4
Camden	ns	38.3	ns	ns			ns	103.4	59.7	ns	ns	ns	15.0
Campbelltown	ns	ns	ns	ns		ns	ns	ns	24.5	ns	39.1	ns	ns
Canada Bay	ns	43.1	ns	ns			ns	ns	ns	-20.6	ns	ns	ns
Canterbury-Bankstown	ns	21.0	ns	ns		ns	9.4	ns	ns	ns	23.9	12.4	ns
Carrathool													ns
Central Coast	ns	ns	ns	ns		ns	13.6	ns	24.7	ns	35.7	ns	ns
Central Darling	ns	ns						ns					ns
Cessnock	40.3	ns	ns	ns			ns	94.3	ns	ns	ns	ns	ns
Clarence Valley	37.3	ns	ns	ns			-24.2	ns	25.9	-23.5	ns	ns	ns
Cobar	ns	ns										ns	ns
Coffs Harbour	ns	ns	ns	ns		ns	ns	ns	ns	ns	71.4	ns	ns
Coolamon													
Coonamble	ns	ns					ns			ns		ns	ns
Cootamundra-Gundagai	ns	ns										ns	ns
Cowra	ns	ns					ns		ns	ns	124.1	-28.7	ns
Cumberland	ns	ns	ns	ns		ns	12.6	ns	ns	20.2	ns	21.0	ns
Dubbo Regional	ns	30.3	ns	ns		ns	ns	ns	ns	ns	25.6	ns	29.7
Dungog	ns	ns										ns	ns
Edward River	ns	ns					ns					ns	ns
Eurobodalla	ns	ns	ns	ns			60.9	-41.2	50.0	ns	ns	ns	ns
Fairfield	ns	ns	ns	ns		ns	ns	37.1	18.8	ns	51.4	ns	ns
Federation	ns	ns								ns		ns	ns
Forbes	ns	ns					ns		ns	393.2		ns	ns

NSW LGA	Murder	Domestic violence related assault	Non-domestic violence related assault	Sexual assault	Sexual touching, sexual act and other sexual offences	Robbery	Break and enter dwelling	Break and enter non-dwelling	Motor vehicle theft	Steal from motor vehicle	Steal from retail store	Other stealing offences	Malicious damage to property
Georges River		ns	ns	ns	ns	ns	ns	ns	ns	-37.7	119.1	ns	ns
Gilgandra		ns	ns				ns					ns	ns
Glen Innes Severn		48.1	ns	ns			ns	ns			ns	-24.1	ns
Goulburn Mulwaree		58.3	ns	ns	ns		-22.8	ns	ns	ns	ns	ns	ns
Greater Hume Shire		ns	ns						ns	ns		ns	ns
Griffith		ns	ns	ns	ns		ns	ns	ns	ns	36.2	ns	ns
Gunnedah		ns	ns	ns			ns		ns	ns	ns	ns	ns
Gwydir												ns	
Hawkesbury		ns	ns	ns	ns		ns	ns	ns	ns	ns	ns	ns
Hay		ns											
Hilltops		ns	ns				ns			ns	ns	ns	ns
Hornsby		ns	23.6	ns	ns		62.2	ns	74.4	28.5	ns	ns	ns
Hunters Hill							ns			ns		ns	ns
Inner West		ns	13.2	ns	ns	ns	ns	ns	ns	ns	10.7	ns	ns
Inverell		ns	ns	ns			ns	ns	ns	-18.6	ns	ns	ns
Junee			ns										ns
Kempsey		ns	20.6	ns	ns		ns	54.4	71.2	ns	ns	ns	ns
Kiama		ns	ns							ns		ns	ns
Ku-ring-gai		ns	ns	ns	ns		ns	ns	ns	ns	ns	ns	ns
Kyogle		ns	ns				ns					ns	ns
Lachlan		ns	ns				ns	ns	ns	ns		ns	ns
Lake Macquarie		ns	ns	ns	ns	53.8	ns	ns	25.4	ns	68.6	ns	ns
Lane Cove		ns	ns				ns		ns	ns	ns	ns	ns
Leeton		ns	ns				85.4		ns			ns	ns
Lismore		ns	ns	ns	ns		ns	ns	ns	ns	330.6	ns	ns
Lithgow		34.5	ns	ns	ns		100.0	ns	168.2	64.2	ns	27.3	ns
Liverpool		ns	25.1	ns	ns	ns	ns	38.1	43.3	ns	ns	27.7	ns
Liverpool Plains		ns	ns									ns	ns
Lockhart													
Lord Howe Island													
Maitland		21.8	ns	ns	ns	ns	ns	ns	ns	ns	40.5	-8.7	ns
Mid-Coast		ns	ns	ns	ns		ns	-33.5	47.3	ns	56.0	-21.0	-5.8
Mid-Western Regional		ns	ns	ns	ns		ns		75.0	ns	ns	ns	ns
Moree Plains		ns	ns	ns	ns		38.1	ns	107.1	ns	ns	ns	-13.7
Mosman		ns	ns		ns		ns			ns	ns	ns	ns
Murray River		ns	ns					ns	ns	57.7		ns	-42.5
Murrumbidgee													-43.2
Muswellbrook		48.5	ns	ns	ns		ns	ns	ns	ns	ns	ns	ns
Nambucca Valley		ns	ns		ns		ns	ns	77.1	ns	ns	ns	-24.7
Narrabri		ns	ns				38.7	ns	ns	55.7		ns	ns
Narrandera		ns	ns				ns	ns		ns		ns	ns
Narromine		ns	ns				ns	ns	ns	ns		ns	19.7
Newcastle		ns	ns	33.6	ns	ns	ns	ns	ns	ns	24.5	ns	-6.6
North Sydney		ns	ns	ns	ns		ns	ns	ns	ns	ns	ns	ns
Northern Beaches		ns	ns	ns	-16.9	ns	ns	75.0	ns	ns	35.4	40.1	ns

NSW LGA	Murder	Domestic violence related assault	Non-domestic violence related assault	Sexual assault	Sexual touching, sexual act and other sexual offences	Robbery	Break and enter dwelling	Break and enter non-dwelling	Motor vehicle theft	Steal from motor vehicle	Steal from retail store	Other stealing offences	Malicious damage to property
Oberon												ns	
Orange		ns	ns	ns	ns		ns	ns	ns	ns	ns	-20.1	ns
Parkes		ns	46.7				64.1	ns	ns	ns	ns	ns	ns
Parramatta		ns	24.5	ns	ns	53.3	ns	ns	53.1	ns	72.6	ns	ns
Penrith		ns	ns	ns	ns	ns	ns	ns	31.0	19.2	24.8	20.6	ns
Port Macquarie-Hastings		ns	ns	ns	-29.0		ns	ns	ns	ns	ns	ns	ns
Port Stephens		ns	ns	ns	-25.8		48.6	ns	ns	ns	36.7	ns	ns
Queanbeyan-Palerang Regional		ns	ns	ns	ns		ns	ns	-27.4	-45.5	ns	ns	ns
Randwick		ns	ns	ns	ns		24.5	73.5	53.3	ns	38.6	41.1	ns
Richmond Valley		ns	ns	ns	ns		ns	ns	ns	ns	ns	ns	-25.1
Ryde		ns	ns	ns	ns		ns	ns	ns	ns	59.1	ns	ns
Shellharbour		ns	ns	ns	ns		ns	ns	ns	ns	33.5	ns	ns
Shoalhaven		ns	ns	ns	ns		ns	ns	41.9	ns	76.9	ns	ns
Singleton		ns	ns	ns	ns		ns	ns	ns	ns	ns	ns	-23.8
Snowy Monaro Regional		ns	ns				ns	ns		ns		ns	ns
Snowy Valleys		ns	ns	ns						ns		ns	ns
Strathfield		ns	38.0	ns			ns	ns	69.0	ns	ns	28.6	ns
Sutherland Shire		ns	ns	ns	ns	ns	ns	ns	ns	ns	48.6	ns	-9.4
Sydney		ns	ns	ns	ns	45.5	16.3	ns	27.0	ns	31.0	23.5	ns
Tamworth Regional		ns	ns	ns	ns	ns	ns	ns	ns	ns	47.4	19.5	-10.0
Temora			ns									ns	ns
Tenterfield		ns	ns				ns					ns	ns
The Hills Shire		ns	ns	ns	ns		ns	50.7	33.0	ns	37.8	ns	ns
Tweed		-14.6	ns	ns	ns	ns	ns	ns	33.0	ns	169.3	ns	ns
Unincorporated Far West													
Upper Hunter Shire		ns	ns				ns			ns		ns	-36.7
Upper Lachlan Shire												ns	ns
Uralla													ns
Wagga Wagga		ns	ns	ns	ns		ns	ns	ns	-31.6	ns	ns	ns
Walcha													
Walgett		33.8	ns				ns	ns	ns	ns		ns	ns
Warren		ns					ns		ns	-43.2		ns	ns
Warrumbungle Shire		ns	ns				ns			ns	ns	ns	67.2
Waverley		ns	ns	ns	ns		ns	ns	ns	ns	32.0	43.6	ns
Weddin													
Wentworth		ns	ns					ns		ns		ns	ns
Willoughby		ns	ns	ns	ns		ns	ns	52.9	ns	ns	ns	ns
Wingecarribee		ns	ns	ns	ns		ns		123.8	ns	129.2	ns	ns
Wollondilly		ns	ns	ns	ns		ns		ns	ns		ns	ns
Wollongong		ns	ns	ns	ns	ns	ns	ns	ns	ns	46.1	ns	ns
Woollahra		ns	ns	ns	ns		ns		ns	ns	ns	ns	ns
Yass Valley		ns	76.0						ns	ns		ns	ns
NSW	ns	ns	11.2	ns	ns	18.3	8.1	15.2	18.8	5.0	36.1	9.3	ns

Appendix Table 1.2: Ratio to NSW rate of recorded criminal incidents per 100,000 population for major offences, NSW LGAs
12 months to September 2023

NSW LGA	Murder	Domestic violence related assault	Non-domestic violence related assault	Sexual assault	Sexual touching, sexual act and other sexual	Robbery	Break and enter dwelling	Break and enter non-dwelling	Motor vehicle theft	Steal from motor vehicle	Steal from retail store	Other stealing offences	Malicious damage to property
Albury	5.0	1.7	1.8	2.0	1.2	1.5	1.7	2.7	1.8	2.8	1.5	1.6	2.1
Armidale Regional		1.7	2.1	2.1	2.5	1.8	4.2	2.1	2.0	2.4	1.3	1.8	2.3
Ballina	6.0	0.6	0.8	1.0	0.8	1.1	1.0	1.4	1.3	1.2	0.6	1.0	0.9
Balranald													
Bathurst Regional		1.7	1.4	1.5	1.7	1.1	1.5	1.3	1.1	1.1	1.0	1.0	1.5
Bayside	1.6	0.9	0.6	0.4	0.6	0.4	0.5	0.3	0.6	0.6	0.9	0.9	0.8
Bega Valley		0.6	0.6	0.7	1.0	0.5	0.3	1.0	0.4	0.3	0.4	0.8	0.9
Bellingen		1.2	1.2	2.1	1.0	0.3	1.1	1.2	0.7	0.8	0.2	1.1	1.5
Berrigan		1.8	0.9	0.9	0.4	0.5	1.0	1.6	1.0	0.7	0.1	0.5	1.2
Blacktown	1.0	1.2	1.0	0.8	1.0	1.8	1.0	0.6	1.1	1.1	1.2	1.0	1.0
Bland		1.8	1.4	0.7	1.0	0.7	1.5	3.0	0.7	0.8	0.1	1.0	1.4
Blayney		1.1	0.7	0.7	1.3		1.0	2.5	1.0	0.9	0.3	0.8	1.2
Blue Mountains		0.7	0.7	1.1	1.1	0.3	0.5	0.7	0.4	0.5	0.5	0.5	1.0
Bogan													
Bourke													
Brewarrina													
Broken Hill		4.2	2.3	1.4	2.2	0.5	3.6	3.1	2.8	1.9	1.6	1.9	3.0
Burwood		0.7	0.9	0.6	0.6	1.4	0.8	1.0	0.4	0.9	2.2	1.3	0.7
Byron		0.7	1.5	1.3	1.7	0.3	0.7	1.0	1.3	1.0	0.4	1.3	1.0
Cabonne	10.1	0.6	0.4	1.1	0.5		0.6	1.9	0.6	0.3	0.1	0.6	0.4
Camden		0.6	0.5	0.5	0.7	0.2	0.3	0.5	0.6	0.6	0.4	0.4	0.5
Campbelltown	1.6	1.3	1.1	1.3	1.2	1.0	0.7	0.7	1.0	0.9	1.4	0.8	1.1
Canada Bay		0.5	0.5	0.5	0.5	0.2	0.7	1.5	0.5	0.5	0.5	0.7	0.5
Canterbury-Bankstown	1.9	1.0	0.7	0.7	0.6	0.9	0.6	0.5	0.8	0.8	0.5	0.6	0.7
Carrathool													
Central Coast	0.8	1.2	1.0	1.2	1.3	0.8	0.7	0.8	0.9	1.0	1.0	0.8	1.1
Central Darling													
Cessnock	4.4	1.6	1.2	1.8	1.1	1.1	1.2	2.6	2.6	1.4	0.9	1.7	1.7
Clarence Valley	2.6	1.4	1.3	1.6	1.4	1.6	1.1	2.5	1.9	1.1	0.6	1.4	1.4
Cobar		2.0	1.6	1.5	0.8		2.4	3.3	2.4	1.4	0.2	2.0	2.7
Coffs Harbour	1.8	2.1	1.6	1.9	1.8	2.0	1.4	1.3	1.5	1.4	1.4	1.2	1.5
Coolamon		0.4	0.3	1.2	1.0		0.3	0.9	0.3	0.1	0.1	0.2	0.4
Coonamble		4.3	2.3	1.9	2.9		8.8	11.4	5.3	2.7	0.6	2.7	4.3
Cootamundra-Gundagai		1.4	0.9	1.4	1.4		0.5	1.0	0.4	0.4	0.2	0.9	1.0
Cowra		1.5	1.5	1.8	1.6	0.3	3.9	1.4	1.8	1.3	1.5	1.0	1.8
Cumberland	1.8	0.9	0.8	0.6	0.7	1.4	1.0	0.7	1.0	1.2	0.5	0.9	0.7
Dubbo Regional	2.5	2.5	2.4	1.5	1.8	2.3	4.3	4.9	3.2	2.8	2.1	1.9	3.1
Dungog		0.8	0.6	1.2	1.1		0.7	1.1	0.6	0.1	0.2	1.0	0.7
Edward River		1.6	1.8	1.6	2.4		1.7	1.7	0.6	1.1	0.4	1.7	2.1
Eurobodalla		1.5	1.4	1.2	1.1	0.2	1.4	1.2	1.2	1.1	1.2	1.1	1.4
Fairfield		1.0	0.6	0.7	0.8	1.2	0.5	0.4	0.8	0.8	0.8	0.6	0.7
Federation		0.7	0.8	0.9	0.9	0.3	0.5	1.5	0.7	0.6	0.2	1.0	0.9
Forbes		1.6	2.0	0.6	1.1	0.4	3.0	3.2	2.3	6.5	0.9	1.7	2.4
Georges River	0.9	0.7	0.5	0.5	0.4	0.5	0.4	0.4	0.4	0.4	1.0	0.5	0.5

NSW Recorded Crime Statistics, September Quarter 2023

NSW LGA	Murder	Domestic violence related assault	Non-domestic violence related assault	Sexual assault	Sexual touching, sexual act and other sexual	Robbery	Break and enter dwelling	Break and enter non-dwelling	Motor vehicle theft	Steal from motor vehicle	Steal from retail store	Other stealing offences	Malicious damage to property
Gilgandra		2.1	1.2	1.2	3.1	0.9	2.2	2.0	0.8	1.3	0.5	1.9	1.6
Glen Innes Severn		2.1	1.9	2.5	1.6	0.9	2	3.1	1.2	0.6	0.8	1.6	2.8
Goulburn Mulwaree		1.5	1.4	1.3	1.4	1.0	0.8	1.2	0.8	0.7	1.2	1.3	1.4
Greater Hume Shire		0.8	0.5	1.6	0.9		0.5	1.3	1.2	0.7	0.1	0.8	0.5
Griffith		1.8	1.2	1.3	1.7	1.2	1.6	1.9	1.3	1.4	1.6	1.1	1.9
Gunnedah		1.9	1.5	1.6	1.5	1.2	4.3	1.3	4.0	1.9	0.7	1.3	2.2
Gwydir		0.6	0.6	0.6	1.1		1.8	2.4	2.0	0.9	0.1	1.0	0.6
Hawkesbury		1.0	0.8	1.1	1.0	0.2	0.6	0.5	0.6	0.7	0.7	0.6	0.8
Hay													
Hilltops		1.8	1.2	0.8	1.5	0.2	0.9	0.7	0.5	0.6	0.4	0.9	1.2
Hornsby	1.8	0.4	0.3	0.4	0.5	0.2	0.3	0.4	0.3	0.4	0.6	0.3	0.4
Hunters Hill		0.2	0.2	0.5	0.7	0.6	0.9	0.9	0.9	0.7	0.1	0.6	0.4
Inner West	0.8	0.7	0.8	0.9	0.9	0.9	0.7	0.7	0.7	0.8	0.8	1.0	0.9
Inverell		2.5	2.0	1.9	1.2	1.6	2.5	2.1	2.6	1.2	0.9	1.2	2.2
Junee		0.6	1.0	1.9	2.1	0.6	1.0	0.5	0.9	0.3	0.1	0.6	0.6
Kempsey	4.5	2.6	1.7	1.2	1.5	2.9	4.5	2.8	3.8	1.9	1.5	2.0	2.3
Kiama		0.3	0.3	0.4	1.1	0.9	0.4	0.5	0.8	0.9	0.1	0.4	0.4
Ku-ring-gai		0.2	0.2	0.4	0.4	0.3	0.4	0.3	0.2	0.3	0.1	0.3	0.2
Kyogle		0.8	0.7	1.2	1.2		1.4	2.0	1.6	1.0	0.3	0.5	0.8
Lachlan		2.3	1.5	2.1	1.5	1.3	4.1	7.2	2.9	1.8	0.3	2.3	2.5
Lake Macquarie		0.9	0.8	1.1	0.9	0.8	0.9	1.0	1.3	1.1	1.1	0.8	1.0
Lane Cove		0.3	0.3	0.3	0.4	0.3	0.8	0.5	0.3	0.4	0.3	0.5	0.3
Leeton		1.9	1.4	1.6	1.9	1.1	2.7	2.6	1.8	1.1	0.5	1.5	2.3
Lismore	3.1	1.2	1.4	2.0	1.4	2.1	1.6	2.6	1.6	1.3	1.4	1.1	1.4
Lithgow		2.1	2.0	1.3	1.7	1.4	1.8	0.9	1.7	1.5	0.9	2.3	1.8
Liverpool	1.8	1.2	1.0	0.8	0.9	1.3	0.9	0.7	1.1	1.2	0.8	1.0	0.9
Liverpool Plains		1.9	1.0	2.0	1.6	0.5	0.9	1.4	1.2	0.7	0.1	0.7	1.3
Lockhart		0.6	0.7	0.9			1.4	2.3	1.6	0.6		0.8	1.5
Lord Howe Island													
Maitland		1.7	1.1	1.5	1.4	1.1	1.2	1.5	1.5	1.4	1.3	1.2	1.4
Mid-Coast	2.9	1.4	1.2	1.3	1.7	0.8	1.8	1.7	1.6	1.0	1.0	1.3	1.4
Mid-Western Regional		1.3	0.9	1.5	1.4	0.3	0.7	1.1	1.0	0.4	0.6	0.9	1.4
Moree Plains		4.7	3.7	3.4	1.9	7.2	9.4	7.2	7.8	4.0	4.1	2.8	4.7
Mosman		0.2	0.2	0.4	0.8	0.6	0.4	0.1	0.3	0.4	0.4	0.7	0.4
Murray River		0.7	0.5	0.9	0.7	0.3	1.7	3.3	1.6	0.9	0.2	1.4	0.6
Murrumbidgee		1.3	1.0	1.7	1.3		1.5	0.5	1.5	0.4	0.3	1.0	1.0
Muswellbrook		2.7	1.9	2.5	2.1	1.2	2.0	2.1	2.0	1.6	1.6	2.3	2.2
Nambucca Valley		1.7	1.3	1.1	1.8	0.2	1.4	1.9	1.8	1.2	1.0	1.1	1.6
Narrabri	10.9	1.9	1.4	1.6	0.9	0.9	4.1	1.7	2.4	2.4	0.9	1.3	1.9
Narrandera		2.6	1.5	1.9	1.8	0.7	1.9	4.6	1.3	1.2	0.9	1.7	2.4
Narromine		2.6	1.6	2.2	1.4		3.0	5.3	3.2	2.1	0.8	2.1	2.2
Newcastle	0.8	1.1	1.5	1.8	1.2	2.3	2.4	1.8	2.2	3.3	1.7	1.7	1.6
North Sydney		0.3	0.6	0.5	0.7	0.5	0.6	0.4	0.3	0.5	0.6	0.7	0.6
Northern Beaches		0.2	0.5	0.5	0.5	0.5	0.3	0.4	0.4	0.4	0.8	0.6	0.5
Oberon	25.1	0.8	0.4	0.9	2.4		1.0	0.5	0.6	0.2	0.4	0.8	0.5
Orange		1.6	1.7	1.8	1.3	2.0	3.6	1.8	2.5	2.0	1.4	1.1	2.1

NSW Recorded Crime Statistics, September Quarter 2023

NSW LGA	Murder	Domestic violence related assault	Non-domestic violence related assault	Sexual assault	Sexual touching, sexual act and other sexual	Robbery	Break and enter dwelling	Break and enter non-dwelling	Motor vehicle theft	Steal from motor vehicle	Steal from retail store	Other stealing offences	Malicious damage to property
Parkes	9.7	2.2	2.2	1.6	1.5	2.2	1.8	2.2	1.5	1.6	0.9	1.8	2.0
Parramatta		0.7	0.9	0.6	0.9	1.4	1.1	0.8	1.1	1.2	1.4	1.2	0.7
Penrith	2.5	1.2	1.3	1.0	1.1	1.3	1.2	1.1	1.3	1.5	1.3	1.1	1.2
Port Macquarie-Hastings		1.2	1.0	1.0	1.0	0.6	0.7	0.9	0.8	0.7	0.6	1.1	1.2
Port Stephens		1.3	1.2	1.2	1.0	0.9	0.9	1.8	1.1	0.8	0.7	0.9	1.5
Queanbeyan-Palerang Regional		0.8	0.8	0.8	0.9	0.7	0.7	0.9	0.8	0.8	0.6	0.8	0.9
Randwick		0.7	1.0	0.9	0.8	0.8	0.8	0.4	0.7	0.8	0.6	1.2	0.8
Richmond Valley		1.5	1.4	2.1	1.9	1.7	2.6	2.6	2.5	1.5	0.7	1.3	1.6
Ryde		0.4	0.4	0.4	0.4	0.4	0.7	0.4	0.5	0.6	0.8	0.7	0.4
Shellharbour	1.8	0.8	0.7	1.0	1.2	0.6	0.5	0.6	0.7	0.9	1.2	0.7	1.0
Shoalhaven	2.6	1.0	1.0	1.3	1.1	0.7	1.0	1.6	1.0	0.9	1.1	0.9	1.5
Singleton		0.9	1.1	1.1	1.5		0.9	2.4	1.4	0.9	0.6	1.0	1.3
Snowy Monaro Regional		0.8	0.8	0.7	0.8	0.4	0.5	1.1	0.2	0.4	0.1	0.9	1.0
Snowy Valleys		1.0	1.1	2.5	0.9	0.3	0.7	2.3	0.3	0.4	0.4	0.8	1.1
Strathfield	3.0	0.8	0.7	0.6	1.1	0.9	1.2	0.8	0.9	1.1	0.9	1.2	0.5
Sutherland Shire		0.6	0.4	0.5	0.6	0.5	0.4	0.2	0.3	0.4	0.6	0.5	0.6
Sydney	1.3	1.3	3.2	1.8	2.0	3.4	1.1	1.6	0.8	1.0	3.8	4.1	1.6
Tamworth Regional	2.2	1.6	1.5	1.9	1.7	2.0	3.6	1.8	2.1	2.0	1.3	1.3	1.9
Temora		1.1	1.1	0.7	1.1	1.3	1.7	2.4	0.1	0.6	0.6	1.2	0.9
Tenterfield		2.1	1.4	2.1	1.7	0.6	1.6	1.9	1.0	0.6	0.5	1.3	2.1
The Hills Shire		0.4	0.4	0.4	0.5	0.6	0.5	0.5	0.4	0.4	0.6	0.5	0.4
Tweed		0.8	0.9	0.8	1.0	0.9	0.9	1.3	1.5	1.0	0.9	1.0	1.0
Unincorporated Far West													
Upper Hunter Shire		0.9	0.8	1.1	1.3	0.9	0.7	1.2	0.8	0.6	0.3	0.8	0.7
Upper Lachlan Shire		0.6	0.4	0.8	0.5		0.5	0.8	0.4	0.2		1.0	0.8
Uralla		0.6	0.9	1.7	0.9	0.7	0.8	1.1	0.8	0.4	0.0	0.7	0.8
Wagga Wagga		1.7	1.6	1.6	1.4	0.6	2.4	1.5	1.2	1.7	1.4	1.4	1.8
Walcha		2.0	1.9	3.4	3.0		1.1	1.6	0.2	0.4		0.6	1.0
Walgett		7.8	3.4	2.9	3.0		2.7	5.0	2.5	3.0	0.9	2.2	4.3
Warren													
Warrumbungle Shire		2.2	1.6	0.9	1.8		2.2	4.0	0.8	1.0	0.8	2.0	1.8
Waverley	4.0	0.7	1.0	0.9	1.0	0.5	0.5	0.4	1.0	0.5	3.4	1.3	0.7
Weddin		0.2	0.3	0.6	0.6		0.6	1.1	0.5	0.4	0.5	0.7	0.5
Wentworth		2.2	1.3	0.8	1.0	0.5	1.4	4.4	1.9	5.1	0.6	1.3	2.7
Willoughby		0.3	0.5	0.4	0.8	0.4	0.5	0.8	0.4	0.4	1.7	0.7	0.4
Wingecarribee		0.6	0.6	0.8	0.8	0.3	0.4	0.9	0.5	0.4	0.3	0.5	0.8
Wollondilly		0.7	0.5	0.7	0.7	0.6	0.3	0.3	0.6	0.4	0.2	0.4	0.6
Wollongong	1.3	0.7	0.9	1.0	0.9	0.9	1.0	0.9	1.0	1.5	1.6	1.0	1.1
Woollahra		0.6	0.6	0.6	0.8	0.2	0.7	0.2	0.6	0.6	0.4	0.7	0.5
Yass Valley		0.6	0.6	1.0	0.8		0.4	0.6	0.9	0.4	0.1	0.4	0.5
NSW	1.0	1.0	1.0	1.0	1.0	1.0	1.0	1.0	1.0	1.0	1.0	1.0	1.0

NSW Recorded Crime Statistics, September Quarter 2023

Appendix Table 1.3: Number of recorded criminal incidents for major offences, NSW LGAs
12 months to September 2023

NSW LGA	Murder	Domestic violence related assault	Non-domestic violence related assault	Sexual assault	Sexual touching, sexual act and other sexual offences	Robbery	Break and enter dwelling	Break and enter non-dwelling	Motor vehicle theft	Steal from motor vehicle	Steal from retail store	Other stealing offences	Malicious damage to property
Albury	2	418	411	108	61	21	233	154	176	553	274	429	701
Armidale Regional	0	219	257	60	65	13	304	65	99	253	132	252	417
Ballina	2	122	144	46	31	12	111	68	105	203	86	220	245
Balranald	0	8	7	5	3	1	6	1	9	3	0	3	9
Bathurst Regional	0	332	251	64	66	12	163	57	83	168	144	211	390
Bayside	2	697	432	74	99	19	200	52	178	404	527	728	821
Bega Valley	0	96	87	23	31	4	27	36	26	37	51	142	204
Bellingen	0	69	67	27	12	1	35	17	16	37	8	66	123
Berrigan	0	66	31	8	3	1	20	14	15	20	4	21	61
Blacktown	3	2,097	1,683	333	347	181	942	234	761	1,596	1,562	1,840	2,494
Bland	0	43	31	4	5	1	20	17	7	15	2	27	48
Blayney	0	35	22	5	9	0	18	19	13	23	8	29	56
Blue Mountains	0	244	225	88	77	6	94	58	49	135	141	191	498
Bogan	1	27	15	4	2	0	18	46	28	34	3	63	36
Bourke	0	170	65	11	6	4	94	63	38	53	49	89	133
Brewarrina	0	62	21	6	5	0	20	16	6	16	0	20	44
Broken Hill	0	326	171	24	35	2	156	56	84	122	97	158	319
Burwood	0	115	156	24	23	14	79	41	29	122	295	238	166
Byron	0	108	229	46	56	3	60	37	83	131	52	225	226
Cabonne	1	38	22	15	6	0	21	27	15	14	6	40	31
Camden	0	315	260	63	71	7	84	59	115	249	171	241	383
Campbelltown	2	973	780	222	184	45	319	134	300	563	829	652	1,185
Canada Bay	0	182	176	42	41	4	147	141	79	166	145	292	269
Canterbury-Bankstown	5	1,562	1,108	251	215	85	559	187	506	1,058	586	1,043	1,483
Carrathool	0	17	13	8	4	0	11	11	5	10	2	17	32
Central Coast	2	1,772	1,476	400	388	67	619	280	530	1,217	1,125	1,300	2,388
Central Darling	0	106	32	12	4	2	29	24	4	13	1	26	76
Cessnock	2	446	330	112	65	18	195	169	284	319	192	522	647
Clarence Valley	1	331	289	87	68	21	147	138	175	205	114	357	469
Cobar	0	35	27	6	3	0	24	14	17	20	3	39	66
Coffs Harbour	1	711	532	147	127	39	274	103	208	385	372	446	702
Coolamon	0	7	5	5	4	0	3	4	2	1	1	5	12
Coonamble	0	72	37	7	10	0	82	45	35	37	8	49	100
Cootamundra-Gundagai	0	72	43	16	14	0	14	12	8	15	9	47	69
Cowra	0	86	80	22	18	1	123	19	39	58	65	62	136
Cumberland	3	947	796	148	140	81	598	172	393	999	434	956	1,020
Dubbo Regional	1	615	546	84	90	32	580	279	305	553	383	506	1,027
Dungog	0	34	24	11	9	0	17	11	10	3	6	43	39
Edward River	0	58	62	13	18	0	36	15	9	34	12	67	107
Eurobodalla	0	261	227	48	38	2	140	50	84	161	162	200	354
Fairfield	0	891	557	137	154	62	248	96	278	561	539	571	857
Federation	0	39	44	11	10	1	17	20	16	26	9	63	69
Forbes	0	65	79	6	9	1	69	31	37	217	28	76	134
Georges River	1	440	304	80	61	20	145	60	95	193	515	329	493

NSW Recorded Crime Statistics, September Quarter 2023

NSW LGA	Murder	Domestic violence related assault	Non-domestic violence related assault	Sexual assault	Sexual touching, sexual act and other sexual offences	Robbery	Break and enter dwelling	Break and enter non-dwelling	Motor vehicle theft	Steal from motor vehicle	Steal from retail store	Other stealing offences	Malicious damage to property
Gilgandra	0	39	22	5	12	1	23	9	6	20	7	39	43
Glen Innes Severn	0	80	69	22	13	2	43	29	19	18	25	66	151
Goulburn Mulwaree	0	209	181	40	40	8	61	40	42	76	125	197	272
Greater Hume Shire	0	40	21	17	9	0	14	15	23	29	3	42	33
Griffith	0	213	132	35	40	8	109	54	60	131	143	141	307
Gunnedah	0	110	80	21	18	4	138	17	89	90	32	77	176
Gwydir	0	12	13	3	5	0	22	12	17	15	1	24	17
Hawkesbury	0	298	219	76	58	3	92	33	67	158	156	183	335
Hay	0	21	20	2	5	0	14	7	4	4	2	13	18
Hilltops	0	147	99	16	26	1	43	14	17	43	28	77	137
Hornsby	2	234	199	59	66	9	120	63	75	203	286	246	356
Hunters Hill	0	14	12	7	8	2	31	13	21	35	4	37	34
Inner West	1	541	626	167	145	42	308	132	232	528	486	856	949
Inverell	0	195	146	33	19	7	108	39	80	79	56	97	235
Junee	0	18	27	12	12	1	15	3	10	6	2	18	23
Kempsey	1	348	217	35	42	22	337	88	202	207	155	291	423
Kiama	0	35	31	9	23	5	24	12	30	75	6	47	62
Ku-ring-gai	0	121	84	47	42	8	110	43	47	143	44	154	171
Kyogle	0	33	26	11	10	0	33	19	26	32	8	23	45
Lachlan	0	63	39	13	8	2	61	46	31	40	7	66	92
Lake Macquarie	0	843	696	227	164	40	449	213	479	850	801	776	1,258
Lane Cove	0	56	43	13	13	3	79	19	23	62	36	101	74
Leeton	0	95	68	18	19	3	76	31	35	45	21	79	161
Lismore	1	224	264	88	54	23	171	117	120	200	211	238	373
Lithgow	0	187	169	27	32	7	90	20	59	110	61	224	224
Liverpool	3	1,237	953	190	193	76	532	163	440	997	589	1,097	1,246
Liverpool Plains	0	64	31	15	11	1	17	11	15	19	2	25	61
Lockhart	0	9	10	3	0	0	11	8	9	7	0	13	31
Lord Howe Island	0	4	1	4	1	0	1	0	0	0	0	2	3
Maitland	0	682	427	133	115	24	275	139	225	466	399	504	748
Mid-Coast	2	607	463	124	144	20	417	165	268	337	326	593	822
Mid-Western Regional	0	150	97	38	33	2	44	29	42	41	55	112	213
Moree Plains	0	265	199	44	22	23	297	96	174	186	178	171	371
Mosman	0	30	29	11	20	4	29	3	17	41	35	87	73
Murray River	0	40	24	11	8	1	54	43	35	41	7	83	46
Murrumbidgee	0	21	15	6	4	0	13	2	9	5	3	17	21
Muswellbrook	0	193	127	41	31	5	79	35	55	93	89	181	223
Nambucca Valley	0	154	106	23	32	1	71	40	62	84	66	107	201
Narrabri	1	104	76	20	10	3	129	22	53	109	40	80	147
Narrandera	0	65	36	11	9	1	26	27	13	25	18	45	82
Narromine	0	73	44	14	8	0	47	35	35	47	18	65	85
Newcastle	1	810	1,083	294	177	94	978	323	637	1,957	941	1,345	1,643
North Sydney	0	80	160	31	43	8	103	27	35	126	131	220	233
Northern Beaches	0	266	509	127	123	33	222	105	177	379	684	789	789
Oberon	1	19	10	5	12	0	13	3	6	4	8	22	16

NSW Recorded Crime Statistics, September Quarter 2023

NSW LGA	Murder	Domestic violence related assault	Non-domestic violence related assault	Sexual assault	Sexual touching, sexual act and other sexual offences	Robbery	Break and enter dwelling	Break and enter non-dwelling	Motor vehicle theft	Steal from motor vehicle	Steal from retail store	Other stealing offences	Malicious damage to property
Orange	0	306	307	79	50	22	388	82	184	313	210	223	561
Parkes	1	140	132	23	19	8	64	33	37	82	45	123	176
Parramatta	0	797	940	163	215	92	676	202	467	1,116	1,215	1,502	1,026
Penrith	4	1,156	1,149	215	224	68	636	260	495	1,165	941	1,085	1,621
Port Macquarie-Hastings	0	455	351	83	76	12	158	81	113	219	164	430	624
Port Stephens	0	436	363	89	69	16	162	137	142	223	175	313	700
Queanbeyan-Palerang Regional	0	225	219	48	52	11	110	56	90	174	132	237	351
Randwick	0	426	570	115	97	27	254	59	164	383	273	745	644
Richmond Valley	0	152	138	48	39	10	149	63	99	122	57	146	236
Ryde	0	215	229	53	46	13	224	57	111	261	350	424	329
Shellharbour	1	270	230	75	83	11	102	46	96	257	307	250	441
Shoalhaven	2	462	468	134	111	18	252	174	183	344	398	434	1,018
Singleton	0	97	109	28	33	0	56	60	61	83	52	112	192
Snowy Monaro Regional	0	74	70	14	16	2	28	24	9	28	10	90	128
Snowy Valleys	0	66	65	37	12	1	24	35	8	21	20	59	100
Strathfield	1	156	138	25	44	10	131	38	71	187	142	261	149
Sutherland Shire	0	611	430	118	123	31	224	50	131	325	440	498	775
Sydney	2	1,190	2,809	374	388	179	556	356	301	731	2,723	4,179	2,038
Tamworth Regional	1	434	383	118	95	31	564	120	232	445	283	393	728
Temora	0	28	27	4	6	2	25	15	1	12	12	34	34
Tenterfield	0	61	40	14	10	1	27	13	12	15	11	43	86
The Hills Shire	0	330	285	69	84	28	224	104	137	300	368	475	491
Tweed	0	351	370	75	85	21	221	131	242	345	307	457	565
Unincorporated Far West	0	4	5	4	6	0	1	3	3	17	8	17	7
Upper Hunter Shire	0	59	48	15	17	3	23	17	20	32	16	52	57
Upper Lachlan Shire	0	24	15	7	4	0	11	7	6	7	0	41	39
Uralla	0	17	23	10	5	1	12	7	8	8	1	20	30
Wagga Wagga	0	498	445	104	87	10	392	108	139	400	327	432	729
Walcha	0	27	24	10	8	0	8	5	1	4	0	9	19
Walgett	0	190	78	16	15	0	37	29	24	59	17	57	146
Warren	0	36	18	2	6	0	26	17	20	21	9	31	60
Warrumbungle Shire	0	90	63	8	15	0	49	38	12	32	24	88	102
Waverley	2	212	291	64	60	9	92	31	113	120	797	428	303
Weddin	0	3	5	2	2	0	5	4	3	5	6	12	11
Wentworth	0	73	41	6	7	1	26	34	24	136	14	45	121
Willoughby	0	112	152	33	57	7	92	59	52	117	428	264	197
Wingecarribee	0	135	125	43	37	4	47	49	47	66	55	117	245
Wollondilly	0	164	101	35	33	8	42	16	60	82	29	102	184
Wollongong	2	682	843	216	165	50	517	199	372	1,181	1,122	1,009	1,384
Woollahra	0	133	142	32	40	2	87	12	51	106	76	189	172
Yass Valley	0	48	44	17	12	0	15	10	27	27	4	29	52
In Custody	0	6	1,175	292	90	7	0	1	1	2	0	7	53
NSW	58	35,329	33,517	7,978	7,209	1,996	19,767	8,358	13,844	28,738	27,015	38,033	49,086

NSW Recorded Crime Statistics, September Quarter 2023

Appendix Table 1.4: Number of recorded criminal incidents for major offences, NSW LGAs
12 months to September 2022

NSW LGA	Murder	Domestic violence related assault	Non-domestic violence related assault	Sexual assault	Sexual touching, sexual act and other sexual offences	Robbery	Break and enter dwelling	Break and enter non-dwelling	Motor vehicle theft	Steal from motor vehicle	Steal from retail store	Other stealing offences	Malicious damage to property
Albury	0	430	411	68	92	15	240	104	174	712	213	370	745
Armidale Regional	0	203	188	55	58	13	196	71	54	222	138	197	383
Ballina	1	146	157	38	32	12	80	37	66	159	65	202	258
Balranald	0	8	9	0	1	0	11	2	8	9	0	8	18
Bathurst Regional	1	298	241	64	64	14	172	56	85	184	140	226	446
Bayside	0	678	430	83	87	31	211	71	152	384	433	717	726
Bega Valley	0	111	96	27	31	0	36	23	22	58	53	100	178
Bellingen	0	32	50	29	23	0	23	27	24	36	11	56	86
Berrigan	0	41	30	12	12	1	18	34	11	18	8	44	97
Blacktown	4	2,004	1,524	338	374	146	884	231	589	1,553	1,214	1,703	2,655
Bland	0	23	18	5	8	0	10	13	19	26	1	23	35
Blayney	0	23	17	9	5	2	18	18	7	12	4	30	36
Blue Mountains	1	250	184	82	62	5	86	43	45	137	93	214	500
Bogan	0	32	12	3	2	2	16	32	11	22	7	26	59
Bourke	0	111	65	24	8	3	62	81	29	99	16	68	168
Brewarrina	0	65	36	7	2	2	24	12	7	8	2	13	56
Broken Hill	0	245	148	14	37	4	138	40	47	81	58	135	305
Burwood	0	100	120	27	32	14	99	39	37	95	251	230	153
Byron	0	123	220	44	37	1	44	51	68	121	44	193	279
Cabonne	0	47	24	13	9	0	27	15	26	24	7	38	68
Camden	0	336	188	52	68	11	81	29	72	206	138	221	333
Campbelltown	2	1,045	675	202	210	49	326	92	241	668	596	643	1,181
Canada Bay	1	156	123	34	39	8	138	43	88	209	111	293	256
Canterbury-Bankstown	7	1,354	916	217	235	76	511	187	497	1,057	473	928	1,405
Carrathool	0	18	10	6	1	0	7	22	13	5	2	14	34
Central Coast	6	1,657	1,508	418	368	75	545	242	425	1,179	829	1,062	2,252
Central Darling	0	88	26	4	6	1	11	23	5	6	0	19	35
Cessnock	0	318	315	102	84	13	183	87	250	369	152	459	591
Clarence Valley	0	241	226	45	60	8	194	105	139	268	101	401	416
Cobar	0	24	24	6	8	0	8	22	16	18	11	46	69
Coffs Harbour	0	578	500	119	111	24	258	137	224	466	217	476	786
Coolamon	0	11	4	6	2	0	6	3	6	1	0	14	21
Coonamble	0	58	45	7	9	2	75	19	14	27	9	56	114
Cootamundra-Gundagai	0	58	47	10	12	1	21	12	15	20	6	48	56
Cowra	0	104	76	12	26	6	112	38	42	42	29	87	147
Cumberland	5	944	729	140	135	61	531	150	409	831	340	790	972
Dubbo Regional	0	675	419	93	107	24	570	227	284	569	305	456	792
Dungog	0	37	23	11	9	0	8	4	16	22	2	52	54
Edward River	1	82	48	4	9	1	29	10	11	16	9	46	103
Eurobodalla	0	217	155	40	48	11	87	85	56	113	154	165	359
Fairfield	1	933	502	106	145	42	274	70	234	520	356	574	906
Federation	1	33	37	7	7	0	16	12	13	31	21	69	59
Forbes	0	53	59	11	13	2	71	17	35	44	19	77	153
Georges River	0	440	302	55	80	23	201	60	119	310	235	353	474
Gilgandra	0	38	23	14	6	3	21	18	7	11	7	24	57
Glen Innes Severn	0	54	46	21	19	1	60	30	22	37	41	87	135

NSW Recorded Crime Statistics, September Quarter 2023

NSW LGA	Murder	Domestic violence related assault	Non-domestic violence related assault	Sexual assault	Sexual touching, sexual act and other sexual offences	Robbery	Break and enter dwelling	Break and enter non-dwelling	Motor vehicle theft	Steal from motor vehicle	Steal from retail store	Other stealing offences	Malicious damage to property
Goulburn Mulwaree	0	132	132	33	47	4	79	41	35	67	101	224	233
Greater Hume Shire	0	33	21	20	12	0	17	12	20	23	6	42	39
Griffith	0	183	137	40	39	9	124	81	87	156	105	157	266
Gunnedah	0	116	70	20	16	1	117	29	65	62	26	82	155
Gwydir	0	12	17	4	7	0	8	5	7	12	1	20	15
Hawkesbury	0	286	193	66	74	8	85	23	85	108	106	172	332
Hay	0	26	19	8	2	0	18	12	5	7	2	22	38
Hilltops	0	139	93	21	13	3	32	20	35	46	28	74	164
Hornsby	1	221	161	77	60	14	74	45	43	158	261	239	367
Hunters Hill	0	14	20	9	10	0	33	6	12	24	1	44	34
Inner West	4	481	553	138	155	41	297	131	191	481	439	836	917
Inverell	0	198	153	33	28	3	102	47	45	97	68	114	268
Junee	0	16	20	9	8	1	6	2	4	2	2	28	27
Kempsey	1	257	180	49	46	8	251	57	118	165	103	356	377
Kiama	0	30	25	17	13	2	17	18	19	79	6	52	70
Ku-ring-gai	0	133	68	50	28	6	154	36	54	154	29	147	205
Kyogle	1	32	30	9	2	0	24	18	17	12	9	27	40
Lachlan	0	54	48	5	12	4	73	71	49	38	8	58	106
Lake Macquarie	0	824	667	248	209	26	397	201	382	752	475	758	1,306
Lane Cove	0	59	35	14	13	2	66	16	26	60	31	126	90
Leeton	0	91	84	43	25	1	41	16	22	16	10	64	126
Lismore	0	222	268	71	68	11	150	109	136	215	49	238	396
Lithgow	0	139	117	37	30	5	45	23	22	67	47	176	197
Liverpool	0	1,094	762	166	194	53	475	118	307	779	541	859	1,199
Liverpool Plains	0	54	42	12	8	6	29	25	11	17	3	32	64
Lockhart	0	6	5	2	5	1	6	0	5	4	0	11	19
Lord Howe Island	0	0	1	0	0	0	1	0	0	0	0	3	5
Maitland	0	560	385	138	118	22	220	99	166	517	284	552	725
Mid-Coast	0	536	435	123	145	16	473	248	182	338	209	751	873
Mid-Western Regional	0	162	119	46	34	2	39	17	24	27	36	91	221
Moree Plains	1	283	180	32	21	7	215	52	84	152	110	190	430
Mosman	0	24	39	17	22	0	31	5	17	48	24	85	81
Murray River	0	34	24	13	13	0	18	29	26	26	5	76	80
Murrumbidgee	0	17	9	2	3	2	14	6	9	2	1	13	37
Muswellbrook	0	130	129	33	30	2	85	30	43	101	43	200	203
Nambucca Valley	0	207	127	16	34	8	70	34	35	98	43	112	267
Narrabri	0	126	66	17	13	1	93	22	41	70	14	96	115
Narrandera	0	45	27	12	10	3	35	24	7	20	19	25	71
Narromine	0	67	48	11	21	3	35	27	22	31	3	53	71
Newcastle	3	786	1,054	220	165	89	855	334	565	1,629	756	1,288	1,759
North Sydney	0	77	126	29	36	3	80	32	30	116	103	220	191
Northern Beaches	0	253	473	137	148	29	224	60	164	456	505	563	785
Oberon	0	13	6	6	11	0	7	8	5	9	0	23	28
Orange	0	365	315	89	67	18	264	94	148	387	200	279	602
Parkes	0	117	90	19	29	2	39	20	33	85	40	123	182
Parramatta	2	826	755	186	230	60	717	181	305	927	704	1,360	1,035
Penrith	0	1,117	1,019	256	264	76	591	175	378	977	754	900	1,669

NSW Recorded Crime Statistics, September Quarter 2023

NSW LGA	Murder	Domestic violence related assault	Non-domestic violence related assault	Sexual assault	Sexual touching, sexual act and other sexual offences	Robbery	Break and enter dwelling	Break and enter non-dwelling	Motor vehicle theft	Steal from motor vehicle	Steal from retail store	Other stealing offences	Malicious damage to property
Port Macquarie-Hastings	0	374	341	96	107	10	153	78	123	220	136	424	586
Port Stephens	0	371	303	103	93	13	109	105	102	231	128	314	605
Queanbeyan-Palerang Regional	0	203	184	49	48	8	113	71	124	319	95	246	332
Randwick	0	365	486	89	95	16	204	34	107	406	197	528	570
Richmond Valley	2	174	125	43	37	4	174	71	91	136	29	151	315
Ryde	0	218	212	54	52	13	193	81	70	208	220	376	380
Shellharbour	1	240	195	57	70	8	112	30	102	265	230	225	456
Shoalhaven	2	450	440	130	123	22	245	116	129	287	225	385	789
Singleton	0	115	81	38	33	2	67	57	61	104	35	128	252
Snowy Monaro Regional	0	61	59	32	17	0	22	22	9	30	5	81	110
Snowy Valleys	0	75	73	28	13	3	19	17	18	23	18	73	119
Strathfield	0	134	100	28	19	8	131	24	42	161	110	203	140
Sutherland Shire	0	670	441	132	122	25	194	60	106	345	296	445	855
Sydney	2	1,176	2,540	301	422	123	478	325	237	753	2,078	3,383	2,020
Tamworth Regional	0	441	402	90	77	25	544	100	229	397	192	329	809
Temora	0	11	20	11	3	0	18	12	14	13	9	29	40
Tenterfield	0	43	32	15	10	0	27	10	13	8	5	38	60
The Hills Shire	0	327	244	98	97	19	213	69	103	235	267	433	534
Tweed	1	411	326	62	69	23	197	73	182	334	114	404	558
Unincorporated Far West	0	1	7	8	6	0	7	2	2	8	2	8	4
Upper Hunter Shire	0	71	53	30	19	1	36	16	15	32	6	63	90
Upper Lachlan Shire	0	11	11	4	4	1	13	5	9	7	0	21	30
Uralla	0	27	11	2	5	0	8	10	9	6	2	16	26
Wagga Wagga	1	481	410	83	73	13	426	68	216	585	312	428	757
Walcha	0	19	13	8	2	0	7	10	0	3	4	8	26
Walgett	0	142	72	12	17	3	43	33	25	45	18	55	130
Warren	0	36	21	4	4	1	25	10	21	37	5	39	42
Warrumbungle Shire	0	73	43	18	17	0	38	18	19	41	24	74	61
Waverley	0	170	282	50	75	12	88	23	84	104	604	298	319
Weddin	0	9	5	1	1	0	5	0	2	3	1	14	24
Wentworth	0	80	39	6	6	0	19	35	17	22	3	44	97
Willoughby	0	118	111	41	51	12	131	36	34	143	384	234	225
Wingecarribee	0	112	97	71	73	3	31	10	21	54	24	97	240
Wollondilly	0	178	78	26	42	2	40	9	35	48	13	101	175
Wollongong	0	643	766	203	186	51	489	183	360	1,006	768	864	1,278
Woollahra	0	111	134	40	42	2	100	17	75	92	58	194	177
Yass Valley	0	42	25	10	14	1	5	14	23	24	3	38	72
In Custody	1	3	1,011	443	134	4	0	0	0	1	0	7	83
NSW	54	33,305	30,146	7,803	7,609	1,687	18,289	7,257	11,649	27,358	19,851	34,812	48,877

APPENDIX 2

EXPLANATORY NOTES

Appendix 2.1: Explanatory Notes

What are crime statistics?

BOCSAR's crime statistics consist of criminal incidents reported to, or detected by, police and recorded on the NSW Police Force's Computerised Operational Policing System (COPS). While this system is used for record-keeping for all police operations, not just for criminal matters, BOCSAR only reports on criminal incidents and selected policing activities. BOCSAR's crime statistics therefore do not capture crimes that are not recorded on COPS. The Australian Bureau of Statistics conducts regular crime and victim surveys which attempt to capture a snapshot of both reported and unreported crimes.

How to interpret crime statistics

Recorded crime statistics for some offence categories do not accurately reflect the actual level of crime in the community. This is because the number of incidents recorded may be affected by extraneous factors which are not easily measured. In particular:

- > Public willingness to report crime - Many crimes which occur are not reported to police and will therefore not be recorded - for example, a large number of assaults, sexual assaults and robberies are not reported to police.
- > Shifts in policing policy - Recording of those offences which are detected by, rather than reported to police, are strongly affected by policing practices - examples of these are drug offences, drink driving offences, offensive behaviour and receiving stolen goods. Recorded rates for such offences do not accurately reflect actual rates.
- > High visitor populations compared to residential populations - Sydney Local Government Area has relatively high recorded crime rates because, compared with other regions, the resident population is small relative to the number of people in the area. In other words, the area has a high user population which is not reflected in the denominator of the rate calculation.
- > Areas with small residential populations - Recorded crime rates in Local Government Areas with small population sizes are not always a good indicator of offending. Crime rates in areas with populations under 3,000 may be unreliable and should be interpreted with caution.

What offences are included?

BOCSAR's standard quarterly publications report on 13 major offence categories, which include serious personal violence and property offences. In addition to these offences, we also release data for 62 specific offence categories.

From the September Quarter 2021 report, the offence category previously labelled 'indecent sexual assault, act of indecency and other sexual offences' is labelled 'sexual touching, sexual act and other sexual offences'.

Commencing March 2020, the NSW Government issued public health orders under the NSW Public Health Act 2010 (NSW) to limit the spread of COVID-19. Police can issue a fine or court attendance notice for failure to comply with the orders. Breaches of these orders are counted as "other offences" in this report.

What is being counted?

- > Incidents - When a crime is reported to, or detected by, the NSW Police they record it as a criminal event on COPS. The event date is the date that the crime was reported. Unless otherwise stated, the date BOCSAR attaches to a crime is the event date. One criminal event can contain multiple criminal incidents. BOCSAR's default counting unit for crime data is criminal incidents with the exception of murder and manslaughter. Criminal incidents are activities detected by or reported to police which involve the same offender(s) and victim(s); occur at the one location during one uninterrupted period of time; fall into one offence category and one incident type.
- For murder and manslaughter only, the counting units used are victims.

- > Alleged offenders - BOCSAR also reports on alleged offenders or 'Persons of Interest' (POIs) who have had a legal proceeding commenced against them by the NSW Police Force. Within the police recorded crime data POIs may not have been convicted in court, however they have been proceeded against in some way or another by the police. There could be quite some time between an event being recorded by police, an investigation being completed and an alleged offender (i.e. a POI) being charged. Consequently, POIs are counted in the time period they were proceeded against, rather than the time period the event /incident was reported to or recorded by police.
- > Legal proceedings against alleged offenders presented in Tables 3.1 and 3.2 include persons proceeded against to court and persons diverted from court (by way of criminal infringement notice, cannabis or other drug caution and diversions under the Young Offenders Act 1997, including Youth Justice Conference, Caution and Warning). Young people proceeded against by way of a Warning for Transport and regulatory offences have been excluded from table 3.2 as Warnings are not a diversion for these offences.
- > Young people proceeded against by way of a Warning under the Young Offenders Act 1997 for Transport and regulatory offences have been excluded from table 3.2 as Warnings are not a diversion for these offences.
- > Proceeded against to court (breach of bail) in Tables 3.1 and 3.2 includes persons with breach of bail as the only matter on the criminal event recorded by the NSW Police Force. Breaching bail is not a criminal offence by it can lead to being brought to court by police for the court to reconsider bail.
- > Infringement Notices (fines) are not included in this report but have been included in past reports as they are not a form of court diversion.

What are crime trends and how are they calculated?

In general, BOCSAR relies upon the Kendall Rank Order Correlation statistical test (or Kendall's tau-b) to determine whether a series is trending upwards, downwards or is stable ($p < .05$). In some tables a stable trend is represented by 'ns' (not significant). The statistical test is applied to the monthly data over the specified period. Where a significant trend is found, the average annual percentage change over the time period is reported. If any of the 12-monthly totals in the series have a value of less than 20, a trend test is not conducted. When this occurs, the relevant cell will be left blank or contain 'n.c.' (not calculated). For murder and manslaughter incidents, the trend test is applied to the monthly number of recorded victims rather than criminal incidents.

How is the ratio to NSW calculated?

The ratio to NSW rate statistics are a comparison of a NSW regional rate per 100,000 population to the NSW rate per 100,000 population. A ratio of one indicates parity with the NSW rate. Ratios indicating double the NSW rate (or more) before rounding are highlighted in red, whilst ratios indicating half the NSW rate (or less) before rounding are highlighted in green. Ratios are not calculated for regions with a population of less than 3,000.

How are 'young people' and 'adults' defined?

The term 'young people' refers to persons aged 10-17 years at the time of the offence; 'adults' refers to persons aged 18 years and older at the time of the offence.

Regional Statistics

Statistics are provided on the number of criminal incidents (victims for murder) recorded for each of the Statistical Areas Level 4 (SA4s) of NSW as defined by the Australian Bureau of Statistics (ABS). Recorded criminal incidents which occurred in correctional, detention or remand centres, however, are not counted in the SA in which the incident occurred. Note that LGA boundaries change from time to time. A criminal incident is counted within a particular region when the location of the offence falls within that region.

What is included in 'selected policing activities'?

- > Bail compliance checks - checks conducted by police to assess if bail conditions are being complied with.
- > ADVO compliance checks - checks conducted by police to assess if ADVO conditions are being complied. These checks can also include checking on the person in need of protection and taking the necessary action if a breach is detected.
- > Move on directions - a 'move on direction' is a direction given to a person by a police officer, under section 198 of the Law Enforcement (Powers and Responsibilities) Act 2002 (NSW), to leave a public place and not return for a specified period.
- > Searches - If the police have reasonable grounds they may, without a warrant, stop and search a person and anything in their possession or under their control, including a vehicle.
- > Detain/convey person to mental health facility - The police detain a person at risk of harm to themselves or others and transport them to a mental health facility for assessment under section 22 of the Mental Health Act 2007 (NSW).

What are non-criminal domestic episodes?

Incidents attended by police where a domestic dispute is recorded as having taken place but no criminal incident has been recorded. The vast majority of these episodes are verbal altercations.

Where can I find more detail and explanatory notes?

Detailed definitions and explanatory notes are available at

https://www.bocsar.nsw.gov.au/Pages/bocsar_crime_stats/bocsar_glossary.aspx

APPENDIX 3

LGAs IN STATISTICAL AREAS

Appendix Table 3.1: Local Government Areas in Greater Sydney Statistical Areas

Baulkham Hills and Hawkesbury	Blacktown	Central Coast
Hawkesbury*	Blacktown	Central Coast
The Hills Shire*		
City and Inner South	Eastern Suburbs	Inner South West
Sydney*	Randwick*	Bayside*
	Waverley	Canterbury-Bankstown*
	Woollahra	Georges River
Inner West	North Sydney and Hornsby	Northern Beaches
Burwood	Hornsby*	Northern Beaches
Canada Bay	Ku-ring-gai	
Strathfield*	Lane Cove	
Inner West*	Mosman	
	North Sydney	
	Willoughby	
Outer South West	Outer West and Blue Mountains	Parramatta
Camden*	Blue Mountains*	Cumberland*
Campbelltown*	Penrith*	Parramatta*
Wollondilly*		
Ryde	South West	Sutherland
Hunters Hill	Fairfield*	Sutherland Shire*
Ryde*	Liverpool*	

* These LGAs span across two or more Statistical Areas.

These LGAs are listed under the Greater Sydney Statistical Areas which contain the largest area of each LGA.

Appendix Table 3.2: Local Government Areas in Regional Statistical Areas

Capital Region	Central West	Coffs Harbour - Grafton	Far West and Orana
Bega Valley	Bathurst Regional	Bellingen*	Bogan
Eurobodalla	Bland*	Clarence Valley*	Bourke
Goulburn Mulwaree	Blayney	Coffs Harbour	Brewarrina
Hilltops	Cabonne*		Broken Hill
Queanbeyan-Palerang Regional	Cowra		Central Darling
Snowy Monaro Regional*	Forbes		Cobar
Upper Lachlan Shire	Lachlan*		Coonamble
Yass Valley*	Lithgow		Dubbo Regional*
	Mid-Western Regional*		Gilgandra
	Oberon*		Narromine
	Orange		Unincorporated Far West
	Parkes		Walgett
	Weddin		Warren
			Warrumbungle Shire*
Hunter Valley excluding Newcastle	Illawarra	Mid North Coast	Murray
Cessnock	Kiama*	Kempsey	Albury
Dungog	Shellharbour	Lord Howe Island	Balranald
Maitland*	Wollongong	Mid-Coast*	Berrigan
Muswellbrook		Nambucca*	Edward River
Port Stephens*		Port Macquarie-Hastings	Federation*
Singleton*			Greater Hume Shire*
Upper Hunter Shire*			Hay
			Murray River
			Wentworth
New England and North West	Newcastle and Lake Macquarie	Richmond - Tweed	Riverina
Armidale Regional*	Lake Macquarie*	Ballina	Carrathool*
Glen Innes Severn	Newcastle	Byron	Coolamon
Gunnedah		Kyogle	Cootamundra-Gundagai
Gwydir		Lismore	Griffith
Inverell		Richmond Valley*	Junee
Liverpool Plains*		Tweed	Leeton
Moree Plains			Lockhart*
Narrabri			Murrumbidgee*
Tamworth Regional			Narrandera
Tenterfield			Snowy Valleys*
Uralla			Temora
Walcha			Wagga Wagga
Southern Highlands and Shoalhaven			
Shoalhaven*			
Wingecarribee*			

* These LGAs span across two or more Statistical Areas.

These LGAs are listed under the NSW Regional Statistical Areas which contain the largest area of each LGA.

Appendix Table 3.3: Greater Sydney Statistical Area Map



Appendix Table 3.4: Regional NSW Statistical Areas Map



APPENDIX 4

OFFENCE CATEGORIES

Appendix 4.1: BOCSAR offences mapped to NSW Police Force incident categories

BOCSAR offence	NSW Police Force incident categories
Homicide	
Murder	Murder
Attempted murder	Murder – attempted Shoot with intent to murder
Murder accessory, conspiracy	Murder – conspiracy Murder – solicit
Manslaughter – not driving	Assault causing death (s25A) Manslaughter
Assault	
	<i>Includes any of the following offences disaggregated by whether or not police have flagged the incident as domestic violence related:</i>
Domestic violence related	Actual bodily harm Assault common Grievous bodily harm (including malicious wounding) Shoot with intent other than to murder Spike drink/food
Non-domestic violence related	Actual bodily harm Assault common Grievous bodily harm (including malicious wounding) Shoot with intent other than to murder Spike drink/food
Assault Police	Assault Police officer
Sexual offences	
Sexual assault	Sexual assault – adult victim (16 years old and over) Sexual assault – child victim, reported when child Sexual assault – child victim, reported when adult
Sexual touching, sexual act and other sexual offences	Sexual act – adult victim (16 years old and over) Sexual act – child victim, reported when child Sexual act – child victim, reported when adult Sexual touching – adult victim (16 years old and over) Sexual touching – child victim, reported when child Sexual touching – child victim, reported when adult Act of indecency Aggravated act of indecency Bestiality Carnal knowledge Grooming/procuring Incest Indecent communication Peep or pry Wilful and obscene exposure Other sexual offence Voyeurism/Film person
Abduction and kidnapping	
	Kidnapping/Abduction People trafficking
Robbery	
Robbery without a weapon	Includes any of the following offences in which no weapon was recorded: Demand money with menaces Robbery Robbery with aggravation Robbery with wounding Other robbery

BOCSAR offence	NSW Police Force incident categories
Robbery with a firearm	<i>Includes any of the following offences in which a firearm was recorded as a weapon:</i> Armed robbery Demand money with menaces Robbery Robbery with aggravation Robbery with wounding Other robbery
Robbery with a weapon not a firearm	<i>Includes any of the following offences in which a non firearm weapon was recorded:</i> Armed robbery Demand money with menaces Robbery Robbery with aggravation Robbery with wounding Other robbery
Blackmail and extortion	Extortion/Blackmail
Intimidation, stalking and harassment	Bullying/harassment or intimidation Stalking (since 2017) Child approach (since 2017) Riot and affray Telecommunications offence (includes nuisance phone calls) Indecent Communication Threats against Police Violent disorder Unlawful assembly
Other offences against the person	Labour exploitation (includes sexual servitude) Malicious damage with intent to injure/endanger Negligent act cause grievous bodily harm Other offence against the person
Theft	
Break and enter – dwelling	<i>Dwelling includes premises where people reside such as house, home unit, caravan, tent as well as any attachment such as garage, shed, yard and garden.</i> Break/Enter and steal Break/Enter and commit other felony Break/Enter intent to steal Break/Enter intent to commit other felony
Break and enter – non-dwelling	<i>Non-dwelling includes commercial and government premises.</i> Break/Enter and steal Break/Enter and commit other felony Break/Enter intent to steal Break/Enter intent to commit other felony
Receiving or handling stolen goods	Receiving Goods in custody Possess property stolen outside NSW Deal with proceeds of crime Money Laundering
Motor vehicle theft	Theft of motor cars, motor cycles, and other vehicles / vessels Rebirthing vehicles / vessels Vehicle/Vessel Unique Identifier
Steal from motor vehicle	Steal from motor vehicle
Steal from retail store	Steal from retail store
Steal from dwelling	Steal from dwelling
	Other stealing occurring in a residential dwelling
Steal from person	Steal from person

BOCSAR offence	NSW Police Force incident categories
Stock theft	Steal stock (Non-domestic animal)
Fraud	Company/corporate offence Computer crime Copyright/Intellectual property/Trademark Corrupt commission/practices Corrupt payment (receive or pay) Counterfeit currency Deception offence Embezzlement Fail to pay Forgery (since 2017) Fraudulent misappropriation Larceny clerk/servant/bailee Make/use false instrument Misappropriate cheques/funds Possess false instrument Publish false misleading statement Receiving (fraud related) Scams - obtain funds (since 2017) Scams - selling (since 2017) Unauthorised access of funds (since 2017) Deal/supply false identity documents (since 2017) Deal/supply false information (since 2017) Equipment to make false identity documents (since 2017) Make false identity documents (since 2017) Possess false identity documents (since 2017) Possess identity information (since 2017) Use false identity documents (since 2017) Other fraud
Other theft	Steal from dwelling occurring somewhere other than a residential or non-residential dwelling (e.g. from hostels, motels, boarding houses etc) Steal from marine vessel Steal vessel Other stealing <i>occurring somewhere other than a dwelling (e.g. in outdoor/public places)</i>
Arson	<i>Fire incident where classified as deliberate (to March 2023) or as suspicious - arson or suspicious - reckless (from March 2023):</i> Bushfire related Structure (not bushfire related) Vehicle/Transport/Aircraft Other commodity
Malicious damage to property	Graffiti Malicious damage to property Public place – damage fountain/wall etc. Public place – damage shrine/monument
Drug offences	
Possession and/or use of cocaine	Possess drug where drug type is cocaine Use or administer drug where drug type is cocaine Item/object found where drug type is cocaine
Possession and/or use of narcotics	Possess drug <i>where drug type is narcotics</i> Use or administer drug <i>where drug type is narcotics</i> Item/object found where drug type is narcotics
Possession and/or use of cannabis	Possess drug / plant where drug type is cannabis Use or administer drug where drug type is cannabis Item/object found where drug type is cannabis
Possession and/or use of amphetamines	Possess drug where drug type is amphetamines Use or administer drug where drug type is amphetamines Item/object found where drug type is amphetamines
Possession and/or use of ecstasy	Possess drug where drug type is ecstasy

BOCSAR offence	NSW Police Force incident categories
Possession and/or use of ecstasy (continued)	Use or administer drug where drug type is ecstasy Item/object found where drug type is ecstasy
Possession and/or use of other drugs	Possess drug where drug type is not cocaine, narcotics, cannabis, amphetamines or ecstasy Use or administer drug where drug type is not cocaine, narcotics, cannabis, amphetamines or ecstasy Item/object found where drug type is not cocaine, narcotics, cannabis, amphetamines or ecstasy
Dealing, trafficking in cocaine	Supply drug where drug type is cocaine
Dealing, trafficking in narcotics	Supply drug where drug type is narcotics
Dealing, trafficking in cannabis	Supply drug/plant where drug/plant type is cannabis
Dealing, trafficking in amphetamines	Supply drug where drug type is amphetamines
Dealing, trafficking in ecstasy	Supply drug where drug type is ecstasy
Dealing, trafficking in other drugs	Supply drug/plant where drug/plant type is not cocaine, narcotics, cannabis, amphetamines or ecstasy
Cultivating cannabis	Cultivation
Manufacture drug	Manufacture drug
Importing drugs	Import drug/plant
Other drug offences	Forge and/or utter prescription Possess drug utensil Other drug detection/seizure offence
Prohibited and regulated weapons offences	
	Bomb hoax or threat Discharge firearm into premises Licence offence Firearms dealer offence Firearms not ensure safekeeping Improper storage of explosives Person search - Item/object found where item/object is a weapon Possess explosive/dangerous article Possess prohibited weapon/article Possess shortened firearm Possess whilst unlicensed Sell prohibited weapon/article Shorten firearm Trespass with firearm Unlawful handling/access/supply of explosives Unlawfully discharge firearm Use firearm under influence Use prohibited weapon/article Other explosives offence Other firearm licencing offence Other firearm offence Other prohibited weapon/article offence
Disorderly conduct	
Trespass	Trespass Remain inclosed lands
Offensive conduct	Offensive behaviour
Offensive language	Offensive language
Criminal intent	Armed with intent Charge with intent Disguised with intent Enter land with intent Intent to repeat indictable offence Instruments of crime Possess implements

BOCSAR offence	NSW Police Force incident categories
Betting and gaming offences	Conduct/play illegal betting Conduct/play illegal game Own/manage premises – betting Own/manage premises – gaming Other gaming offence
Liquor offences	Consume alcohol in alcohol-free zone Consume/possess alcohol in public by minor Licensing legislation offence: – Offence by licensee/employee/secretary – Offence by minor – Offence by customer (not minor) – Supply liquor to juvenile – Offence against registered clubs legislation
Pornography offences	Possess/disseminate child pornography Possess/publish indecent material
Prostitution offences	Soliciting/prostitution in public Procure Prostitute (Including child prostitute) Prostitution – premises Prostitution – live off earnings Child prostitution Other vice offence
Against justice procedures	
Escape Custody	Escapee – Corrective Services custody Escapee – Department of Community Services custody Escapee – Police custody Escapee – Other custody
Breach Apprehended Violence Order	Breach Apprehended Violence Order – domestic Breach Apprehended Violence Order – personal
Breach bail conditions	Breach bail conditions Breach control order
Fail to appear	Fail to appear
Resist or hinder officer	Refuse direction Refuse direction continue intoxication and disorder Refuse direction intoxicated person Refuse to be searched Refuse to produce object Resist/hinder officer
Other offences against justice procedures	Other judicial offence Fail to comply Contravene Child Protection Prohibition Order (CPPO)
Transport regulatory offences	Transport offence (includes offences on the rail network such as travelling without a valid ticket, smoking, drinking or using offensive language on a train Buffer riding
Other offences	Animals - Dog offences Cyber Breach/Attack False 000 call Family law offence Immigration/customs offence Obstruction Offence against transport service

BOCSAR offence	NSW Police Force incident categories
Other offences (continued)	<div>Breach COVID 19 direction</div> <div>Other street offences (carry cutting weapon, offensive implement)</div> <div>Public mischief</div> <div>Terrorism offences (e.g. associating with terrorist organisations, financing terrorism etc.)</div> <div>Other miscellaneous offences</div> <div>Offences under various acts:</div> <div>Animals - Prevention Of Cruelty Acts</div> <div>Bush Fire Act</div> <div>Child Protection Act</div> <div>Local Government Act</div> <div>Marine/Waterway Act</div> <div>Pawnbrokers Act</div> <div>Postal Services Act</div> <div>Public Health Act</div> <div>Security Industry Act</div> <div>Sydney Harbour Bridge Act</div> <div>Tattoo Parlours Act</div>