

NEW SOUTH WALES RECORDED CRIME STATISTICS

**Quarterly Update
December 2017**

Revised Edition September 2018

**NSW
Statistical Areas
and
Local Government Areas**

REVISED EDITION

This is a revised edition of the original report. The revision was created in September 2018 to incorporate updates to the historic counts of murder and drug possession offences. The murder revisions have increased the number of murder victims by 4% between 2011 and 2017. The drug possession revisions have resulted in a 25% reduction in the volume of these offences from 2010 due to some incidents previously being double counted.

NSW Bureau of Crime Statistics and Research

ACKNOWLEDGEMENTS

The production of this report was greatly assisted by officers within the NSW Police Force. Special thanks are due to officers in Business and Technology Services and in Corporate Information, Executive Support Group.

REVISED EDITION

This is a revised edition of the original report. The revision was created in September 2018 to incorporate updates to the historic counts of murder and drug possession offences. The murder revisions have increased the number of murder victims by 4% between 2011 and 2017. The drug possession revisions have resulted in a 25% reduction in the volume of these offences from 2010 due to some incidents previously being double counted.

2018

Published by the NSW Bureau of Crime Statistics and Research
Department of Justice
Level 1
Henry Deane Building
20 Lee St
Sydney NSW 2000
Australia

Phone: + 61 (2) 8346 1100
Fax: + 61 (2) 8364 1298
Email: bcsr@justice.nsw.gov.au
Website: www.bocsar.nsw.gov.au
ISSN: 1035-9044

This report is available in pdf format on our website and may be provided in alternative formats. Please contact the Bureau on 8346 1100 or email us at bcsr@justice.nsw.gov.au.

INTRODUCTION

This report presents data on crime reported to, or detected by, the NSW Police Force from January 1995 to December 2017, with a focus on the statistical trends for the 24 months ending December 2017. The data were extracted from the Computerised Operational Policing System (COPS) of the NSW Police Force in February 2018.

The report includes an overview of trends in the most recent two-year period for major offence categories, firstly for NSW and then across NSW regions broken down to the Local Government Area (LGA) level. At the State level, for the 24-month period to the end of December 2017 one major offence category has been trending upwards: steal from retail store (up 3.9%). Four of the 17 major offence categories were trending downwards: break and enter dwelling (down 6.5%), break and enter non-dwelling (down 9.8%), steal from person (down 8.3%) and fraud (down 4.8%).

The NSW graphs for rates of violent and property offences are on page 7 of the report. For violent offences using the 12-month moving average (light grey line) we can see a downward path from 2012, which has stabilised over the last 5 years. However, the trend tests shown in Table 1.1 indicate that several NSW Statistical Areas are still experiencing significant downward trends in violent crime. The property offences graph using the 6-month moving average (light grey line) indicates a strong downward path from 2000 to 2010, after which there are further declines but at a slower rate. Table 1.1 showing trend tests on the levels of property offences indicates a significant decrease over the last five years.

Dr Don Weatherburn

March 2018

CONTENTS

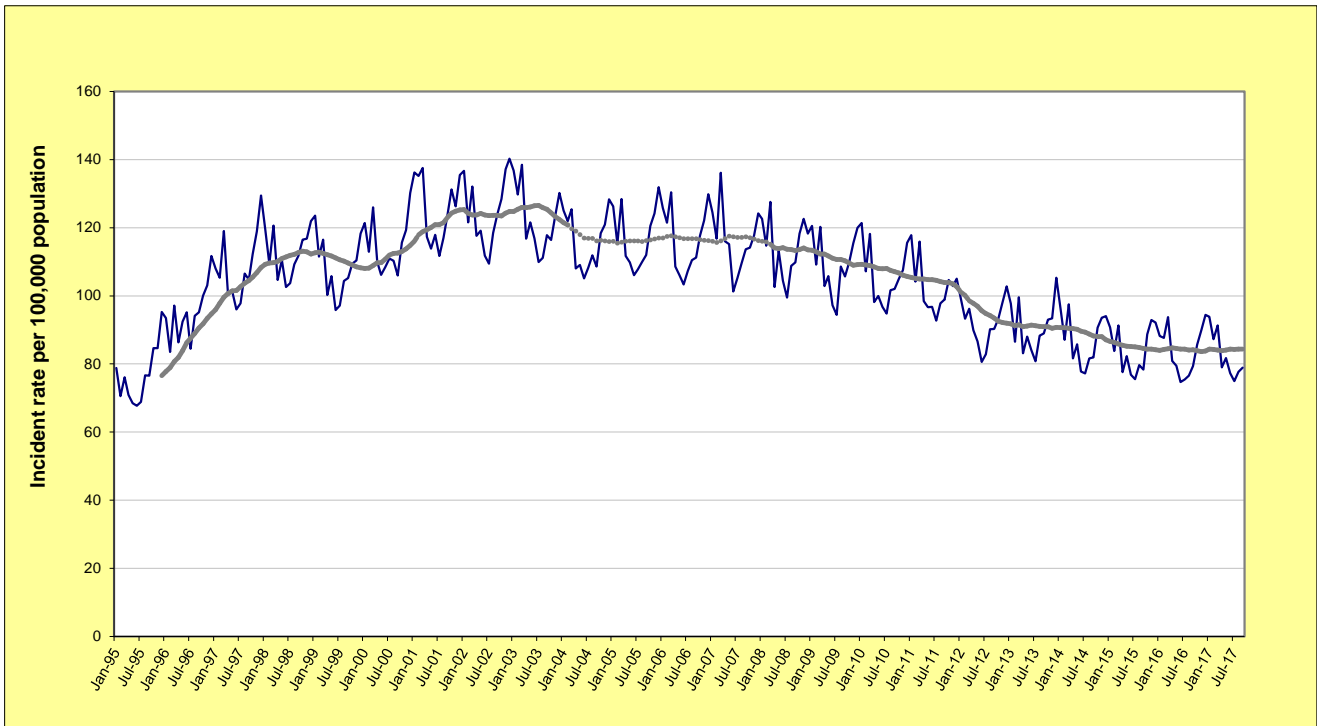
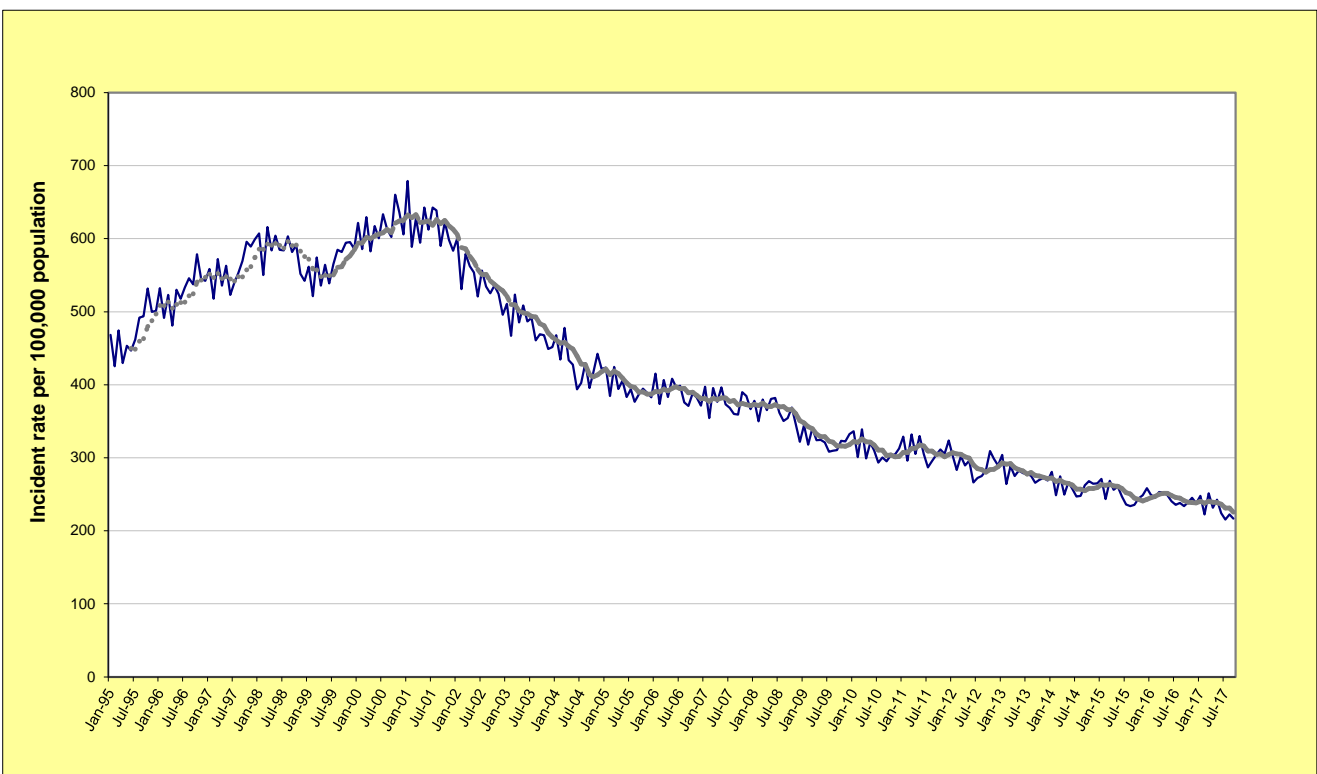
SECTION 1:	OVERVIEW OF TRENDS IN VIOLENT AND PROPERTY CRIME	. . . 5
Figure 1.1	NSW long-term trend in violent crime	. . . 7
Figure 1.2	NSW long-term trend in property crime	. . . 7
Table 1.1	Trends in violent and property offences, over the 60 months to December 2017, NSW Statistical Areas (SAs) and NSW	. . . 8
Table 1.2	Trends in violent and property offences, over the 60 months to December 2017, NSW Statistical Areas (SAs) and NSW	. . . 9
Table 1.3	Trends in violent and property offences, over the 60 months to December 2017, NSW Local Government Areas (LGAs)	. . . 10
SECTION 2:	OVERVIEW OF TRENDS IN RECORDED CRIME, BY OFFENCE TYPE	. . . 13
Table 2.1	Trends in recorded criminal incidents for major offences, over the 60 months to December 2017, NSW	. . . 14
Table 2.2	Periodic trends in recorded criminal incidents for major offences over the 60 months to December 2017, NSW	. . . 15
Table 2.3	Number and trends in recorded criminal incidents for 62 offences, over the 24 months to December 2017, NSW	. . . 16
Table 2.4	Number and outcome of 24-month trend for major offences, NSW Local Government Areas (LGAs), all reports 2009 to December 2017	17
Figure 2.1A	Number of NSW LGAs with significant upward trends for major offences in the 24-month periods to December 2016 and December 2017	. . . 18
Figure 2.1B	Number of NSW LGAs with significant downward trends for major offences in the 24-month periods to December 2016 and December 2017	. . . 18
SECTION 3:	TRENDS, RATE COMPARISONS AND RECORDED CRIMINAL INCIDENTS FOR MAJOR OFFENCES, NSW REGIONS AND LGAS	. . . 19
Table 3.1A	Trends in recorded criminal incidents for major offences, over the 24 months to December 2017, NSW SAs	. . . 20
Table 3.1B	Ratio to NSW rate of recorded criminal incidents per 100,000 population for major offences, over the 12 months to December 2017, NSW SAs	. . . 20
Table 3.1C	Number of recorded criminal incidents for major offences, over the 12 months to December 2017, NSW SAs	. . . 21
Table 3.1D	Number of recorded criminal incidents for major offences, over the 12 months to December 2016, NSW SAs	. . . 21
Table 3.2A	Trends in recorded criminal incidents for major offences, over the 24 months to December 2017, Greater Sydney SAs	. . . 22
Table 3.2B	Ratio to NSW rate of recorded criminal incidents per 100,000 population for major offences, over the 12 months to December 2017, Greater Sydney SAs	. . . 22
Table 3.2C	Number of recorded criminal incidents for major offences, over the 12 months to December 2017, Greater Sydney SAs	. . . 23
Table 3.2D	Number of recorded criminal incidents for major offences, over the 12 months to December 2016, Greater Sydney SAs	. . . 23
Table 3.3A	Trends in recorded criminal incidents for major offences, over the 24 months to December 2017, NSW LGAs	. . . 24
Table 3.3B	Ratio to NSW rate of recorded criminal incidents per 100,000 population for major offences, over the 12 months to December 2017, NSW LGAs	. . . 26

Table 3.3C	Number of recorded criminal incidents for major offences, over the 12 months to December 2017, NSW LGAs	. . . 28
Table 3.3D	Number of recorded criminal incidents for major offences, over the 12 months to December 2016, NSW LGAs	. . . 30
SECTION 4:	METHODS OF PROCEEDINGS AGAINST ALLEGED OFFENDERS	. . . 33
Figure 4.1	Trends in referral methods for alleged offenders proceeded against to court over the 24 months to December 2017, NSW	34
Table 4.1	Number, percentage and trend in alleged offenders proceeded against by NSW Police by method of legal proceedings over the 24 months to December 2017, NSW	. . . 35
Table 4.2	Number, percentage and trend in alleged offenders proceeded against to court by NSW Police for major offences over the 24 months to December 2017, NSW	36
SECTION 5:	CLEARED CRIMINAL INCIDENTS AND WHETHER LEGAL PROCEEDINGS COMMENCED FOR SELECTED OFFENCES	. . . 37
Table 5.1	Number of recorded criminal incidents for selected offences by whether legal proceedings commenced in 30 days of reporting over the 24 months to November 2017, NSW	. . . 38
Table 5.2	Number of recorded criminal incidents for selected offences by whether legal proceedings commenced in 90 days of reporting over the 24 months to September 2017, NSW	39
Figure 5.1	Percentage of recorded criminal incidents for selected offences where legal proceedings commenced within 30 and 90 days, over the 12 months to September 2017, NSW	. . . 40
APPENDICES		41
	APPENDIX 1: TRENDS IN RECORDED CRIMINAL INCIDENTS IN NSW	. . . 42
	APPENDIX 2: DEFINITIONS AND EXPLANATORY NOTES	. . . 43
	APPENDIX 3: BOCSAR OFFENCES MAPPED TO POLICE INCIDENT CATEGORY	. . . 46
	APPENDIX 4: NSW & GREATER SYDNEY STATISTICAL AREA MAPS	. . . 52
	APPENDIX 5: LGAS IN GREATER SYDNEY STATISTICAL AREAS	. . . 54
	APPENDIX 5: LGAS IN NSW REGIONAL STATISTICAL AREAS	. . . 55

SECTION 1:

OVERVIEW OF TRENDS

IN VIOLENT AND PROPERTY CRIME

FIGURE 1.1: NSW LONG-TERM TREND IN VIOLENT OFFENCES***FIGURE 1.2: NSW LONG-TERM TREND IN PROPERTY OFFENCES****

* **Violent offences** include: murder, attempted murder, manslaughter, assault - domestic violence related, assault - non-domestic violence related, assault police, robbery without a weapon, robbery with a firearm, robbery with a weapon not a firearm, sexual assault and indecent assault / act of indecency / other sexual offences.

** **Property offences** include: break and enter dwelling, break and enter non-dwelling, motor vehicle theft, steal from motor vehicle, steal from retail store, steal from dwelling, steal from person, stock theft, other theft and fraud.

For further explanation of **violent offences** and **property offences**, see page 42, Note [7].

**TABLE 1.1: TRENDS[^] IN RECORDED CRIMINAL INCIDENTS, VIOLENT AND PROPERTY OFFENCES
OVER THE 60 MONTHS TO DECEMBER 2017, NSW STATISTICAL AREAS (SAs) AND NSW**

NSW Statistical Area	Violent Offences*			Property Offences**		
	Annual percentage change over the last 24 months	Average annual percentage change over the last 60 months	Ratio # to NSW rate	Annual percentage change over the last 24 months	Average annual percentage change over the last 60 months	Ratio # to NSW rate
Greater Sydney	Stable	Stable	0.9	-3.2%	-4.1%	0.9
Capital Region	Stable	Stable	0.9	Stable	Stable	0.7
Central West	Stable	Stable	1.4	-19.3%	-4.7%	1.1
Coffs Harbour - Grafton	Stable	Stable	1.4	Stable	Stable	1.1
Far West and Orana	Stable	-3.8%	2.3	-21.2%	Stable	1.8
Hunter Valley excluding Newcastle	Stable	Stable	1.2	-11.0%	Stable	1.2
Illawarra	Stable	-3.2%	0.9	-7.2%	-3.8%	0.9
Mid North Coast	Stable	Stable	1.2	Stable	Stable	1.1
Murray	Stable	-3.2%	1.1	Stable	Stable	1.2
New England and North West	Stable	Stable	1.7	Stable	Stable	1.5
Newcastle and Lake Macquarie	Stable	Stable	1.2	Stable	Stable	1.4
Richmond - Tweed	Stable	-2.9%	1.1	-13.3%	-4.4%	0.9
Riverina	Stable	Stable	1.4	Stable	2.6%	1.4
Southern Highlands and Shoalhaven	Stable	-3.6%	0.9	-13.8%	-6.5%	0.7
NSW	Stable	Stable	1.0	-4.7%	-3.3%	1.0

[^] For further explanation of trend results, see page 42, Notes [5] and [6].

* **Violent offences** include: murder, assault - domestic violence related, assault - non-domestic violence related, assault police, robbery without a weapon, robbery with a firearm, robbery with a weapon not a firearm, sexual assault and indecent assault / act of indecency / other sexual offences.

** **Property offences** include: break and enter dwelling, break and enter non-dwelling, motor vehicle theft, steal from motor vehicle, steal from retail store, steal from dwelling, steal from person, stock theft, other theft and fraud.

For further explanation of violent offences and property offences, see page 42, Note [7].

For further explanation of rate calculation populations and the ratio to NSW rate, see page 42, Footnote 2 and Note [8].

**TABLE 1.2: TRENDS[^] IN RECORDED CRIMINAL INCIDENTS, VIOLENT AND PROPERTY OFFENCES
OVER THE 60 MONTHS TO DECEMBER 2017, GREATER SYDNEY STATISTICAL AREAS (SAs)**

Greater Sydney Statistical Area	Violent Offences*			Property Offences**		
	Annual percentage change over the last 24 months	Average annual percentage change over the last 60 months	Ratio # to NSW rate	Annual percentage change over the last 24 months	Average annual percentage change over the last 60 months	Ratio # to NSW rate
Baulkham Hills and Hawkesbury	Stable	Stable	0.4	Stable	-1.3%	0.5
Blacktown	Stable	Stable	1.3	Stable	Stable	1.3
Central Coast	Stable	3.2%	1.2	-9.9%	Stable	0.9
City and Inner South	Stable	Stable	1.9	-9.0%	-7.9%	2.1
Eastern Suburbs	Stable	2.0%	0.7	Stable	-5.8%	0.9
Inner South West	Stable	Stable	0.7	-3.2%	-7.8%	0.7
Inner West	Stable	Stable	0.6	-10.5%	-4.5%	0.9
North Sydney and Hornsby	Stable	Stable	0.4	Stable	Stable	0.7
Northern Beaches	Stable	-2.3%	0.5	Stable	-3.8%	0.6
Outer South West	Stable	Stable	1.0	-13.1%	-5.1%	0.8
Outer West and Blue Mountains	Stable	Stable	1.2	Stable	Stable	1.0
Parramatta	Stable	-2.2%	0.9	Stable	-4.1%	1.0
Ryde	Stable	Stable	0.4	16.8%	Stable	0.7
South West	Stable	Stable	0.9	-4.4%	-4.2%	0.9
Sutherland	Stable	3.1%	0.6	Stable	-4.9%	0.6

[^] For further explanation of trend results, see page 42, Notes [5] and [6].

* **Violent offences** include: murder, assault - domestic violence related, assault - non-domestic violence related, assault police, robbery without a weapon, robbery with a firearm, robbery with a weapon not a firearm, sexual assault and indecent assault / act of indecency / other sexual offences.

** **Property offences** include: break and enter dwelling, break and enter non-dwelling, motor vehicle theft, steal from motor vehicle, steal from retail store, steal from dwelling, steal from person, stock theft, other theft and fraud.

For further explanation of violent offences and property offences, see page 42, Note [7].

For further explanation of rate calculation populations and the ratio to NSW rate, see page 42, Footnote 2 and Note [8].

TABLE 1.3: TRENDS^a IN RECORDED CRIMINAL INCIDENTS, VIOLENT AND PROPERTY OFFENCES, OVER THE 60 MONTHS TO DECEMBER 2017, NSW LOCAL GOVERNMENT AREAS (LGAs)

NSW LGAs	Violent Offences*			Property Offences*		
	Annual percentage change over the last 24 months	Average annual percentage change over the last 60 months	Ratio # to NSW rate	Annual percentage change over the last 24 months	Average annual percentage change over the last 60 months	Ratio # to NSW rate
Albury	ns	ns	1.5	ns	ns	1.6
Armidale Regional	ns	-2.6	1.6	-26.7	ns	1.6
Ballina	ns	-3.5	0.9	ns	ns	1.0
Balranald	ns	-9.3	.	ns	-14.8	.
Bathurst Regional	ns	ns	1.5	-23.9	ns	1.1
Bayside	ns	4.1	0.7	ns	-7.1	0.8
Bega Valley	ns	ns	0.9	ns	ns	0.6
Bellingen	ns	ns	0.8	ns	-5.7	0.6
Berrigan	ns	ns	0.4	ns	ns	0.6
Blacktown	ns	ns	1.3	ns	ns	1.3
Bland	ns	ns	0.9	ns	ns	0.6
Blayney	ns	ns	1.1	ns	ns	0.6
Blue Mountains	ns	ns	0.8	-10.7	-6.5	0.5
Bogan	ns	ns	.	ns	ns	.
Bourke	ns	-7.5	.	-27.3	ns	.
Brewarrina	ns	-12.2	.	ns	ns	.
Broken Hill	ns	ns	2.2	ns	ns	1.6
Burwood	ns	ns	0.7	-14.5	-8.7	1.2
Byron	ns	-4.7	1.4	ns	ns	1.3
Cabonne	ns	-6.3	0.5	ns	-8.7	0.5
Camden	22.9	11.4	0.8	ns	ns	0.6
Campbelltown	-10.4	-5.0	1.2	-13.0	-5.8	1.0
Canada Bay	ns	ns	0.4	ns	-1.9	0.8
Canterbury-Bankstown	ns	ns	0.8	-3.8	-6.6	0.8
Carrathool	ns	ns	.	ns	6.8	.
Central Coast	ns	3.2	1.2	-9.9	ns	0.9
Central Darling	ns	-9.8	.	ns	ns	.
Cessnock	ns	ns	1.3	-7.5	ns	1.5
Clarence Valley	ns	ns	1.2	-10.1	-3.5	1.1
Cobar	ns	ns	2.1	ns	-10.7	1.2
Coffs Harbour	ns	ns	1.7	ns	ns	1.1
Coolamon	ns	ns	0.8	ns	ns	0.6
Coonamble	ns	-7.5	2.8	-10.1	ns	2.8
Cootamundra-Gundagai	ns	ns	1.1	ns	ns	0.9
Cowra	ns	ns	1.5	ns	ns	1.2
Cumberland	ns	-2.9	0.9	ns	-4.9	0.9
Dubbo Regional	ns	ns	1.9	-28.7	ns	2.0
Dungog	ns	ns	0.7	ns	ns	0.4
Edward River	ns	ns	1.2	ns	3.1	1.0
Eurobodalla	ns	ns	1.2	-17.7	ns	0.9
Fairfield	ns	ns	0.9	-2.3	-6.5	0.8
Federation	ns	-10.4	0.7	ns	-3.7	0.8
Forbes	ns	ns	1.5	ns	ns	1.3
Georges River	ns	ns	0.6	ns	-8.7	0.6
Gilgandra	ns	ns	1.7	ns	-14.6	1.0
Glen Innes Severn	ns	17.0	2.1	-21.6	ns	1.3
Goulburn Mulwaree	ns	ns	1.1	ns	5.9	0.9
Greater Hume Shire	ns	ns	0.5	ns	ns	0.6
Griffith	-15.6	ns	1.5	ns	ns	1.4
Gunnedah	ns	ns	1.4	ns	-9.3	1.1
Gwydir	ns	ns	0.8	ns	ns	0.6
Hawkesbury	ns	-4.5	0.9	-24.8	-8.4	0.7
Hay	ns	ns	.	ns	ns	.
Hilltops	ns	ns	1.5	ns	ns	0.7
Hornsby	ns	ns	0.4	ns	ns	0.6
Hunters Hill	ns	ns	0.5	ns	ns	0.6
Inner West	ns	-2.5	0.7	-10.0	-6.7	0.9
Inverell	ns	ns	1.6	ns	5.7	1.2
Junee	-61.9	ns	0.6	ns	ns	0.7
Kempsey	ns	ns	1.8	ns	ns	1.6
Kiama	ns	ns	0.4	ns	ns	0.7
Ku-ring-gai	ns	ns	0.2	ns	ns	0.4
Kyogle	ns	ns	1.0	ns	ns	0.6
Lachlan	ns	ns	2.0	ns	-6.3	1.3
Lake Macquarie	ns	ns	0.9	-8.3	-2.9	1.0

TABLE 1.3: TRENDS^a IN RECORDED CRIMINAL INCIDENTS, VIOLENT AND PROPERTY OFFENCES, OVER THE 60 MONTHS TO DECEMBER 2017, NSW LOCAL GOVERNMENT AREAS (LGAs)

NSW LGAs	Violent Offences*			Property Offences*		
	Annual percentage change over the last 24 months	Average annual percentage change over the last 60 months	Ratio [#] to NSW rate	Annual percentage change over the last 24 months	Average annual percentage change over the last 60 months	Ratio [#] to NSW rate
Lane Cove	ns	ns	0.3	29.9	ns	0.6
Leeton	ns	ns	1.6	ns	ns	1.1
Lismore	ns	ns	1.4	-15.8	ns	1.0
Lithgow	ns	ns	1.3	-17.9	-6.1	1.1
Liverpool	ns	ns	1.0	-6.9	-3.2	1.1
Liverpool Plains	-23.4	ns	1.2	ns	5.7	0.9
Lockhart	.	.	0.9	-40.0	ns	0.4
Lord Howe Island
Maitland	ns	2.7	1.2	ns	4.2	1.3
Mid-Coast	ns	ns	1.2	ns	-3.5	1.1
Mid-Western Regional	ns	ns	1.2	ns	-3.3	0.8
Moree Plains	ns	ns	3.8	ns	ns	4.2
Mosman	ns	ns	0.4	ns	-2.1	0.5
Murray River	ns	-12.5	0.3	-37.1	ns	0.7
Murrumbidgee	ns	ns	1.2	ns	ns	0.7
Muswellbrook	ns	ns	1.5	-20.9	-5.6	1.3
Nambucca	ns	ns	1.4	10.5	ns	1.2
Narrabri	ns	ns	1.4	ns	-6.0	1.1
Narrandera	ns	ns	1.3	ns	ns	2.1
Narramine	ns	ns	2.0	-32.4	ns	1.6
Newcastle	ns	ns	1.4	10.2	1.8	1.9
North Sydney	ns	ns	0.6	ns	-4.1	0.8
Northern Beaches	ns	-2.3	0.5	ns	-3.8	0.6
Oberon	ns	ns	0.8	-11.3	ns	0.6
Orange	ns	-3.3	1.6	-25.8	-6.1	1.4
Parkes	ns	ns	1.5	-28.9	ns	1.0
Parramatta	ns	-2.2	0.8	ns	-2.3	1.1
Penrith	ns	ns	1.3	ns	ns	1.2
Port Macquarie-Hastings	-11.8	-7.0	0.8	ns	ns	0.8
Port Stephens	ns	ns	1.0	-21.3	-9.2	0.9
Queanbeyan-Palerang Regional	ns	ns	0.7	ns	ns	0.8
Randwick	ns	ns	0.8	-8.5	-6.3	0.8
Richmond Valley	ns	ns	1.6	-18.8	-6.7	1.0
Ryde	ns	ns	0.5	16.6	ns	0.8
Shellharbour	ns	ns	0.8	ns	-5.9	0.8
Shoalhaven	ns	-4.3	1.0	ns	-6.7	0.8
Singleton	39.2	ns	1.2	ns	-5.1	1.0
Snowy Monaro Regional	ns	ns	0.9	ns	-13.3	0.5
Snowy Valleys	ns	ns	1.2	ns	13.7	1.3
Strathfield	ns	ns	0.8	ns	-3.5	1.2
Sutherland Shire	ns	3.0	0.6	ns	-4.9	0.6
Sydney	ns	ns	2.4	-10.3	-8.2	2.6
Tamworth Regional	ns	ns	1.6	ns	2.4	1.5
Temora	ns	ns	0.9	ns	ns	0.7
Tenterfield	ns	ns	1.4	-28.2	ns	1.0
The Hills Shire	ns	ns	0.4	ns	ns	0.6
Tweed	ns	-3.2	0.8	ns	-6.7	0.7
Unincorporated Far West
Upper Hunter Shire	ns	ns	0.7	ns	ns	0.7
Upper Lachlan Shire	ns	ns	0.4	55.9	ns	0.5
Uralla	ns	ns	0.6	ns	ns	0.5
Wagga Wagga	ns	ns	1.5	ns	ns	1.7
Walcha	ns	ns	1.4	ns	ns	0.5
Walgett	ns	-7.8	4.2	ns	ns	2.2
Warren	ns	ns	.	ns	ns	.
Warrumbungle Shire	ns	ns	1.3	ns	-6.9	0.8
Waverley	ns	ns	0.9	ns	-4.4	1.2
Weddin	ns	ns	0.7	ns	ns	0.5
Wentworth	ns	ns	2.2	ns	ns	1.4
Willoughby	ns	ns	0.4	ns	ns	0.9
Wingecarribee	ns	ns	0.6	-20.1	ns	0.5
Wollondilly	ns	ns	0.6	ns	ns	0.4
Wollongong	ns	-3.3	0.9	-7.0	-3.5	1.0
Woollahra	ns	ns	0.5	ns	-5.6	0.7
Yass Valley	ns	ns	0.4	ns	ns	0.4
NSW	ns	ns	1.0	-4.7	-3.3	1.0

^a For further explanation of trend results, see page 42, Notes [5] and [6].

* For further explanation of violent offences and property offences, see page 42, Note [7].

[#] For further explanation of rate calculation populations and the ratio to NSW rate, see page 42, Footnote 2 and Note [8].

Sydney LGA can be considered a special case since the population used to calculate the rate is much lower than the population using the area for work and entertainment. This will be reflected in higher incident rates.

SECTION 2:

**OVERVIEW OF TRENDS
IN RECORDED CRIME
BY OFFENCE TYPE
NSW**

**TABLE 2.1: TRENDS[^] IN RECORDED CRIMINAL INCIDENTS FOR MAJOR OFFENCES
OVER THE 60 MONTHS TO DECEMBER 2017, NSW**

<i>Offence category</i>	<i>Trend result and annual percentage change over the last 24 months</i>	<i>Trend result and average annual percentage change over the last 60 months</i>
Murder *	Stable	Down by 12.6%
Domestic violence related assault	Stable	Stable
Non-domestic violence related assault	Stable	Stable
Sexual assault	Stable	Up by 5.3%
Indecent assault, act of indecency and other sexual offences	Stable	Up by 3.4%
Robbery without a weapon	Stable	Down by 12.5%
Robbery with a firearm	Stable	Down by 20.5%
Robbery with a weapon not a firearm	Stable	Down by 11.7%
Break and enter dwelling	Down by 6.5%	Down by 5.8%
Break and enter non-dwelling	Down by 9.8%	Down by 7.8%
Motor vehicle theft	Stable	Down by 4.7%
Steal from motor vehicle	Stable	Down by 3.4%
Steal from retail store	Up by 3.9%	Up by 2.9%
Steal from dwelling	Stable	Down by 2.6%
Steal from person	Down by 8.3%	Down by 10.8%
Fraud	Down by 4.8%	Stable
Malicious damage to property	Stable	Down by 5.4%

[^] For further explanation of trend results, see page 42, Notes [5] and [6].

* For murder, the trend test is applied to the monthly number of recorded victims rather than criminal incidents.

TABLE 2.2: PERIODIC TRENDS[^] IN RECORDED CRIMINAL INCIDENTS FOR MAJOR OFFENCES, OVER THE 60 MONTHS TO DECEMBER 2017, NSW

Offence category	Trend result and annual percentage change				
	Jan 2012 - Dec 2013	Jan 2013 - Dec 2014	Jan 2014 - Dec 2015	Jan 2015 - Dec 2016	Jan 2016 - Dec 2017
Murder *	Stable	Stable	Stable	Stable	Stable
Domestic violence related assault	Stable	Stable	Stable	Stable	Stable
Non-domestic violence related assault	Stable	Stable	Stable	Stable	Stable
Sexual assault	Stable	5.5%	Stable	Stable	Stable
Indecent assault, act of indecency and other sexual offences	11.4%	Stable	Stable	Stable	Stable
Robbery without a weapon	-11.4%	-21.5%	-18.9%	-13.1%	Stable
Robbery with a firearm	Stable	Stable	-40.5%	Stable	Stable
Robbery with a weapon not a firearm	Stable	-14.0%	-20.5%	-12.9%	Stable
Break and enter dwelling	-13.1%	Stable	-6.9%	-6.1%	-6.5%
Break and enter non-dwelling	-10.3%	-12.4%	-6.9%	Stable	-9.8%
Motor vehicle theft	-12.8%	Stable	Stable	-6.9%	Stable
Steal from motor vehicle	-4.9%	-4.6%	-6.5%	Stable	Stable
Steal from retail store	Stable	-5.8%	7.2%	6.6%	3.9%
Steal from dwelling	Stable	3.5%	Stable	Stable	Stable
Steal from person	-11.5%	-14.4%	Stable	-13.3%	-8.3%
Fraud	15.2%	Stable	Stable	-2.3%	-4.8%
Malicious damage to property	-7.9%	-10.6%	Stable	Stable	Stable

[^] For further explanation of trend results, see page 42, Notes [5] and [6].

* For murder, the trend test is applied to the monthly number of recorded victims rather than criminal incidents.

TABLE 2.3: NUMBER AND TRENDS[^] IN RECORDED CRIMINAL INCIDENTS FOR 62 OFFENCES OVER THE 24 MONTHS TO DECEMBER 2017, NSW

Offence Category		Number of recorded criminal incidents		Trend [^] over the last 24 months	
		over the 12 months to December 2016	over the 12 months to December 2017	Trend test result	Percentage change
Homicide	Murder*	70	52	Stable	
	Attempted murder	28	17	.	
	Murder accessory, conspiracy	3	3	.	
	Manslaughter*	6	7	.	
Assault	Domestic violence related assault	29,145	28,356	Stable	
	Non-domestic violence related assault	31,755	32,015	Stable	
	Assault Police	2,325	2,325	Stable	
Sexual offences	Sexual assault	5,208	5,804	Stable	
	Indecent assault, act of indecency and other sexual offences	6,986	7,389	Stable	
Abduction and kidnapping		238	215	Stable	
Robbery	Robbery without a weapon	1,364	1,448	Stable	
	Robbery with a firearm	164	130	Stable	
	Robbery with a weapon not a firearm	829	847	Stable	
Blackmail and extortion		111	87	Stable	
Intimidation, stalking and harassment		30,618	30,411	Stable	
Other offences against the person		1,265	1,308	Stable	
Theft	Break and enter dwelling	29,713	27,776	Down	-6.5%
	Break and enter non-dwelling	11,708	10,564	Down	-9.8%
	Receiving or handling stolen goods	8,474	7,363	Down	-13.1%
	Motor vehicle theft	13,127	13,173	Stable	
	Steal from motor vehicle	40,479	39,035	Stable	
	Steal from retail store	23,542	24,457	Up	3.9%
	Steal from dwelling	21,347	19,503	Stable	
	Steal from person	4,961	4,547	Down	-8.3%
	Stock theft	519	461	Stable	
	Fraud	50,847	48,397	Down	-4.8%
	Other theft	29,642	27,371	Down	-7.7%
Arson		5,599	5,862	Stable	
Malicious damage to property		62,815	61,039	Stable	
Drug offences	Possession and/or use of cocaine	1,327	1,902	Up	43.3%
	Possession and/or use of narcotics	921	943	Stable	
	Possession and/or use of cannabis	18,844	18,130	Stable	
	Possession and/or use of amphetamines	7,475	6,493	Down	-13.1%
	Possession and/or use of ecstasy	2,610	2,673	Stable	
	Possession and/or use of other drugs	4,216	4,263	Stable	
	Dealing, trafficking in cocaine	455	746	Up	64.0%
	Dealing, trafficking in narcotics	449	340	Down	-24.3%
	Dealing, trafficking in cannabis	897	600	Down	-33.1%
	Dealing, trafficking in amphetamines	2,342	1,694	Down	-27.7%
	Dealing, trafficking in ecstasy	665	675	Stable	
	Dealing, trafficking in other drugs	286	324	Stable	
	Cultivating cannabis	1,195	1,053	Stable	
	Manufacture drug	58	59	Stable	
	Importing drugs	59	74	Stable	
	Other drug offences	5,369	5,077	Stable	
Prohibited and regulated weapons offences		12,759	12,392	Stable	
Disorderly conduct	Trespass	10,268	9,801	Stable	
	Offensive conduct	5,517	5,115	Stable	
	Offensive language	3,742	3,239	Down	-13.4%
	Criminal intent	2,301	2,192	Stable	
Betting and gaming offences		188	74	Down	-60.6%
Liquor offences		11,000	11,037	Stable	
Pornography offences		580	577	Stable	
Prostitution offences		51	72	Stable	
Against justice procedures	Escape custody	200	168	Stable	
	Breach Apprehended Violence Order	15,524	14,702	Stable	
	Breach bail conditions	42,322	41,660	Stable	
	Fail to appear	742	578	Down	-22.1%
	Resist or hinder officer	6,436	6,163	Stable	
	Other offences against justice procedures	580	554	Stable	
Transport regulatory offences		120,030	129,633	Up	8.0%
Other offences		15,228	14,312	Stable	

[^] For further explanation of trend results, see page 42, Notes [5] and [6].

* For murder and manslaughter incidents, the trend test is applied to the monthly number of recorded victims rather than criminal incidents.

TABLE 2.4: NUMBER AND OUTCOME[^] OF 24-MONTH TREND TESTS FOR MAJOR OFFENCES, NSW LOCAL GOVERNMENT AREAS (LGAs), ALL REPORTS 2009 TO DECEMBER 2017

Year & Quarter	Final month for 24-month trend test	Number of LGAs	Number of trend tests	Stable trends (%)	Downward trends (%)	Upward trends (%)
2009	March	130	1,247	84.9	7.8	7.3
	June	130	1,256	83.8	10.5	5.7
	September	130	1,249	82.2	13.1	4.7
	December	130	1,262	83.2	12.4	4.4
2010	March	130	1,255	82.1	11.8	6.1
	June	130	1,254	83.0	12.4	4.6
	September	130	1,264	81.4	14.0	4.6
	December	130	1,260	86.4	9.0	4.5
2011	March	130	1,250	86.0	8.2	5.8
	June	130	1,244	86.4	8.8	4.7
	September	130	1,251	84.9	11.5	3.6
	December	130	1,241	85.9	9.1	5.0
2012	March	130	1,250	86.2	5.7	8.2
	June	130	1,236	86.7	7.3	6.0
	September	130	1,240	85.9	9.5	4.6
	December	130	1,246	85.6	7.9	6.6
2013	March	130	1,238	85.3	6.9	7.8
	June	130	1,232	84.9	8.6	6.5
	September	130	1,240	83.6	10.9	5.5
	December	130	1,236	84.4	11.1	4.5
2014	March	130	1,228	84.0	9.9	6.1
	June	130	1,228	82.6	13.7	3.7
	September	130	1,227	80.0	17.2	2.9
	December	130	1,227	85.7	10.0	4.2
2015	March	130	1,224	86.2	9.0	4.8
	June	130	1,229	86.7	9.6	3.7
	September	130	1,220	86.1	10.9	3.0
	December	130	1,223	87.7	8.1	4.3
2016	March	130	1,225	85.8	6.2	8.0
	June	130	1,220	83.8	9.3	6.9
	September	130	1,220	83.4	11.5	5.1
	December	130	1,218	87.2	7.2	5.6
2017	March	130	1,225	88.0	5.6	6.4
	June	130	1,216	88.7	5.9	5.4
	September	130	1,223	84.9	11.1	4.0
	December	130	1,223	86.9	9.2	3.9

[^] This table summarises the aggregate outcomes of statistical tests for significant upward or downward trends in the number of recorded criminal incidents in major offence categories over a 24-month period across all NSW LGAs with a population of 3,000 or more. The trend test used is Kendall's rank-order correlation test. A trend test was not performed if there were fewer than 20 incidents in either of the two years for the period in question, hence no trend tests for **murder** were calculated for this table. These tests were carried out on 16 major offence categories (**assault** incidents separated into **domestic violence related** and **non-domestic violence related**). **Assault Police** incidents have been recorded separately from the two major assault series from 2008 onwards.

FIGURE 2.1A: NUMBER OF NSW LGAs WITH SIGNIFICANT UPWARD TRENDS[^], MAJOR OFFENCES, JAN 15 TO DEC 16 and JAN 16 TO DEC 17

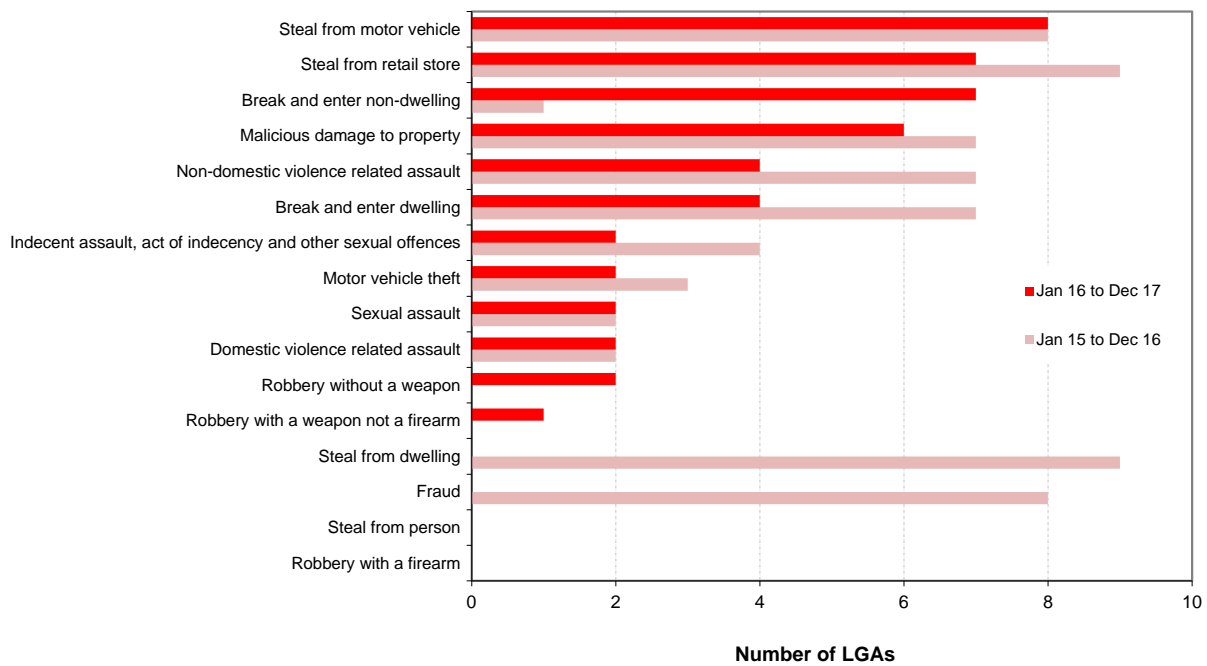
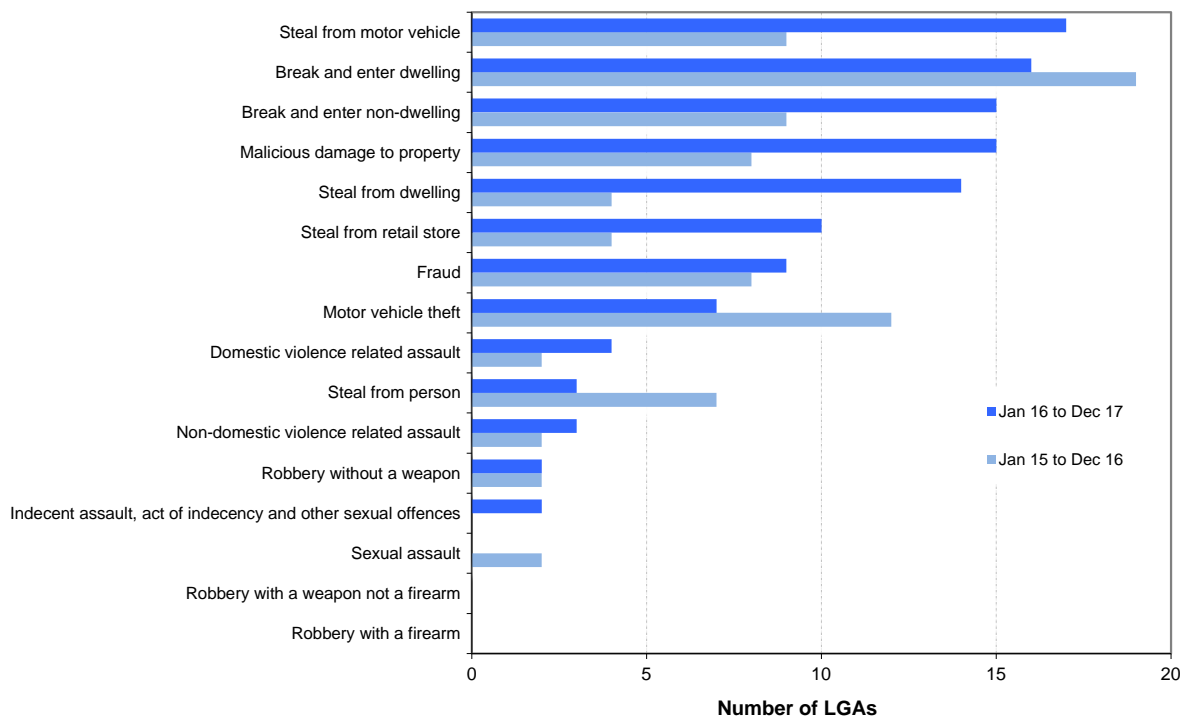


FIGURE 2.1B: NUMBER OF NSW LGAs WITH SIGNIFICANT DOWNWARD TRENDS[^], MAJOR OFFENCES, JAN 15 TO DEC 16 and JAN 16 TO DEC 17



[^] For further explanation of trend results, see page 42, Notes [5] and 6.

SECTION 3:

**TRENDS, RATE COMPARISONS AND
RECORDED CRIMINAL INCIDENTS
FOR MAJOR OFFENCES
NSW REGIONS AND LGAS**

TABLE 3.1A: TRENDS[^] IN RECORDED CRIMINAL INCIDENTS FOR MAJOR OFFENCES OVER THE 24 MONTHS TO DECEMBER 2017, NSW SAs

NSW Statistical Area	Murder *	Domestic violence related assault	Non-domestic violence related assault	Sexual assault	Indecent assault, act of indecency and other sexual offences	Robbery without a weapon	Robbery with a firearm	Robbery with a weapon not a firearm	Break and enter dwelling	Break and enter non-dwelling	Motor vehicle theft	Steal from motor vehicle	Steal from retail store	Steal from dwelling	Steal from person	Fraud	Malicious damage to property
Greater Sydney Capital Region	ns	ns	ns	14.8	ns	ns	ns	ns	-3.9	-8.9	ns	ns	8.1	-8.2	-9.1	-5.3	ns
Central West	.	ns	ns	ns	ns	.	.	.	-19.3	-30.8	ns	-21.7	ns	ns	ns	ns	ns
Coffs Harbour - Grafton	.	ns	ns	ns	ns	.	.	ns	ns	ns	ns	ns	ns	ns	ns	ns	-8.0
Far West and Orana	.	ns	ns	ns	ns	.	.	.	-21.5	-22.7	ns	-26.5	-16.8	-24.9	ns	ns	ns
Hunter Valley excluding Newcastle	.	ns	ns	ns	ns	ns	.	ns	-15.6	ns	ns	-15.3	ns	ns	ns	ns	ns
Illawarra	.	ns	ns	ns	ns	ns	.	ns	-9.0	-38.5	ns	-9.8	ns	ns	ns	ns	ns
Mid North Coast	.	ns	ns	ns	ns	.	.	ns	ns	ns	ns	ns	19.4	ns	ns	ns	ns
Murray	.	ns	ns	ns	ns	.	.	ns	ns	-19.3	25.8	ns	ns	ns	ns	ns	ns
New England and North West	.	ns	ns	ns	ns	54.2	.	ns	ns	ns	ns	ns	ns	ns	ns	ns	ns
Newcastle and Lake Macquarie	.	ns	ns	ns	ns	-50.0	.	ns	ns	16.9	ns	ns	ns	ns	ns	ns	ns
Richmond - Tweed	.	ns	ns	ns	ns	ns	.	ns	ns	ns	ns	ns	ns	ns	ns	-21.4	ns
Riverina	.	ns	ns	ns	ns	.	.	ns	ns	20.8	ns	ns	ns	-10.1	ns	ns	ns
Southern Highlands and Shoalhaven	.	ns	ns	ns	ns	.	.	ns	ns	ns	ns	ns	ns	-27.7	.	ns	ns
NSW	ns	ns	ns	ns	ns	ns	ns	ns	-6.5	-9.8	ns	ns	3.9	ns	-8.3	-4.8	ns

[^] For further explanation of **trend results**, see page 42, Notes [5] and [6].

* The trend test for Greater Sydney and NSW on the offence of murder is for the number of victims, not incidents.

TABLE 3.1B: RATIO TO NSW RATE[^] OF RECORDED CRIMINAL INCIDENTS PER 100,000 POPULATION FOR MAJOR OFFENCES OVER THE 12 MONTHS TO DECEMBER 2017, NSW SAs

NSW Statistical Area	Murder *	Domestic violence related assault	Non-domestic violence related assault	Sexual assault	Indecent assault, act of indecency and other sexual offences	Robbery without a weapon	Robbery with a firearm	Robbery with a weapon not a firearm	Break and enter dwelling	Break and enter non-dwelling	Motor vehicle theft	Steal from motor vehicle	Steal from retail store	Steal from dwelling	Steal from person	Fraud	Malicious damage to property
Greater Sydney Capital Region	0.9	0.9	0.9	0.8	0.8	1.2	1.1	1.0	0.8	0.7	0.9	0.9	1.0	0.8	1.2	1.1	0.8
Central West	0.7	0.9	0.9	1.3	1.0	0.3	0.0	0.2	0.7	1.0	0.6	0.8	0.7	0.8	0.2	0.6	1.0
Coffs Harbour - Grafton	2.8	1.4	1.3	1.6	1.6	0.5	0.8	0.7	1.5	1.6	1.1	1.0	0.8	1.4	0.5	0.7	1.5
Far West and Orana	0.0	1.4	1.4	1.5	1.5	0.7	0.4	1.4	1.2	1.8	1.1	0.9	0.7	1.6	0.9	0.8	1.2
Hunter Valley excluding Newcastle	0.0	2.7	2.1	2.4	2.2	0.8	0.5	1.2	3.3	3.1	2.0	2.0	1.5	2.1	0.9	0.8	2.5
Illawarra	0.0	1.4	1.0	1.3	1.3	0.5	1.3	0.8	1.4	1.6	1.7	1.3	0.9	1.4	0.5	0.8	1.3
Mid North Coast	0.0	0.8	0.8	0.9	0.8	1.0	1.2	1.1	0.9	0.9	1.0	1.2	1.2	1.0	0.5	0.6	1.0
Murray	0.7	1.2	1.1	1.5	1.3	0.7	0.6	1.1	1.3	2.2	1.1	0.8	0.9	1.5	0.7	0.7	1.3
New England and North West	2.5	1.1	1.1	1.2	1.4	0.7	1.0	0.2	1.4	1.8	1.2	1.5	0.8	1.5	0.4	0.7	1.4
Newcastle and Lake Macquarie	2.4	1.7	1.7	1.7	1.5	1.1	1.6	1.5	2.4	2.7	1.4	1.5	1.2	2.1	0.7	0.8	2.1
Richmond - Tweed	0.8	1.1	1.1	1.3	1.4	0.6	1.3	1.4	1.2	1.5	1.7	1.8	1.4	1.4	1.1	1.2	1.5
Riverina	2.4	1.0	1.2	1.1	1.1	0.6	1.0	0.6	0.9	1.2	1.1	0.9	0.7	1.1	0.8	0.7	1.1
Southern Highlands and Shoalhaven	1.9	1.5	1.3	1.3	1.1	0.4	0.0	1.3	2.3	2.1	1.4	1.6	1.2	1.7	0.6	0.6	1.6
NSW	0.0	0.8	0.8	1.2	1.2	0.3	0.4	0.5	0.9	1.0	0.7	0.7	0.8	0.8	0.2	0.6	1.0
NSW	1.0	1.0	1.0	1.0	1.0	1.0	1.0	1.0	1.0	1.0	1.0	1.0	1.0	1.0	1.0	1.0	1.0

[^] For further explanation of **rate calculation populations** and the **ratio to NSW rate**, see page 42, Footnote 2 and Note [8].

* The rate calculations on the offence of murder is for the number of victims, not incidents.

TABLE 3.1C: NUMBER OF RECORDED CRIMINAL INCIDENTS FOR MAJOR OFFENCES, OVER THE 12 MONTHS TO DECEMBER 2017, NSW SAs

<i>NSW Statistical Area</i>	Murder *	Domestic violence related assault	Non-domestic violence related assault	Sexual assault	Indecent assault, act of indecency and other sexual offences	Robbery without a weapon	Robbery with a firearm	Robbery with a weapon not a firearm	Break and enter dwelling	Break and enter non-dwelling	Motor vehicle theft	Steal from motor vehicle	Steal from retail store	Steal from dwelling	Steal from person	Fraud	Malicious damage to property
Greater Sydney	31	16,084	17,982	2,971	4,006	1,122	91	567	14,293	4,568	7,346	22,251	15,826	10,228	3,537	35,422	31,652
Capital Region	1	714	834	221	223	14	0	6	595	293	241	896	502	476	22	814	1,853
Central West	4	1,066	1,100	259	316	18	3	15	1,168	461	387	1,066	558	740	66	987	2,555
Coffs Harbour - Grafton	0	732	785	154	202	17	1	21	609	345	259	632	314	550	71	697	1,350
Far West and Orana	0	1,162	1,016	209	242	17	1	15	1,401	487	405	1,198	543	618	62	615	2,296
Hunter Valley excluding Newcastle	0	1,337	1,072	266	347	24	6	24	1,308	591	802	1,757	766	956	75	1,351	2,693
Illawarra	0	925	1,062	213	239	55	6	37	983	386	531	1,767	1,166	758	94	1,151	2,471
Mid North Coast	1	946	945	235	262	30	2	26	984	652	418	909	639	823	83	884	2,236
Murray	2	478	544	108	152	15	2	3	589	293	249	899	312	444	25	548	1,337
New England and North West	3	1,161	1,303	237	269	37	5	31	1,596	686	451	1,365	727	975	73	901	3,021
Newcastle and Lake Macquarie	2	1,520	1,742	370	499	45	8	56	1,641	735	1,067	3,405	1,583	1,290	250	2,793	4,261
Richmond - Tweed	4	877	1,174	211	267	29	4	15	798	388	454	1,131	550	673	118	1,048	2,031
Riverina	2	904	863	155	166	13	0	22	1,329	465	378	1,252	588	680	54	626	2,025
Southern Highlands and Shoalhaven	0	442	501	139	170	8	1	9	482	212	184	505	383	292	17	550	1,172
NSW	52	28,356	32,015	5,804	7,389	1,448	130	847	27,776	10,564	13,173	39,035	24,457	19,503	4,547	48,397	61,039

* For murder the count given is for the number of victims, not incidents.

TABLE 3.1D: NUMBER OF RECORDED CRIMINAL INCIDENTS FOR MAJOR OFFENCES, OVER THE 12 MONTHS TO DECEMBER 2016, NSW SAs

<i>NSW Statistical Area</i>	Murder *	Domestic violence related assault	Non-domestic violence related assault	Sexual assault	Indecent assault, act of indecency and other sexual offences	Robbery without a weapon	Robbery with a firearm	Robbery with a weapon not a firearm	Break and enter dwelling	Break and enter non-dwelling	Motor vehicle theft	Steal from motor vehicle	Steal from retail store	Steal from dwelling	Steal from person	Fraud	Malicious damage to property
Greater Sydney	48	16,291	17,837	2,587	3,787	1,031	119	530	14,866	5,017	7,262	22,373	14,639	11,141	3,891	37,394	33,100
Capital Region	0	694	807	162	215	10	2	4	661	326	295	1,011	551	509	36	732	1,835
Central West	3	1,071	1,123	225	286	24	6	26	1,448	666	480	1,361	707	865	67	1,127	2,605
Coffs Harbour - Grafton	0	769	709	157	167	11	1	23	636	379	261	703	409	506	63	673	1,467
Far West and Orana	4	1,185	974	199	227	17	3	21	1,784	630	541	1,629	653	823	84	640	2,435
Hunter Valley excluding Newcastle	1	1,410	1,102	250	283	21	7	36	1,549	714	817	2,074	810	1,157	91	1,272	2,765
Illawarra	2	1,052	1,124	208	218	50	8	28	1,080	628	562	1,959	1,058	788	116	1,157	2,422
Mid North Coast	1	1,019	998	242	310	12	1	26	1,051	596	389	857	535	836	69	892	2,136
Murray	2	525	489	97	123	15	3	7	613	363	198	798	369	490	32	461	1,222
New England and North West	2	1,282	1,157	217	294	24	1	25	1,602	655	375	1,482	763	1,008	60	989	3,056
Newcastle and Lake Macquarie	2	1,520	1,836	312	401	90	11	48	1,707	629	1,007	3,169	1,418	1,346	257	2,861	4,093
Richmond - Tweed	3	846	1,101	232	297	24	0	20	906	478	440	1,312	617	718	140	1,334	2,181
Riverina	2	959	878	151	190	24	1	23	1,249	385	301	1,154	634	756	37	656	2,050
Southern Highlands and Shoalhaven	0	517	530	120	169	11	1	10	561	239	198	595	379	404	18	648	1,279
NSW	70	29,145	31,755	5,208	6,986	1,364	164	829	29,713	11,708	13,127	40,479	23,542	21,347	4,961	50,847	62,815

* For murder the count given is for the number of victims, not incidents.

TABLE 3.2A: TRENDS[^] IN RECORDED CRIMINAL INCIDENTS FOR MAJOR OFFENCES OVER THE 24 MONTHS TO DECEMBER 2017, GREATER SYDNEY SAs

Greater Sydney Statistical Area	Murder *	Domestic violence related assault	Non-domestic violence related assault	Sexual assault	Indecent assault, act of indecency and other sexual offences	Robbery without a weapon	Robbery with a firearm	Robbery with a weapon not a firearm	Break and enter dwelling	Break and enter non-dwelling	Motor vehicle theft	Steal from motor vehicle	Steal from retail store	Steal from dwelling	Steal from person	Fraud	Malicious damage to property
Baulkham Hills and Hawkesbury	.	ns	ns	43.3	ns	.	.	.	ns	-37.4	-12.6	ns	ns	ns	ns	ns	ns
Blacktown	.	ns	ns	ns	ns	-23.5	.	ns	ns	ns	ns	11.5	ns	ns	-9.9	ns	ns
Central Coast	.	ns	ns	ns	ns	55.9	.	ns	-21.6	-15.0	ns	-19.0	-10.6	ns	ns	ns	-12.1
City and Inner South	.	ns	ns	ns	30.6	ns	.	ns	-8.3	ns	ns	-21.7	17.5	ns	-12.7	-18.7	ns
Eastern Suburbs	.	ns	ns	ns	ns	ns	.	.	-6.0	ns	ns	-10.5	ns	ns	ns	ns	ns
Inner South West	.	ns	ns	37.8	ns	ns	.	ns	ns	ns	ns	ns	ns	ns	ns	-7.8	ns
Inner West	.	ns	ns	ns	ns	ns	.	ns	ns	ns	ns	ns	ns	-28.3	ns	-15.4	ns
North Sydney and Hornsby	.	ns	ns	ns	ns	ns	.	.	ns	ns	ns	ns	ns	ns	ns	ns	ns
Northern Beaches	.	ns	ns	ns	ns	ns	.	.	ns	ns	ns	ns	-18.5	ns	ns	ns	ns
Outer South West	.	ns	-12.2	ns	ns	ns	.	ns	-22.1	-15.8	ns	ns	ns	ns	ns	-20.0	-13.1
Outer West and Blue Mountains	.	ns	ns	ns	ns	ns	.	ns	ns	-19.8	ns	ns	ns	-12.9	ns	ns	ns
Parramatta	.	ns	ns	ns	ns	57.9	ns	ns	ns	ns	ns	ns	15.8	ns	ns	ns	ns
Ryde	.	ns	ns	42.2	46.6	.	.	.	34.7	48.0	ns	ns	64.7	ns	ns	ns	24.5
South West	.	ns	ns	ns	ns	30.8	.	ns	ns	ns	-9.0	-8.9	ns	-19.5	ns	ns	ns
Sutherland	.	ns	ns	ns	ns	.	.	.	ns	ns	ns	ns	ns	ns	ns	-8.0	ns

[^] For further explanation of **trend results**, see page 42, Notes [5] and [6].

TABLE 3.2B: RATIO TO NSW RATE[^] OF RECORDED CRIMINAL INCIDENTS PER 100,000 POPULATION FOR MAJOR OFFENCES OVER THE 12 MONTHS TO DECEMBER 2017, GREATER SYDNEY SAs

Greater Sydney Statistical Area	Murder *	Domestic violence related assault	Non-domestic violence related assault	Sexual assault	Indecent assault, act of indecency and other sexual offences	Robbery without a weapon	Robbery with a firearm	Robbery with a weapon not a firearm	Break and enter dwelling	Break and enter non-dwelling	Motor vehicle theft	Steal from motor vehicle	Steal from retail store	Steal from dwelling	Steal from person	Fraud	Malicious damage to property
Baulkham Hills and Hawkesbury	0.0	0.4	0.4	0.5	0.4	0.1	0.0	0.2	0.5	0.3	0.4	0.5	0.4	0.4	0.3	0.7	0.4
Blacktown	1.7	1.6	1.2	1.1	1.1	2.1	1.4	2.1	1.3	0.7	1.4	1.6	1.2	1.1	1.4	1.5	1.2
Central Coast	2.2	1.3	1.0	1.1	1.2	0.8	0.5	0.9	0.9	0.9	1.3	1.0	0.8	0.9	0.9	1.0	1.2
City and Inner South	1.3	1.1	2.6	1.2	1.8	3.5	2.6	2.7	0.8	1.4	1.0	1.0	3.3	1.5	6.6	2.6	1.3
Eastern Suburbs	1.0	0.6	0.8	0.7	0.8	0.9	0.8	0.5	0.7	0.4	0.7	0.6	1.1	1.0	1.3	1.0	0.7
Inner South West	1.2	0.9	0.7	0.6	0.5	1.0	1.3	0.8	0.6	0.4	0.9	0.8	0.5	0.6	0.5	1.0	0.7
Inner West	1.0	0.5	0.6	0.5	0.6	0.8	0.6	0.9	0.8	0.6	0.7	0.8	0.8	0.8	1.0	1.2	0.6
North Sydney and Hornsby	0.4	0.3	0.4	0.5	0.5	0.5	0.1	0.3	0.7	0.7	0.4	0.5	0.9	0.7	0.7	0.8	0.5
Northern Beaches	0.6	0.4	0.6	0.5	0.5	0.4	0.0	0.3	0.5	0.6	0.5	0.7	0.6	0.6	0.6	0.7	0.5
Outer South West	1.1	1.2	0.8	1.2	1.1	1.0	0.9	0.9	0.8	0.7	0.8	0.8	1.1	0.7	0.5	0.8	0.9
Outer West and Blue Mountains	0.5	1.3	1.0	1.3	1.2	1.2	0.6	1.2	0.9	0.8	1.2	1.1	1.0	1.0	1.0	1.2	1.1
Parramatta	1.0	1.0	0.9	0.8	0.8	1.9	2.7	1.3	1.0	0.7	1.0	1.1	0.9	0.8	1.2	1.3	0.7
Ryde	0.0	0.4	0.4	0.4	0.6	0.3	1.3	0.3	0.9	0.6	0.5	0.6	1.0	0.6	0.5	0.9	0.6
South West	0.4	1.0	0.8	0.7	0.8	1.5	1.7	1.5	0.9	0.6	1.0	1.0	0.8	0.7	0.8	1.2	0.8
Sutherland	0.7	0.6	0.6	0.7	0.6	0.3	0.0	0.5	0.4	0.4	0.5	0.7	0.8	0.5	0.5	0.6	0.7

[^] For further explanation of **rate calculation populations** and the **ratio to NSW rate**, see page 42, Footnote 2 and Note [8].

* The rate calculations on the offence of murder is for the number of victims, not incidents.

TABLE 3.2C: NUMBER OF RECORDED CRIMINAL INCIDENTS FOR MAJOR OFFENCES, OVER THE 12 MONTHS TO DECEMBER 2017, GREATER SYDNEY SAs

Greater Sydney Statistical Area	Murder *	Domestic violence related assault	Non-domestic violence related assault	Sexual assault	Indecent assault, act of indecency and other sexual offences	Robbery without a weapon	Robbery with a firearm	Robbery with a weapon not a firearm	Break and enter dwelling	Break and enter non-dwelling	Motor vehicle theft	Steal from motor vehicle	Steal from retail store	Steal from dwelling	Steal from person	Fraud	Malicious damage to property
Baulkham Hills and Hawkesbury	0	335	366	96	82	5	0	4	459	109	167	613	318	260	36	971	695
Blacktown	4	2,029	1,668	289	366	140	8	80	1,585	313	854	2,747	1,293	962	283	3,265	3,403
Central Coast	5	1,640	1,435	277	383	53	3	34	1,099	407	746	1,733	844	796	170	2,092	3,085
City and Inner South	3	1,362	3,651	302	585	222	15	100	956	663	557	1,677	3,518	1,292	1,313	5,518	3,394
Eastern Suburbs	2	610	998	144	207	50	4	17	704	171	351	921	957	732	211	1,851	1,529
Inner South West	5	1,930	1,630	255	305	114	13	51	1,228	345	867	2,346	983	859	186	3,681	3,098
Inner West	2	594	774	124	163	46	3	31	898	265	345	1,281	737	632	173	2,294	1,507
North Sydney and Hornsby	1	458	714	152	216	39	1	14	1,087	380	254	1,167	1,165	723	167	2,032	1,681
Northern Beaches	1	356	610	97	128	21	0	9	447	206	243	919	488	417	87	1,198	1,133
Outer South West	2	1,207	844	236	278	51	4	27	765	262	381	1,078	940	506	82	1,320	2,013
Outer West and Blue Mountains	1	1,552	1,313	310	364	70	3	42	1,073	353	662	1,767	1,028	754	179	2,347	2,853
Parramatta	3	1,699	1,698	279	359	169	21	69	1,717	465	822	2,620	1,291	990	330	3,813	2,660
Ryde	0	288	323	64	107	10	4	6	594	145	146	581	606	294	51	1,120	850
South West	1	1,545	1,373	234	334	119	12	71	1,327	368	746	2,055	1,117	708	200	3,085	2,497
Sutherland	1	479	585	112	129	13	0	12	354	116	205	746	541	303	69	835	1,254

* For murder the count given is for the number of victims, not incidents.

TABLE 3.2D: NUMBER OF RECORDED CRIMINAL INCIDENTS FOR MAJOR OFFENCES, OVER THE 12 MONTHS TO DECEMBER 2016, GREATER SYDNEY SAs

Greater Sydney Statistical Area	Murder *	Domestic violence related assault	Non-domestic violence related assault	Sexual assault	Indecent assault, act of indecency and other sexual offences	Robbery without a weapon	Robbery with a firearm	Robbery with a weapon not a firearm	Break and enter dwelling	Break and enter non-dwelling	Motor vehicle theft	Steal from motor vehicle	Steal from retail store	Steal from dwelling	Steal from person	Fraud	Malicious damage to property
Baulkham Hills and Hawkesbury	1	315	340	67	123	12	5	9	516	174	191	540	286	294	53	1,013	718
Blacktown	3	2,070	1,587	246	326	183	18	56	1,569	376	786	2,464	1,089	974	314	2,887	3,424
Central Coast	3	1,759	1,477	298	396	34	10	28	1,402	479	763	2,140	944	785	151	2,055	3,509
City and Inner South	3	1,260	3,666	270	448	215	10	86	1,043	693	539	2,143	2,993	1,349	1,504	6,784	3,632
Eastern Suburbs	1	641	1,030	116	193	33	3	30	749	163	357	1,029	979	841	228	1,873	1,576
Inner South West	12	2,053	1,594	185	283	114	12	65	1,228	395	895	2,249	986	887	206	3,993	3,336
Inner West	1	571	781	103	192	43	3	25	1,002	249	373	1,384	718	881	172	2,711	1,583
North Sydney and Hornsby	1	459	652	131	204	25	1	10	925	394	182	949	1,000	674	129	2,100	1,625
Northern Beaches	4	305	593	102	115	24	0	3	474	245	173	838	599	453	100	1,246	1,171
Outer South West	2	1,285	961	211	297	52	9	23	982	311	454	1,250	871	583	114	1,651	2,317
Outer West and Blue Mountains	4	1,490	1,300	278	337	75	9	47	1,047	440	665	1,510	1,035	866	196	2,271	2,905
Parramatta	2	1,641	1,587	239	330	107	27	65	1,820	478	766	2,478	1,115	1,095	393	3,793	2,808
Ryde	1	263	339	45	73	11	0	5	441	98	106	535	368	301	61	1,120	683
South West	8	1,692	1,327	230	335	91	11	73	1,318	395	820	2,256	1,139	880	206	2,989	2,510
Sutherland	2	487	603	66	135	12	1	5	350	127	192	608	517	278	64	908	1,303

* For murder the count given is for the number of victims, not incidents.

OVER THE 24 MONTHS TO DECEMBER 2017. NSW LGAs

OVER THE 24 MONTHS TO DECEMBER 2017, NSW LGAs																	
	Murder *	Domestic violence related assault	Non-domestic violence related assault	Sexual assault	Indecent assault, act of indecency and other sexual offences	Robbery without a weapon	Robbery with a firearm	Robbery with a weapon not a firearm	Break and enter dwelling	Break and enter non-dwelling	Motor vehicle theft	Steal from motor vehicle	Steal from retail store	Steal from dwelling	Steal from person	Fraud	Malicious damage to property
NSW LGA																	
Albury	.	ns	ns	ns	ns	.	.	.	ns	-7.0	42.1	ns	ns	ns	.	ns	ns
Armidale Regional	.	ns	ns	ns	ns	.	.	.	ns	-40.1	ns	-56.4	ns	ns	.	ns	ns
Ballina	.	ns	34.3	ns	ns	.	.	.	ns	ns	90.0	ns	ns	ns	.	ns	ns
Balranald	ns
Bathurst Regional	.	ns	ns	ns	ns	.	.	.	ns	-41.2	-38.1	ns	-37.3	ns	.	ns	ns
Bayside	.	ns	ns	ns	ns	ns	.	.	ns	ns	ns	ns	22.3	ns	ns	ns	ns
Bega Valley	.	ns	ns	ns	ns	.	.	.	ns	ns	.	ns	ns	ns	.	ns	ns
Bellingen	.	ns	ns	ns	ns	.	ns	.	ns	.	ns	ns
Berrigan	-11.7
Blacktown	.	ns	ns	17.1	ns	-25.0	.	ns	ns	ns	ns	11.3	ns	ns	ns	ns	ns
Bland	ns
Blayney	ns	.	.	ns	ns
Blue Mountains	.	ns	ns	ns	ns	.	.	.	ns	-29.2	ns	ns	ns	ns	ns	ns	ns
Bogan	.	ns	ns	ns
Bourke	.	ns	ns	ns	-51.7	.	ns	ns	ns	.	ns	-37.0
Brewarrina	.	ns	ns	ns	ns	ns
Broken Hill	.	ns	ns	ns	ns	.	.	.	39.1	ns	ns	ns	ns	ns	.	ns	ns
Burwood	.	ns	ns	.	ns	.	.	.	-31.1	ns	ns	ns	ns	ns	ns	-29.4	ns
Byron	.	ns	ns	ns	ns	.	.	.	ns	ns	ns	-38.0	ns	ns	ns	-27.7	ns
Cabonne	.	ns	ns	ns	.	ns	.	ns	.	ns	-42.4
Camden	.	37.2	ns	ns	ns	.	.	.	ns	-39.3	ns	ns	ns	ns	.	ns	ns
Campbelltown	.	ns	ns	ns	ns	ns	.	ns	-23.2	-10.7	-19.5	-15.5	ns	ns	ns	-21.2	-18.4
Canada Bay	.	ns	ns	ns	ns	.	.	.	ns	ns	ns	ns	ns	-27.1	ns	ns	ns
Canterbury-Bankstown	.	ns	ns	ns	ns	ns	.	ns	ns	ns	ns	ns	ns	ns	ns	-13.7	ns
Carrathool	ns
Central Coast	.	ns	ns	ns	ns	55.9	.	ns	-21.6	-15.0	ns	-19.0	-10.6	ns	ns	ns	-12.1
Central Darling	.	ns	ns	ns	ns	.	ns	ns
Cessnock	.	ns	ns	ns	ns	.	.	.	ns	ns	ns	.	-25.4	ns	ns	ns	21.4
Clarence Valley	.	ns	ns	ns	ns	.	.	.	-39.9	ns	ns	-19.9	ns	ns	.	ns	ns
Cobar	.	-21.4	ns	-50.0	.	.	ns	ns
Coffs Harbour	.	ns	27.6	ns	ns	.	.	.	31.8	ns	ns	ns	-31.3	ns	ns	ns	-8.7
Coolamon
Coonamble	.	ns	ns	-10.9	ns	.	ns	.	ns	.	ns	ns
Cootamundra-Gundagai	.	ns	ns	ns	.	.	ns	.	ns	.	ns	ns
Cowra	.	ns	ns	ns	ns	.	ns	ns	ns	.	ns	ns
Cumberland	.	ns	ns	ns	ns	ns	.	25.8	ns	ns	ns	ns	ns	ns	ns	-34.6	ns
Dubbo Regional	.	ns	ns	ns	ns	.	.	.	-36.1	-43.6	-28.6	-37.7	ns	-31.7	-30.4	ns	ns</

**TABLE 3.3A: TRENDS^a IN RECORDED CRIMINAL INCIDENTS FOR MAJOR OFFENCES
OVER THE 24 MONTHS TO DECEMBER 2017, NSW LGAs**

NSW LGA	Murder [*]	Domestic violence related assault	Non-domestic violence related assault	Sexual assault	Indecent assault, act of indecency and other sexual offences	Robbery without a weapon	Robbery with a firearm	Robbery with a weapon not a firearm	Break and enter dwelling	Break and enter non-dwelling	Motor vehicle theft	Steal from motor vehicle	Steal from retail store	Steal from dwelling	Steal from person	Fraud	Malicious damage to property
Lane Cove	.	ns	ns	93.2	ns	.	56.6	.	ns	.	ns	ns
Leeton	.	ns	ns	ns	ns	ns	ns	ns	ns	.	ns	ns
Lismore	.	ns	ns	ns	ns	.	.	.	ns	ns	ns	ns	-23.0	ns	.	ns	ns
Lithgow	.	ns	ns	.	ns	.	.	.	ns	-50.0	ns	ns	ns	ns	.	ns	-16.5
Liverpool	.	ns	ns	ns	ns	56.4	.	ns	ns	ns	-4.0	ns	ns	-19.3	ns	ns	ns
Liverpool Plains	.	-47.8	ns	ns	ns	.	.	.	ns	.	ns	ns
Lockhart
Lord Howe Island
Maitland	.	ns	ns	ns	ns	.	.	.	ns	ns	ns	ns	ns	ns	ns	ns	ns
Mid-Coast	.	ns	ns	ns	ns	.	.	.	ns	ns	ns	27.9	ns	ns	ns	ns	ns
Mid-Western Regional	.	ns	ns	ns	ns	.	.	.	ns	ns	ns	ns	ns	ns	.	ns	ns
Moree Plains	.	ns	ns	ns	ns	.	.	.	ns	59.9	ns	48.1	ns	ns	.	ns	20.6
Mosman	.	ns	ns	ns	ns	.	ns	.	ns	.	ns	ns
Murray River	ns	-57.7	.	ns	.	ns	.	ns	ns
Murrumbidgee	ns	ns
Muswellbrook	.	ns	ns	ns	ns	.	.	.	ns	-33.3	-32.2	ns	-34.6	ns	.	ns	-11.5
Nambucca	.	ns	-41.7	ns	ns	.	.	.	ns	55.6	ns	ns	ns	ns	.	ns	ns
Narrabri	.	ns	ns	-35.5	ns	ns	ns	ns	ns	.	ns	ns
Narrandera	.	ns	ns	ns	ns	.	ns	ns	ns	.	.	ns
Narromine	.	ns	ns	-40.8	ns	.	ns	.	-41.8	.	ns	ns
Newcastle	.	ns	ns	ns	ns	-50.0	.	ns	ns	49.8	ns	15.3	ns	ns	ns	ns	ns
North Sydney	.	ns	ns	ns	ns	.	.	.	ns	ns	ns	ns	ns	ns	ns	ns	ns
Northern Beaches	.	ns	ns	ns	ns	ns	.	.	ns	ns	ns	ns	-18.5	ns	ns	ns	ns
Oberon	ns
Orange	.	ns	ns	ns	ns	.	.	.	ns	ns	ns	-28.4	ns	-32.0	.	ns	ns
Parkes	.	ns	ns	.	ns	.	.	.	-38.7	ns	.	-48.8	-44.8	ns	.	ns	-21.5
Parramatta	.	ns	ns	ns	ns	ns	.	ns	ns	ns	ns	22.6	26.0	ns	ns	ns	ns
Penrith	.	ns	ns	ns	ns	ns	.	ns	ns	ns	ns	ns	ns	ns	ns	ns	ns
Port Macquarie-Hastings	.	ns	-19.9	ns	-18.6	.	.	.	ns	75.8	ns	ns	ns	ns	ns	ns	ns
Port Stephens	.	ns	ns	ns	ns	.	.	.	-37.1	ns	ns	-29.8	ns	-29.0	.	ns	ns
Queanbeyan-Palerang Regional	.	ns	ns	ns	ns	.	.	.	ns	ns	ns	ns	ns	ns	.	ns	ns
Randwick	.	ns	ns	ns	ns	ns	.	.	ns	ns	-19.2	-20.8	ns	-16.6	ns	ns	ns
Richmond Valley	.	ns	ns	ns	ns	.	.	.	ns	ns	ns	-42.9	ns	-21.2	.	ns	-45.0
Ryde	.	ns	ns	ns	59.2	.	.	.	ns	96.0	ns	ns	70.7	ns	ns	ns	19.0
Shellharbour	.	ns	ns	ns	ns	.	.	.	ns	-39.5	ns	ns	ns	ns	.	-10.2	ns
Shoalhaven	.	ns	ns	ns	ns	.	.	.	ns	ns	ns	ns	ns	ns	.	ns	ns
Singleton	.	31.0	ns	ns	ns	ns	ns	ns	ns	.	ns	ns
Snowy Monaro Regional	.	ns	ns	ns	ns	.	.	ns	.	.	.	ns	ns
Snowy Valleys	.	ns	ns	.	ns	.	.	.	ns	ns	.	46.0	ns	ns	.	ns	ns
Strathfield	.	ns	ns	.	ns	.	.	.	ns	ns	ns	ns	ns	-52.6	ns	ns	ns
Sutherland Shire	.	ns	ns	ns	ns	.	.	.	ns	ns	ns	ns	ns	ns	ns	-8.1	ns
Sydney	.	ns	ns	ns	35.7	ns	.	ns	-12.2	ns	ns	-28.7	17.9	ns	-13.7	-19.5	-9.4
Tamworth Regional	.	ns	27.9	ns	ns	.	.	.	ns	37.4	ns	34.0	ns	-21.3	ns	ns	ns
Temora	.	.	ns	ns	.	.	ns	.	ns	.	.	ns
Tenterfield	.	ns	ns	ns	.	.	ns	.	ns	.	ns	ns
The Hills Shire	.	ns	ns	ns	ns	.	.	.	ns	-37.2	ns	ns	ns	ns	ns	ns	ns
Tweed	.	ns	ns	ns	ns	.	.	.	ns	ns	ns	ns	ns	ns	ns	ns	ns
Unincorporated Far West
Upper Hunter Shire	.	ns	ns	ns	ns	ns	-44.1	.	ns	.	ns	-36.6
Upper Lachlan Shire	ns
Uralla	.	ns	ns
Wagga Wagga	.	ns	ns	ns	-16.7	.	.	.	ns	87.5	ns	-19.1	ns	-14.4	ns	ns	ns
Walcha
Walgett	.	ns	ns	77.4	ns	.	ns	ns	ns	.	ns	ns
Warren	.	ns	ns	ns	.	.	ns	ns
Warrumbungle Shire	.	ns	ns	ns	.	.	ns	.	ns	.	ns	ns
Waverley	.	ns	ns	ns	ns	.	.	.	ns	ns	ns	ns	ns	ns	ns	ns	ns
Weddin	ns
Wentworth	.	ns	106.7	ns	ns	.	ns	.	ns	.	.	ns
Willoughby	.	ns	ns	ns	ns	.	.	.	ns	ns	ns	ns	ns	ns	ns	-14.8	ns
Wingecarribee	.	ns	ns	ns	ns	.	.	.	ns	ns	ns	ns	ns	-46.9	.	ns	ns
Wollondilly	.	ns	ns	ns	ns	.	.	.	ns	ns	ns	-28.0	.	ns	.	ns	34.1
Wollongong	.	-17.6	ns	ns	ns	ns	.	ns	-13.9	-39.0	ns	ns	ns	ns	ns	ns	ns
Woollahra	.	ns	ns	ns	ns	.	.	.	ns	ns	ns	ns	ns	ns	ns	ns	ns
Yass Valley	.	ns	ns	ns	ns	.	ns	ns
NSW	ns	ns	ns	ns	ns	ns	ns	ns	-6.5	-9.8	ns	ns	3.9	ns	-8.3	-4.8	ns

^a For further explanation of **trend results**, see page 42, Notes [5] and [6].

^{*} There were no LGAs with 20 murder victims, hence no trend tests were reported. The trend test for NSW on the offence of murder is for the number of victims, not incidents.

**TABLE 3.3B: RATIO TO NSW RATE* OF RECORDED CRIMINAL INCIDENTS PER 100,000 POPULATION
FOR MAJOR OFFENCES OVER THE 12 MONTHS TO DECEMBER 2017, NSW LGAs**

NSW LGA	Murder *	Domestic violence related assault	Non-domestic violence related assault	Sexual assault	Indecent assault, act of indecency and other sexual offences	Robbery without a weapon	Robbery with a firearm	Robbery with a weapon not a firearm	Break and enter dwelling	Break and enter non-dwelling	Motor vehicle theft	Steal from motor vehicle	Steal from retail store	Steal from dwelling	Steal from person	Fraud	Malicious damage to property
Albury	.	1.5	1.5	1.4	1.9	0.9	2.3	0.4	1.9	1.9	1.7	2.4	1.5	1.9	0.5	1.1	1.7
Armidale Regional	4.9	1.6	1.6	1.6	1.3	1.8	2.0	2.4	2.5	2.4	0.9	1.5	1.8	2.2	1.1	0.9	2.0
Ballina	.	0.7	1.0	0.8	0.9	0.6	.	0.6	0.8	1.5	1.0	1.2	0.7	1.0	0.6	0.7	1.0
Balranald
Bathurst Regional	.	1.4	1.4	1.9	1.7	0.9	2.8	0.4	1.6	1.3	0.9	1.3	0.9	1.1	1.0	0.9	1.8
Bayside	0.9	0.9	0.7	0.6	0.6	1.0	1.8	1.1	0.5	0.5	0.8	0.8	0.8	0.7	0.9	1.0	0.8
Bega Valley	.	0.9	0.9	1.2	1.1	0.5	.	.	0.6	1.0	0.3	0.8	0.4	0.6	0.2	0.5	1.0
Bellingen	.	0.7	0.8	0.8	0.9	.	.	.	0.5	1.3	1.1	0.6	0.1	1.0	0.5	0.3	0.8
Berrigan	.	0.4	0.4	0.9	0.6	.	.	.	0.7	1.3	0.3	0.5	0.3	0.8	.	0.3	0.8
Blacktown	1.7	1.6	1.2	1.1	1.1	2.1	1.4	2.1	1.2	0.6	1.4	1.5	1.2	1.1	1.4	1.5	1.2
Bland	.	0.9	0.7	1.8	1.7	.	.	.	0.6	1.5	0.9	0.6	0.2	0.4	.	0.6	0.6
Blayney	.	1.4	0.8	0.9	1.8	.	8.0	.	1.0	1.5	1.1	0.7	0.1	0.9	0.5	0.3	0.9
Blue Mountains	.	0.9	0.7	1.2	0.9	0.7	.	0.2	0.6	0.6	0.4	0.5	0.3	0.7	0.6	0.7	1.0
Bogan
Bourke
Brewarrina
Broken Hill	.	2.7	2.1	1.5	2.0	0.9	.	1.0	3.2	2.5	1.6	1.8	0.8	2.3	0.6	0.5	2.5
Burwood	3.9	0.6	0.8	0.4	0.7	2.1	.	0.9	0.8	0.7	0.5	0.7	2.5	0.8	1.5	1.7	0.5
Byron	4.5	0.9	1.9	1.3	1.7	1.0	1.8	0.3	0.9	1.4	1.1	1.1	0.9	1.5	2.5	0.9	1.3
Cabonne	.	0.5	0.3	1.4	1.0	.	.	.	0.6	1.2	0.6	0.3	0.0	0.7	.	0.5	0.4
Camden	.	1.0	0.4	0.9	1.2	0.5	.	0.3	0.5	0.5	0.6	0.6	0.5	0.6	0.1	0.8	0.6
Campbelltown	1.8	1.4	1.0	1.3	1.1	1.4	1.5	1.3	1.0	0.9	1.0	1.0	1.6	1.0	0.8	0.9	1.1
Canada Bay	1.6	0.3	0.4	0.3	0.4	0.3	0.6	0.5	0.8	0.6	0.7	0.9	0.3	0.7	0.6	1.0	0.5
Canterbury-Bankstown	2.1	1.0	0.7	0.6	0.6	1.2	1.6	1.0	0.7	0.5	1.1	0.9	0.5	0.6	0.5	1.0	0.7
Carrathool
Central Coast	2.2	1.3	1.0	1.1	1.2	0.8	0.5	0.9	0.9	0.9	1.3	1.0	0.8	0.9	0.9	1.0	1.2
Central Darling
Cessnock	.	1.7	1.0	1.6	1.4	0.5	1.0	1.3	2.0	2.2	3.5	1.8	0.8	1.9	1.0	0.8	1.6
Clarence Valley	.	1.2	1.2	1.0	1.1	0.4	1.2	0.4	1.0	1.6	1.0	0.9	0.7	1.9	0.8	0.8	1.3
Cobar	.	1.9	2.2	2.2	3.1	.	.	.	1.4	2.8	1.8	1.8	0.1	0.9	.	0.5	2.5
Coffs Harbour	.	1.7	1.6	1.9	1.9	0.9	.	2.3	1.5	2.1	1.2	1.0	0.8	1.4	1.0	0.9	1.3
Coolamon	33.8	0.9	0.6	1.2	1.0	.	.	.	0.7	2.5	1.3	0.2	0.3	0.7	.	0.2	0.4
Coonamble	.	3.5	2.4	2.3	1.8	3.9	.	.	6.7	9.0	2.3	2.5	1.2	2.4	0.8	1.0	3.3
Cootamundra-Gundagai	.	1.4	0.9	1.5	1.2	.	.	0.8	1.0	0.8	0.4	0.7	0.4	1.3	0.2	1.3	1.1
Cowra	.	1.3	1.7	2.4	1.7	0.4	.	.	2.7	1.9	0.6	1.0	0.6	1.8	0.5	0.9	1.5
Cumberland	1.3	1.0	0.9	0.8	0.8	2.1	1.6	1.6	1.0	0.7	1.1	1.0	0.6	0.7	0.8	1.3	0.7
Dubbo Regional	.	1.8	1.9	2.0	2.0	0.8	.	1.8	3.3	2.0	2.5	2.4	2.1	2.0	1.3	1.1	2.4
Dungog	.	0.7	0.7	0.9	1.3	.	.	.	0.4	0.8	0.8	0.8	0.2	0.0	1.0	.	0.4
Edward River	.	1.2	1.1	1.6	1.6	.	.	.	1.2	1.2	0.5	1.2	0.6	1.7	0.6	0.5	1.7
Eurobodalla	.	1.1	1.3	1.1	1.2	0.6	.	0.7	1.2	1.4	0.9	0.9	0.7	1.1	0.3	0.6	1.3
Fairfield	.	1.0	0.8	0.7	0.7	1.7	2.0	2.3	0.7	0.5	1.0	0.8	0.5	0.5	0.8	1.1	0.7
Federation	.	0.7	0.6	0.9	0.9	.	.	.	0.7	1.9	0.5	0.7	0.3	1.5	0.4	0.5	1.0
Forbes	15.2	1.6	1.8	0.8	1.3	.	.	.	2.0	3.8	1.3	1.2	0.7	2.5	0.2	0.8	2.1
Georges River	.	0.8	0.6	0.5	0.5	1.0	0.4	0.3	0.4	0.4	0.5	0.5	0.7	0.5	0.7	1.0	0.6
Gilgandra	.	2.5	0.8	2.8	1.2	1.2	.	2.1	1.4	1.5	0.4	0.8	0.5	2.2	0.4	0.7	0.9
Glen Innes Severn	.	2.2	2.1	2.4	1.4	1.8	.	1.0	2.2	4.5	1.4	0.8	0.3	2.5	0.4	0.9	2.3
Goulburn Mulwaree	.	1.1	1.0	2.2	1.5	0.2	.	0.3	0.6	0.7	0.5	0.9	1.5	1.2	0.1	0.9	0.9
Greater Hume Shire	.	0.5	0.3	0.9	1.4	0.5	.	.	0.7	1.2	0.9	0.5	0.2	0.9	0.2	0.5	0.5
Griffith	.	2.2	1.3	1.0	0.8	0.6	.	3.1	1.7	2.1	1.5	2.4	1.4	1.5	0.6	0.5	1.9
Gunnedah	.	1.3	1.7	1.3	1.0	.	.	0.7	1.4	0.6	1.3	0.7	1.0	2.4	.	0.8	1.5
Gwydir	.	1.0	0.7	1.0	1.2	.	.	.	0.3	1.0	0.8	0.4	0.1	1.2	.	0.4	0.9
Hawkesbury	.	1.0	0.7	1.0	1.1	0.3	.	0.6	0.6	0.9	1.1	0.8	0.8	0.6	0.5	0.7	0.7
Hay
Hilltops	.	1.4	1.3	3.1	1.8	0.6	.	1.0	0.9	1.4	0.6	0.5	0.6	1.1	0.1	0.7	1.5
Hornsby	.	0.3	0.4	0.5	0.5	0.5	.	.	0.6	0.5	0.4	0.6	0.7	0.5	0.5	0.6	0.6
Hunters Hill	.	0.4	0.5	0.6	0.6	.	4.1	.	0.9	0.7	0.9	0.7	0.1	0.8	0.3	0.6	0.7
Inner West	0.8	0.6	0.8	0.7	0.7	1.1	1.6	1.2	0.7	0.6	0.8	0.8	0.6	1.0	1.0	1.2	0.9
Inverell	.	1.4	1.8	1.7	1.9	.	.	.	1.5	2.6	1.3	0.8	1.1	2.3	0.4	0.5	2.0
Junee	.	0.4	0.7	1.0	0.8	.	.	.	1.0	2.2	0.7	0.9	0.1	1.4	.	0.0	1.0
Kempsey	.	2.0	1.7	1.9	1.5	1.1	4.0	0.6	2.5	3.0	1.9	1.2	1.7	2.3	1.6	0.6	1.6
Kiama	.	0.4	0.3	0.6	0.7	0.2	.	0.8	0.7	0.9	1.0	1.2	0.1	0.7	0.3	0.4	0.5
Ku-ring-gai	.	0.2	0.2	0.4	0.4	0.2	.	0.1	0.8	0.5	0.2	0.4	0.1	0.5	0.3	0.6	0.4
Kyogle	.	1.4	0.7	1.5	0.6	.	.	.	1.0	1.9	0.8	0.4	0.2	0.9	.	0.2	0.8
Lachlan	.	2.5	1.7	1.5	2.6	.	.	.	1.6	4.7	2.0	1.0	0.4	2.6	0.3	0.3	1.5
Lake Macquarie	0.7	1.1	0.8	1.2	1.1	0.4	1.2	0.9	0.9	1.1	1.5	1.1	1.1	1.0	0.6	0.9	1.2

TABLE 3.3B: RATIO TO NSW RATE* OF RECORDED CRIMINAL INCIDENTS PER 100,000 POPULATION FOR MAJOR OFFENCES OVER THE 12 MONTHS TO DECEMBER 2017, NSW LGAs

NSW LGA	Murder *	Domestic violence related assault	Non-domestic violence related assault	Sexual assault	Indecent assault, act of indecency and other sexual offences	Robbery without a weapon	Robbery with a firearm	Robbery with a weapon not a firearm	Break and enter dwelling	Break and enter non-dwelling	Motor vehicle theft	Steal from motor vehicle	Steal from retail store	Steal from dwelling	Steal from person	Fraud	Malicious damage to property
Lane Cove	.	0.2	0.3	0.7	0.3	0.1	.	.	1.0	0.9	0.5	0.6	0.2	0.6	0.4	0.6	0.4
Leeton	.	1.5	1.5	2.1	2.0	0.5	.	0.8	1.7	2.0	1.6	1.0	0.8	1.5	0.3	0.6	1.3
Lismore	.	1.1	1.5	2.0	1.4	1.2	1.4	0.6	1.2	1.1	1.4	1.0	0.9	1.5	0.6	0.5	1.3
Lithgow	.	1.3	1.4	1.3	1.0	0.5	.	0.8	1.5	1.6	1.1	0.7	0.5	1.6	0.6	1.0	1.6
Liverpool	0.7	1.1	0.8	0.8	0.9	1.5	1.4	1.0	1.0	0.8	1.1	1.1	1.2	0.8	0.9	1.3	0.8
Liverpool Plains	.	1.2	1.2	0.8	2.0	.	.	.	0.9	3.2	1.4	0.5	0.2	1.7	.	0.4	1.6
Lockhart	.	0.9	0.9	1.3	0.3	.	.	.	0.4	1.2	0.6	0.4	.	0.5	.	0.2	0.7
Lord Howe Island
Maitland	.	1.5	1.0	1.2	1.4	0.6	1.5	0.9	1.3	1.4	1.7	1.8	1.3	1.7	0.5	1.0	1.4
Mid-Coast	1.6	1.2	1.1	1.6	1.3	1.0	.	1.1	1.4	2.2	1.1	0.8	0.8	1.6	0.6	0.6	1.3
Mid-Western Regional	6.1	1.2	1.1	2.0	1.4	0.2	.	.	1.2	0.7	0.8	1.0	0.4	1.4	0.4	0.5	1.3
Moree Plains	.	4.4	3.1	4.3	2.9	5.9	13.1	8.1	8.2	11.8	5.1	4.1	3.4	4.6	2.0	1.1	6.1
Mosman	.	0.5	0.3	0.6	0.6	0.4	.	0.6	0.6	0.6	0.4	0.6	0.3	0.8	0.3	0.6	0.5
Murray River	12.5	0.3	0.4	0.2	0.3	0.4	.	0.8	0.6	1.8	0.6	0.7	0.4	0.7	0.1	0.5	0.6
Murrumbidgee	.	1.8	1.0	0.7	0.5	.	.	.	0.9	2.2	1.0	0.6	0.2	1.6	.	0.4	1.0
Muswellbrook	.	1.5	1.4	1.8	1.5	1.3	3.6	2.2	2.6	2.0	1.4	1.3	1.0	1.4	0.5	0.5	1.7
Nambucca	.	1.5	1.0	2.2	2.1	0.3	.	1.9	1.5	3.2	1.2	1.5	0.9	1.3	0.5	0.7	1.7
Narrabri	11.0	1.5	1.6	1.3	0.9	.	.	.	1.4	1.2	1.5	1.1	0.5	1.8	0.3	0.9	1.6
Narrandera	.	1.6	1.3	1.6	1.2	.	.	1.5	4.1	9.7	2.5	2.2	1.1	1.5	.	0.5	1.6
Narromine	.	2.3	1.6	2.0	3.2	0.8	.	.	2.4	6.4	1.7	1.6	0.6	2.3	1.0	0.5	1.9
Newcastle	0.9	1.1	1.6	1.5	1.8	0.9	1.5	2.1	1.7	2.0	1.8	2.7	1.7	1.8	1.9	1.6	1.8
North Sydney	.	0.5	0.7	0.4	0.5	0.9	0.8	0.8	0.6	0.8	0.3	0.6	0.7	1.2	1.1	1.1	0.6
Northern Beaches	0.6	0.4	0.6	0.5	0.5	0.4	.	0.3	0.5	0.6	0.5	0.7	0.6	0.6	0.6	0.7	0.5
Oberon	27.6	1.0	0.9	0.7	0.8	1.6	0.3	0.3	0.2	0.9	0.3	0.6	1.1
Orange	.	1.8	1.3	1.9	2.0	0.9	.	2.4	2.2	1.5	1.8	1.4	2.0	1.3	0.7	0.8	1.8
Parkes	10.0	1.5	1.5	1.5	1.8	.	.	.	0.9	1.9	0.7	0.8	0.7	1.8	0.1	0.8	2.0
Parramatta	0.6	0.8	0.8	0.7	0.8	1.6	3.3	0.9	1.1	0.7	0.8	1.2	1.2	1.0	1.6	1.3	0.8
Penrith	0.7	1.5	1.1	1.4	1.3	1.5	1.2	1.7	1.1	0.8	1.5	1.4	1.3	1.1	1.2	1.4	1.2
Port Macquarie-Hastings	.	0.8	0.8	1.0	0.9	0.5	.	1.0	0.7	1.6	0.9	0.6	0.8	1.2	0.4	0.7	1.0
Port Stephens	.	1.2	0.8	1.2	1.3	.	1.7	0.4	0.9	1.1	1.0	0.8	0.8	1.0	0.2	0.8	1.1
Queanbeyan-Palerang Regional	2.6	0.6	0.7	0.7	0.6	0.4	.	.	0.8	0.8	1.1	1.1	0.9	0.9	0.2	0.5	1.1
Randwick	2.0	0.6	0.8	0.7	0.7	1.3	1.2	1.0	0.7	0.5	0.7	0.6	0.6	1.0	1.1	1.0	0.6
Richmond Valley	.	1.8	1.5	1.8	1.7	0.5	.	0.8	1.4	1.6	1.2	0.8	0.9	1.1	0.4	0.7	1.2
Ryde	.	0.5	0.5	0.5	0.7	0.4	1.5	0.5	0.8	0.6	0.4	0.6	1.4	0.6	0.5	1.1	0.6
Shellharbour	.	0.9	0.7	1.1	0.9	0.8	1.7	1.0	0.8	0.7	1.1	1.0	1.2	0.8	0.4	0.6	1.0
Shoalhaven	.	0.9	0.9	1.4	1.3	0.3	0.6	0.8	1.1	1.1	0.8	0.8	1.0	0.8	0.2	0.6	1.1
Singleton	.	1.3	1.0	1.3	1.4	1.1	.	0.4	1.1	1.8	1.4	0.9	0.8	1.2	0.1	0.7	0.8
Snowy Monaro Regional	.	0.8	0.9	1.5	0.9	.	.	.	0.5	0.4	0.1	0.4	0.2	0.3	0.1	0.5	0.9
Snowy Valleys	.	1.2	1.1	1.5	1.7	0.4	.	.	2.2	2.3	1.1	2.0	0.5	1.9	0.8	0.4	1.8
Strathfield	.	0.9	0.9	0.5	0.6	0.6	2.8	1.7	1.2	0.6	0.7	1.2	0.6	0.7	1.8	1.8	0.7
Sutherland Shire	0.7	0.6	0.6	0.7	0.6	0.3	.	0.5	0.4	0.4	0.5	0.7	0.8	0.5	0.5	0.6	0.7
Sydney	0.7	1.2	3.5	1.5	2.2	4.5	2.1	3.2	0.9	1.9	0.9	1.0	4.4	1.8	9.2	3.2	1.4
Tamworth Regional	.	1.5	1.7	1.5	1.5	0.8	1.0	1.0	2.5	1.9	1.2	1.8	1.3	1.7	0.8	0.8	1.9
Temora	.	1.2	1.0	0.6	0.2	.	.	.	1.3	0.8	0.9	0.7	0.6	1.3	.	0.4	1.0
Tenterfield	.	1.5	1.6	0.4	1.6	.	.	2.7	1.4	1.6	0.9	0.8	0.2	2.0	0.3	0.5	1.4
The Hills Shire	.	0.4	0.4	0.5	0.3	0.2	.	0.2	0.6	0.3	0.4	0.6	0.6	0.5	0.4	0.8	0.4
Tweed	4.8	0.8	0.8	0.7	0.9	0.3	1.3	0.6	0.7	0.7	0.9	0.8	0.5	0.8	0.6	0.7	0.9
Unincorporated Far West
Upper Hunter Shire	.	0.5	0.6	1.2	1.4	.	.	.	0.9	2.1	1.0	0.5	0.3	1.1	0.2	0.5	0.8
Upper Lachlan Shire	.	0.3	0.4	0.5	0.8	.	.	.	0.4	0.6	0.1	0.3	0.0	0.9	.	0.3	0.5
Uralla	.	0.9	0.4	1.5	0.5	.	.	.	0.5	0.5	0.7	0.4	.	0.8	.	0.4	0.5
Wagga Wagga	2.3	1.6	1.6	1.3	1.0	0.7	.	1.4	3.4	1.9	1.7	1.7	1.8	2.1	0.9	0.8	1.9
Walcha	47.3	0.8	1.2	3.0	2.7	.	.	.	0.3	0.2	0.4	0.6	0.1	0.9	0.5	0.2	0.5
Walgett	.	6.3	3.6	2.7	1.6	.	.	.	4.8	4.5	2.4	1.8	1.2	3.1	.	0.8	4.4
Warren
Warrumbungle Shire	.	1.4	1.0	2.9	1.5	.	6.2	.	1.2	1.4	0.7	0.5	0.6	1.3	0.4	0.6	1.3
Waverley	.	0.6	1.1	0.8	0.9	0.9	0.8	0.3	0.6	0.3	0.9	0.6	2.5	1.1	1.2	1.2	0.8
Weddin	.	1.0	0.4	0.7	1.1	.	.	.	0.3	0.4	0.5	0.3	0.3	1.6	0.5	0.4	1.3
Wentworth	21.5	2.3	2.2	2.7	1.2	3.1	.	.	2.1	3.3	2.6	1.7	0.3	1.6	0.5	0.4	2.3
Willoughby	1.9	0.3	0.6	0.4	0.7	0.5	.	0.6	0.7	0.8	0.4	0.5	2.4	0.6	1.0	1.0	0.5
Wingecarribee	.	0.6	0.5	0.8	0.9	0.2	.	.	0.4	1.0	0.5	0.3	0.3	0.6	0.1	0.5	0.8
Wollondilly	.	0.9	0.4	0.8	0.7	0.2	.	0.4	0.5	0.6	0.7	0.3	0.1	0.4	0.1	0.5	0.7
Wollongong	.	0.8	1.0	0.9	0.8	1.1	1.1	1.2	0.9	1.0	1.0	1.2	1.3	1.1	0.6	0.6	1.1
Woollahra	.	0.4	0.6	0.6	0.7	0.1	.	.	0.7	0.4	0.6	0.7	0.4	1.0	1.3	0.8	0.6
Yass Valley	.	0.4	0.4	0.6	0.7	.	.	.	0.4	1.5	0.3	0.2	0.3	0.5	.	0.5	0.5
NSW	1.0	1.0	1.0	1.0	1.0	1.0	1.0	1.0	1.0	1.0	1.0	1.0	1.0	1.0	1.0	1.0	1.0

* For further explanation of rate calculation populations and the ratio to NSW rate, see page 42, Footnote 2 and Note [8]. A result of . indicates either that there were no relevant offences recorded in the LGA, or that the population is less than 3,000 people and no rate was calculated.

Sydney LGA can be considered a special case since the population used to calculate the rate is much lower than the population using the area for work and entertainment and this will be reflected in higher incident rates.

* The ratios given on the offence of murder are calculated for the number of victims, not incidents, and must be treated with caution since for LGAs with relatively small populations a single murder victim will result in relatively high ratio to state.

**TABLE 3.3C: NUMBER OF RECORDED CRIMINAL INCIDENTS FOR MAJOR OFFENCES,
OVER THE 12 MONTHS TO DECEMBER 2017, NSW LGAs**

NSW LGA	Murder *	Domestic violence related assault	Non-domestic violence related assault	Sexual assault	Indecent assault, act of indecentcy and other sexual offences	Robbery without a weapon	Robbery with a firearm	Robbery with a weapon not a firearm	Break and enter dwelling	Break and enter non- dwelling	Motor vehicle theft	Steal from motor vehicle	Steal from retail store	Steal from dwelling	Steal from person	Fraud	Malicious damage to property
Albury	0	278	329	56	93	9	2	2	365	132	152	622	242	245	14	361	714
Armidale Regional	1	183	205	36	38	10	1	8	276	100	47	223	177	166	20	166	467
Ballina	0	104	184	25	37	5	0	3	123	90	76	254	101	110	15	188	339
Balranald	0	6	14	2	0	0	0	0	5	7	3	7	0	8	0	5	30
Bathurst Regional	0	216	251	59	67	7	2	2	242	77	65	280	126	119	24	233	618
Bayside	1	516	451	71	92	30	5	19	316	105	228	638	417	310	90	1,027	982
Bega Valley	0	107	122	31	36	3	0	0	70	47	19	129	47	50	4	100	273
Bellingen	0	34	43	8	11	0	0	0	23	23	25	37	5	34	4	26	83
Berrigan	0	13	14	6	5	0	0	0	23	15	5	23	7	18	0	17	53
Blacktown	4	2,022	1,657	287	362	135	8	78	1,552	303	852	2,709	1,285	947	281	3,232	3,364
Bland	0	19	17	8	10	0	0	0	12	12	9	18	4	6	0	22	27
Blayney	0	38	25	5	13	0	1	0	26	15	14	26	2	16	2	16	50
Blue Mountains	0	262	224	73	65	10	0	2	164	63	59	194	71	137	26	329	601
Bogan	0	20	25	2	6	0	0	0	9	4	10	21	8	10	1	10	33
Bourke	0	89	51	20	15	1	0	1	106	28	17	69	57	40	1	23	121
Brewarrina	0	43	34	10	8	0	0	0	50	32	5	23	6	12	1	17	47
Broken Hill	0	181	159	20	34	3	0	2	210	62	49	168	45	103	6	60	361
Burwood	1	84	133	12	25	15	0	4	111	35	35	139	305	81	35	399	146
Byron	1	112	252	31	52	6	1	1	110	63	63	183	98	121	49	185	326
Cabonne	0	23	15	14	13	0	0	0	29	22	14	24	2	25	0	42	38
Camden	0	306	144	57	89	7	0	3	150	51	84	237	117	116	5	382	402
Campbelltown	2	803	653	158	177	43	4	23	587	191	272	845	815	390	76	877	1,428
Canada Bay	1	112	134	23	39	6	1	5	256	78	113	397	94	164	31	572	367
Canterbury-Bankstown	5	1,259	1,093	172	194	78	10	39	860	226	666	1,640	584	538	97	2,335	1,920
Carrathool	0	10	11	2	6	0	0	0	7	3	2	11	1	5	0	4	23
Central Coast	5	1,640	1,435	277	383	53	3	34	1,099	407	746	1,733	844	796	170	2,092	3,085
Central Darling	0	85	37	6	5	0	0	0	41	20	7	25	1	6	2	2	50
Cessnock	0	355	246	68	75	5	1	8	401	174	338	513	135	265	34	292	697
Clarence Valley	0	227	252	40	56	4	1	2	188	113	87	230	120	245	24	269	530
Cobar	0	33	43	8	14	0	0	0	24	18	15	44	2	11	0	16	93
Coffs Harbour	0	471	490	106	135	13	0	19	398	209	147	365	189	271	43	402	737
Coolamon	1	15	11	4	4	0	0	0	11	15	10	5	4	8	0	6	15
Coonamble	0	53	41	7	7	3	0	0	98	50	16	52	15	25	2	25	105
Cootamundra-Gundagai	0	56	42	13	13	0	0	1	42	12	8	40	16	36	1	94	97
Cowra	0	62	88	23	20	1	0	0	121	33	12	63	25	59	4	70	148
Cumberland	2	829	801	136	163	90	6	39	825	228	416	1,168	416	403	102	1,797	1,192
Dubbo Regional	0	346	411	79	100	8	0	10	614	141	220	621	338	256	39	364	974
Dungog	0	25	25	6	11	0	0	0	14	10	12	8	1	24	0	23	47
Edward River	0	38	42	11	14	0	0	0	40	15	8	53	18	38	3	28	118
Eurobodalla	0	157	207	31	42	4	0	3	159	70	55	176	86	104	6	140	391
Fairfield	0	727	667	112	141	66	7	53	539	136	355	845	356	249	101	1,402	1,121
Federation	0	32	30	8	11	0	0	0	33	33	11	44	12	48	3	41	101
Forbes	1	57	72	6	12	0	0	0	72	51	21	58	23	61	1	47	161
Georges River	0	439	364	52	78	30	1	5	220	78	139	410	316	182	63	955	720
Gilgandra	0	40	15	9	5	1	0	1	22	9	3	17	7	24	1	19	31
Glen Innes Severn	0	71	78	16	12	3	0	1	69	55	22	34	9	56	2	49	159
Goulburn Mulwaree	0	127	122	50	42	1	0	1	66	29	27	137	143	89	2	166	225
Greater Hume Shire	0	18	13	7	14	1	0	0	26	17	16	27	6	23	1	31	43
Griffith	0	211	139	20	21	3	0	9	158	76	67	314	118	98	9	86	393
Gunnedah	0	62	88	12	12	0	0	1	65	11	28	45	39	76	0	66	152
Gwydir	0	19	15	4	6	0	0	0	6	7	7	12	1	16	0	14	36
Hawkesbury	0	249	192	50	72	4	0	4	132	85	121	251	157	102	18	303	385
Hay	0	17	20	1	4	0	0	0	19	8	5	14	6	14	1	7	84
Hilltops	0	99	98	44	33	2	0	2	58	36	20	51	37	50	1	88	225
Hornsby	0	158	227	59	74	13	0	0	314	104	98	432	331	180	40	599	645
Hunters Hill	0	22	28	7	9	0	1	0	46	13	23	52	4	29	3	53	80
Inner West	1	428	636	101	136	41	5	25	504	166	265	805	373	483	118	1,385	1,319
Inverell	0	86	123	21	31	0	0	0	93	59	36	69	60	98	4	54	265
Junee	0	10	18	5	5	0	0	0	24	19	8	29	3	23	0	2	53
Kempsey	0	219	205	41	43	6	2	2	262	121	93	185	157	168	27	110	381
Kiama	0	34	31	10	15	1	0	2	52	28	39	135	8	39	4	57	91
Ku-ring-gai	0	71	95	38	43	4	0	1	347	76	51	220	51	145	24	448	348
Kyogle	0	46	27	10	5	0	0	0	31	24	13	17	6	21	0	14	59
Lachlan	0	58	44	7	16	0	0	0	37	41	22	32	8	41	1	13	74
Lake Macquarie	1	801	630	179	221	17	4	19	633	294	535	1,172	730	504	75	1,167	1,942

TABLE 3.3C: NUMBER OF RECORDED CRIMINAL INCIDENTS FOR MAJOR OFFENCES, OVER THE 12 MONTHS TO DECEMBER 2017, NSW LGAs

NSW LGA	Murder *	Domestic violence related assault	Non-domestic violence related assault	Sexual assault	Indecent assault, act of indecency and other sexual offences	Robbery without a weapon	Robbery with a firearm	Robbery with a weapon not a firearm	Break and enter dwelling	Break and enter non-dwelling	Motor vehicle theft	Steal from motor vehicle	Steal from retail store	Steal from dwelling	Steal from person	Fraud	Malicious damage to property
Lane Cove	0	33	52	19	12	1	0	0	141	44	34	119	26	57	9	134	106
Leeton	0	63	73	18	22	1	0	1	69	31	31	56	29	42	2	43	120
Lismore	0	175	281	67	59	10	1	3	190	68	108	233	124	162	16	150	458
Lithgow	0	99	123	21	21	2	0	2	118	46	41	74	36	87	8	138	264
Liverpool	1	860	739	131	190	61	5	23	795	224	408	1,224	778	435	108	1,678	1,395
Liverpool Plains	0	35	39	5	15	0	0	0	26	34	19	19	6	33	0	22	102
Lockhart	0	11	12	3	1	0	0	0	4	5	3	6	0	4	0	4	18
Lord Howe Island	0	1	1	0	0	0	0	0	0	2	0	0	0	1	0	2	3
Maitland	0	439	327	71	105	9	2	8	370	155	223	716	325	337	25	481	875
Mid-Coast	1	405	420	107	113	17	0	11	459	279	174	353	233	371	30	359	977
Mid-Western Regional	1	107	113	36	34	1	0	0	107	25	33	123	30	89	6	83	254
Moree Plains	0	219	177	44	37	15	3	12	399	219	118	280	147	157	16	96	649
Mosman	0	51	37	14	17	2	0	2	68	24	21	90	29	62	5	114	122
Murray River	1	14	19	2	3	1	0	1	24	30	12	42	15	22	1	36	58
Murrumbidgee	0	26	16	2	2	0	0	0	12	12	7	11	2	16	0	9	32
Muswellbrook	0	93	93	22	24	4	1	4	155	46	40	108	53	58	5	52	223
Nambucca	0	105	84	32	39	1	0	4	106	84	40	149	58	64	6	85	269
Narrabri	1	76	88	13	11	0	0	0	69	23	35	75	22	62	2	74	169
Narrandera	0	35	31	7	7	0	0	1	88	79	25	65	20	23	0	17	74
Narromine	0	56	45	10	20	1	0	0	58	58	19	53	13	39	4	21	101
Newcastle	1	664	1,090	184	269	28	4	37	973	433	505	2,195	852	747	175	1,618	2,236
North Sydney	0	134	198	24	34	12	1	6	161	75	41	220	168	220	45	493	347
Northern Beaches	1	356	610	97	128	21	0	9	447	206	243	919	488	417	87	1,198	1,133
Oberon	1	19	20	3	0	0	0	0	16	12	3	7	4	12	1	21	47
Orange	0	268	228	58	80	7	0	11	331	83	129	290	260	136	17	199	587
Parkes	1	83	93	17	25	0	0	0	49	39	18	62	32	68	1	75	237
Parramatta	1	725	794	121	186	69	13	22	896	232	317	1,383	872	586	220	1,937	1,393
Penrith	1	1,115	949	206	244	56	4	38	810	219	519	1,381	828	543	137	1,807	1,950
Port Macquarie-Hastings	0	246	257	62	70	7	0	9	191	174	117	245	196	241	20	344	645
Port Stephens	0	313	241	63	87	0	2	3	236	107	127	292	174	176	8	348	644
Queanbeyan-Palerang Regional	1	132	172	31	35	4	0	0	168	60	107	332	160	126	8	195	495
Randwick	2	354	501	75	100	35	3	16	370	99	172	456	290	362	97	959	719
Richmond Valley	0	149	139	32	38	2	0	2	114	50	47	89	63	67	6	108	220
Ryde	0	205	239	42	78	8	3	6	362	98	87	363	541	191	39	820	571
Shellharbour	0	237	190	58	58	11	2	8	214	72	131	351	258	140	15	246	533
Shoalhaven	0	339	391	109	127	6	1	9	410	146	144	424	332	213	13	385	853
Singleton	0	110	102	23	32	5	0	1	89	57	58	102	62	72	1	101	158
Snowy Monaro Regional	0	58	74	23	18	0	0	0	37	12	2	41	11	16	1	59	152
Snowy Valleys	0	67	69	16	24	1	0	0	115	46	28	146	22	70	7	40	211
Strathfield	0	132	154	15	24	5	2	8	189	36	54	254	75	73	46	469	219
Sutherland Shire	1	479	585	112	129	13	0	12	354	116	207	746	541	304	69	835	1,262
Sydney	1	1,010	3,208	245	479	187	8	79	704	581	331	1,163	3,101	1,002	1,213	4,537	2,488
Tamworth Regional	0	344	422	70	86	9	1	7	545	158	120	560	260	259	27	318	910
Temora	0	27	26	3	1	0	0	0	28	7	10	22	12	21	0	15	49
Tenterfield	0	36	44	2	10	0	0	2	34	15	10	28	5	34	1	21	76
The Hills Shire	0	216	260	61	51	5	0	3	362	76	111	497	285	200	34	797	483
Tweed	3	291	291	46	76	6	2	6	230	93	147	355	158	192	32	403	629
Unincorporated Far West	0	1	3	1	2	0	0	1	1	0	1	3	4	1	0	0	3
Upper Hunter Shire	0	27	38	13	19	0	0	0	44	42	25	33	12	40	2	46	92
Upper Lachlan Shire	0	8	13	3	6	0	0	0	11	6	2	13	1	18	0	16	31
Uralla	0	21	9	7	3	0	0	0	11	4	7	11	0	12	0	17	25
Wagga Wagga	1	376	416	63	60	8	0	10	772	165	185	554	361	334	35	312	946
Walcha	1	9	15	7	8	0	0	0	3	1	2	9	1	7	1	4	12
Walgett	0	146	95	13	10	0	0	0	110	39	26	58	24	50	0	32	223
Warren	0	24	22	3	3	0	0	0	22	11	8	21	6	16	3	10	70
Warrumbungle Shire	0	50	40	21	14	0	1	0	40	18	12	26	19	31	2	34	96
Waverley	0	154	322	45	64	12	1	2	163	33	110	231	571	200	52	530	474
Weddin	0	13	6	2	4	0	0	0	4	2	3	6	4	15	1	10	38
Wentworth	1	59	62	14	8	4	0	0	53	31	31	60	6	28	2	16	126
Willoughby	1	76	181	24	54	7	0	5	208	88	48	216	596	125	48	479	315
Wingecarribee	0	103	110	31	42	2	0	0	70	67	38	82	51	77	4	166	324
Wollondilly	0	164	84	28	33	2	0	2	86	41	57	77	21	51	2	149	287
Wollongong	0	653	840	145	167	43	4	27	719	286	363	1,279	900	581	75	843	1,845
Woollahra	0	93	136	26	41	1	0	0	155	30	63	199	80	148	46	305	282
Yass Valley	0	26	26	8	11	0	0	0	26	33	9	16	17	23	0	48	63
In Custody	2	8	1,092	56	29	4	0	0	0	2	1	2	0	0	0	10	86
NSW	52	28,356	32,015	5,804	7,389	1,448	130	847	27,776	10,564	13,173	39,035	24,457	19,503	4,547	48,397	61,039

* For murder the count given is for the number of victims, not incidents.

**TABLE 3.3D: NUMBER OF RECORDED CRIMINAL INCIDENTS FOR MAJOR OFFENCES,
OVER THE 12 MONTHS TO DECEMBER 2016, NSW LGAs**

NSW LGA	Murder *	Domestic violence related assault	Non-domestic violence related assault	Sexual assault	Indecent assault, act of indecency and other sexual offences	Robbery without a weapon	Robbery with a firearm	Robbery with a weapon not a firearm	Break and enter dwelling	Break and enter non-dwelling	Motor vehicle theft	Steal from motor vehicle	Steal from retail store	Steal from dwelling	Steal from person	Fraud	Malicious damage to property
Albury	2	284	294	46	67	12	3	6	376	142	107	554	301	246	26	274	686
Armidale Regional	0	152	198	40	27	4	0	5	296	167	65	512	165	153	18	255	672
Ballina	0	109	137	29	37	4	0	0	127	92	40	217	110	132	13	215	339
Balranald	0	5	14	1	3	0	0	0	8	10	4	7	2	17	0	4	23
Bathurst Regional	0	186	196	34	51	8	0	6	328	131	105	336	201	147	19	291	502
Bayside	0	521	452	53	88	34	1	14	363	107	220	536	341	320	110	1,201	964
Bega Valley	0	106	116	25	27	0	0	1	79	75	28	163	61	85	8	108	275
Bellingen	0	36	34	7	8	0	0	1	21	42	12	39	9	22	0	32	78
Berrigan	0	15	12	1	6	0	0	0	18	18	5	10	1	35	0	14	60
Blacktown	3	2,066	1,575	245	325	180	18	54	1,553	368	780	2,433	1,076	967	312	2,854	3,409
Bland	0	21	19	3	10	0	0	0	8	8	11	19	7	5	0	17	45
Blayney	0	15	16	10	6	1	0	0	48	23	15	33	3	18	0	21	50
Blue Mountains	1	250	200	77	63	11	3	5	167	89	72	206	88	161	22	314	591
Bogan	0	27	12	1	3	0	0	0	24	11	14	20	5	12	0	8	39
Bourke	0	92	50	12	9	0	0	3	117	58	25	100	67	44	3	43	192
Brewarrina	1	48	30	7	4	0	0	2	37	31	9	16	6	7	0	6	51
Broken Hill	0	160	133	31	29	2	0	0	151	55	55	170	62	137	10	74	280
Burwood	0	72	132	8	35	8	1	0	161	31	30	173	267	99	39	565	203
Byron	0	97	231	25	36	2	0	2	151	85	68	295	111	136	56	256	318
Cabonne	0	29	30	5	17	1	0	0	37	22	21	25	3	23	0	25	66
Camden	0	223	176	30	58	3	1	3	172	84	96	181	123	143	9	441	443
Campbelltown	2	933	721	147	200	47	7	21	764	214	338	1,000	744	419	101	1,113	1,751
Canada Bay	1	108	138	21	36	9	1	5	254	64	99	351	84	225	32	703	325
Canterbury-Bankstown	12	1,346	1,051	136	183	72	8	50	742	236	705	1,702	560	517	110	2,707	2,055
Carrathool	0	9	23	3	5	0	0	0	13	9	4	9	1	5	0	10	28
Central Coast	3	1,759	1,477	298	396	34	10	28	1,402	479	763	2,140	944	785	151	2,055	3,509
Central Darling	0	87	45	1	6	0	0	0	67	26	10	26	1	12	0	5	54
Cessnock	0	358	268	56	65	10	4	10	420	215	297	527	181	290	22	348	574
Clarence Valley	0	222	291	53	50	1	0	11	313	116	110	287	125	245	13	255	582
Cobar	0	42	34	2	5	2	0	0	48	22	22	36	16	22	1	26	92
Coffs Harbour	0	511	384	97	109	10	1	11	302	221	139	377	275	239	50	386	807
Coolamon	0	12	10	1	10	0	0	0	11	6	5	4	5	14	0	7	35
Coonamble	0	48	48	2	13	0	0	1	110	40	15	65	31	42	1	21	116
Cootamundra-Gundagai	0	48	39	9	10	0	0	0	35	13	12	31	9	41	0	112	115
Cowra	0	72	88	12	19	2	1	1	162	38	32	77	29	65	2	57	197
Cumberland	2	864	739	110	148	58	15	31	878	220	396	1,151	391	473	156	1,640	1,270
Dubbo Regional	1	404	385	81	102	9	3	12	961	250	308	997	395	375	56	347	1,070
Dungog	0	24	32	7	10	0	0	0	27	23	14	20	2	15	1	17	55
Edward River	0	60	26	12	11	0	0	0	32	26	12	37	13	34	2	25	93
Eurobodalla	0	142	181	16	42	4	1	0	207	72	75	216	141	108	11	135	342
Fairfield	4	735	645	87	107	53	9	46	491	184	411	1,031	311	305	89	1,245	1,184
Federation	0	31	41	7	8	1	0	1	47	31	18	41	11	58	1	38	79
Forbes	1	81	67	14	11	0	0	0	98	56	19	73	9	51	5	44	156
Georges River	0	442	353	32	71	21	4	10	299	107	129	397	362	202	70	827	842
Gilgandra	0	33	23	4	11	1	0	2	37	10	4	15	7	22	0	19	58
Glen Innes Severn	0	106	72	11	17	1	0	3	94	44	20	91	35	60	1	39	149
Goulburn Mulwaree	0	105	123	34	38	3	0	0	76	45	33	150	84	76	4	156	271
Greater Hume Shire	0	18	14	16	8	1	0	0	25	20	12	32	9	19	0	26	52
Griffith	0	242	168	17	30	10	0	10	180	83	54	201	151	95	1	106	316
Gunnedah	0	77	72	15	21	0	0	0	66	37	18	42	26	50	3	48	191
Gwydir	0	15	18	2	7	0	0	0	11	9	5	15	4	20	0	9	43
Hawkesbury	0	258	240	44	62	5	2	9	185	94	138	393	158	183	28	332	489
Hay	0	24	28	1	7	0	0	0	11	14	5	12	4	13	0	12	67
Hilltops	0	72	89	21	41	1	0	0	60	18	24	58	42	52	1	60	228
Hornsby	1	152	236	47	76	4	0	3	270	91	67	299	252	172	34	603	589
Hunters Hill	0	15	24	4	7	2	0	1	43	11	15	42	4	22	6	41	48
Inner West	0	427	622	90	144	32	3	35	503	161	271	937	435	587	92	1,597	1,363
Inverell	1	101	116	18	33	1	0	0	163	33	13	84	58	84	4	84	228
Junee	0	41	41	9	11	0	0	1	22	11	8	13	5	20	0	17	67
Kempsey	0	229	160	34	38	4	0	7	312	89	84	206	106	179	10	141	452
Kiama	0	24	60	8	10	2	0	1	30	40	26	101	15	32	10	56	101
Ku-ring-gai	0	76	74	40	47	5	0	1	358	76	39	252	50	153	14	478	339
Kyogle	0	45	35	7	18	0	0	0	32	29	18	21	5	27	0	38	86
Lachlan	0	55	54	12	10	0	0	0	42	21	11	46	11	40	1	21	98
Lake Macquarie	1	741	646	156	205	32	2	18	734	331	528	1,205	688	588	82	1,367	1,851

TABLE 3.3D: NUMBER OF RECORDED CRIMINAL INCIDENTS FOR MAJOR OFFENCES, OVER THE 12 MONTHS TO DECEMBER 2016, NSW LGAs

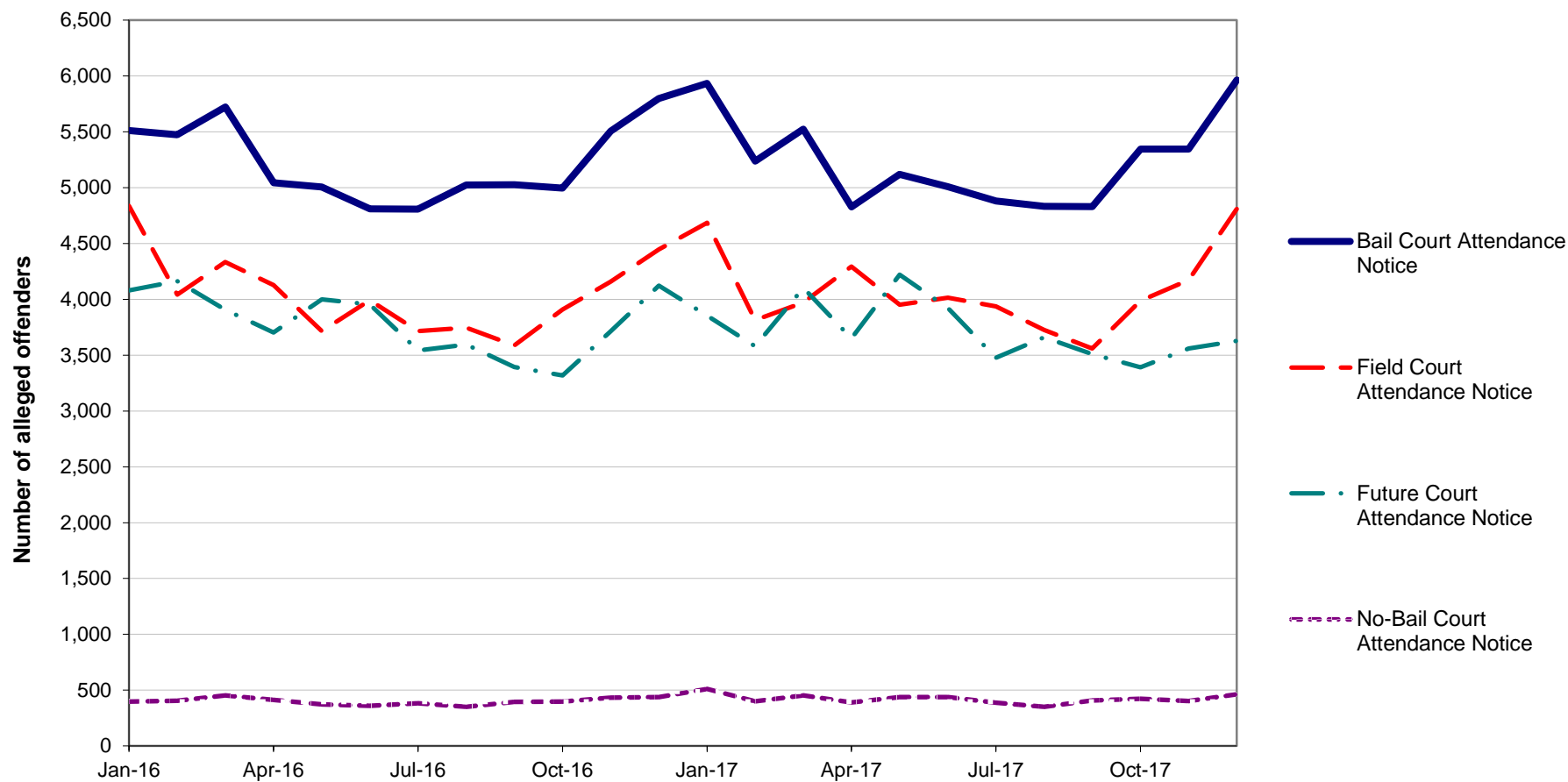
NSW LGA	Murder *	Domestic violence related assault	Non-domestic violence related assault	Sexual assault	Indecent assault, act of indecency and other sexual offences	Robbery without a weapon	Robbery with a firearm	Robbery with a weapon not a firearm	Break and enter dwelling	Break and enter non-dwelling	Motor vehicle theft	Steal from motor vehicle	Steal from retail store	Steal from dwelling	Steal from person	Fraud	Malicious damage to property
Lane Cove	0	45	47	8	7	0	0	1	73	37	16	76	17	52	3	147	101
Leeton	0	57	65	10	9	2	0	1	92	47	23	52	24	40	1	28	129
Lismore	2	175	283	78	108	5	0	7	211	78	98	249	161	135	27	242	476
Lithgow	2	85	125	15	22	4	0	3	129	92	52	92	45	95	7	150	316
Liverpool	4	983	713	151	219	39	3	27	823	196	425	1,317	860	539	124	1,772	1,348
Liverpool Plains	0	67	41	4	14	0	0	0	33	43	14	18	16	32	0	29	85
Lockhart	0	7	4	2	2	0	0	0	13	12	1	4	1	10	0	4	22
Lord Howe Island	0	2	4	0	5	0	0	0	0	0	0	1	0	0	0	0	0
Maitland	1	495	323	62	80	9	2	12	430	161	218	857	293	395	33	353	847
Mid-Coast	1	458	397	111	141	4	0	8	493	372	153	276	180	384	24	364	958
Mid-Western Regional	0	124	134	27	32	0	1	0	89	40	24	95	38	104	3	86	244
Moree Plains	0	254	171	26	39	8	0	6	280	137	84	189	136	143	7	90	538
Mosman	0	33	37	5	22	1	0	1	44	22	10	71	17	63	9	89	131
Murray River	0	29	31	6	0	1	0	0	49	71	20	62	21	37	2	43	74
Murrumbidgee	0	17	11	4	6	0	0	0	8	14	8	6	3	7	0	6	29
Muswellbrook	0	93	92	23	25	0	0	2	156	69	59	130	81	85	9	66	252
Nambucca	0	100	144	36	41	1	0	2	90	54	46	106	53	79	9	78	221
Narrabri	0	98	87	11	12	1	1	1	107	43	34	79	38	71	4	42	225
Narrandera	0	27	33	6	9	1	1	0	48	41	14	30	34	26	1	10	62
Narromine	0	46	53	9	9	3	0	0	98	50	36	75	18	67	11	26	107
Newcastle	1	720	1,148	150	192	56	9	30	929	289	464	1,904	728	720	174	1,477	2,141
North Sydney	0	132	176	21	41	10	0	3	141	108	37	160	146	184	28	489	345
Northern Beaches	4	305	593	102	115	24	0	3	474	245	173	838	599	453	100	1,246	1,171
Oberon	0	15	16	5	6	0	0	1	20	7	10	16	6	13	0	12	43
Orange	0	254	253	59	69	5	4	15	401	142	146	405	294	200	27	331	546
Parkes	0	118	115	25	27	3	0	0	80	70	31	121	58	90	3	62	302
Parramatta	0	634	757	108	173	50	10	33	913	241	285	1,128	692	642	224	2,074	1,379
Penrith	3	1,054	920	169	236	59	4	34	740	284	516	995	808	580	154	1,673	1,948
Port Macquarie-Hastings	0	254	321	65	86	3	1	9	193	99	111	281	200	222	26	327	535
Port Stephens	0	353	292	77	73	3	0	11	375	131	140	416	171	248	16	392	784
Queanbeyan-Palerang Regional	0	161	174	29	27	2	1	2	167	78	112	341	192	121	9	174	488
Randwick	1	371	486	61	100	20	0	28	387	88	213	576	222	434	86	1,005	730
Richmond Valley	0	131	139	32	40	2	0	4	150	61	54	156	42	85	4	112	400
Ryde	1	206	262	34	49	5	0	2	295	50	73	389	317	197	50	791	480
Shellharbour	0	234	237	52	67	9	2	7	223	119	150	481	187	167	18	274	495
Shoalhaven	0	393	438	101	132	8	1	9	457	170	158	477	293	254	10	483	895
Singleton	0	84	69	18	18	1	0	1	102	72	70	112	63	87	10	66	179
Snowy Monaro Regional	0	54	75	20	27	0	0	0	35	21	13	45	21	31	2	43	136
Snowy Valleys	0	87	63	13	22	0	0	1	91	49	16	100	29	87	4	48	233
Strathfield	0	108	146	21	35	12	0	2	210	50	92	237	54	154	49	460	245
Sutherland Shire	2	487	605	66	135	12	1	5	350	127	194	611	517	279	64	909	1,309
Sydney	3	964	3,287	207	353	189	8	65	802	600	319	1,630	2,631	1,058	1,405	5,637	2,746
Tamworth Regional	1	336	330	74	88	9	0	8	493	115	108	418	266	329	20	333	799
Temora	0	14	24	5	7	0	0	0	23	12	7	22	10	21	0	22	59
Tenterfield	0	46	30	7	10	0	0	1	49	16	10	24	18	46	1	34	85
The Hills Shire	1	207	239	44	77	11	5	8	400	121	117	409	262	219	41	849	512
Tweed	1	289	276	61	58	11	0	7	235	133	162	374	188	203	40	471	562
Unincorporated Far West	0	2	1	2	0	0	0	0	1	3	1	5	3	2	0	2	3
Upper Hunter Shire	0	37	40	9	15	0	1	0	46	34	29	59	17	47	1	29	145
Upper Lachlan Shire	0	19	11	4	3	0	0	0	13	4	3	3	0	15	0	9	27
Uralla	0	22	14	7	24	0	0	1	6	4	4	5	1	15	0	17	22
Wagga Wagga	2	399	396	72	72	11	0	10	714	88	151	685	363	390	30	288	955
Walcha	0	9	8	2	2	0	0	0	4	7	0	5	0	5	2	9	19
Walgett	1	117	81	10	8	0	0	0	62	46	17	43	24	41	1	23	209
Warren	0	37	38	21	10	0	0	0	29	4	10	26	7	11	0	8	50
Warrumbungle Shire	1	49	45	18	20	0	0	1	41	30	13	51	14	35	1	35	121
Waverley	0	170	359	33	51	6	3	0	161	39	87	237	673	224	63	502	492
Weddin	0	9	6	3	4	0	0	0	7	10	5	7	0	8	0	7	34
Wentworth	0	58	30	7	10	0	0	0	46	31	13	40	6	31	1	23	85
Willoughby	0	73	143	24	43	7	1	2	171	110	36	196	554	91	48	562	275
Wingecarribee	0	125	94	20	37	3	0	1	97	69	40	120	86	145	8	166	387
Wollondilly	0	185	92	39	51	3	1	0	92	52	48	107	13	81	5	184	214
Wollongong	2	792	826	148	141	39	6	20	835	469	386	1,375	856	594	88	825	1,821
Woollahra	0	89	120	24	34	5	0	0	185	32	53	174	67	158	63	291	301
Yass Valley	0	34	37	12	10	0	0	1	23	12	6	33	10	21	1	46	71
In Custody	0	5	1,090	49	19	0	0	2	0	3	1	2	0	0	0	11	169
NSW	70	29,145	31,755	5,208	6,986	1,364	164	829	29,713	11,708	13,127	40,479	23,542	21,347	4,961	50,847	62,815

* For murder the count given is for the number of victims, not incidents.

SECTION 4:

**METHODS OF PROCEEDINGS
AGAINST ALLEGED OFFENDERS**

Figure 4.1: TRENDS IN REFERRAL METHODS FOR ALLEGED OFFENDERS PROCEEDED AGAINST TO COURT, OVER THE 24 MONTHS TO DECEMBER 2017*, NSW



Trends:

Bail Court Attendance Notice shows no statistically significant trend for the 24 month period.

Field Court Attendance Notice shows no statistically significant trend for the 24 month period.

Future Court Attendance Notice shows no statistically significant trend for the 24 month period.

No-Bail Court Attendance Notice shows no statistically significant trend for the 24 month period.

* The date alleged offenders were proceeded against, rather than the date the incident was recorded.

**TABLE 4.1: NUMBER, PERCENTAGE AND TREND[^] IN ALLEGED OFFENDERS PROCEEDED AGAINST
BY NSW POLICE BY METHOD OF LEGAL PROCEEDINGS OVER THE 24 MONTHS TO DECEMBER 2017*, NSW**

<i>Type of process</i>	<i>Number of alleged offenders with proceedings commenced</i>		<i>Trend[^] over the 24 months to December 2017</i>	
	<i>over the 12 months to December 2016</i>	<i>over the 12 months to December 2017</i>	<i>Change</i>	<i>Annual percentage change</i>
Proceeded against to court:				
Bail Court Attendance Notice	62,730	62,856	126	Stable
No-Bail Court Attendance Notice	4,796	5,069	273	Stable
Future Court Attendance Notice	45,491	44,555	-936	Stable
Field Court Attendance Notice	48,613	48,926	313	Stable
All proceedings to court	161,630	161,406	-224	Stable
Proceeded against other than to court:				
Youth Justice Conference	562	687	125	22.2%
Caution Young Offenders	6,858	7,400	542	7.9%
Cannabis Caution	5,578	5,443	-135	Stable
Criminal Infringement Notice	9,704	9,549	-155	Stable
Infringement Notice	695,012	718,961	23,949	3.4%
Liquor Offence Compliance Notice	415	369	-46	Stable
YOA warnings from 2010	9,783	10,487	704	Stable
All proceedings other than to court	727,912	752,896	24,984	3.4%
All proceedings	889,542	914,302	24,760	Stable

[^] For further explanation of **trend results**, see page 42, Notes [5] and [6].

* The date alleged offenders were proceeded against, rather than the date the incident was recorded.

TABLE 4.2: NUMBER, PERCENTAGE AND TREND[^] IN ALLEGED OFFENDERS PROCEEDED AGAINST TO COURT BY NSW POLICE FOR MAJOR OFFENCES OVER THE 24 MONTHS TO DECEMBER 2017^{}, NSW**

Offence category	Over the 12 months to December 2016			Over the 12 months to December 2017			Trend [^] over the last 24 months	
	Number proceeded against to court	Total number proceeded against	% proceeded against to court	Number proceeded against to court	Total number proceeded against	% proceeded against to court	Change in number proceeded against to court	Annual percentage change
Murder *	78	78	100.0%	76	76	100.0%	-2	Stable
Domestic violence related assault	12,323	12,669	97.3%	12,356	12,736	97.0%	33	Stable
Non-domestic violence related assault	7,457	8,489	87.8%	7,621	8,850	86.1%	164	Stable
Sexual assault	788	788	100.0%	869	869	100.0%	81	Stable
Indecent assault, act of indecency and other sexual offences	1,385	1,441	96.1%	1,401	1,458	96.1%	16	Stable
Robbery without a weapon	614	617	99.5%	733	743	98.7%	119	19.4%
Robbery with a firearm	122	122	100.0%	111	111	100.0%	-11	Stable
Robbery with a weapon not a firearm	505	505	100.0%	550	550	100.0%	45	8.9%
Break and enter dwelling	3,189	3,392	94.0%	3,097	3,300	93.8%	-92	Stable
Break and enter non-dwelling	1,743	1,962	88.8%	1,858	2,210	84.1%	115	Stable
Motor vehicle theft	1,391	1,496	93.0%	1,500	1,672	89.7%	109	Stable
Steal from motor vehicle	1,138	1,300	87.5%	1,275	1,482	86.0%	137	Stable
Steal from retail store	5,287	10,819	48.9%	5,346	11,125	48.1%	59	Stable
Steal from dwelling	619	753	82.2%	604	786	76.8%	-15	-2.4%
Steal from person	373	429	87.0%	445	503	88.5%	72	Stable
Fraud	4,245	4,494	94.5%	4,518	4,774	94.6%	273	Stable
Malicious damage to property	5,606	6,654	84.3%	5,615	6,661	84.3%	9	Stable

[^] For further explanation of **trend results**, see page 42, Notes [5] and [6].

* For murder, the trend test is applied to the monthly number of recorded victims rather than criminal incidents.

** The date alleged offenders were proceeded against, rather than the date the incident was recorded.

SECTION 5:

**CLEARED CRIMINAL INCIDENTS
AND WHETHER LEGAL PROCEEDINGS
COMMENCED FOR SELECTED OFFENCES**

**TABLE 5.1: NUMBER OF RECORDED CRIMINAL INCIDENTS FOR SELECTED OFFENCES BY WHETHER
LEGAL PROCEEDINGS COMMENCED IN 30 DAYS OF REPORTING, OVER THE 24 MONTHS TO NOVEMBER 2017, NSW**

Type of offence	Recorded criminal incidents over the 12 months to November 2016				Recorded criminal incidents over the 12 months to November 2017			
	Total number recorded	Cleared within 30 days of reporting			Total number recorded	Cleared within 30 days of reporting		
		Total number cleared [#]	Proceedings commenced within 30 days ^{##}	% proceedings commenced within 30 days		Total number cleared [#]	Proceedings commenced within 30 days ^{##}	% proceedings commenced within 30 days
Murder*	70	44	41	58.6	55	35	34	61.8
Domestic violence related assault	29,086	22,779	17,939	61.7	28,273	22,429	17,695	62.6
Non-domestic violence related assault	31,586	13,262	7,573	24.0	32,182	13,637	7,850	24.4
Sexual assault	5,187	1,078	434	8.4	5,746	1,191	460	8.0
Indecent assault, act of indecency and other sexual offences	6,991	1,962	1,090	15.6	7,430	2,220	1,231	16.6
Abduction and kidnapping	245	103	90	36.7	207	92	83	40.1
Robbery without a weapon	1,378	399	361	26.2	1,426	410	365	25.6
Robbery with a firearm	151	44	43	28.5	148	49	45	30.4
Robbery with a weapon not a firearm	814	281	269	33.0	831	287	276	33.2
Intimidation, stalking and harassment	30,622	18,303	11,357	37.1	30,320	18,119	11,416	37.7
Break and enter dwelling	30,137	2,261	1,876	6.2	27,827	2,133	1,770	6.4
Break and enter non-dwelling	11,694	973	873	7.5	10,636	1,050	947	8.9
Motor vehicle theft	13,164	1,022	848	6.4	13,202	1,050	866	6.6
Steal from motor vehicle	40,661	1,260	996	2.4	39,128	1,321	1,076	2.7
Steal from retail store	23,410	11,058	9,146	39.1	24,610	11,516	9,762	39.7
Steal from dwelling	21,399	1,614	718	3.4	19,620	1,535	734	3.7
Steal from person	4,986	445	328	6.6	4,618	501	345	7.5
Stock theft	518	29	10	1.9	476	16	7	1.5
Fraud	51,468	4,195	3,456	6.7	48,537	4,175	3,345	6.9
Arson	5,491	419	189	3.4	5,987	458	182	3.0
Malicious damage to property	62,825	15,074	11,239	17.9	61,312	14,670	11,182	18.2

[#] Total number cleared includes both incidents where proceedings were commenced and those where no proceedings were commenced.

^{##} This includes incidents where a person was either proceeded against to court or proceeded against other than to court.

* Victims for whom incident was cleared.

**TABLE 5.2: NUMBER OF RECORDED CRIMINAL INCIDENTS FOR SELECTED OFFENCES BY WHETHER
LEGAL PROCEEDINGS COMMENCED IN 90 DAYS OF REPORTING, OVER THE 24 MONTHS TO SEPTEMBER 2017, NSW**

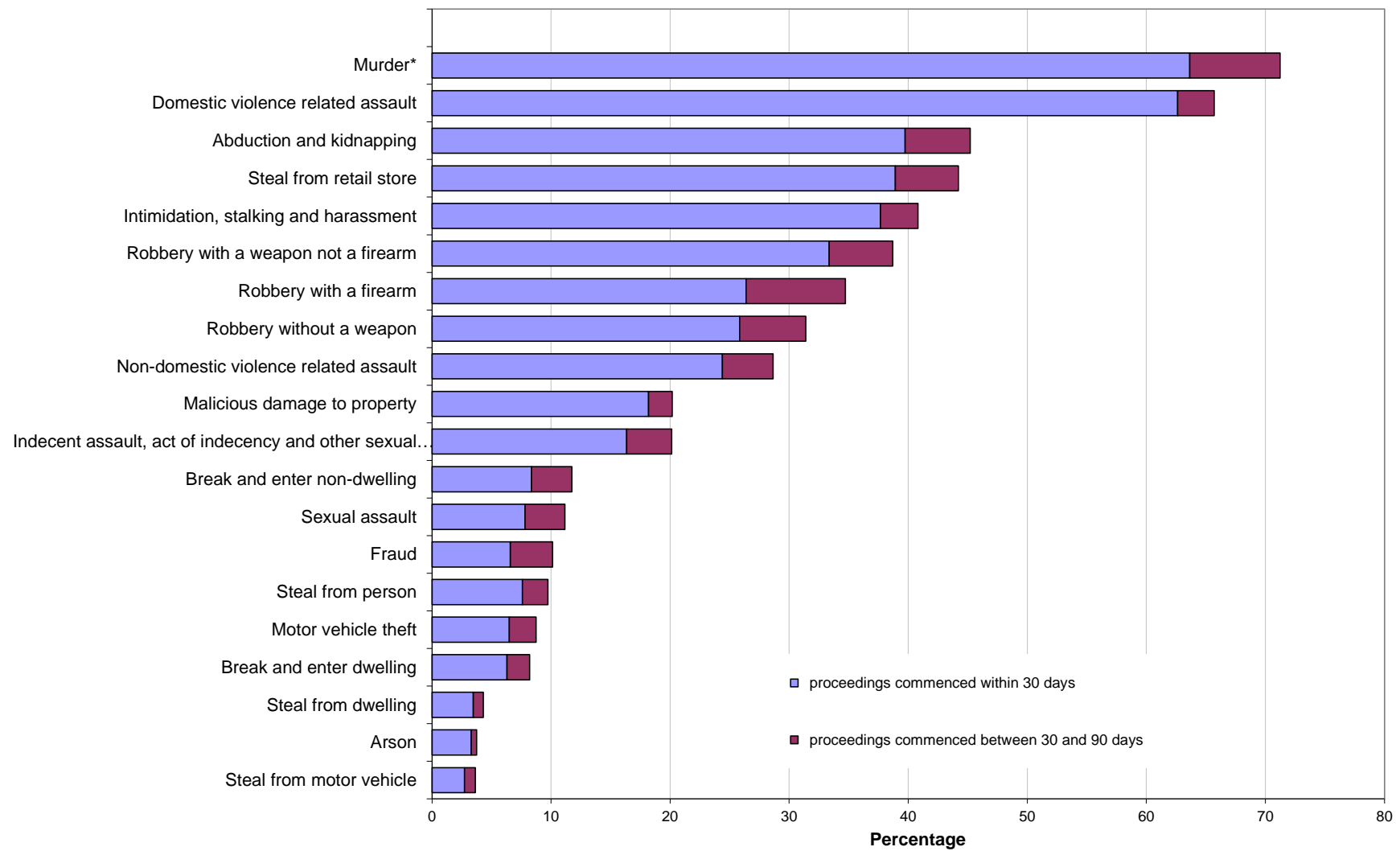
Type of offence	Recorded criminal incidents over the 12 months to September 2016				Recorded criminal incidents over the 12 months to September 2017			
	Total number recorded	Cleared within 90 days of reporting			Total number recorded	Cleared within 90 days of reporting		
		Total number cleared [#]	Proceedings commenced within 90 days ^{##}	% proceedings commenced within 90 days		Total number cleared [#]	Proceedings commenced within 90 days ^{##}	% proceedings commenced within 90 days
Murder*	67	48	45	67.2	66	49	47	71.2
Domestic violence related assault	29,323	24,440	18,892	64.4	28,393	23,788	18,652	65.7
Non-domestic violence related assault	31,622	15,349	8,999	28.5	32,065	15,628	9,190	28.7
Sexual assault	5,104	1,546	607	11.9	5,740	1,599	641	11.2
Indecent assault, act of indecency and other sexual offences	6,997	2,655	1,420	20.3	7,319	2,778	1,474	20.1
Abduction and kidnapping	250	116	98	39.2	219	114	99	45.2
Robbery without a weapon	1,379	460	416	30.2	1,440	511	452	31.4
Robbery with a firearm	160	65	61	38.1	144	56	50	34.7
Robbery with a weapon not a firearm	812	329	313	38.5	842	338	326	38.7
Intimidation, stalking and harassment	30,733	20,208	12,324	40.1	30,252	19,785	12,348	40.8
Break and enter dwelling	30,313	2,914	2,389	7.9	27,955	2,782	2,291	8.2
Break and enter non-dwelling	11,393	1,276	1,125	9.9	10,758	1,410	1,264	11.7
Motor vehicle theft	13,159	1,305	1,038	7.9	13,300	1,437	1,163	8.7
Steal from motor vehicle	40,369	1,593	1,260	3.1	39,064	1,716	1,420	3.6
Steal from retail store	23,183	12,394	10,458	45.1	24,326	12,632	10,755	44.2
Steal from dwelling	21,265	1,981	929	4.4	20,061	1,809	866	4.3
Steal from person	5,214	575	418	8.0	4,643	636	452	9.7
Stock theft	504	40	14	2.8	483	22	8	1.7
Fraud	52,055	6,464	5,232	10.1	48,257	6,130	4,883	10.1
Arson	5,361	425	189	3.5	5,972	525	223	3.7
Malicious damage to property	63,120	16,601	12,368	19.6	61,481	16,354	12,403	20.2

[#] Total number cleared includes both incidents where proceedings were commenced and those where no proceedings were commenced.

^{##} This includes incidents where a person was either proceeded against to court or proceeded against other than to court.

* Victims for whom incident was cleared.

Figure 5.1: PERCENTAGE OF RECORDED CRIMINAL INCIDENTS FOR SELECTED OFFENCES WHERE LEGAL PROCEEDINGS COMMENCED WITHIN 30 AND 90 DAYS, OVER THE 12 MONTHS TO SEPTEMBER 2017, NSW



* For murder the data are counts of recorded victims, not criminal incidents.

APPENDICES

APPENDIX 1: TRENDS IN RECORDED CRIMINAL INCIDENTS FOR NSW

[1] Irrespective of how trends in recorded crime are presented, their interpretation is a difficult task. The recorded criminal incident data presented in this report are based on information derived from the NSW Police Force Computerised Operational Policing System (COPS), so only those incidents which are reported to, or detected by, police are included. The trends in recorded crime shown in this report will, therefore, reflect movements in the underlying factors which influence the detection, reporting and recording of crime, as well as changes in the true level of crime in the community.

[2] An alternative measure of the level of crime in Australia is available from crime victim surveys, for example the national Crime Victimization Survey by the Australian Bureau of Statistics (ABS)¹. As well as providing an estimate of the victimisation rate at the State level for a selected set of offences, this survey estimates the proportion of crimes which are not reported to police, and are therefore not recorded in the official statistics. In particular, personal crimes, such as assault and robbery, are less likely to be reported than crimes which involve households. These surveys generally find that about half of physical assault victims aged 15 and over report the incident to police whereas break-ins are reported to police approximately three quarters of the time. Given that some offences have low reporting rates, it is possible that changes in recorded crime rates over time for these offences may be reflecting changes in reporting rates.

[3] Public willingness to report crime, however, is just one of the extraneous factors which can affect trends in recorded crime. Shifts in policing policy can also have a marked effect on the number of recorded drug offences, cases of offensive behaviour or of receiving stolen goods. For these offences, therefore, recorded rates probably do not accurately reflect actual rates. For this reason, the more detailed comparisons of crime rates and examination of trends in this document are restricted to offence categories which are more likely to be reported to, rather than detected by police.

[4] The interpretation of trends in official reports of crime can be considerably more difficult than the interpretation of trends in unemployment or inflation statistics. The ease with which recorded crime statistics can be misunderstood creates a temptation to offer an authoritative explanation for each major crime trend. Indeed, in many instances it is simply impossible to state with any assurance why a particular trend has appeared. This report, therefore, confines itself to identifying and describing trends in recorded crime, rather than explaining them.

[5] For each offence category or subcategory (except murder), a statistical test for trend was applied to the monthly numbers of recorded criminal incidents over the relevant period. In the case of murder, the statistical test for trend was applied to the monthly numbers of victims over the period. The trend test used was Kendall's rank-order correlation test (see, for example, Conover, W.J. 1980, Practical Non-Parametric Statistics, 2nd ed, John Wiley and Sons, pp 256-260). A two-tailed test was used to determine whether there had been an increasing or decreasing trend in the recorded numbers of criminal incidents over the relevant period covered in the report. Some month to month variations in the numbers of recorded incidents could be due in part to seasonal factors. The test for trend is not sensitive to seasonal variations; it is sensitive only to a generally increasing or generally decreasing trend over the time period examined.

[6] For the trend tests throughout this publication, where a statistically significant trend was found ($p < .05$), the extent of the trend is indicated by the percentage change in the total number of recorded criminal incidents between the latest two consecutive 12-month periods for 24 month tests; and the average annual percentage change between the first 12-month period and the latest 12-month period for longer tests. A trend test was not performed if there were fewer than 20 incidents in any of the years for the period in question. The result ' ' indicates that a trend test was not performed. A non-significant test result ($p > .05$) is denoted by 'Stable' or by 'ns' in some larger LGA tables.

[7] In order to present an overview of crime trends in NSW the information in Section 1 relates to aggregate violent and property crime. The State graphs for violent and property offences are plotted as monthly rates² per 100,000 population. The State graph for violent offences shows distinct seasonality and the 12-month moving average (light grey line) indicates a downward path over the past five years, whilst the property offences graph and the 6-month moving average (light grey line) both indicate a strong downward path since about 2000. Violent offences include: murder, attempted murder, manslaughter, assault - domestic violence related, assault - non-domestic violence related, assault police, robbery without a weapon, robbery with a firearm, robbery with a weapon not a firearm, sexual assault and indecent assault / act of indecency / other sexual offences. Property offences include: break and enter dwelling, break and enter non-dwelling, motor vehicle theft, steal from motor vehicle, steal from retail store, steal from dwelling, steal from person, stock theft, other theft and fraud.

[8] The ratio to NSW rate statistics are a comparison of a NSW regional rate per 100,000 population to the NSW rate per 100,000 population². A ratio of one indicates parity with the NSW rate. Ratios indicating double the NSW rate (or more) before rounding are highlighted in red, whilst ratios indicating half the NSW rate (or less) before rounding are highlighted in yellow.

1. Australian Bureau of Statistics Crime Victimization, Australia, Cat. No. 4530.0, ABS, Sydney. See the Australian Bureau of Statistics website for the latest version available at www.abs.gov.au

2. For the rate calculations, specialised population data were prepared and provided to BOCSAR by the Australian Bureau of Statistics.

APPENDIX 2: DEFINITIONS AND EXPLANATORY NOTES

The data in this report are extracted from the NSW Police Force's Computerised Operational Policing System (COPS). This system is used for record-keeping for all police operations, not just for criminal matters.

In this report:

- the counting units are recorded *criminal incidents* rather than recorded *offences* (except for murder and manslaughter, where the counting units are victims); and
- the data are categorised by date of *reporting* to police (or date of detection by police) rather than by date of *occurrence* of the offence (except for alleged offender data, where the data is categorised by date the alleged offender was proceeded against).

RECORDED CRIMINAL INCIDENTS

A criminal incident is defined as an activity detected by or reported to police which:

- involved the same offender(s);
- involved the same victim(s);
- occurred at the one location;
- occurred during one uninterrupted period of time;
- falls into one offence category;
- falls into one incident type (for example, 'actual', 'attempted', 'conspiracy').

One incident may involve two offenders assaulting the same victim. This would be recorded as one assault incident. Alternatively, suppose a man reports to police that he found his neighbour in the process of damaging his car and, when confronted, the neighbour assaulted him. For such an event, two criminal incidents are recorded because two distinct offence types are involved (malicious damage to property and assault) even though the same parties were involved at the same time and in the same place.

RECORDED VICTIMS

For murder and manslaughter only, the counting units used are victims. Under the definition of a criminal incident (same parties, same time, same place, same offence and same incident type) one murder or manslaughter incident could involve two or more persons being killed. Because of the seriousness of these offences and their relatively small numbers, it is considered to be more appropriate to count the number of victims, rather than the number of criminal incidents. Hence, where one murder incident involves a person killing six people, six murder victims are counted.

OFFENCE CATEGORIES

The classification of offences in this report is broadly based on the Australian and New Zealand Standard Offence Classification (ANZSOC) devised by the Australian Bureau of Statistics (*ABS 2011, third edition, Cat. No. 1234.0*).

For all types of offence classifications used in the report, Appendix 3 lists the offence categories included in the classification. The original offence incident categories are those used by the NSW Police Force and do not necessarily correspond exactly with offences as defined in legislation.

MAJOR OFFENCE CATEGORIES

Major offence categories include the most serious personal violence and property offences. The most serious of these offences is *murder* for which the incident count is the number of victims. Assault offences include the two major offence categories of *domestic violence related assault* and *non-domestic violence related assault*. All sexual offences are categorised by the two major offence types, either as *sexual assault* or *indecent assault, act of indecency and other sexual offences*.

Robbery offences are sorted into three categories by use of weapon: *robbery with a firearm*, *robbery with a weapon not a firearm* or *robbery without a weapon*. The serious theft offences in this group start with the burglary categories of *break and enter - dwelling* and *break and enter - non-dwelling* followed by *motor vehicle theft* and *steal from motor vehicle*. Other theft offences included in the 17 major offences are *steal from retail store*, *steal from dwelling*, *steal from person* and *fraud*. The final property offence listed as a major offence is *malicious damage to property*.

APPENDIX 2: DEFINITIONS AND EXPLANATORY NOTES *continued*

COUNTING PERIOD

Criminal incidents are included in the counting period in which they were reported to or detected by police.

In most cases criminal incidents are recorded on COPS on the day of reporting. However there may be some time delay before the incident gains the status of accepted and verified (which are necessary conditions for inclusion in this report). It is therefore possible for some updating of data to occur. That is, data extracted for a specified period of time may differ according to the date of extraction of the data.

In recent years some historic murders have been re-entered on the COPS system after being referred to the unsolved homicide squad. Murders that were first reported to NSW Police prior to the introduction of the COPS system in 1995 but recorded on the COPS system in recent years are excluded from the statistics. Murders which took place prior to 1995 but were first reported to Police in or after 1995 are included in the statistics.

PROCEEDINGS AGAINST ALLEGED OFFENDERS

Police may proceed against alleged offenders through a variety of legal or other processes. Alleged offenders who are not legally proceeded against are not included in this report. Most alleged offenders are referred to the NSW Criminal Courts. The more serious offences are dealt with by way of a Bail Court Attendance Notice (CAN) or a No-Bail CAN. In these instances, the alleged offender is arrested, taken to a police station, fingerprinted and the details of the person and all charges are recorded. A Bail CAN is used when a bail determination is required and a No-Bail CAN is used when a bail determination is not required.

Following changes to the Bail Act in May 2014, No-Bail CANs are used almost solely for incidents of 'Breach of bail conditions' and no bail determination is required because the original determination stands until a new determination is made by the court. Alternatively a Field CAN may be issued by police at other locations. A Future CAN is used for less serious offences.

Some alleged offenders are proceeded against but diverted from the criminal court system. For many minor offences police can issue Infringement Notices. By paying the prescribed penalty the offender avoids having to go to court. Under the *Young Offenders Act 1997*, a juvenile offender can be issued with either a warning, a caution or referred to a youth justice conference.

Youth Justice Conference and cautions data in previous reports have included juvenile offenders initially proceeded against to court by Police and then referred to a conference or given a caution under the *Young Offenders Act* by the court. From the 2015 report, they are now counted as being proceeded against to court by Court Attendance Notice as that was the method of proceeding used by the Police. Consequently data in this report is not comparable with data in previously published reports. Comparable data for previous years is available on request.

Data on warnings under the *Young offenders Act*, is available from January 2010 onwards. Due to changes in how warnings are recorded, this data series can not be compared with warning data previously published. A youth justice conference is a face-to-face meeting between offenders, victims and their support persons. The offending behaviour is discussed and an outcome plan for the offender negotiated. Note that both the police and the courts can refer a young person to a youth justice conference. However, the number of alleged offenders proceeded against by way of a youth justice conference, as shown in Table 4.1, includes only police referrals to a youth justice conference.

Since mid-2008, Police have issued compliance notices for breaches of liquor licensing regulations/legislation. Commonly these are for relatively minor breaches eg fail to display regulated signs. Liquor Offence Compliance Notices have been added to the recorded crime collection from the 2015 report. Consequently data in this report is not comparable with data in previously published reports. Comparable data for all years is available on request.

Each offender or alleged offender appears only once in the table for each event. Note that multiple criminal incidents may be associated with a single event. The processes are arranged in a hierarchy with the offender or alleged offender appearing in the most serious category where multiple incidents are involved. For example if an event involves two incidents and the alleged offender is charged for one incident but receives a caution for the second incident, the alleged offender appears only in the relevant 'proceeded against to court' category.

APPENDIX 2: DEFINITIONS AND EXPLANATORY NOTES *continued*

PROCEEDINGS AGAINST ALLEGED OFFENDERS *continued*

It should be noted that in previous annual recorded crime reports, data on alleged offenders were categorised by date of reporting to police (or date the incident was detected by police). Given there can be a delay between an event being recorded by police and police commencing legal proceedings this resulted in fewer alleged offenders being counted, particularly during the last three months of the reporting period. For this reason, since the 2017 annual report, alleged offender data is categorised by the date the alleged offender was proceeded against. Therefore in Section 4 the year refers to the year in which alleged offenders were proceeded against. It does not refer to the year in which a criminal incident or incidents were reported to police. For example, if an incident was reported to police in 2016 but the alleged offender was not apprehended and charged until 2017, the alleged offender is counted in 2017. As such, Section 4 of this report is not comparable with alleged offender data published prior to the 2017 annual report. Comparable data for all years is available on request.

CLEARED CRIMINAL INCIDENTS

A cleared criminal incident is one, which, in the view of police, has been satisfactorily cleared by the commencement of legal proceedings or otherwise.

An incident is cleared by the commencement of legal proceedings when police have laid a charge or an information against at least one person. The information may have been laid with a view to the issuing of a warrant, Future CAN or other process for the purpose of bringing an offender before the court.

A criminal incident is cleared other than by commencement of legal proceedings when, under normal circumstances, a charge or information would have been laid against at least one person, but, for a variety of reasons, police have been unable to make an arrest, despite knowing the identity of the offender and having sufficient evidence to support a charge. Examples of situations in which an offence may be cleared other than by charge include the following:

- the offender is a juvenile and is cautioned;
- the offender has died before a charge is made or information laid;
- the offender has been committed to a psychiatric institution and is unlikely to be released;
- there is an obstacle to charging, such as diplomatic immunity;
- the complainant or essential witness is dead and proceedings would be aborted;
- the offender is serving a sentence and police consider that no useful purpose would be served by prosecution.

The offence types included in these tables are those where the crime is likely to have been reported to police, rather than discovered or detected by police. Offence types where the numbers of recorded criminal incidents are influenced by police law enforcement activity (drug offences, for example) are excluded. For such offence types, the clear-up percentages are very high because clearing the offence generally occurs simultaneously with its detection (that is, an arrest is made when the crime is discovered). This report contains criminal incidents cleared within 30 and 90 days after the incident was reported to the NSW Police Force.

The clear-up status after 30 days could not be determined for any offences reported in the latest month. Hence, Table 5.1 is for the 24-month period ending one month before the quarterly reporting period. Similarly, the clear-up status after 90 days could not be determined for any offences reported in the latest three months. Hence, Table 5.2 and Figure 5.1 is for the 24-month period ending three months before the quarterly reporting period.

REGIONAL STATISTICS

Statistics are provided on the number of criminal incidents (victims for murder) recorded for each of the Statistical Areas (SAs) of NSW as defined by the Australian Bureau of Statistics (ABS).

Recorded criminal incidents which occurred in correctional, detention or remand centres, however, are not counted in the SA in which the incident occurred. Appendix 4 provides maps indicating the location of each SA. Appendix 5 lists the Local Government Areas (LGAs using 2008 boundaries) within each of the SAs. Note that LGA boundaries change from time to time. A criminal incident is counted within a particular region when the location of the offence falls within that region.

For the rate calculations, specialised population data were prepared and provided to BOCSAR by the Australian Bureau of Statistics.

APPENDIX 3: BOCSAR OFFENCES MAPPED TO POLICE INCIDENT CATEGORIES

BOCSAR offence	NSW Police Force incident categories
Homicide	
Murder	Murder
Attempted murder	Murder – attempted Shoot with intent to murder
Murder accessory, conspiracy	Murder – conspiracy Murder – solicit
Manslaughter – not driving	Manslaughter
Assault	<i>Includes any of the following offences disaggregated by whether or not police have flagged the incident as domestic violence related:</i>
Domestic violence related	Actual bodily harm Assault common Grievous bodily harm (including malicious wounding) Shoot with intent other than to murder Spike drink/food
Non-domestic violence related	Actual bodily harm Assault common Grievous bodily harm (including malicious wounding) Shoot with intent other than to murder Spike drink/food
Assault Police	Assault Police officer
Sexual offences	
Sexual assault	Sexual assault – adult victim (16+ years old) Sexual assault – child victim, reported when adult Sexual assault – child victim, reported when child
Indecent assault, act of indecency and other sexual offences	Act of indecency Aggravated act of indecency Indecent assault – adult victim (16+ years old) Indecent assault – child victim, reported when child Indecent assault – child victim, reported when adult Bestiality Carnal knowledge Grooming/procuring Incest Indecent communication Peep or pry Wilful and obscene exposure Other sexual offence
Abduction and kidnapping	Kidnapping/Abduction

APPENDIX 3: BOCSAR OFFENCES MAPPED TO POLICE INCIDENT CATEGORIES

BOCSAR offence	NSW Police Force incident categories
Robbery	
Robbery without a weapon	<i>Includes any of the following offences in which no weapon was recorded:</i> Demand money with menaces Robbery Robbery with aggravation Robbery with wounding Other robbery
Robbery with a firearm	<i>Includes any of the following offences in which a firearm was recorded as a weapon:</i> Armed robbery Demand money with menaces Robbery Robbery with aggravation Robbery with wounding Other robbery
Robbery with a weapon not a firearm	<i>Includes any of the following offences in which a non firearm weapon was recorded:</i> Armed robbery Demand money with menaces Robbery Robbery with aggravation Robbery with wounding Other robbery
Blackmail and extortion	Extortion/Blackmail
Intimidation, stalking and harassment	Intimidation <i>(includes threatening behaviour, stalking)</i> Riot and affray Telecommunications offence <i>(includes nuisance phone calls)</i> Threats against Police Violent disorder
Other offences against the person	Labour exploitation <i>(includes sexual servitude)</i> Malicious damage with intent to injure/endanger Negligent act cause grievous bodily harm Other offence against the person
Theft	
Break and enter – dwelling	<i>Dwelling includes premises where people reside such as house, home unit, caravan, tent as well as any attachment such as garage, shed, yard and garden.</i> Break/Enter and steal Break/Enter and commit other felony Break/Enter intent to steal Break/Enter intent to commit other felony
Break and enter – non-dwelling	<i>Non-dwelling includes commercial and government premises.</i> Break/Enter and steal Break/Enter and commit other felony Break/Enter intent to steal Break/Enter intent to commit other felony

APPENDIX 3: BOCSAR OFFENCES MAPPED TO POLICE INCIDENT CATEGORIES

BOCSAR offence	NSW Police Force incident categories
Theft <i>continued:</i>	
Receiving or handling stolen goods	Receiving Goods in custody Possess property stolen outside NSW
Motor vehicle theft	Theft of motor cars, motor cycles, and other vehicles / vessels Rebirthing vehicles / vessels
Steal from motor vehicle	Steal from motor vehicle
Steal from retail store	Steal from retail store
Steal from dwelling	Steal from dwelling Other stealing <i>occurring in a residential dwelling</i>
Steal from person	Steal from person
Stock theft	Steal stock (Non-domestic animal)
Fraud	Company/corporate offence Computer crime Copyright/Intellectual property/Trademark Corrupt commission/practices Corrupt payment (receive or pay) Counterfeit currency Deception offence Embezzlement Fail to pay Fraudulent misappropriation Larceny clerk/servant/bailee Make/use false instrument Misappropriate cheques/funds Possess false instrument Publish false misleading statement Receiving (fraud related) Other fraud
Other theft	Steal from dwelling <i>occurring somewhere other than a residential or non-residential dwelling</i> (e.g. from hostels, motels, boarding houses etc) Steal domestic animal or bird Steal from marine vessel Steal vessel Other stealing <i>occurring somewhere other than a dwelling</i> (e.g. in outdoor/public places)
Arson	<i>Fire incident where classified as deliberate:</i> Bushfire Structure Vehicle (e.g. aircraft/motor vehicle/train/vessel) Other commodity
Malicious damage to property	Graffiti Malicious damage to property Public place – damage fountain/wall etc. Public place – damage shrine/monument

APPENDIX 3: BOCSAR OFFENCES MAPPED TO POLICE INCIDENT CATEGORIES

BOCSAR offence	NSW Police Force incident categories
Drug offences	
Possession and/or use of cocaine	Possess drug <i>where drug type is cocaine</i> Use or administer drug <i>where drug type is cocaine</i> Item/object found <i>where drug type is cocaine</i>
Possession and/or use of narcotics	Possess drug <i>where drug type is narcotics</i> Use or administer drug <i>where drug type is narcotics</i> Item/object found <i>where drug type is narcotics</i>
Possession and/or use of cannabis	Possess drug / plant <i>where drug type is cannabis</i> Use or administer drug <i>where drug type is cannabis</i> Item/object found <i>where drug type is cannabis</i>
Possession and/or use of amphetamines	Possess drug <i>where drug type is amphetamines</i> Use or administer drug <i>where drug type is amphetamines</i> Item/object found <i>where drug type is amphetamines</i>
Possession and/or use of ecstasy	Possess drug <i>where drug type is ecstasy</i> Use or administer drug <i>where drug type is ecstasy</i> Item/object found <i>where drug type is ecstasy</i>
Possession and/or use of other drugs	Possess drug <i>where drug type is not cocaine, narcotics, cannabis, amphetamines or ecstasy</i> Use or administer drug <i>where drug type is not cocaine, narcotics, cannabis, amphetamines or ecstasy</i> Item/object found <i>where drug type is not cocaine, narcotics, cannabis, amphetamines or ecstasy</i>
Dealing, trafficking in cocaine	Supply drug <i>where drug type is cocaine</i>
Dealing, trafficking in narcotics	Supply drug <i>where drug type is narcotics</i>
Dealing, trafficking in cannabis	Supply drug/plant <i>where drug/plant type is cannabis</i>
Dealing, trafficking in amphetamines	Supply drug <i>where drug type is amphetamines</i>
Dealing, trafficking in ecstasy	Supply drug <i>where drug type is ecstasy</i>
Dealing, trafficking in other drugs	Supply drug/plant <i>where drug/plant type is not cocaine, narcotics, cannabis, amphetamines or ecstasy</i>
Cultivating cannabis	Cultivation
Manufacture drug	Manufacture drug
Importing drugs	Import drug/plant
Other drug offences	Forge and/or utter prescription Possess drug utensil Other drug detection/seizure offence
Prohibited and regulated weapons offences	Bomb hoax or threat Discharge firearm into premises Licence offence Firearms dealer offence

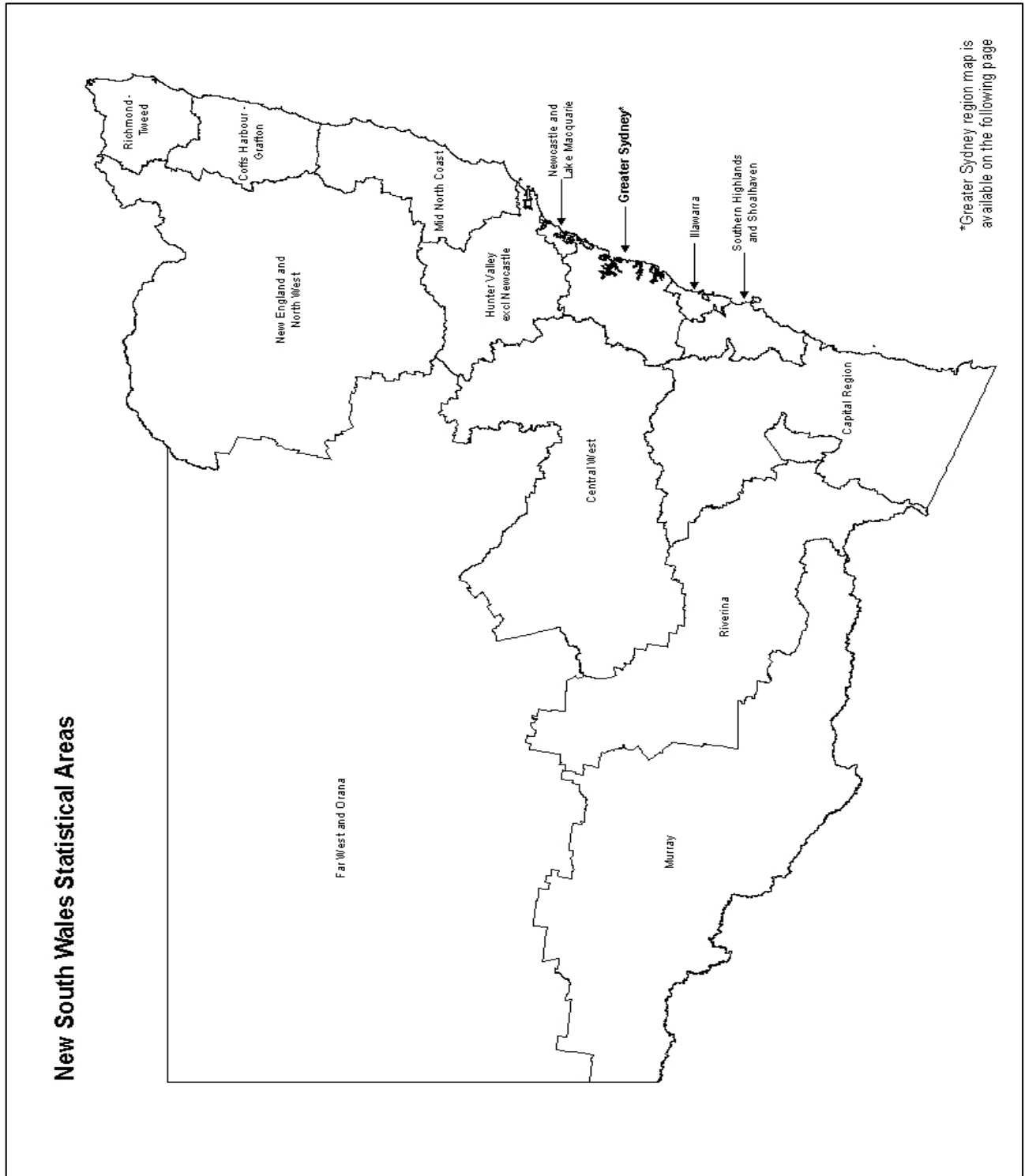
APPENDIX 3: BOCSAR OFFENCES MAPPED TO POLICE INCIDENT CATEGORIES

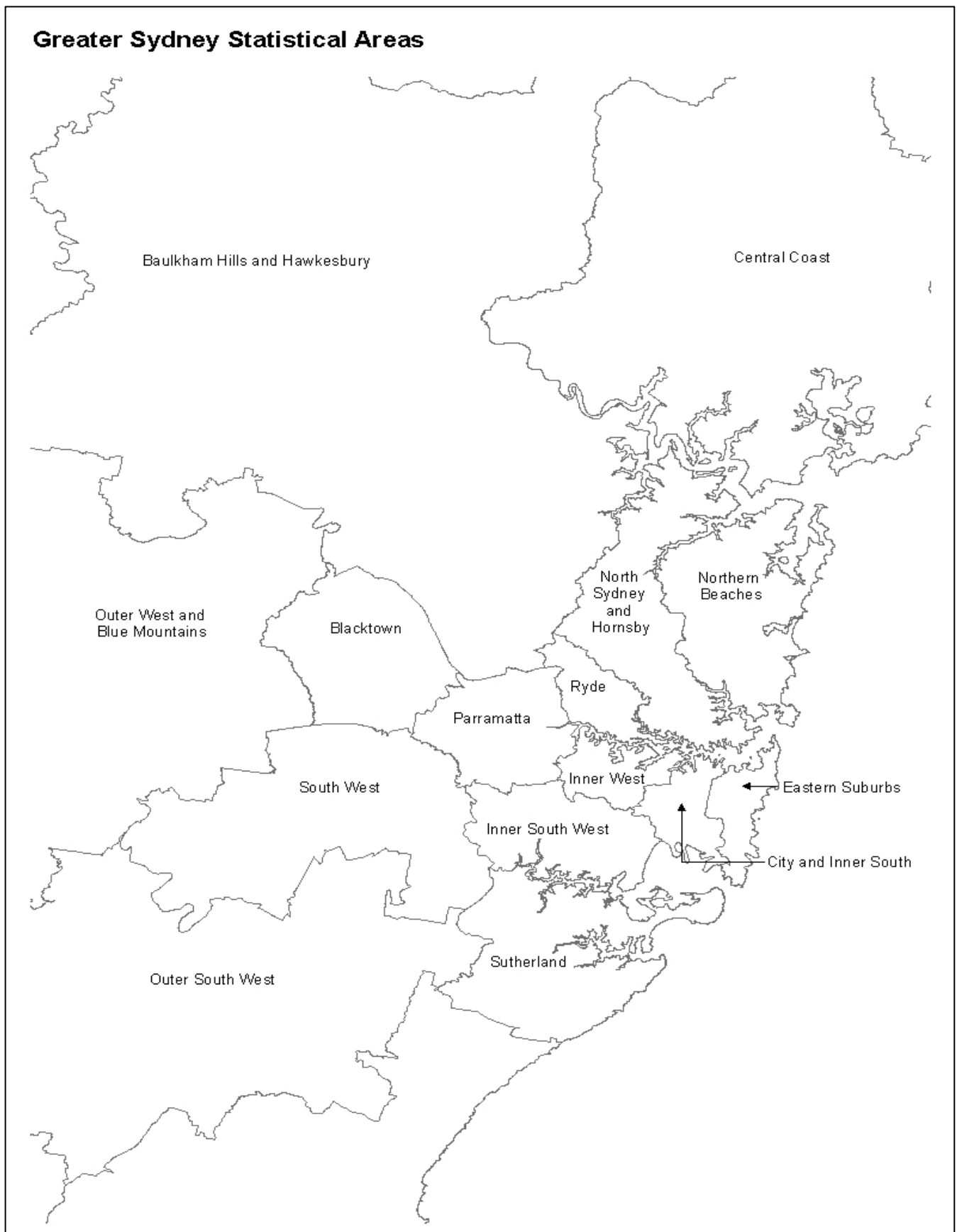
BOCSAR offence	NSW Police Force incident categories
Prohibited and regulated weapons offences continued:	Firearms not ensure safekeeping Improper storage of explosives Person search - Item/object found <i>where item/object is a weapon</i> Possess explosive/dangerous article Possess prohibited weapon/article Possess shortened firearm Possess whilst unlicensed Sell prohibited weapon/article Shorten firearm Trespass with firearm Unlawful handling/access/supply of explosives Unlawfully discharge firearm Use firearm under influence Use prohibited weapon/article Other explosives offence Other firearm licencing offence Other firearm offence Other prohibited weapon/article offence
Disorderly conduct	
Trespass	Trespass Remain inclosed lands
Offensive conduct	Offensive behaviour
Offensive language	Offensive language
Criminal intent	Armed with intent Disguised with intent Enter land with intent Intent to repeat indictable offence Possess implements
Betting and gaming offences	Conduct/play illegal betting Conduct/play illegal game Own/manage premises – betting Own/manage premises – gaming Other gaming offence
Liquor offences	Consume alcohol in alcohol-free zone Consume/possess alcohol in public by minor Licensing legislation offence: <ul style="list-style-type: none"> – Offence by licensee/employee/secretary – Offence by minor – Offence by customer (not minor) – Supply liquor to juvenile – Offence against registered clubs legislation
Pornography offences	Possess/disseminate child pornography Possess/publish indecent material
Prostitution offences	Soliciting/prostitution in public Prostitution – premises Prostitution – live off earnings Child prostitution Other vice offence

APPENDIX 3: BOCSAR OFFENCES MAPPED TO POLICE INCIDENT CATEGORIES

BOCSAR offence	NSW Police Force incident categories
Against justice procedures	
Escape Custody	Escapee – Corrective Services custody Escapee – Department of Community Services custody Escapee – Police custody Escapee – Other custody
Breach Apprehended Violence Order	Breach Apprehended Violence Order – domestic Breach Apprehended Violence Order – personal
Breach bail conditions	Breach bail conditions Breach control order
Fail to appear	Fail to appear
Resist or hinder officer	Refuse direction Refuse direction continue intoxication and disorder Refuse direction intoxicated person Refuse to be searched Refuse to produce object Resist/hinder officer
Other offences against justice procedures	Contravene Child Protection Prohibition Order (CPPO) Other judicial offence
Transport regulatory offences	Transport offence (<i>includes offences on the rail network such as travelling without a valid ticket, smoking, drinking or using offensive language on a train or railway land</i>) Buffer riding
Other offences	Animals – dog offences Family law offence Immigration/customs offence Obstruction Offence against transport service Other street offences (carry cutting weapon, offensive implement) Public mischief Terrorism offences Other miscellaneous offences Offences under various acts: <i>Animals - Prevention Of Cruelty Acts</i> <i>Bush Fire Act</i> <i>Child Protection Act</i> <i>Local Government Act</i> <i>Marine/Waterway Act</i> <i>Pawnbrokers Act</i> <i>Postal Services Act</i> <i>Security Industry Act</i> <i>Sydney Harbour Bridge Act</i> <i>Tattoo Parlours Act</i>

APPENDIX 4: NSW & GREATER SYDNEY STATISTICAL AREA MAPS



APPENDIX 4: NSW & GREATER SYDNEY STATISTICAL AREA MAPS

APPENDIX 5: LGAs IN GREATER SYDNEY STATISTICAL AREAS***Greater Sydney Statistical Areas***

Baulkham Hills and Hawkesbury

Hawkesbury*
The Hills Shire*

Blacktown

Blacktown

Central Coast

Central Coast

City and Inner South

Sydney*

Eastern Suburbs

Randwick*
Waverley
Woollahra

Inner South West

Bayside*
Canterbury-Bankstown*
Georges River

Inner West

Burwood
Canada Bay
Inner West*
Strathfield*

North Sydney and Hornsby

Hornsby*
Ku-ring-gai
Lane Cove
Mosman
North Sydney
Willoughby

Northern Beaches

Northern Beaches

Outer South West

Camden*
Campbelltown*
Wollondilly*

Outer West and Blue Mountains

Blue Mountains*
Penrith*

Parramatta

Cumberland*
Parramatta*

Ryde

Hunters Hill
Ryde*

South West

Fairfield*
Liverpool*

Sutherland

Sutherland Shire*

* These LGAs span across two or more Statistical Areas.

These LGAs are listed under the Greater Sydney Statistical Areas which contain the largest area of each LGA.

APPENDIX 5: LGAs IN NSW REGIONAL STATISTICAL AREAS***NSW Regional Statistical Areas***

Capital Region

Bega Valley
Eurobodalla
Goulburn Mulwaree
Hilltops
Queanbeyan-Palerang Regional
Snowy Monaro Regional*
Upper Lachlan Shire
Yass Valley*

Central West

Bathurst Regional
Bland*
Blayney
Cabonne*
Cowra
Forbes
Lachlan*
Lithgow
Mid-Western Regional*
Oberon*
Orange
Parkes
Weddin

Coffs Harbour - Grafton

Bellingen*
Clarence Valley*
Coffs Harbour

Far West and Orana

Bogan
Bourke
Brewarrina
Broken Hill
Central Darling
Cobar
Coonamble
Dubbo Regional*
Gilgandra
Narromine
Unincorporated Far West
Walgett
Warren
Warrumbungle Shire*

Hunter Valley excluding Newcastle

Cessnock
Dungog
Maitland*
Muswellbrook
Port Stephens*
Singleton*
Upper Hunter Shire*

Illawarra

Kiama*
Shellharbour
Wollongong

Mid North Coast

Kempsey
Lord Howe Island
Mid-Coast*
Nambucca*
Port Macquarie-Hastings

Murray

Albury
Balranald
Berrigan
Edward River
Federation*
Greater Hume Shire*
Hay
Murray River
Wentworth

New England and North West

Armidale Regional*
Glen Innes Severn
Gunnedah
Gwydir
Inverell
Liverpool Plains*
Moree Plains
Narrabri
Tamworth Regional
Tenterfield
Uralla
Walcha

Newcastle and Lake Macquarie

Lake Macquarie*
Newcastle

Richmond - Tweed

Ballina
Byron
Kyogle
Lismore
Richmond Valley*
Tweed

Riverina

Carrathool*
Coolamon
Cootamundra-Gundagai
Griffith
Junee
Leeton
Lockhart*
Murrumbidgee*
Narrandera
Snowy Valleys*
Temora
Wagga Wagga

Southern Highlands and Shoalhaven

Shoalhaven*
Wingecarribee*

* These LGAs span across two or more Statistical Areas.

These LGAs are listed under the NSW Regional Statistical Areas which contain the largest area of each LGA.

