
NEW SOUTH WALES CUSTODY STATISTICS

QUARTERLY UPDATE
DECEMBER 2018



NSW Bureau of Crime
Statistics and Research

CONTENTS

This report presents 24 months of reception, discharge and custody population data and comparisons between the current and previous quarter for age, gender, indigenous status, most serious offence and the average length of stay.

Separate figures are presented for juveniles and adults.

The counting unit is a custodial episode. An individual will be counted multiple times in a period if they have multiple custodial episodes in that period.

SCOPE

The data in this report are extracted from the Corrective Services NSW (CSNSW) Offender Integrated Management System (OIMS) and the Juvenile Justice NSW (JJNSW) Client Information Management System (CIMS).

The adult custody population figures include only those persons held in gazetted correctional centres managed by CSNSW. This includes: persons managed as forensic patients, persons held after expiry of their sentence awaiting deportation and persons awaiting extradition to another jurisdiction. Persons in the Special Purpose Centre at Long Bay Correctional Centre are not included.

In addition to gazetted correctional centres, CSNSW manages a number of police/court cell complexes. This report excludes persons received into and then discharged from a CSNSW-managed 24 hour police/court cell complex without entering a gazetted correctional centre. Adults refused police bail but not held in a gazetted correctional centre are not included. An exception to this is the adult prison population forecast which does include these non-gazetted correctional centres.

Custody population figures are counted as at midnight on the last day of the month or quarter as appropriate. Reception and discharge figures are those during each month or quarter as appropriate.

Refer to the Glossary at the back of the report for detailed descriptions of the terms used in the report.

ACKNOWLEDGEMENTS

Juvenile custody data are provided by the Research and Information Section of JJNSW. Adult custody data are provided by the Corrections Research, Evaluation and Statistics (CRES) section of CSNSW. BOCSAR is grateful for the support provided by both areas in supplying the data for this report and advising on its interpretation.

NOTE

The adult custody data presented in this report will differ from data reported by CSNSW due to data extract timing differences.

Contents

PART 1 JUVENILES **4**

SECTION 1.1	JUVENILE CUSTODY POPULATION	5
1.1.1	By Month	5
1.1.2	By Legal Status	5
1.1.3	By Indigenous Status.....	6
1.1.4	By Legal Status (Indigenous Only).....	6
1.1.5	Profile	7
1.1.6	Legal Status Changed from Remand to Sentenced	7
1.1.7	Remand Population by Most Serious Offence	8
1.1.8	Sentenced Population by Most Serious Offence	9
1.1.9	Juvenile Custody Forecast	10
SECTION 1.2	JUVENILE CUSTODY RECEPTIONS	11
1.2.1	By Month	11
1.2.2	By Legal Status	11
SECTION 1.3	JUVENILE CUSTODY DISCHARGES	12
1.3.1	By Month	12
1.3.2	Length of Stay	12
1.3.3	By Discharge Type	13
1.3.4	By Discharge Type (Excluding Bail).....	13
1.3.5	Ratio Of Receptions To Discharges.....	14

PART 2 ADULTS **15**

SECTION 2.1	ADULT CUSTODY POPULATION	16
2.1.1	By Month	16
2.1.2	By Indigenous Status.....	16
2.1.3	Remand Population	17
2.1.4	Sentenced Population.....	17
2.1.5	Indigenous Remand Population	18
2.1.6	Indigenous Sentenced Population	18
2.1.7	Profile	19
2.1.8	Legal Status Changed from Remand to Sentenced	19
2.1.9	Remand Population by Most Serious Offence	20
2.1.10	Sentenced Population by Most Serious Offence	21
2.1.11	Male Prison Population Forecast	22
2.1.12	Female Prison Population Forecast.....	22
SECTION 2.2	ADULT CUSTODY RECEPTIONS	23
2.2.1	By Month	23
2.2.2	Remand Receptions	23
2.2.3	Sentenced Receptions.....	24
SECTION 2.3	ADULT CUSTODY DISCHARGES	25
2.3.1	By Month	25
2.3.2	Length of Stay	25
2.3.3	By Discharge Type	26
2.3.4	Ratio Of Receptions To Discharges.....	26

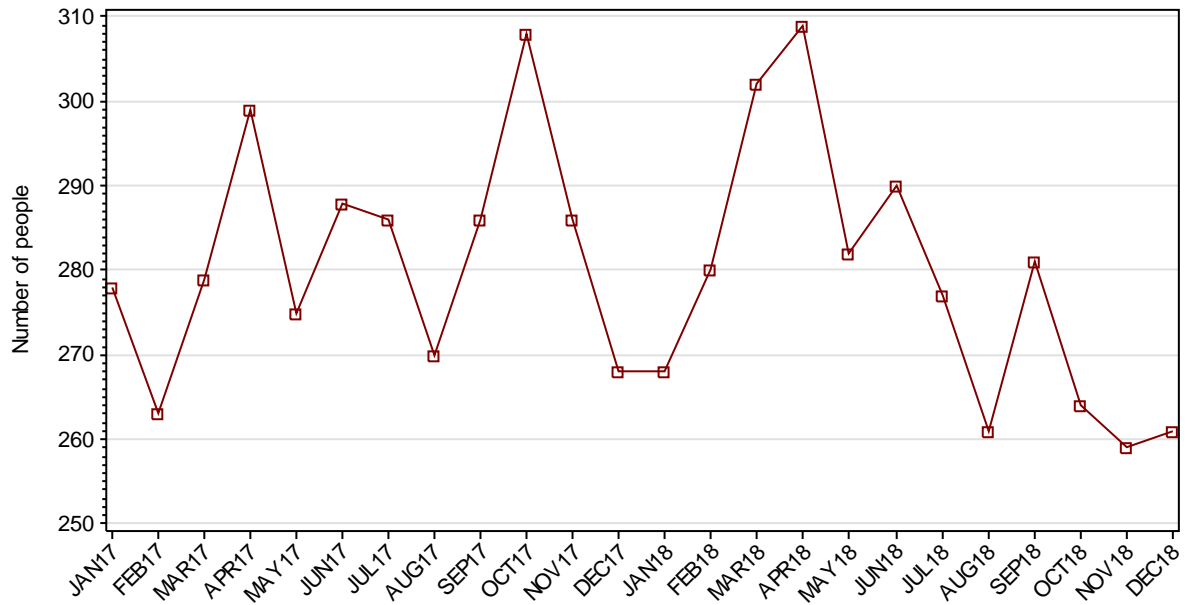
PART 3 DATA TABLES **27**

PART 4 GLOSSARY **32**

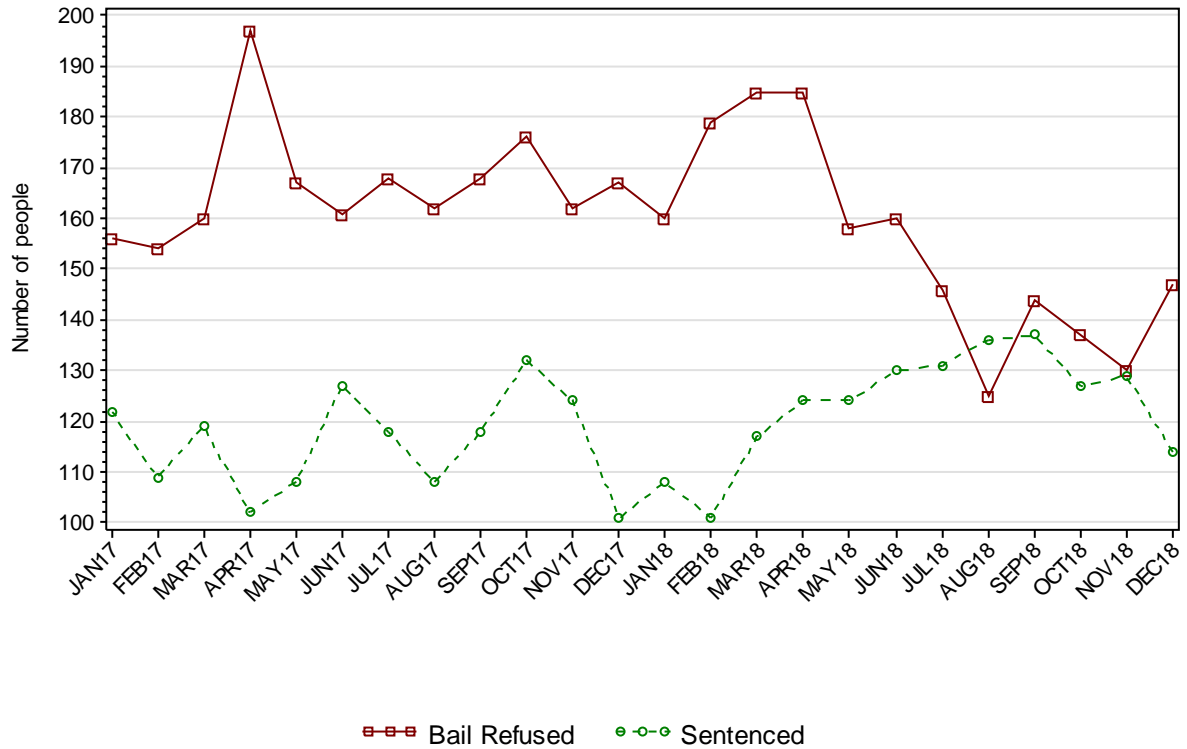
Part 1 JUVENILES

SECTION 1.1 JUVENILE CUSTODY POPULATION

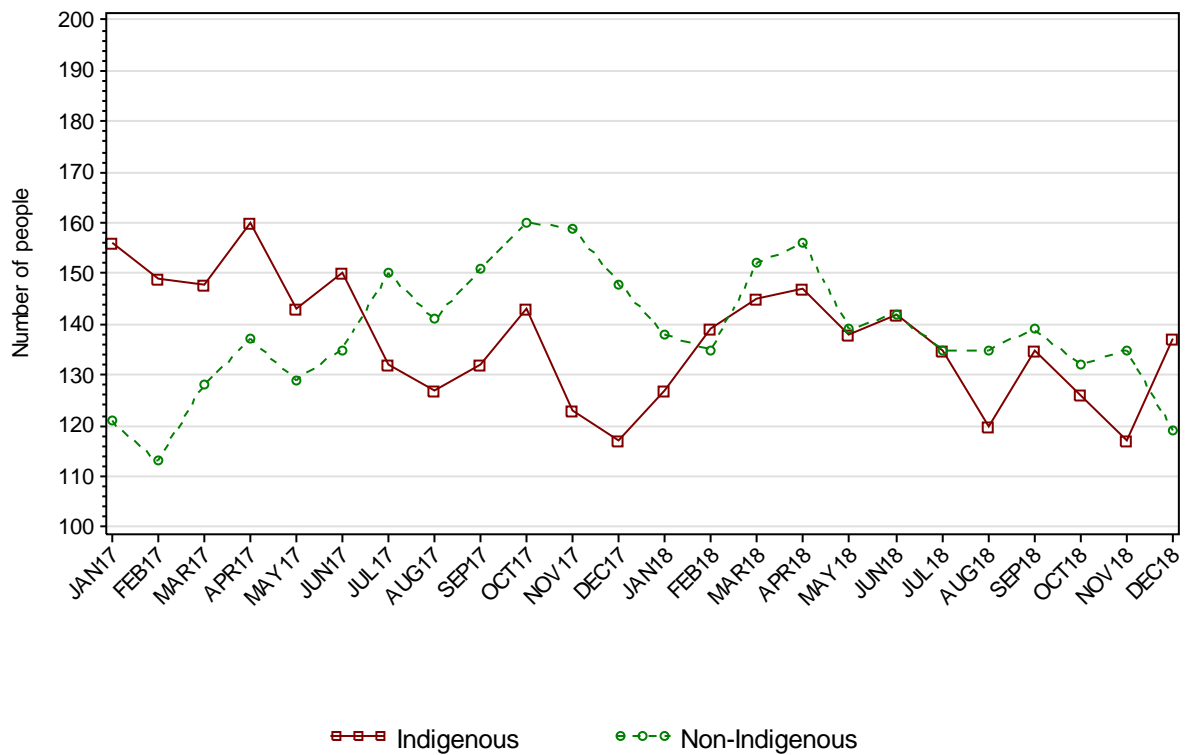
1.1.1 JUVENILE CUSTODY POPULATION AT END OF MONTH



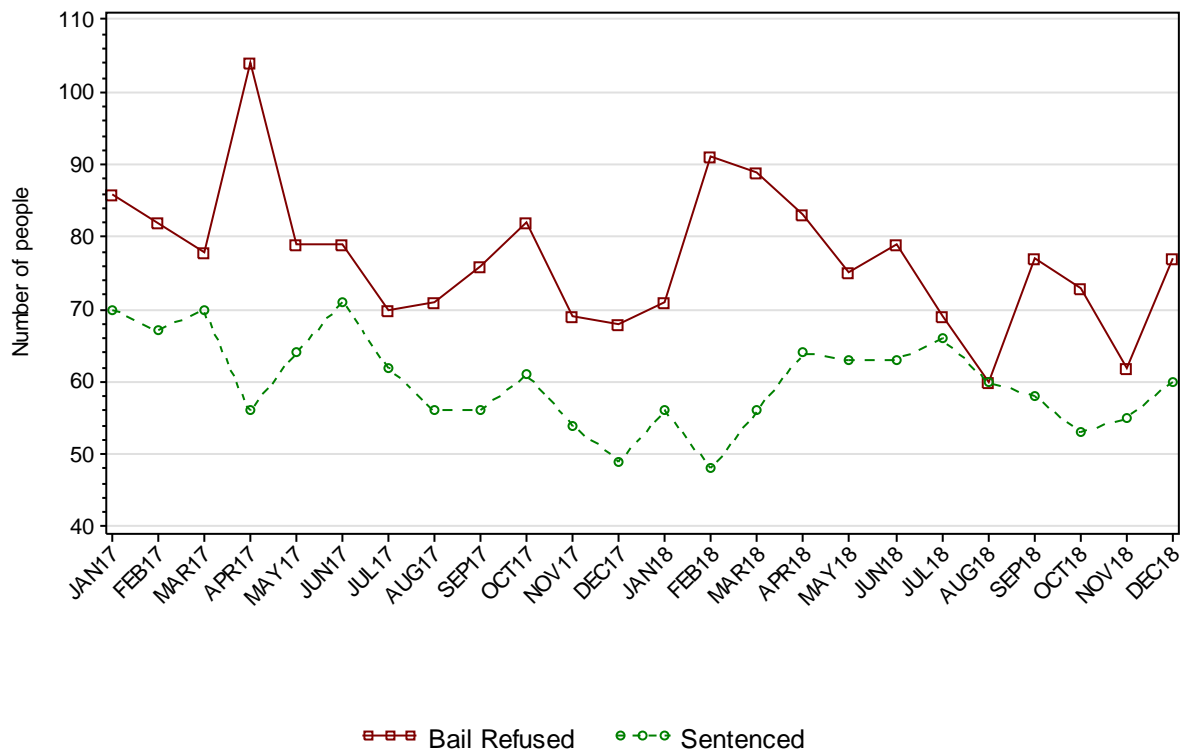
1.1.2 JUVENILE CUSTODY POPULATION BY LEGAL STATUS



1.1.3 JUVENILE CUSTODY POPULATION BY INDIGENOUS STATUS



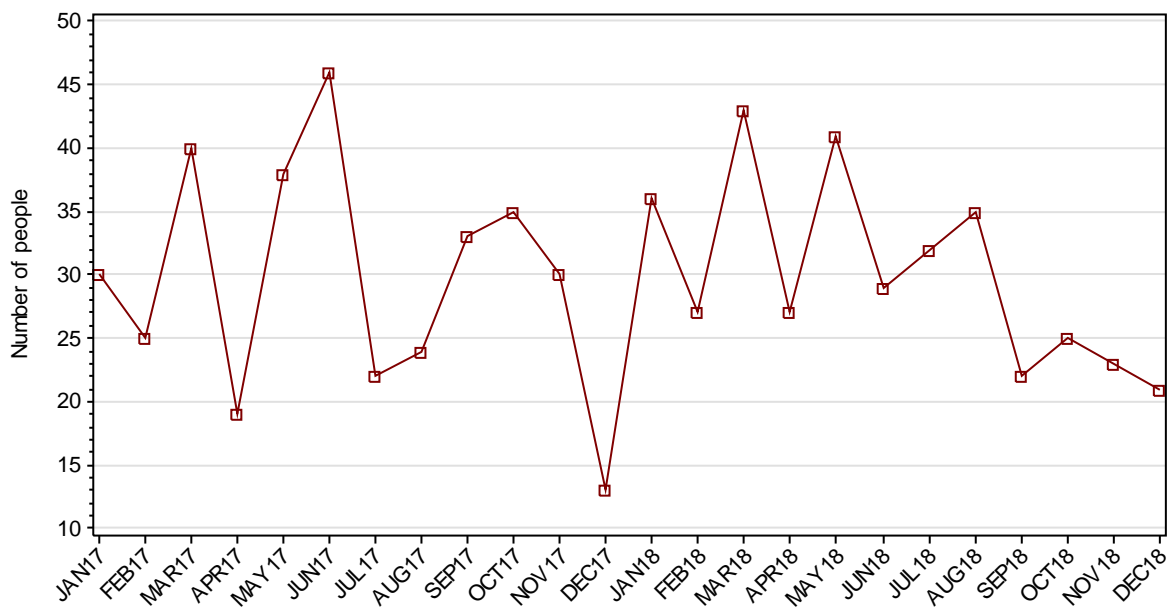
1.1.4 INDIGENOUS JUVENILE CUSTODY POPULATION BY LEGAL STATUS



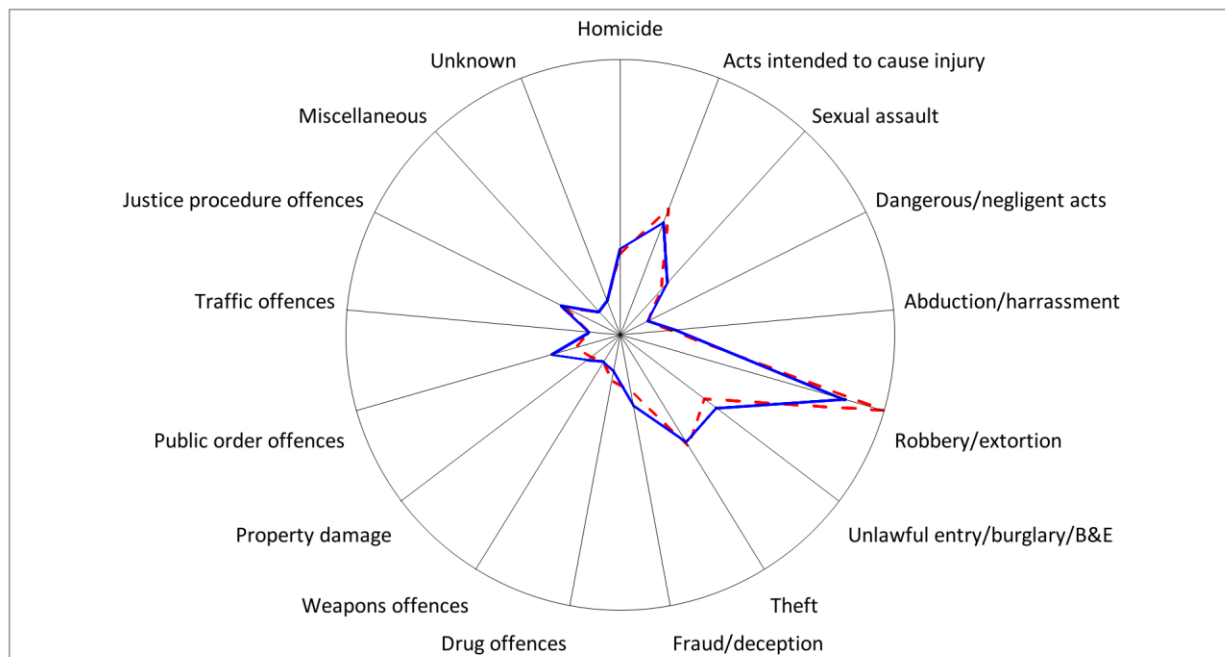
1.1.5 JUVENILE CUSTODY PROFILE AT END OF QUARTER

		Police Bail Refused		Court Bail Refused		Sentenced		Total	
		SEP18	DEC18	SEP18	DEC18	SEP18	DEC18	SEP18	DEC18
Total Male	Count	6	4	123	124	128	111	257	239
	Avg Age	16.2	14.3	16.4	16.2	17.0	17.0	16.7	16.5
Total Female	Count	1	1	14	18	9	3	24	22
	Avg Age	17.0	15.0	15.6	16.1	15.9	16.0	15.8	16.0
Indigenous Male	Count	5	2	64	66	54	57	123	125
	Avg Age	16.4	14.5	16.1	16.0	16.8	16.8	16.4	16.3
Indigenous Female	Count	0	0	8	9	4	3	12	12
	Avg Age	.	.	15.0	15.4	15.0	16.0	15.0	15.6
Total	Count	7	5	137	142	137	114	281	261
	Avg Age	16.3	14.4	16.3	16.2	16.9	16.9	16.6	16.5

1.1.6 JUVENILES IN CUSTODY: NUMBER WHOSE LEGAL STATUS CHANGED DURING MONTH FROM REMAND TO SENTENCED



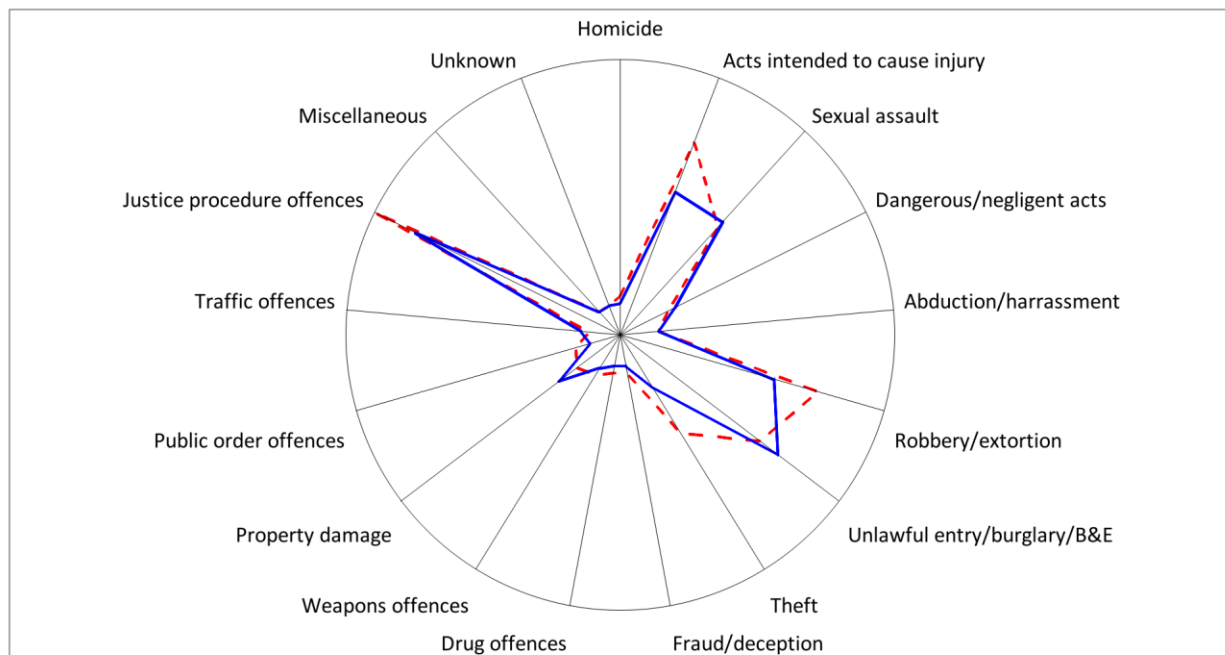
1.1.7 JUVENILE REMAND POPULATION BY MOST SERIOUS OFFENCE



As At: - - 30SEP18 — 31DEC18

	30SEP18		31DEC18	
	Number	% of Total	Number	% of Total
Homicide	10	6.9	11	7.5
Acts intended to cause injury	21	14.6	18	12.2
Sexual assault	6	4.2	8	5.4
Dangerous/negligent acts	0	0	0	0
Abduction/harrassment	4	2.8	5	3.4
Robbery/extortion	49	34.0	41	27.9
Unlawful entry/burglary/B&E	15	10.4	18	12.2
Theft	20	13.9	19	12.9
Fraud/deception	5	3.5	8	5.4
Drug offences	3	2.1	1	0.7
Weapons offences	0	0	0	0
Property damage	1	0.7	2	1.4
Public order offences	3	2.1	8	5.4
Traffic offences	0	0	0	0
Justice procedure offences	6	4.2	7	4.8
Miscellaneous	0	0	0	0
Unknown	1	0.7	1	0.7
Total	144	100.0	147	100.0

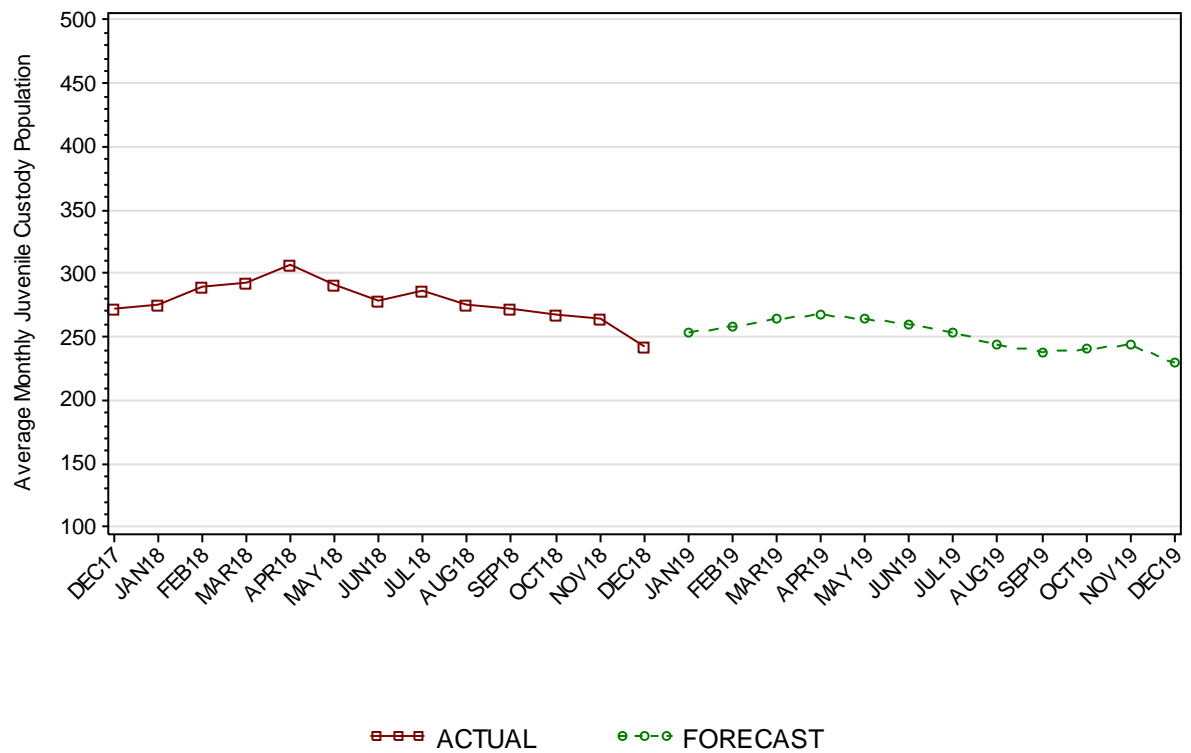
1.1.8 JUVENILE SENTENCED POPULATION BY MOST SERIOUS OFFENCE



As At:

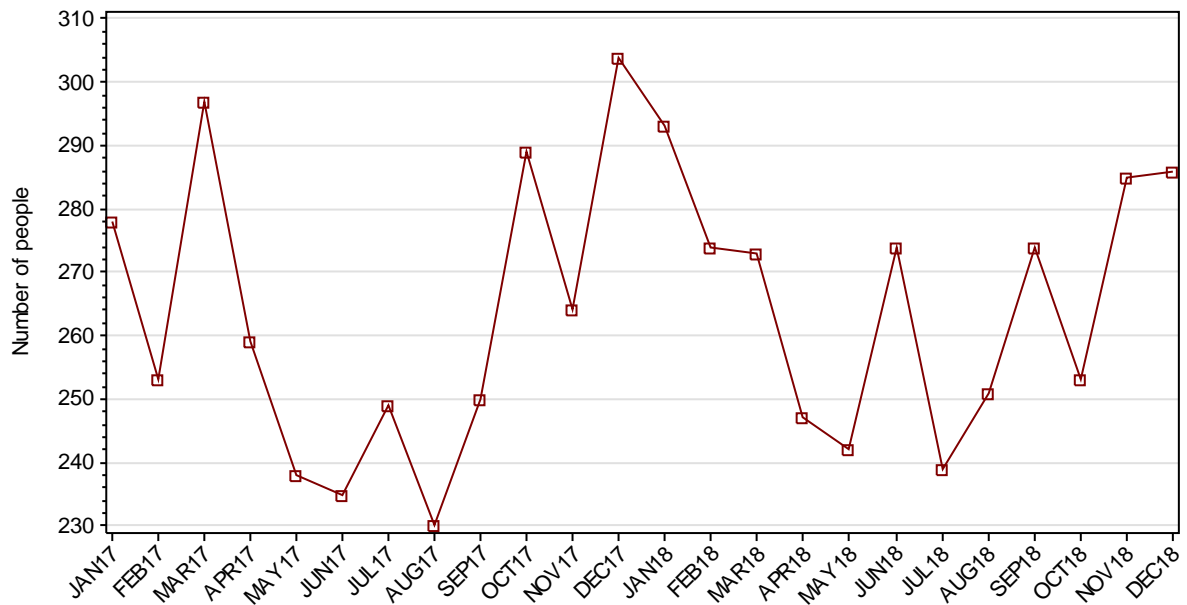
	30SEP18		31DEC18	
	Number	% of Total	Number	% of Total
Homicide	1	0.7	0	0
Acts intended to cause injury	23	16.8	16	14.0
Sexual assault	15	10.9	16	14.0
Dangerous/negligent acts	3	2.2	4	3.5
Abduction/harrassment	1	0.7	1	0.9
Robbery/extortion	23	16.8	17	14.9
Unlawful entry/burglary/B&E	19	13.9	22	19.3
Theft	11	8.0	4	3.5
Fraud/deception	1	0.7	0	0
Drug offences	1	0.7	0	0
Weapons offences	2	1.5	1	0.9
Property damage	3	2.2	6	5.3
Public order offences	2	1.5	0	0
Traffic offences	0	0	1	0.9
Justice procedure offences	32	23.4	26	22.8
Miscellaneous	0	0	0	0
Unknown	0	0	0	0
Total	137	100.0	114	100.0

1.1.9 JUVENILE CUSTODY FORECAST

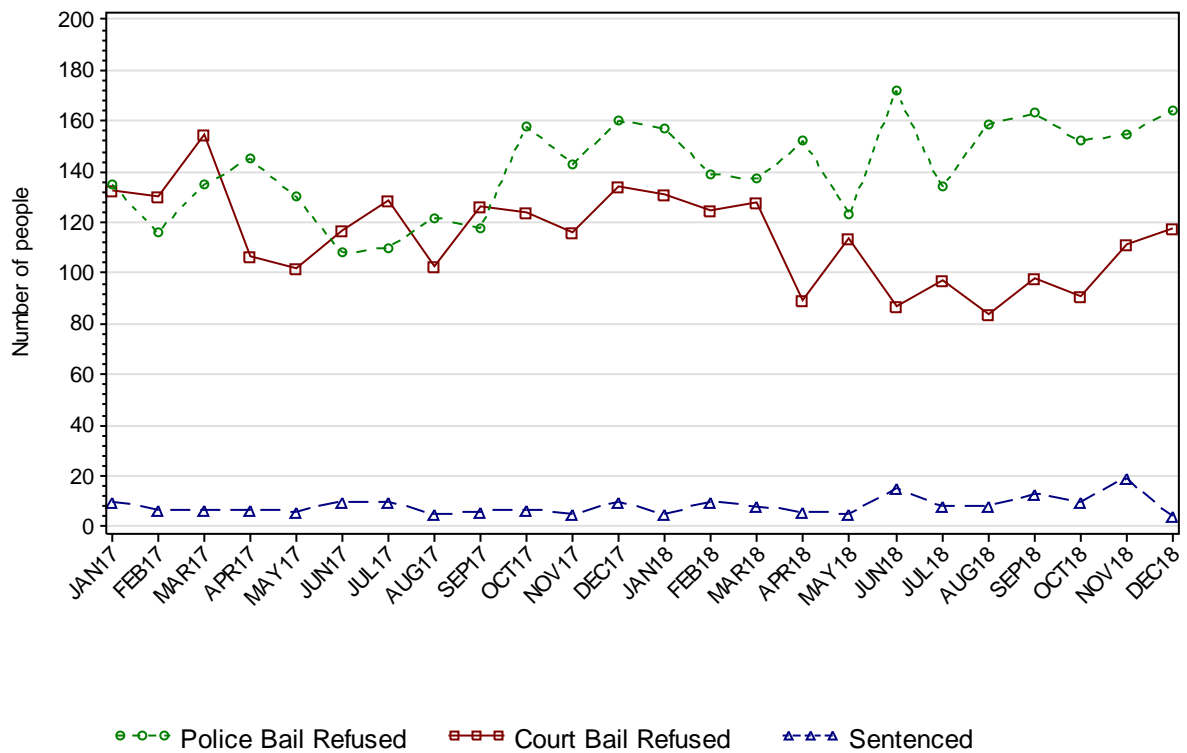


SECTION 1.2 JUVENILE CUSTODY RECEPTIONS

1.2.1 JUVENILES RECEIVED INTO CUSTODY DURING MONTH

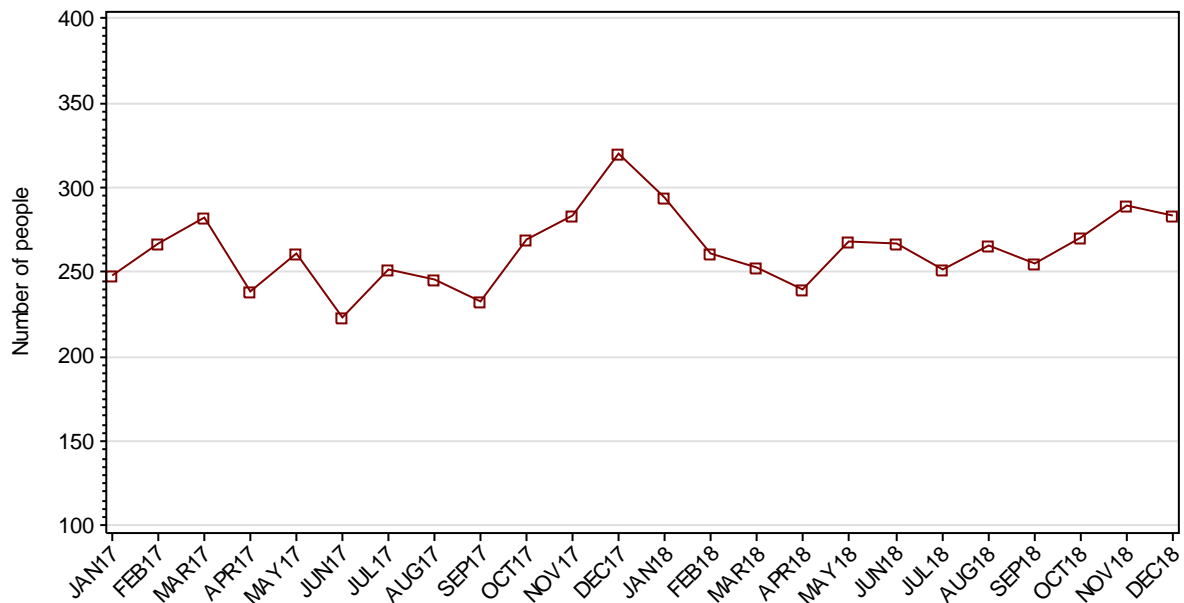


1.2.2 JUVENILES RECEIVED INTO CUSTODY BY LEGAL STATUS



SECTION 1.3 JUVENILE CUSTODY DISCHARGES

1.3.1 JUVENILES DISCHARGED FROM CUSTODY DURING MONTH

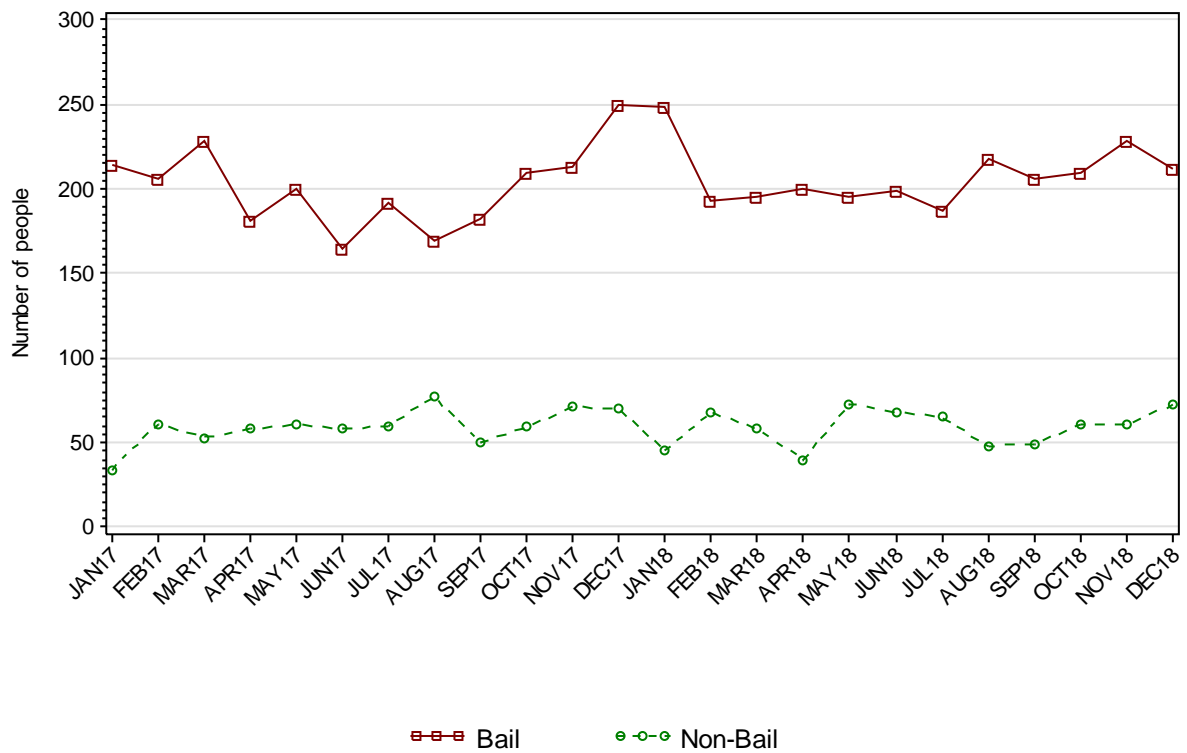


1.3.2 AVERAGE LENGTH OF STAY FOR JUVENILES DISCHARGED FROM CUSTODY EACH QUARTER

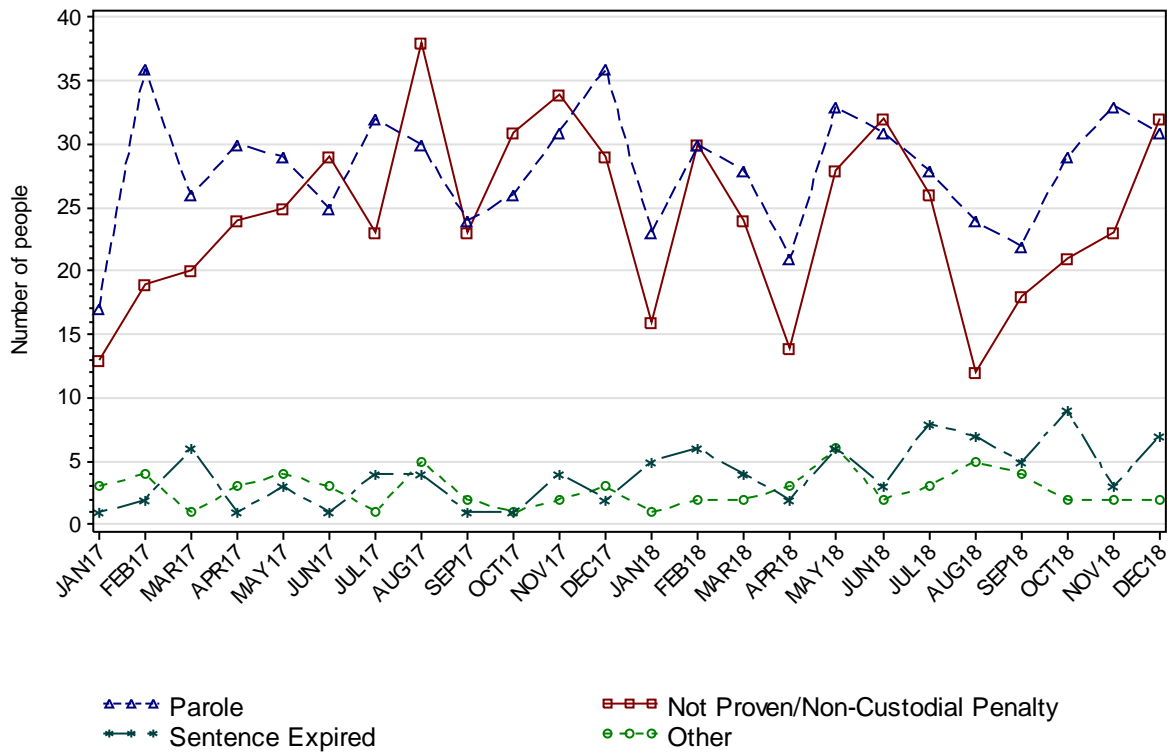
		Remand Custody Only		Sentenced Custody Only		Remand to Sentenced Custody	
		SEP18	DEC18	SEP18	DEC18	SEP18	DEC18
Total Male	Avg Days	13.1	9.3	111.2	141.9	148.1	206.2
	Number	497	530	22	35	70	77
Total Female	Avg Days	5.4	4.1	53.5	34.1	98.3	155.4
	Number	172	187	4	7	8	9
Indigenous Male	Avg Days	16.5	9.8	112.2	103.9	142.7	212.7
	Number	225	253	11	14	37	36
Indigenous Female	Avg Days	7.6	4.0	70.5	30.5	97.3	111.5
	Number	67	79	2	2	4	4
Total	Avg Days	11.1	7.9	102.3	123.9	143.0	200.9
	Number	669	717	26	42	78	86

Note: Length of Stay for Remand to Sentenced Custody is from the date of reception on remand to date of discharge after serving sentence.

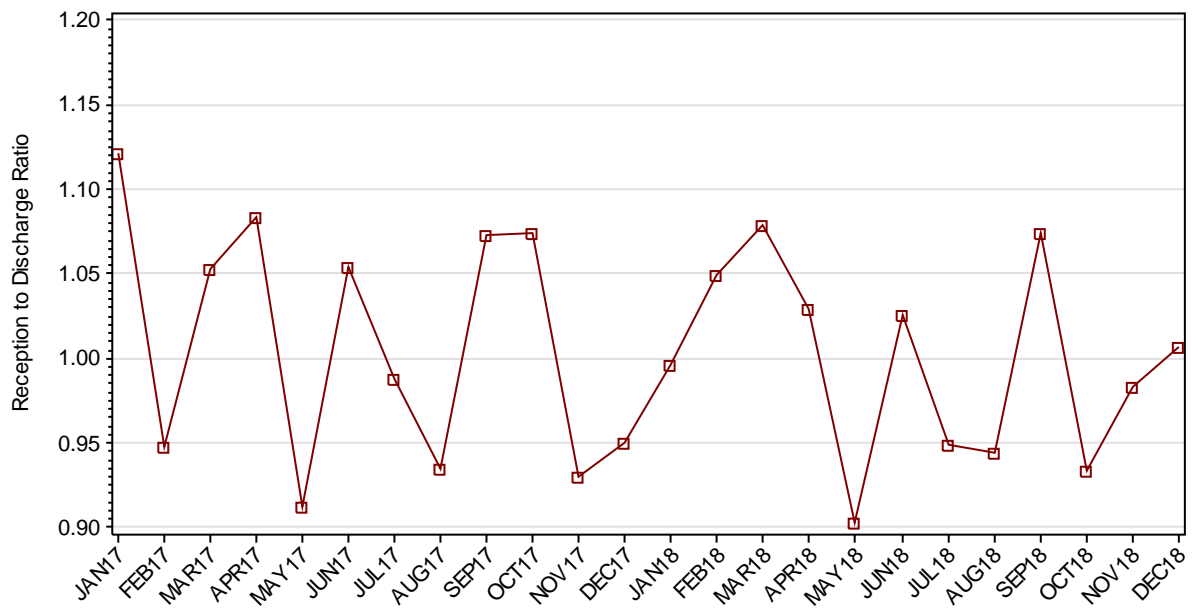
1.3.3 JUVENILES BY DISCHARGE TYPE



1.3.4 JUVENILES BY DISCHARGE TYPE (EXCLUDING BAIL)



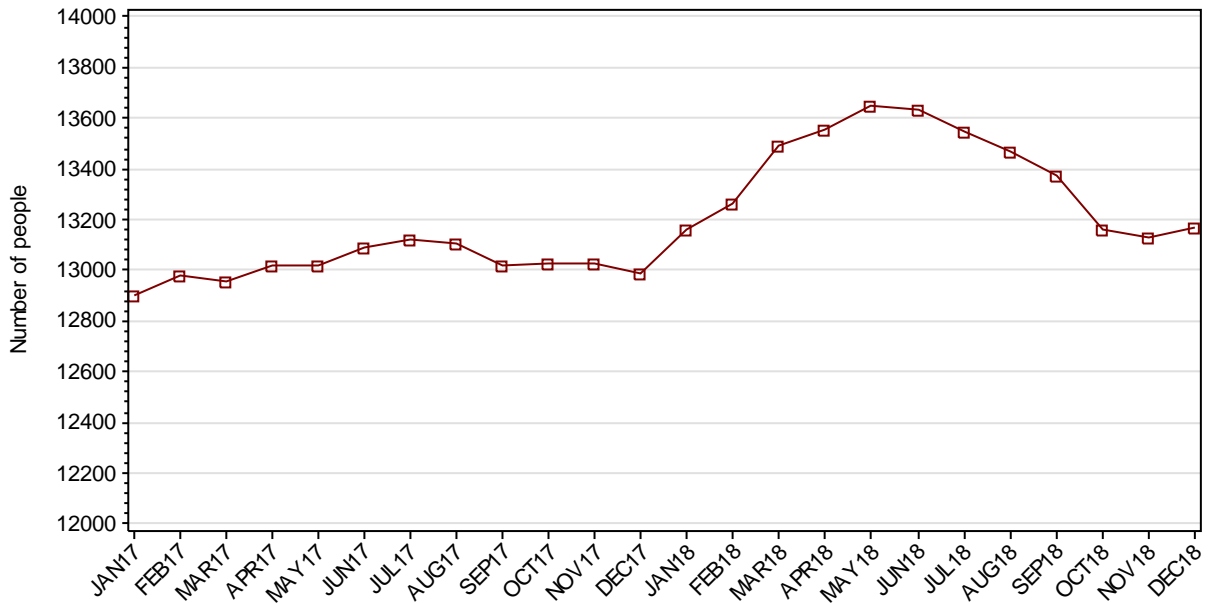
1.3.5 RATIO OF JUVENILE RECEPTIONS TO DISCHARGES



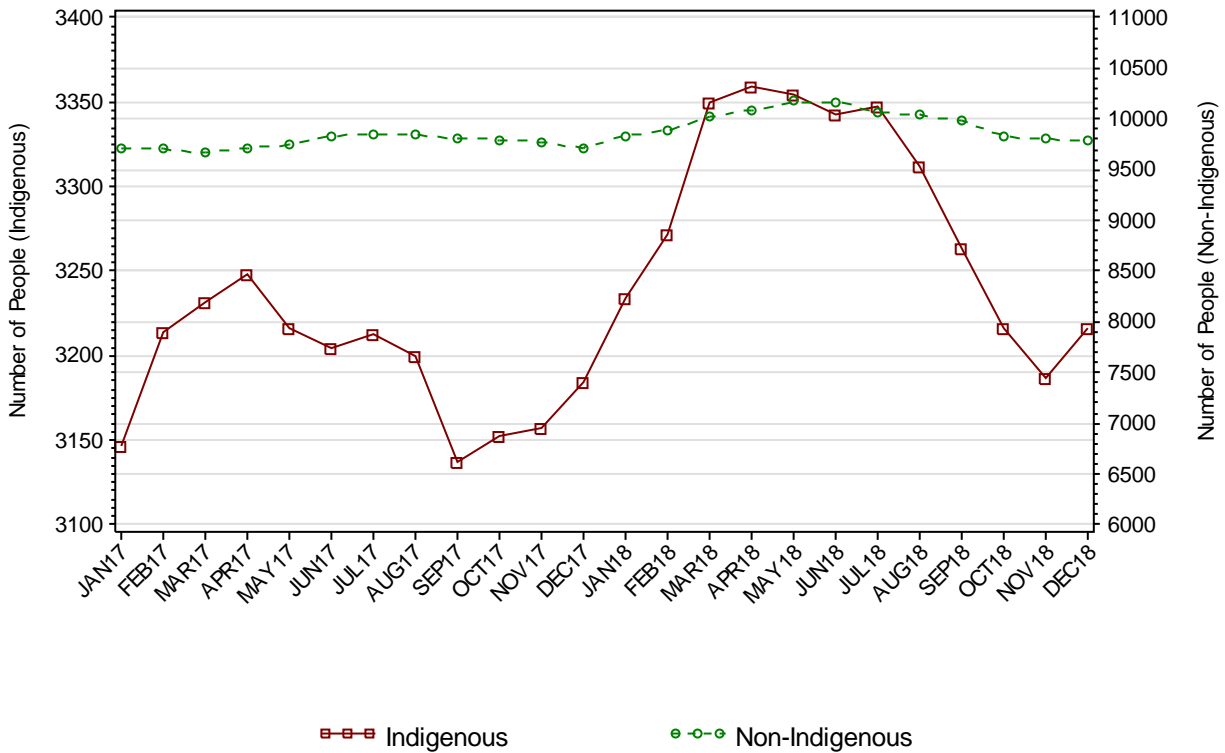
Part 2 ADULTS

SECTION 2.1 ADULT CUSTODY POPULATION

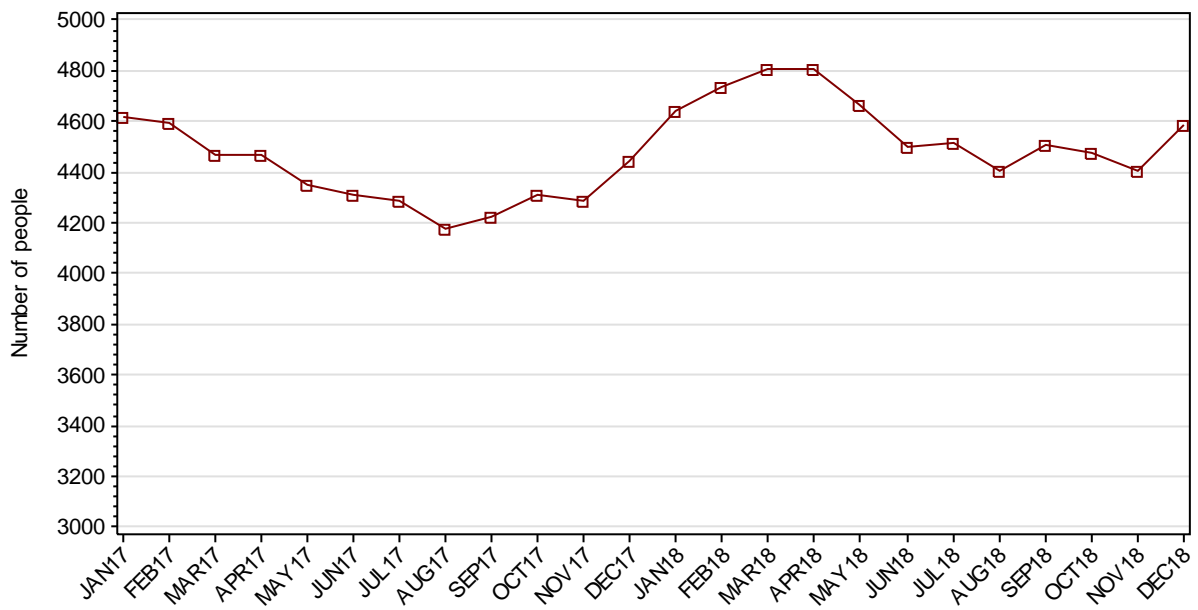
2.1.1 ADULT CUSTODY POPULATION AT END OF MONTH



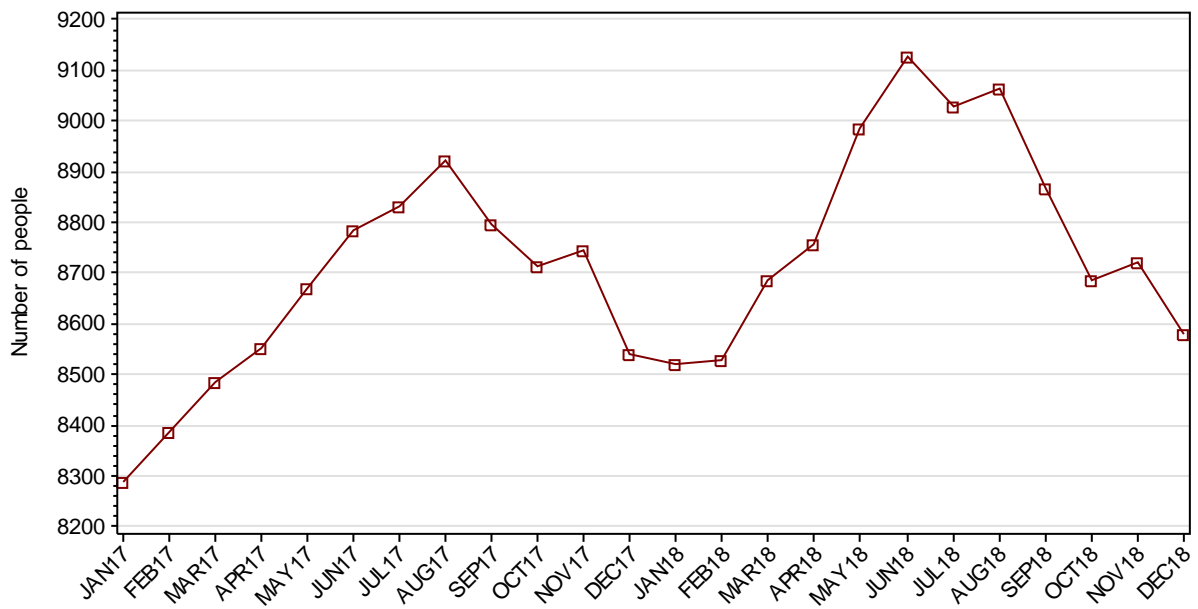
2.1.2 ADULT CUSTODY POPULATION BY INDIGENOUS STATUS



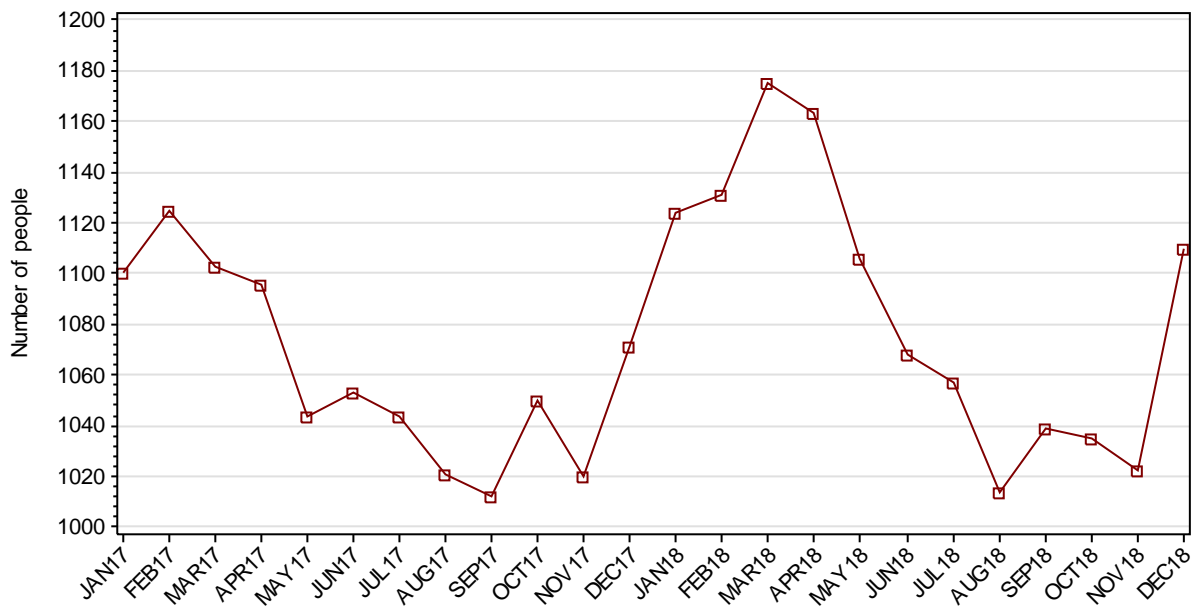
2.1.3 ADULT REMAND POPULATION



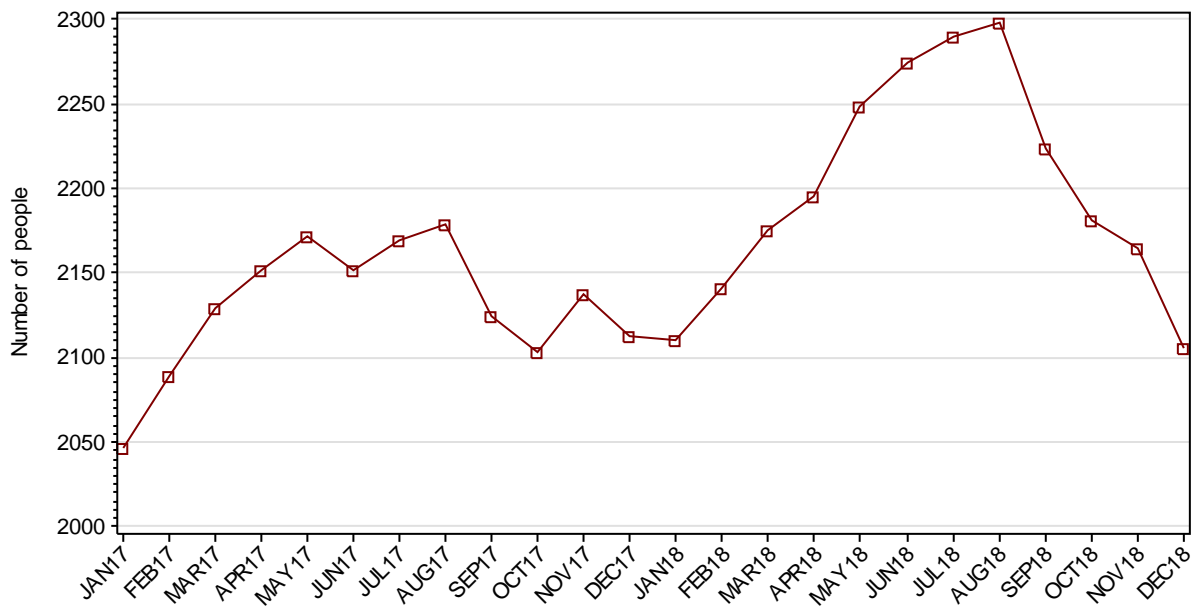
2.1.4 ADULT SENTENCED POPULATION



2.1.5 INDIGENOUS ADULT REMAND POPULATION



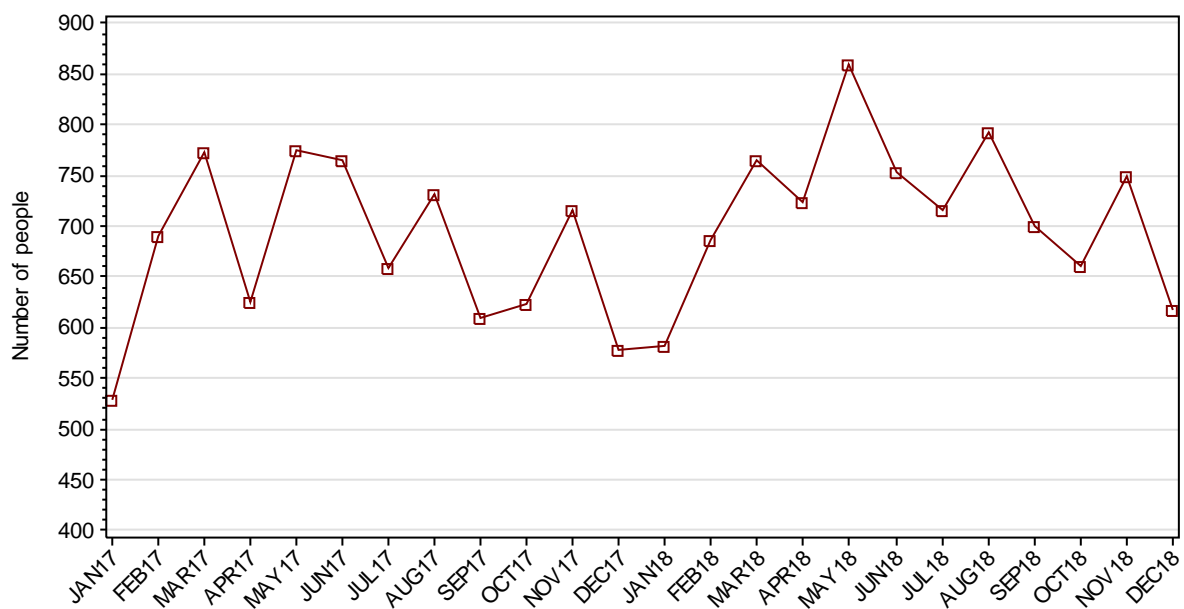
2.1.6 INDIGENOUS ADULT SENTENCED POPULATION



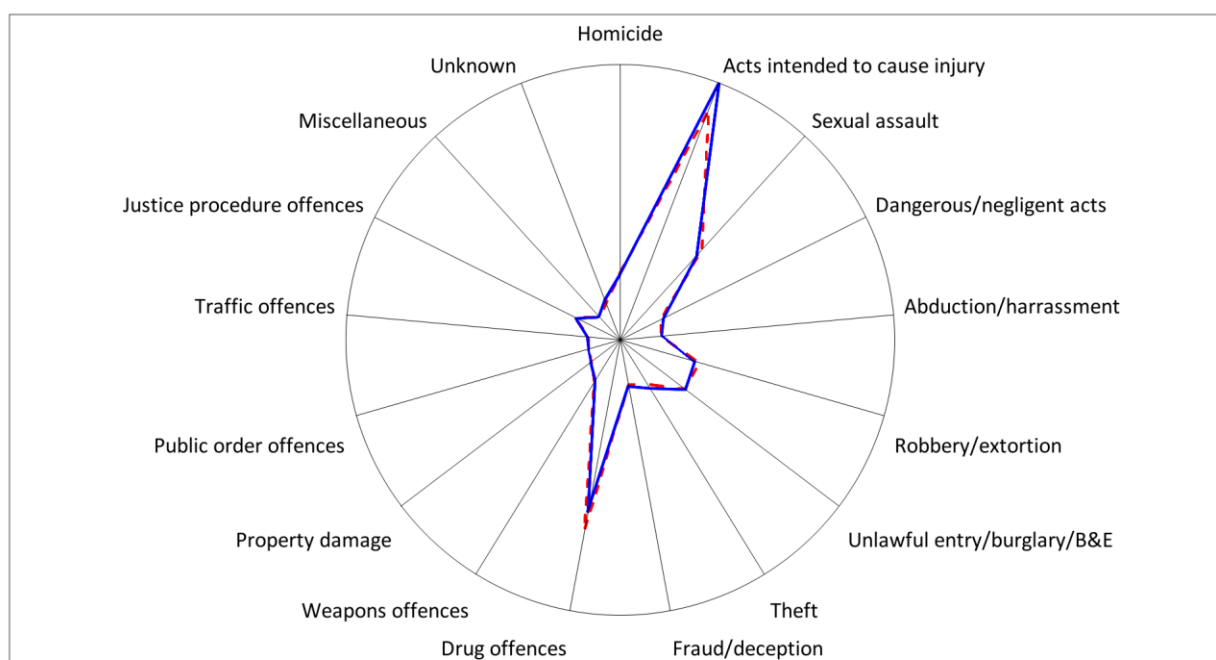
2.1.7 ADULT CUSTODY PROFILE AT END OF QUARTER

		Remand		Sentenced		Total	
		SEP18	DEC18	SEP18	DEC18	SEP18	DEC18
Total Male	Count	4098	4193	8289	8017	12387	12210
	Avg Age	35.5	35.2	37.7	38.0	37.0	37.1
Total Female	Count	407	393	578	562	985	955
	Avg Age	33.7	33.8	36.7	37.0	35.4	35.7
Indigenous Male	Count	908	970	2035	1931	2943	2901
	Avg Age	32.2	32.2	33.4	33.7	33.0	33.2
Indigenous Female	Count	131	140	189	175	320	315
	Avg Age	31.2	32.0	32.9	33.3	32.2	32.8
Total	Count	4505	4586	8867	8579	13372	13165
	Avg Age	35.3	35.1	37.6	37.9	36.9	37.0

2.1.8 ADULTS IN CUSTODY: NUMBER WHOSE LEGAL STATUS CHANGED DURING MONTH FROM REMAND TO SENTENCED



2.1.9 ADULT REMAND POPULATION BY MOST SERIOUS OFFENCE

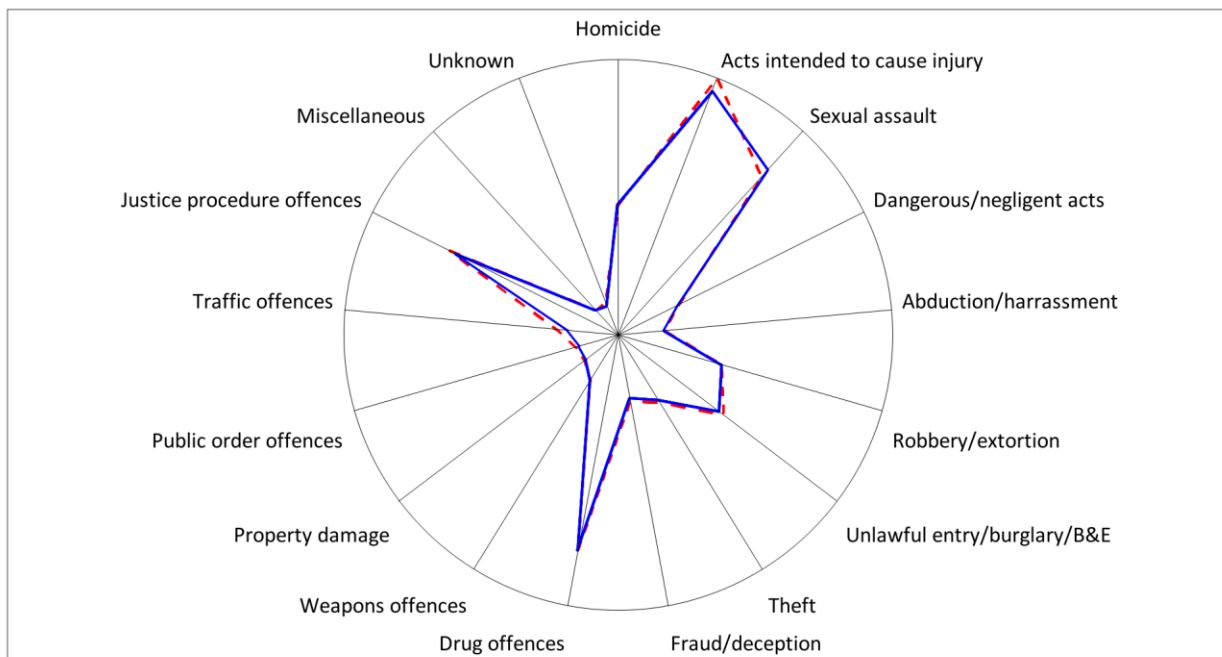


As At: - -30SEP18

— 31DEC18

	30SEP18		31DEC18	
	Number	% of Total	Number	% of Total
Homicide	226	5.0	220	4.8
Acts intended to cause injury	1310	29.1	1485	32.4
Sexual assault	557	12.4	518	11.3
Dangerous/negligent acts	97	2.2	117	2.6
Abduction/harrassment	70	1.6	79	1.7
Robbery/extortion	323	7.2	293	6.4
Unlawful entry/burglary/B&E	315	7.0	320	7.0
Theft	133	3.0	165	3.6
Fraud/deception	97	2.2	103	2.2
Drug offences	991	22.0	878	19.1
Weapons offences	119	2.6	107	2.3
Property damage	40	0.9	43	0.9
Public order offences	18	0.4	21	0.5
Traffic offences	14	0.3	21	0.5
Justice procedure offences	127	2.8	120	2.6
Miscellaneous	11	0.2	14	0.3
Unknown	57	1.3	82	1.8
Total	4505	100.0	4586	100.0

2.1.10 ADULT SENTENCED POPULATION BY MOST SERIOUS OFFENCE

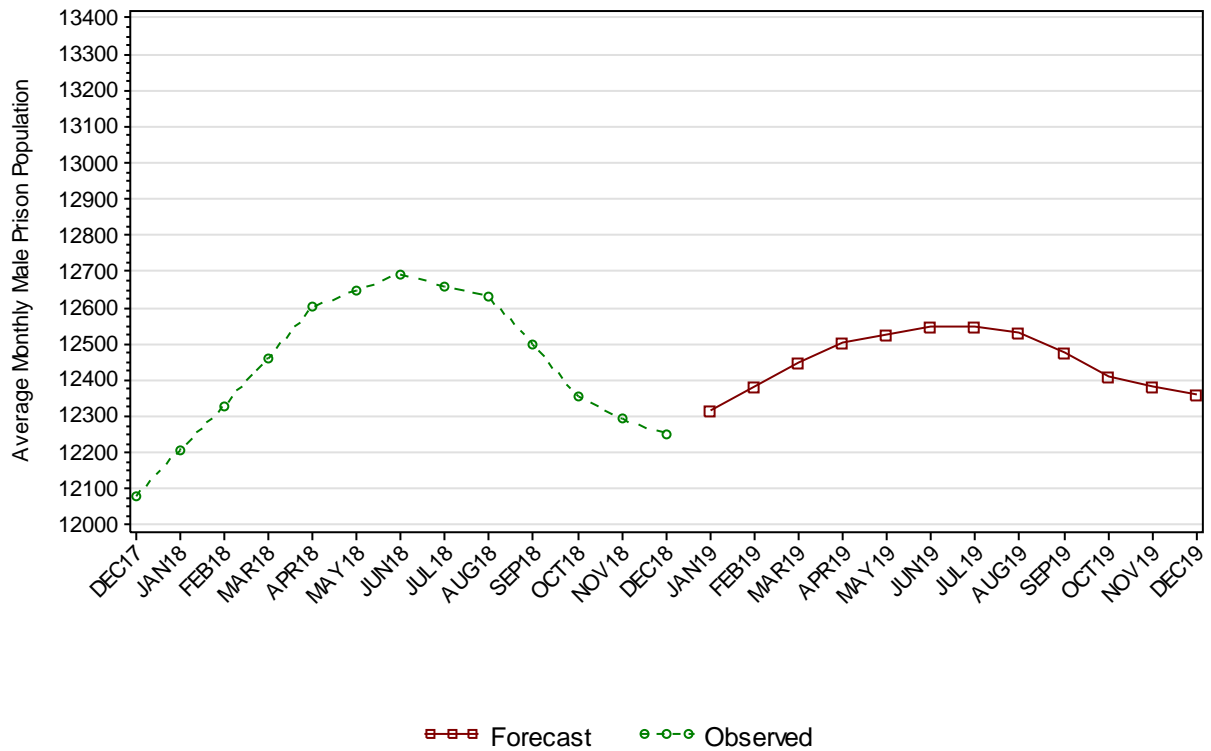


As At: - - 30SEP18

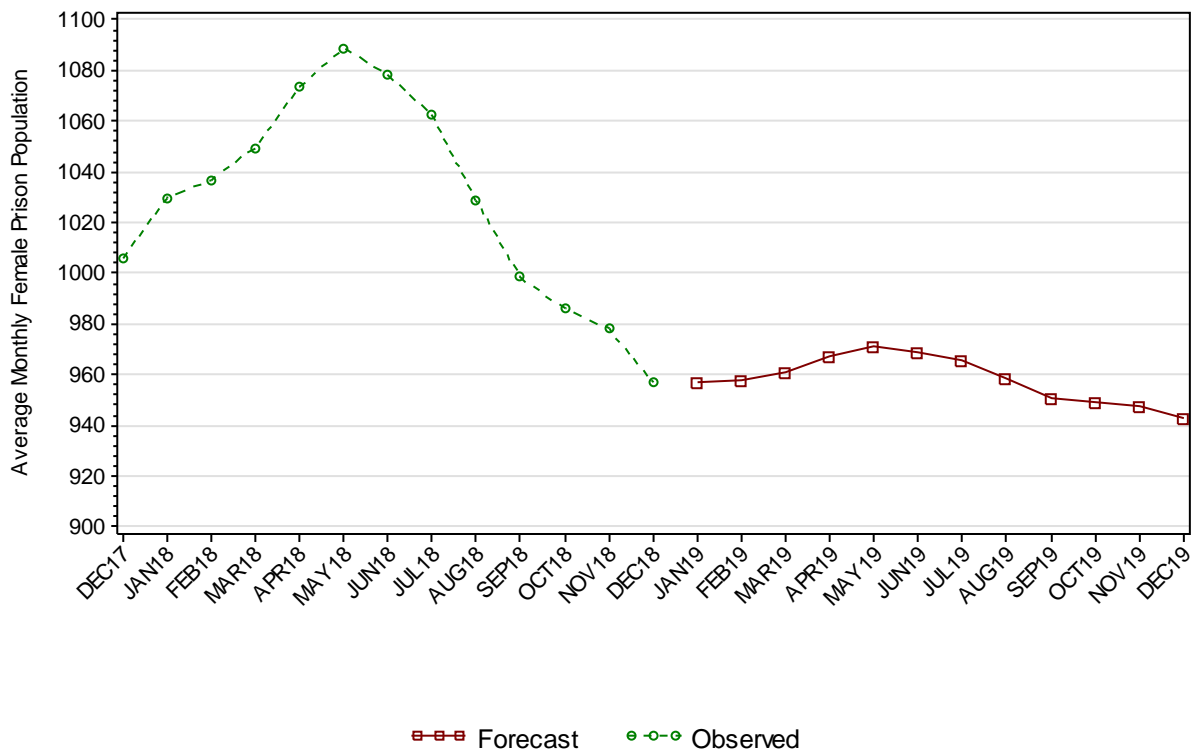
— 31DEC18

	30SEP18		31DEC18	
	Number	% of Total	Number	% of Total
Homicide	686	7.7	698	8.1
Acts intended to cause injury	1694	19.1	1600	18.7
Sexual assault	1269	14.3	1335	15.6
Dangerous/negligent acts	263	3.0	254	3.0
Abduction/harrassment	115	1.3	107	1.2
Robbery/extortion	537	6.1	537	6.3
Unlawful entry/burglary/B&E	710	8.0	670	7.8
Theft	339	3.8	319	3.7
Fraud/deception	254	2.9	232	2.7
Drug offences	1304	14.7	1306	15.2
Weapons offences	154	1.7	157	1.8
Property damage	80	0.9	70	0.8
Public order offences	95	1.1	70	0.8
Traffic offences	219	2.5	142	1.7
Justice procedure offences	1099	12.4	1053	12.3
Miscellaneous	21	0.2	23	0.3
Unknown	28	0.3	6	0.1
Total	8867	100.0	8579	100.0

2.1.11 MALE PRISON POPULATION* FORECAST



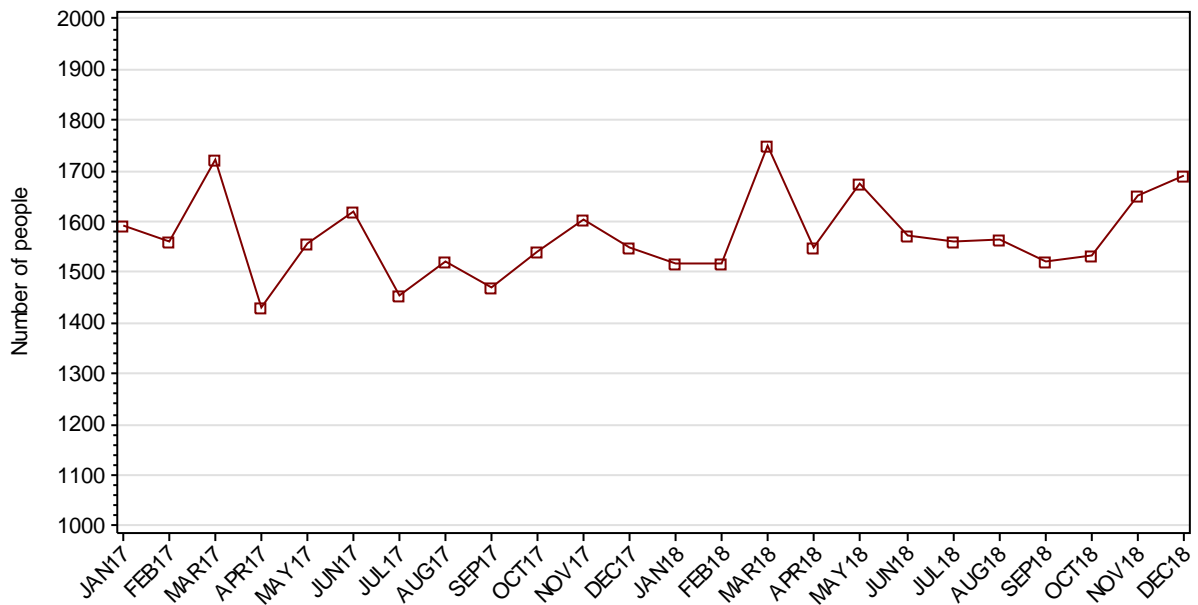
2.1.12 FEMALE PRISON POPULATION* FORECAST



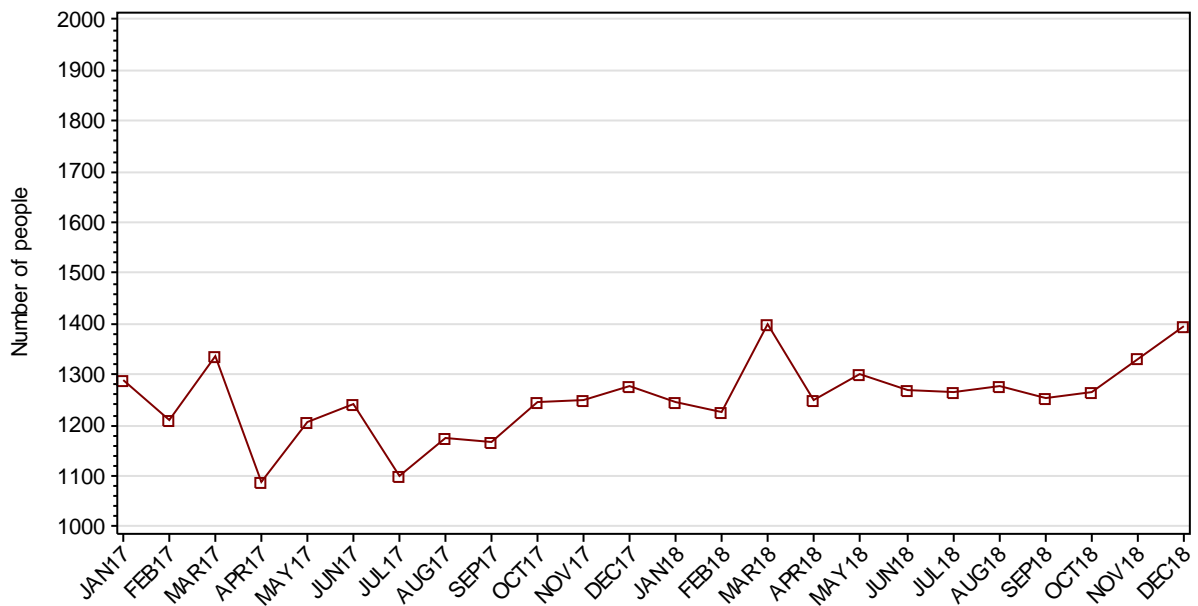
*Includes adults held in 24 hour police/court cell complexes managed by CSNSW

SECTION 2.2 ADULT CUSTODY RECEPTIONS

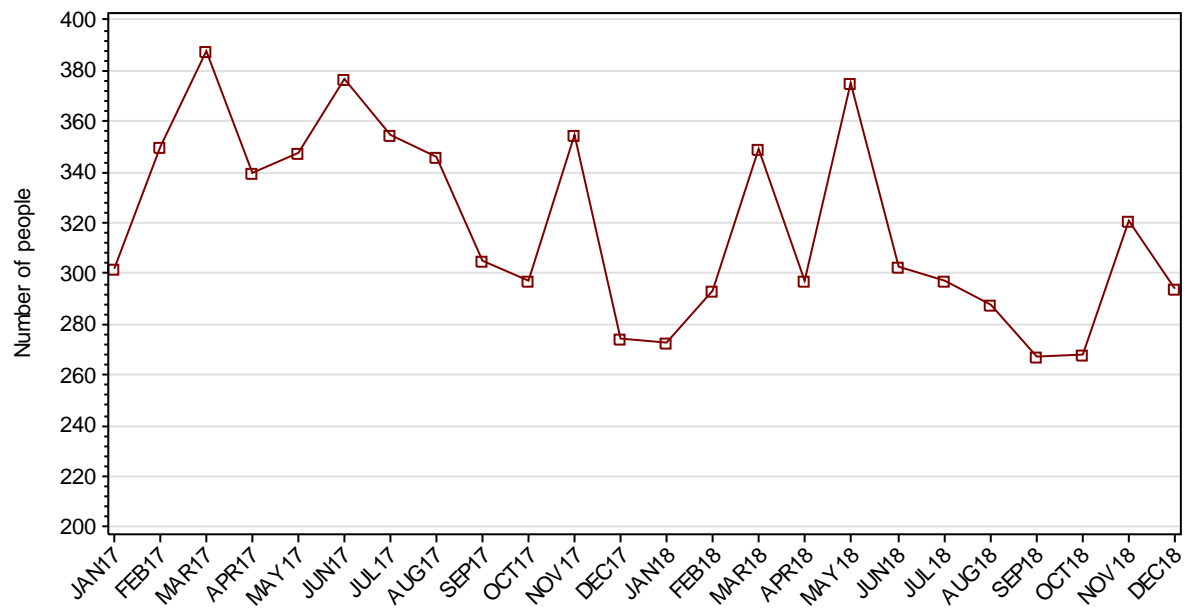
2.2.1 ADULTS RECEIVED INTO CUSTODY DURING MONTH



2.2.2 ADULT REMAND RECEPTIONS

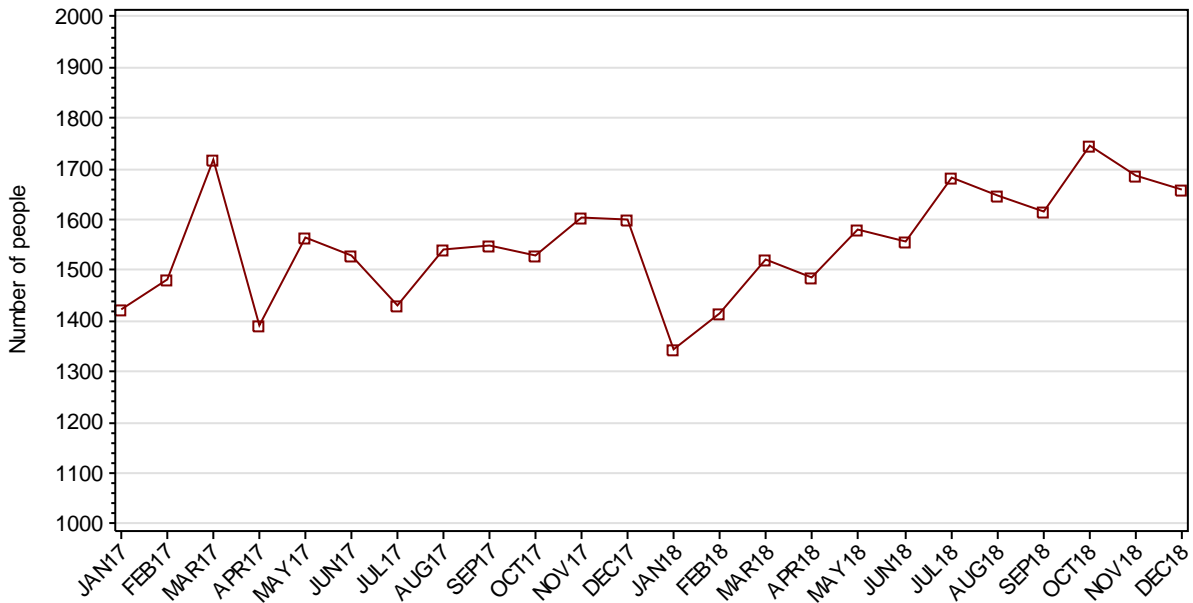


2.2.3 ADULT SENTENCED RECEPTIONS



SECTION 2.3 ADULT CUSTODY DISCHARGES

2.3.1 ADULTS DISCHARGED FROM CUSTODY DURING MONTH

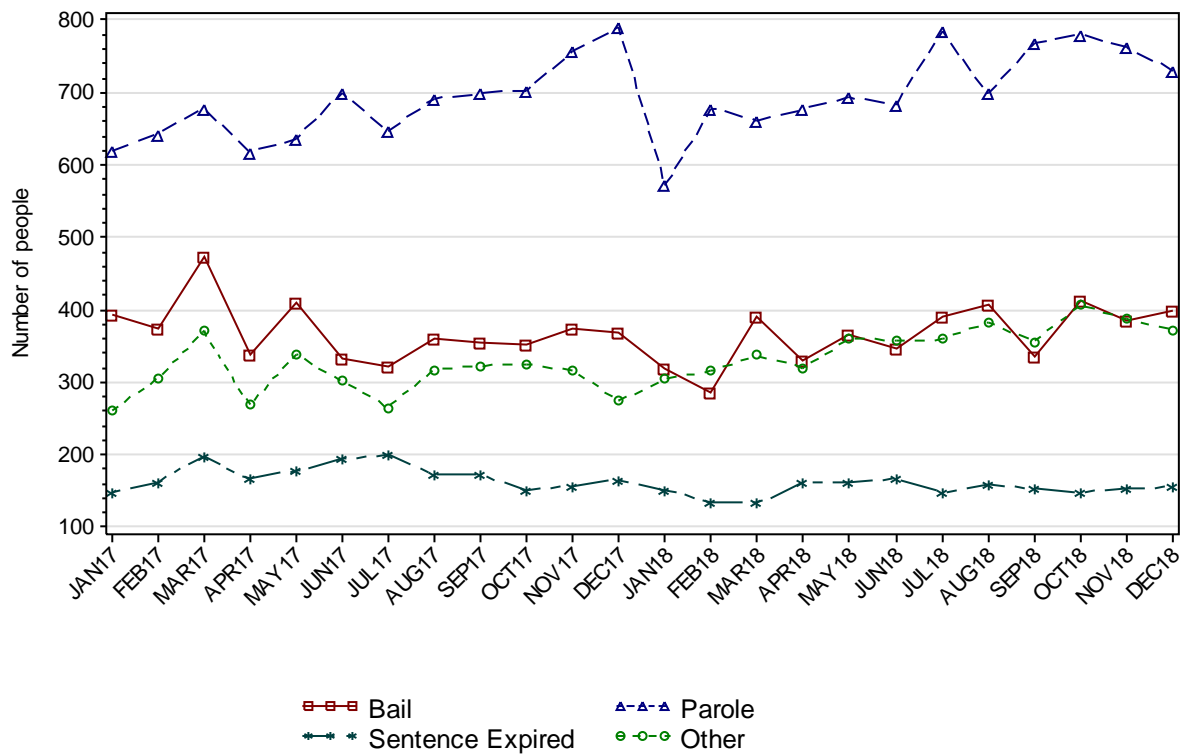


2.3.2 AVERAGE LENGTH OF STAY FOR ADULTS DISCHARGED FROM CUSTODY EACH QUARTER

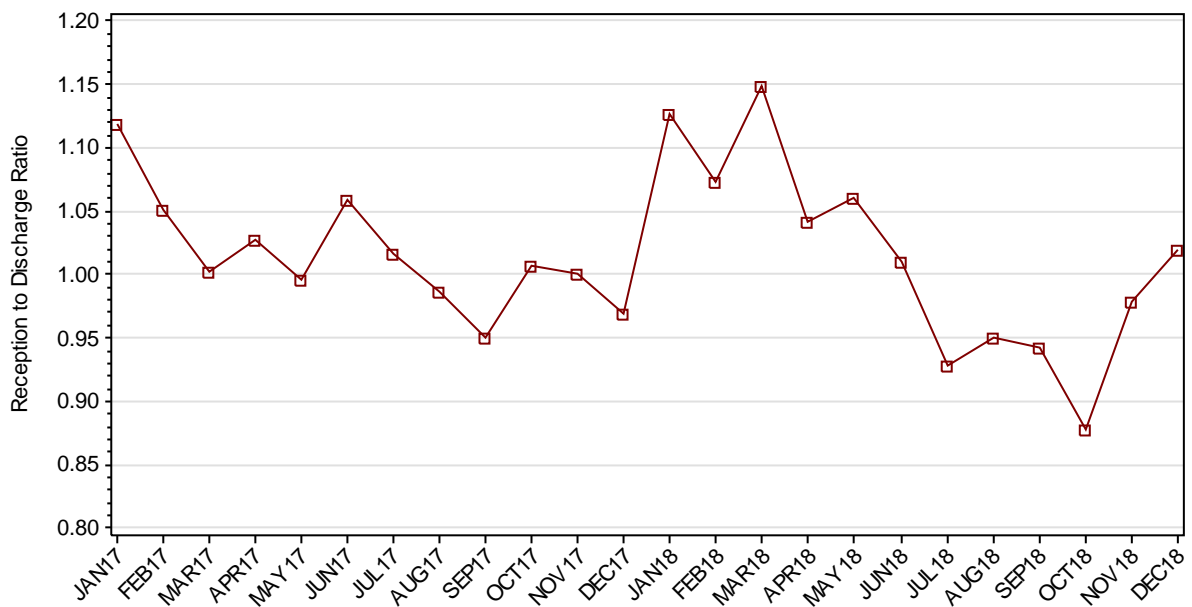
		Remand Custody Only		Sentenced Custody Only		Remand to Sentenced Custody	
		SEP18	DEC18	SEP18	DEC18	SEP18	DEC18
Total Male	Avg Days	57.3	57.8	235.4	249.7	427.5	434.1
	Number	1417	1532	905	866	1902	1998
Total Female	Avg Days	48.3	43.6	176.5	127.8	249.3	258.3
	Number	324	337	141	127	251	232
Indigenous Male	Avg Days	50.2	48.4	209.9	201.9	352.6	343.3
	Number	378	366	263	245	528	585
Indigenous Female	Avg Days	56.5	43.8	161.1	108.3	230.5	203.2
	Number	117	116	60	55	113	113
Total	Avg Days	55.6	55.3	227.4	234.1	406.7	415.8
	Number	1741	1869	1046	993	2153	2230

Note: Length of Stay for Remand to Sentenced Custody is from the date of reception on remand to date of discharge after serving sentence.

2.3.3 ADULTS BY DISCHARGE TYPE



2.3.4 RATIO OF ADULT RECEPTIONS TO DISCHARGES



Part 3 DATA TABLES

Juvenile	1.In Custody										Remand to Sent
	Total	Legal Status			Indigenous			Indigenous Legal Status			
		Court Bail Ref.	Police Bail Ref.	Sent	Yes	No	Unk	Court Bail Ref.	Police Bail Ref.	Sent	
JAN17	278	153	3	122	156	121	1	84	2	70	30
FEB17	263	148	6	109	149	113	1	78	4	67	25
MAR17	279	157	3	119	148	128	3	77	1	70	40
APR17	299	189	8	102	160	137	2	100	4	56	19
MAY17	275	161	6	108	143	129	3	78	1	64	38
JUN17	288	158	3	127	150	135	3	79	0	71	46
JUL17	286	164	4	118	132	150	4	69	1	62	22
AUG17	270	160	2	108	127	141	2	69	2	56	24
SEP17	286	163	5	118	132	151	3	74	2	56	33
OCT17	308	170	6	132	143	160	5	78	4	61	35
NOV17	286	156	6	124	123	159	4	65	4	54	30
DEC17	268	165	2	101	117	148	3	66	2	49	13
JAN18	268	152	8	108	127	138	3	66	5	56	36
FEB18	280	174	5	101	139	135	6	90	1	48	27
MAR18	302	179	6	117	145	152	5	84	5	56	43
APR18	309	179	6	124	147	156	6	80	3	64	27
MAY18	282	155	3	124	138	139	5	73	2	63	41
JUN18	290	154	6	130	142	142	6	76	3	63	29
JUL18	277	137	9	131	135	135	7	65	4	66	32
AUG18	261	120	5	136	120	135	6	59	1	60	35
SEP18	281	137	7	137	135	139	7	72	5	58	22
OCT18	264	130	7	127	126	132	6	68	5	53	25
NOV18	259	124	6	129	117	135	7	59	3	55	23
DEC18	261	142	5	114	137	119	5	75	2	60	21

Juvenile	2.Receptions							3.Discharges									Ratio Rec/ Dis
	Tot	Legal Status			Indigenous			Tot	Legal Status					Indigenous			
		Court Bail Ref.	Police Bail Ref.	Sent	Yes	No	Unk		Bail	Not Proven Non- Cust.	Other	Parole	Sent Exp	Yes	No	Unk	
JAN17	278	133	135	10	139	137	2	248	214	13	3	17	1	119	127	2	1.12
FEB17	253	130	116	7	125	119	9	267	206	19	4	36	2	132	126	9	0.95
MAR17	297	155	135	7	147	143	7	282	229	20	1	26	6	149	128	5	1.05
APR17	259	107	145	7	120	132	7	239	181	24	3	30	1	108	123	8	1.08
MAY17	238	102	130	6	107	125	6	261	200	25	4	29	3	124	132	5	0.91
JUN17	235	117	108	10	104	127	4	223	165	29	3	25	1	97	122	4	1.05
JUL17	249	129	110	10	104	138	7	252	192	23	1	32	4	122	124	6	0.99
AUG17	230	103	122	5	108	115	7	246	169	38	5	30	4	114	123	9	0.93
SEP17	250	126	118	6	110	134	6	233	183	23	2	24	1	104	124	5	1.07
OCT17	289	124	158	7	140	142	7	269	210	31	1	26	1	130	134	5	1.07
NOV17	264	116	143	5	127	133	4	284	213	34	2	31	4	146	133	5	0.93
DEC17	304	134	160	10	148	150	6	320	250	29	3	36	2	152	161	7	0.95
JAN18	293	131	157	5	155	134	4	294	249	16	1	23	5	145	145	4	1.00
FEB18	274	125	139	10	136	128	10	261	193	30	2	30	6	124	130	7	1.05
MAR18	273	128	137	8	132	137	4	253	195	24	2	28	4	128	120	5	1.08
APR18	247	89	152	6	110	136	1	240	200	14	3	21	2	107	133	0	1.03
MAY18	242	114	123	5	120	115	7	268	195	28	6	33	6	128	132	8	0.90
JUN18	274	87	172	15	119	150	5	267	199	32	2	31	3	116	147	4	1.03
JUL18	239	97	134	8	107	126	6	252	187	26	3	28	8	115	132	5	0.95
AUG18	251	84	159	8	107	139	5	266	218	12	5	24	7	121	139	6	0.94
SEP18	274	98	163	13	124	146	4	255	206	18	4	22	5	110	142	3	1.07
OCT18	253	91	152	10	119	126	8	271	210	21	2	29	9	128	134	9	0.93
NOV18	285	111	155	19	128	150	7	290	229	23	2	33	3	137	147	6	0.98
DEC18	286	118	164	4	143	129	14	284	212	32	2	31	7	123	145	16	1.01

Adult	1.In Custody								Remand to Sent
	Total	Legal Status		Indigenous			Indigenous Legal Status		
		Remand	Sent	Yes	No	Unk	Remand	Sent	
JAN17	12901	4614	8287	3147	9701	53	1100	2047	528
FEB17	12978	4591	8387	3214	9702	62	1125	2089	691
MAR17	12955	4469	8486	3232	9665	58	1103	2129	772
APR17	13022	4470	8552	3248	9712	62	1096	2152	626
MAY17	13018	4348	8670	3216	9744	58	1044	2172	774
JUN17	13092	4309	8783	3205	9831	56	1053	2152	765
JUL17	13120	4288	8832	3213	9854	53	1044	2169	658
AUG17	13102	4180	8922	3200	9845	57	1021	2179	731
SEP17	13017	4221	8796	3137	9805	75	1012	2125	609
OCT17	13026	4311	8715	3153	9797	76	1050	2103	624
NOV17	13031	4286	8745	3157	9774	100	1020	2137	716
DEC17	12989	4447	8542	3184	9714	91	1071	2113	579
JAN18	13164	4645	8519	3234	9835	95	1124	2110	581
FEB18	13267	4737	8530	3272	9886	109	1131	2141	687
MAR18	13494	4807	8687	3350	10024	120	1175	2175	765
APR18	13558	4803	8755	3359	10088	111	1163	2196	724
MAY18	13651	4664	8987	3355	10173	123	1106	2249	860
JUN18	13630	4502	9128	3343	10170	117	1068	2275	754
JUL18	13546	4516	9030	3347	10072	127	1057	2290	715
AUG18	13468	4402	9066	3312	10036	120	1014	2298	793
SEP18	13372	4505	8867	3263	9987	122	1039	2224	701
OCT18	13164	4477	8687	3216	9826	122	1035	2181	661
NOV18	13129	4407	8722	3187	9801	141	1022	2165	749
DEC18	13165	4586	8579	3216	9784	165	1110	2106	618

Adult	2.Receptions						3.Discharges									Ratio Rec/ Dis
	Tot	Legal Status		Indigenous			Tot	Legal Status				Indigenous				
		Remand	Sent	Yes	No	Unk		Bail	Other	Parole	Sent Exp	Yes	No	Unk		
JAN17	1592	1290	302	478	1068	46	1422	394	260	619	149	424	958	40	1.12	
FEB17	1560	1210	350	482	1032	46	1484	374	305	642	163	416	1030	38	1.05	
MAR17	1723	1335	388	487	1182	54	1718	473	370	678	197	467	1193	58	1.00	
APR17	1430	1090	340	407	986	37	1392	339	268	618	167	395	965	32	1.03	
MAY17	1556	1208	348	430	1095	31	1563	410	339	636	178	462	1065	36	1.00	
JUN17	1618	1241	377	457	1128	33	1529	334	301	700	194	453	1041	35	1.06	
JUL17	1455	1100	355	428	992	35	1432	322	265	646	199	418	978	36	1.02	
AUG17	1521	1175	346	424	1051	46	1541	359	317	692	173	438	1063	40	0.99	
SEP17	1471	1166	305	423	1004	44	1549	355	323	699	172	481	1042	26	0.95	
OCT17	1541	1244	297	473	1013	55	1530	352	324	703	151	457	1015	58	1.01	
NOV17	1603	1248	355	467	1061	75	1603	373	317	756	157	467	1085	51	1.00	
DEC17	1550	1276	274	484	1019	47	1599	369	274	791	165	457	1082	60	0.97	
JAN18	1517	1244	273	448	1030	39	1346	319	304	572	151	399	912	35	1.13	
FEB18	1519	1226	293	449	1015	55	1415	286	316	678	135	413	962	40	1.07	
MAR18	1748	1399	349	527	1158	63	1522	390	337	662	133	449	1020	53	1.15	
APR18	1548	1251	297	467	1022	59	1487	329	320	677	161	460	961	66	1.04	
MAY18	1677	1302	375	480	1130	67	1581	366	360	693	162	480	1045	56	1.06	
JUN18	1572	1269	303	460	1063	49	1555	346	358	684	167	461	1034	60	1.01	
JUL18	1562	1265	297	473	1036	53	1682	391	359	784	148	479	1160	43	0.93	
AUG18	1565	1277	288	449	1071	45	1646	406	383	698	159	484	1109	53	0.95	
SEP18	1522	1255	267	449	1024	49	1614	336	356	769	153	496	1070	48	0.94	
OCT18	1534	1266	268	445	1029	60	1747	412	407	780	148	493	1194	60	0.88	
NOV18	1652	1331	321	468	1116	68	1687	384	387	763	153	492	1146	49	0.98	
DEC18	1690	1396	294	524	1079	87	1658	399	372	731	156	495	1099	64	1.02	

Part 4 GLOSSARY

Adult

A person held in custody in a gazetted correctional centre managed by Corrective Services NSW (CSNSW). Persons may have been remanded in custody after being refused bail or sentenced to a custodial order for a proven offence.

The adult figures in this report include the small number of 16 and 17 year old males held in the Kariiong Juvenile Correctional Centre.

ANZSOC

The Australian Bureau of Statistics Australian and New Zealand Standard Offence Classification (ANZSOC) groups criminal offences into 16 broad divisions:

1. Homicide and related offences
2. Acts intended to cause injury
3. Sexual assault and related offences
4. Dangerous or negligent acts endangering persons
5. Abduction, harassment and other offences against the person
6. Robbery, extortion and related offences
7. Unlawful entry with intent/burglary, break and enter
8. Theft and related offences
9. Fraud, deception and related offences
10. Illicit drug offences
11. Prohibited and regulated weapons and explosives offences
12. Property damage and environmental pollution
13. Public order offences
14. Traffic and vehicle regulatory offences
15. Offences against justice procedures, government security and government operations
16. Miscellaneous offences

For further information see:

<http://www.abs.gov.au/AUSSTATS/abs@.nsf/DetailsPage/1234.02011>

Note that shortened titles are used in this report.

Average length of stay

The length of stay is the duration of the custodial episode, from the date of reception to the date of discharge.

The average length of stay (in days) is presented for three types of custodial episodes:

Remand custody only - the person entered custody after being refused bail and was then discharged from custody without having been sentenced. Most commonly discharged after being granted bail, other reasons include criminal charges not proven, receiving a non-custodial penalty for a proven offence or being transferred interstate or from a juvenile to an adult prison or vice versa.

Sentenced custody only - persons who entered custody only after being sentenced to a custodial penalty by a court. These persons had either been granted bail, or bail had been dispensed with, pending finalisation of their charges.

Remand to sentenced custody - persons who had been remanded in custody prior to having a custodial sentence imposed by a court. The length of stay for these people is the entire time from reception on remand to discharge after serving the custodial sentence.

Note: Persons initially remanded in custody but then granted bail prior to having a custodial penalty imposed by a court are counted as two custodial episodes: one of remand custody only and one of sentenced custody only.

Bail

Under the provisions of the *Bail Act 2013*, police and courts may grant or refuse to grant bail to alleged offenders. The grant of bail takes into consideration the alleged offence and offender. Bail is granted at the offence level and so a person may be granted bail for one offence and refused bail for another offence.

Persons refused bail (and small numbers granted bail but unable to meet the bail conditions set by a court) are remanded into custody pending further court action.

Juvenile custody population data in this report disaggregates persons remanded into custody into those refused police bail and refused court bail. This is because all juveniles refused police bail are held in Juvenile Justice centres whereas not all adults refused police bail are held in gazetted correctional centres or 24 hour police cell complexes.

Control order

See Custodial sentence

Corrective Services NSW

Corrective Services NSW (CSNSW) is part of the Department of Justice with responsibilities including the supervision of people remanded in custody pending the finalisation of criminal charges and offenders sentenced to a custodial order.

See <http://www.correctiveservices.nsw.gov.au/> for further information.

The Corrections Research, Evaluation and Statistics (CRES) section of CSNSW have provided the adult custody data for this report and advised on its interpretation.

Court bail refused

See Bail

Custodial episode

A custodial episode is the time between the reception into and discharge from custody. An individual may have multiple custodial episodes within the reporting period. A change in legal status between the reception and discharge date, for example changing from being bail refused to being sentenced to a custodial order, does not count as a new custodial episode.

Custodial sentence

Courts may impose a custodial sentence for a proven offence. For adults this is a term of imprisonment under the *Crimes (Sentencing Procedure) Act 1999*. For young people this is a control order of up to two years duration or a term of imprisonment to be served partly or wholly as a juvenile under the *Children (Criminal Proceedings) Act 1987*. A person may be given custodial sentences for multiple proven offences.

While the majority of persons held under sentence in a correctional centre are sentenced under the *Crimes (Sentencing Procedure) Act 1999*, offenders whose parole has been revoked by the State Parole Authority, persons sentenced under the *Commonwealth Crimes Act 1914*, those sentenced under the *Mental Health (Forensic Provision) Act 1990*, small numbers of persons held under immigration orders awaiting deportation following expiry of their sentence and persons sentenced under legislation in other states or territories are also managed by CSNSW.

Custody population

Persons held in custody in a JJNSW juvenile justice centre or a CSNSW gazetted correctional centre, whether remanded or sentenced. Custody population figures are counted as at midnight on the last day of the month or quarter as appropriate. Persons held in a CSNSW managed police/court cell complex at midnight on the last day of the month but later transferred to a gazetted correctional centre are included in custody population figures for that month.

Discharge type

The type of reason why persons were discharged from custody:

Bail - courts granted the person bail pending the finalisation of their criminal charge(s).

Parole - the person was released to parole after serving the non-parole period of custodial sentence(s).

Sentence expired - the person was released after serving the entire period of all custodial sentence(s) imposed. This includes some persons who served both the non-parole and parole components of their sentence(s) in custody.

Not proven / non-custodial penalty - juvenile data only - the person was released after criminal charges were not proven or after the court imposed a non-custodial penalty for a proven offence, e.g. good behaviour bond.

Other - includes persons transferred to the NSW Drug Court, interstate or from a juvenile to an adult prison or vice versa and deceased persons. Includes adults released after criminal charges were not proven, after the court imposed a non-custodial penalty for a proven offence and where the specific nature of the court's final non-custodial disposal is unknown.

Discharges

Persons legally discharged from JJNSW or CSNSW custody in accordance with a court order (including any State Parole Authority order). For example - to parole, on expiry of a sentence or having been granted bail. Note that persons whose legal status changed from remand to sentenced or the reverse are not counted as discharges as they have not been discharged from custody.

Forecast

The male and female prison population forecasts are generated using an autoregressive integrated moving average (ARIMA) model (Athanasopoulos & Weatherburn, 2018). The forecast is calculated from the average monthly prison population data from January 2001 to the current month. Please note that this forecast includes adults held in 24 hour police/court cell complexes.

The juvenile custody population forecast is generated using an exponential smoothing model. The model is estimated using a Holt-Winters additive method. The forecast is

calculated from the average monthly juvenile custody population from January 2011 to the current month.

Imprisonment

See Custodial sentence

Indigenous status

Indigenous status as self-reported on reception into custody. Persons may identify as being Aboriginal or Torres Strait Islander, neither Aboriginal nor Torres Strait Islander or may not provide this information. An inmate is recorded as indigenous if they have identified as such in the current or any previous custodial episode. Indigenous status is unknown for a small proportion of people.

Juvenile

A person held in custody in a juvenile justice centre. These centres are managed by Juvenile Justice NSW (JJNSW). A young person in juvenile custody may have been refused bail by police, refused bail by the court or sentenced to a custodial sentence.

All young persons refused bail by police must be taken to a juvenile justice centre to be held in custody pending their court appearance. Young persons refused police bail cannot be held in a police or court cell.

Note: a small number of 16 and 17 year old males are held in Kariong Juvenile Correctional Centre which is managed by CSNSW. As Kariong is a gazetted correctional centre, these young persons are counted in the adult figures in this report.

Juvenile Justice NSW

Juvenile Justice NSW (JJNSW) is part of the Department of Justice with responsibilities including the supervision of young people remanded in custody pending the finalisation of criminal charges and young offenders sentenced to a control order/imprisonment.

See <http://www.djj.nsw.gov.au/> for further information.

The Research and Information Section of JJNSW have provided the juvenile data for this report and advised on its interpretation.

Legal status

The legal status of persons received into or held in custody:

Remand (Juvenile) - Juveniles refused bail (and small numbers granted bail but unable to meet conditions) are remanded into custody pending future court action.

Juvenile remand figures are disaggregated into:

- Police bail refused - Police have refused to grant bail to a juvenile. All juveniles refused bail by police are held in custody in a juvenile justice centre pending future court action.
- Court bail refused - the courts have refused to grant bail to a juvenile pending future court action.

Remand (Adult) - adults refused bail (and small numbers granted bail but unable to meet conditions) are remanded in custody pending future court action. Includes a small number of persons refused police bail and remanded in custody in a gazetted correctional centre. Includes persons on remand who are being managed as correctional patients under the *Mental Health (Forensic Provisions) Act 1990*.

Sentenced - the courts have imposed custodial sentence(s) for proven offence(s). This category includes persons returned to custody after breaching parole. Includes forensic patients as per the *Mental Health (Forensic Provisions) Act 1990* (ie persons found unfit to be tried and persons found not guilty due to mental illness). Persons on remand for one or more offences and sentenced for one or more offences have a legal status of sentenced.

Unknown - adults whose legal status was not recorded at the time of admission.

Legal status changed from remand to sentenced

Persons whose legal status changed from remand to sentenced upon the imposition of a custodial sentence by a court. This report shows the numbers of persons during each month who changed from being on remand to being sentenced.

Most serious offence

The most serious offence type for which each person is in custody. The offence type categories in this report are the sixteen ANZSOC Divisions, with shortened titles (See ANZSOC).

Most serious offence data is presented in a radar chart and a data table. The radar chart consists of a circle with a series of 'spokes' running from the centre of the circle to the perimeter. Each spoke represents a different offence type. The radar chart is constructed by placing a point on each spoke marking the proportion of prisoners with that offence type as their most serious offence. The higher the proportion, the closer the point to the perimeter. The points are then connected and the resulting figure inside the circle gives a picture of the distribution of most serious offence type across prisoners. A different type/colour of line is used for each quarter, making changes from quarter to quarter apparent. Note that offence types with no observations are plotted a short distance from the zero radius so that the numbers for every offence type can be observed.

The data table displays the number and proportion of persons in custody for each of the most serious offence types. The data is presented separately for sentenced persons and persons on remand:

Most Serious Offence – Adults:

The most serious offence for adults is as provided by CSNSW.

A person's most serious offence may change over the course of their custodial episode depending on offences for which they are in custody at any one time. The Most Serious Offence data presented in this report are stock data and are sourced from data extracts run two to three weeks after the end of the quarter.

The data for the previous quarter is as at the previous quarter's custody report.

Extracting the data after the same time lag each quarter reduces variability due to extract timing and so is indicative of a change in the broad offence profile of persons in custody between the end of the current and previous quarters.

Due to the way that MSO is recorded and the data extracted, it is not available for receptions or discharge data.

Most Serious Offence – Juveniles:

Most serious offence for juveniles is compiled by matching custody order records from JJNSW with sentencing and bail refused orders sourced from the JusticeLink system used by the NSW criminal courts. Data is matched using JusticeLink Proceeding Number, a unique offence identifier which is available in the JJNSW data from January 2011.

- The most serious offence for juveniles remanded in custody is the offence with the highest Median Sentence Ranking (MSR). The MSR is a ranking of ANZSOC codes and was developed by BOCSAR using data on sentences imposed in the NSW criminal courts. The MSR can be used to select the most serious offence when sentencing data is not available and to select most serious offence when multiple offences have the same custodial order duration. For further information see the BOCSAR's Crime and Justice Bulletin No.142 "Measuring Offence Seriousness": [www.bocsar.nsw.gov.au/lawlink/bocsar/ll_bocsar.nsf/vwFiles/CJB142.pdf/\\$file/CJB142.pdf](http://www.bocsar.nsw.gov.au/lawlink/bocsar/ll_bocsar.nsf/vwFiles/CJB142.pdf/$file/CJB142.pdf)
- The most serious offence for sentenced juveniles is the offence with the longest custodial order. For juveniles with more than one offence type with the same custodial order duration, the offence with the highest Median Sentence Ranking is selected as the most serious offence.
- Juveniles sentenced to a custodial order after breaching a non-custodial penalty (eg a suspended sentence, Community Service Order or good behaviour bond) have a most serious offence type of *Justice procedure offence* rather than the type of offence for which the non-custodial penalty was originally imposed (eg robbery/extortion, drug offences).

Note: this differs from the definition of most serious offence used in the Australian Bureau of Statistics Prisoners in Australia publication series (*ABS cat.no.4517.0*)

Police bail refused

See Bail.

Receptions

Persons received into Juvenile Justice custody or a gazetted correctional centre. Gazetted correctional centres are managed by CSNSW. Persons received into CSNSW custody and managed only in CSNSW 24-hour police/court cell complexes are excluded.

Ratio of receptions to discharges

The ratio of receptions to discharges. A ratio greater than 1 means there were more receptions than discharges during the month; a ratio less than 1 means there were more discharges than receptions during the month.

Remand

See Legal status.

Sentenced

See Legal status.

24 hour police/court cell complexes

In addition to gazetted correctional centres, CSNSW manage a number of police/court cell complexes. This report (with the exception of the adult prison forecast) excludes persons received and then discharged from a CSNSW-managed 24 hour police/court cell complex without entering a gazetted correctional centre.