

# NSW CUSTODY STATISTICS

June 2025



## YOUTH DETENTION POPULATION

245

in June 2024

234

in June 2025



### CUSTODY STATUS

Between June 2024 and June 2025



### GENDER

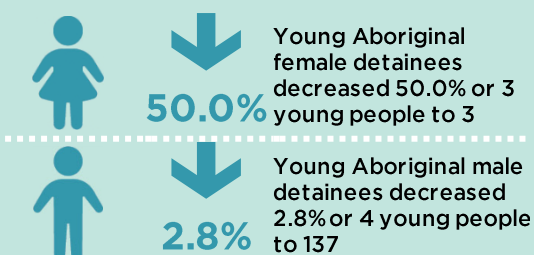
Between June 2024 and June 2025



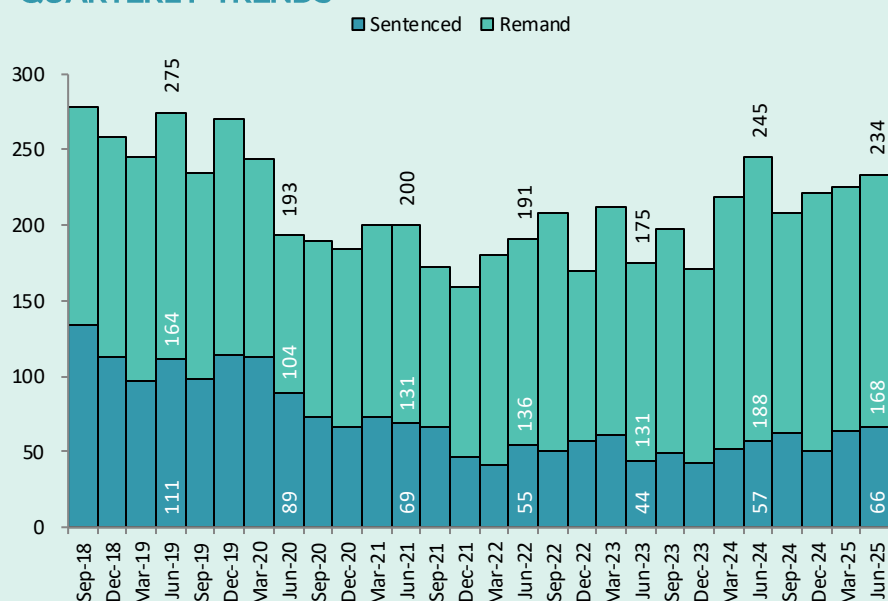
### ABORIGINAL OVER-REPRESENTATION



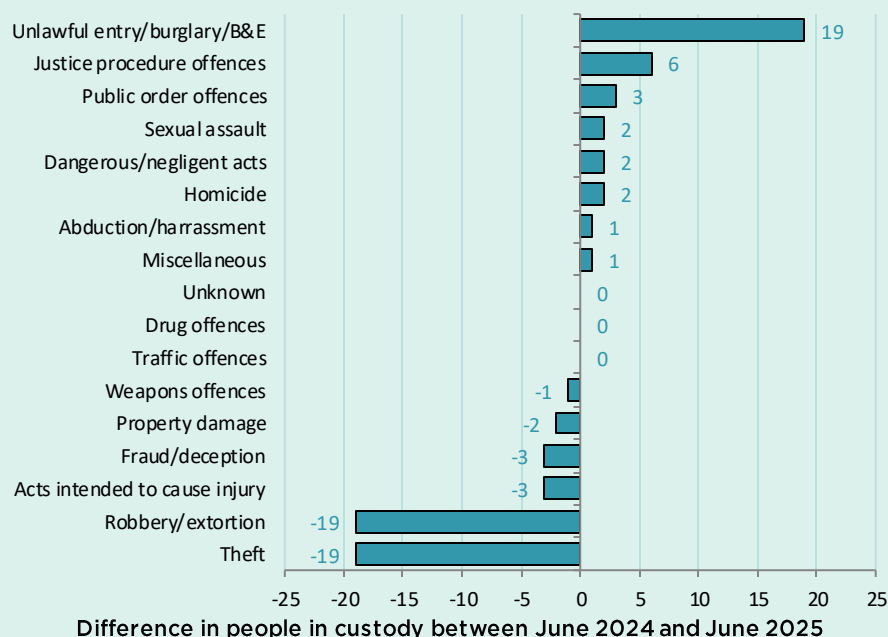
Between June 2024 and June 2025



### QUARTERLY TRENDS



### CHANGE IN YOUTH CUSTODY BY OFFENCE



# NSW CUSTODY STATISTICS

June 2025

## PRISON POPULATION

12,917

in June 2024

13,122

in June 2025



### LEGAL STATUS

Between June 2024 and June 2025



↑  
0.6%

Remand population  
increased 0.6% or 37  
people to 5,800



↑  
2.3%

Sentenced population  
increased 2.3% or 168  
people to 7,322

### GENDER

Between June 2024 and June 2025



↑  
5.6%

Female custody  
population increased  
5.6% or 48 people to  
903



↑  
1.3%

Male custody  
population increased  
1.3% or 157 people to  
12,219

### ABORIGINAL OVER-REPRESENTATION\*

In Jun 2024

31.9%

of prisoners were  
Aboriginal

In Jun 2025

33.4%

of prisoners were  
Aboriginal

Between June 2024 and June 2025



↑  
6.2%

Aboriginal female  
custody population  
increased 6.2% or 23  
people to 396

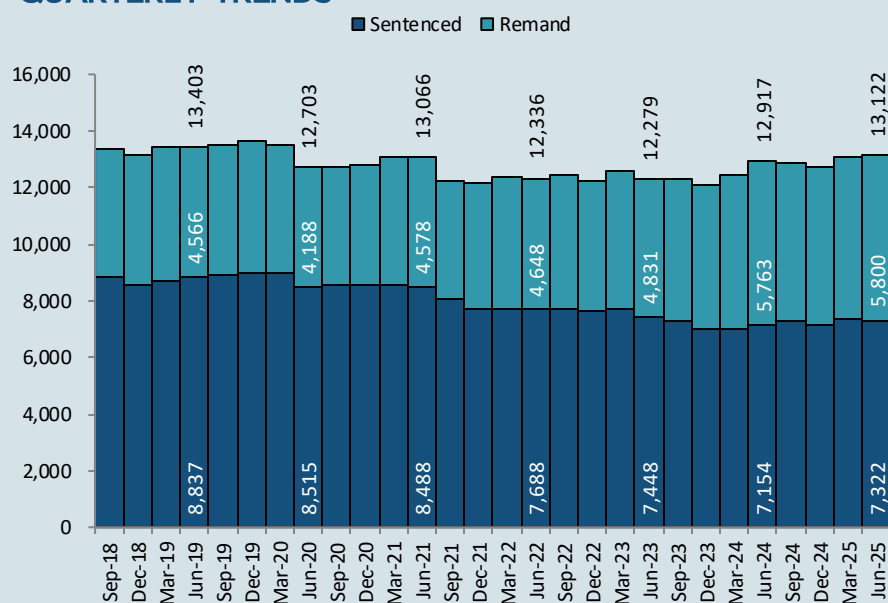


↑  
6.4%

Aboriginal male  
custody population  
increased 6.4% or 240  
people to 3,990

\*Due to delays in identification of Aboriginal status the number of Aboriginal persons in adult custody is potentially undercounted by up to 2% in more recent months.

### QUARTERLY TRENDS



### CHANGE IN PRISON NUMBERS BY OFFENCE

